



SMART SENSORS 4 AGRI-FOOD



FLANDERS'  
FOOD

## SPEARHEAD CLUSTER FOR AGRIFOOD

Industry driven innovation platform **with focus on growth and economic value creation**

Networked organization **with academic partners** (*universities, RTO's as imec, ILVO, ...*)

Networked organization **with innovation partners** (*other industry driven clusters*)

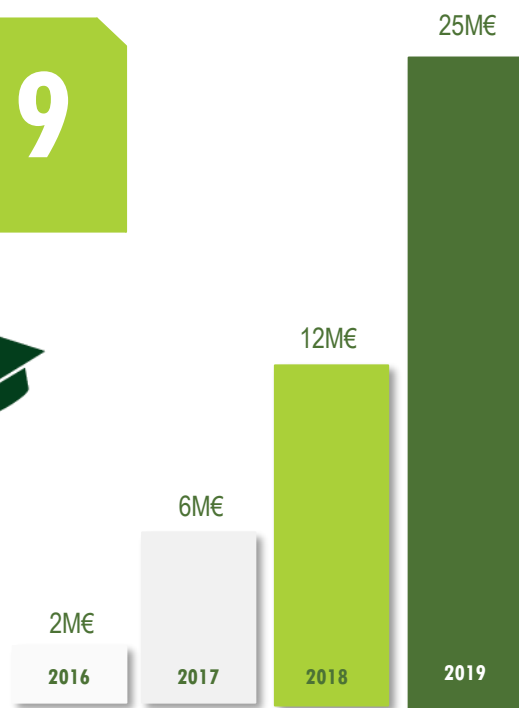
Collaboration **with the Flemish government**

Collaboration **with the farmer associations** (*Boerenbond and ABS*) in Flanders

# 2019

12 

Research  
institutes



Engaged Research budgets

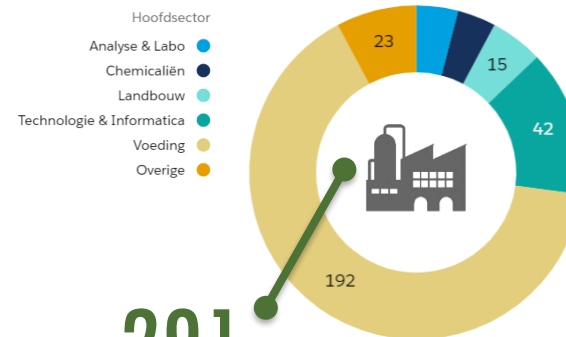
Pilot tests

300+



2.000+

Newsletter readers



291

Members (companies)



45

Events &  
Trainings



50

Ongoing  
projects

- VIS-CO
- VIS-Traject
- VIS-Traject innovatievolgers
- COOCK
- SBO
- EFRO
- Interreg
- Eranet
- H2020
- Andere



22 FTE

## Our ambition:

Prepare all the agrifood companies to make the leap towards industry 4.0:

- Introduce new technologies and inspire and enable the companies to use these
- Connect to the cloud
- Use the available data in the agri-food system



... and in the end ...

Become a more **interconnected**, **resilient** and **smart** agri-food system in Europe

## Objectives:

Set-up a network of interlinked, open access living labs to facilitate the implementation of smart sensor systems in the agri-food industry:

### Facilitate:

- Inform – create awareness
- Demonstrations
- Training and workshops

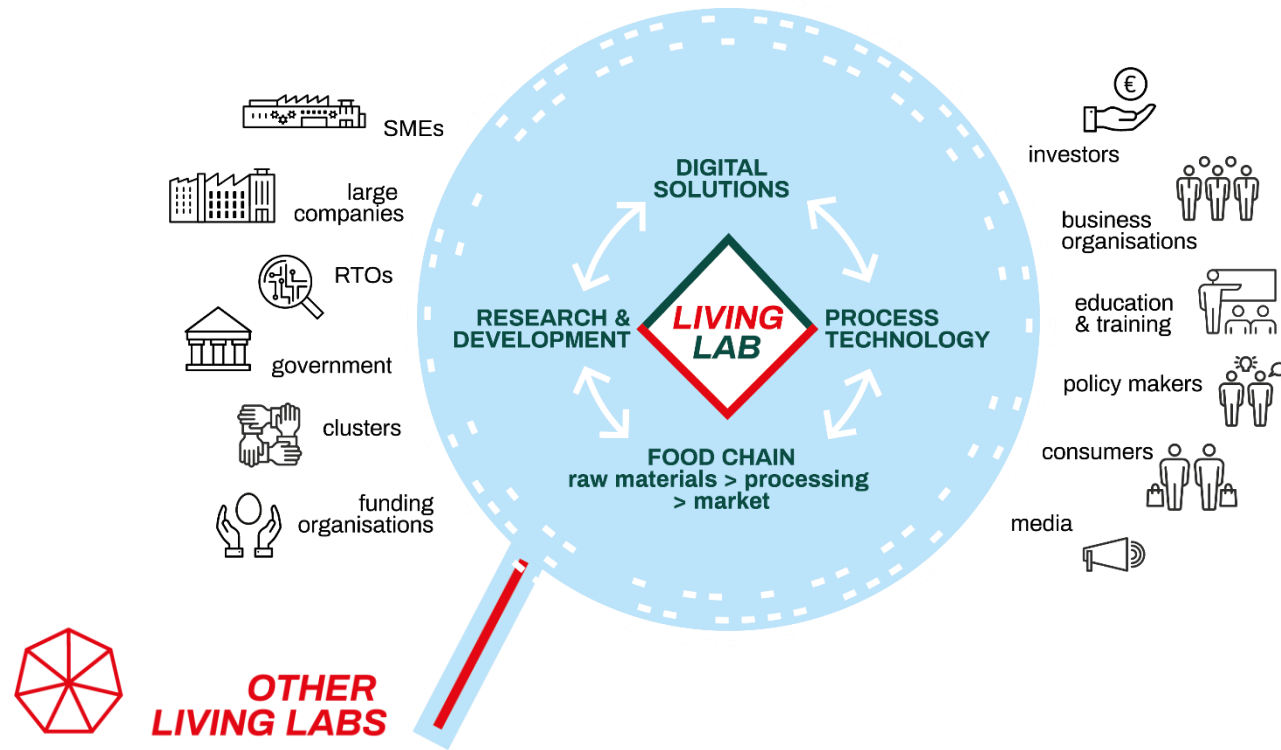
Accelerate the implementation of sensors, ICT-platforms, datamanagement systems, etc. in agri-food companies

Cross-border collaborations between companies



# LIVING LABS AS PHYSICAL BACKBONE

## The digital innovation ecosystem:

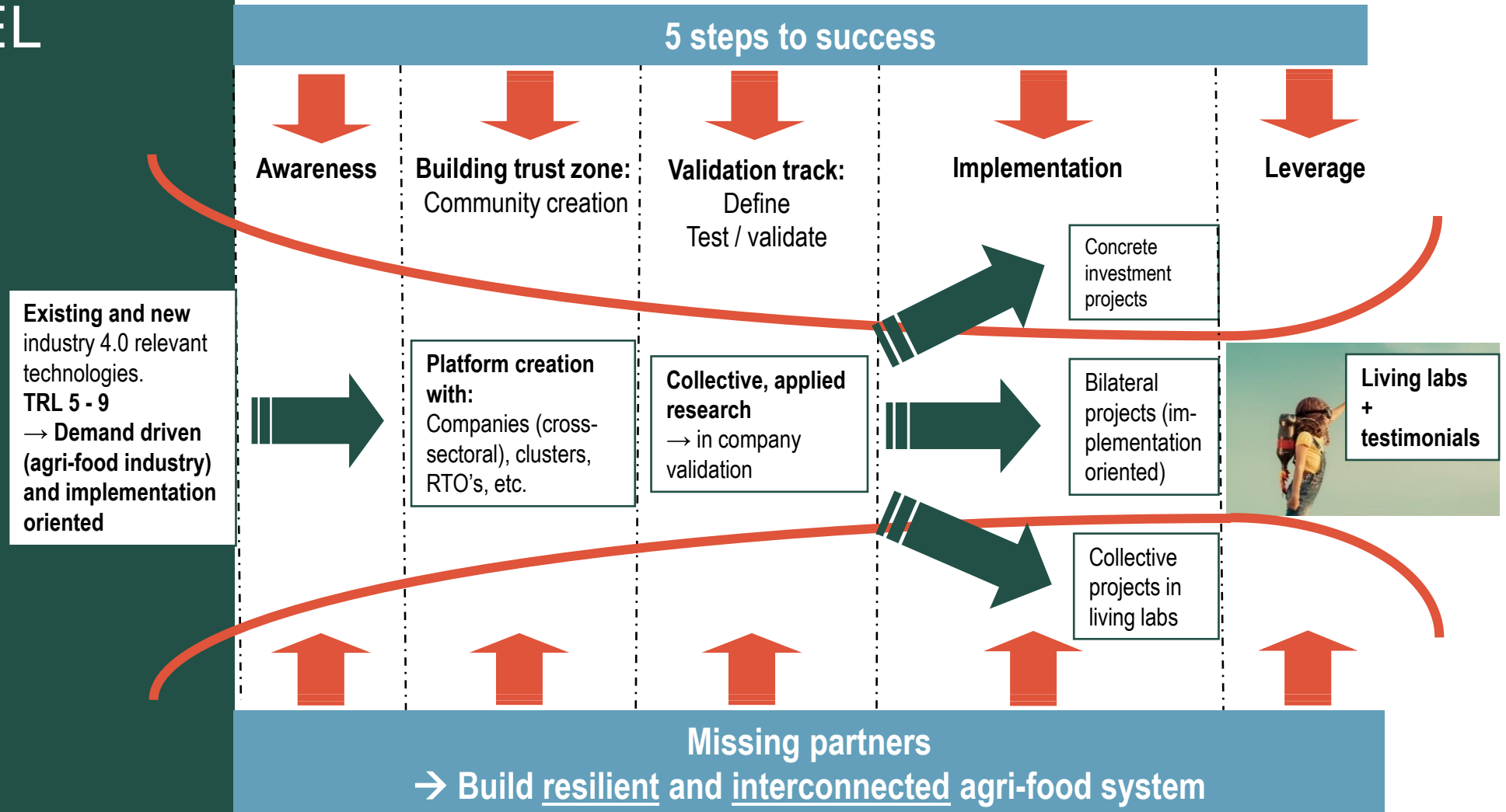


**Living labs** for digital innovation in the agri-food industry are innovation driven organisations that **facilitate and foster collaborative innovation** between the different stakeholders in the industry 4.0 ecosystem to **develop, improve, test and validate digital solutions** to specific challenges in the agri-food industry.



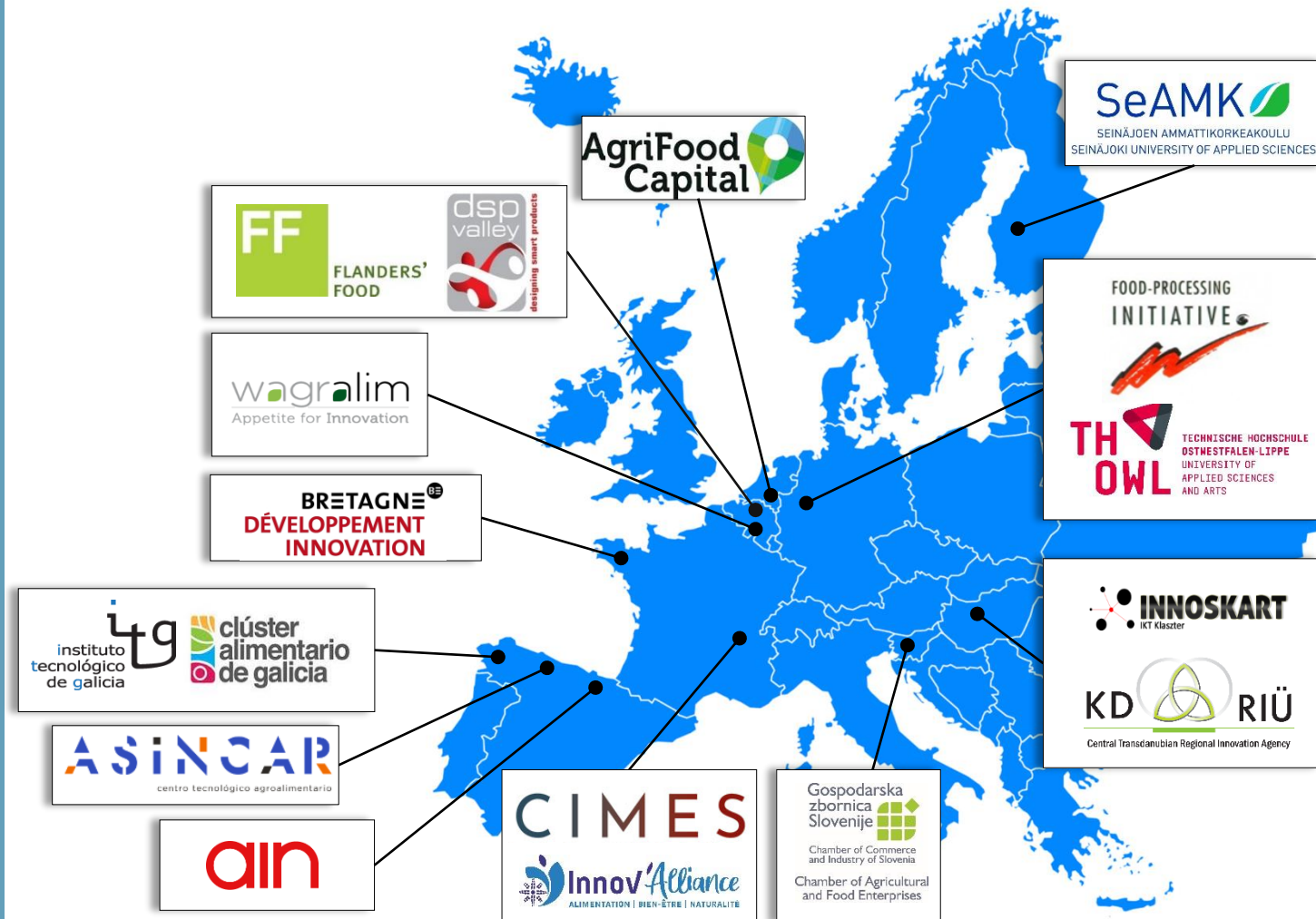
# STEPWISE APPROACH: THE FUNNEL

## Methodology



# THE PARTNERSHIP

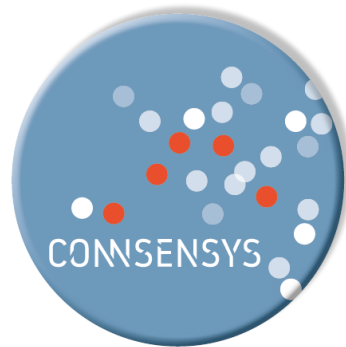
## Regular members





# EU PROJECTS

## Smart Sensors 4 Agri-food: 2 approved projects



Connecting smart  
sensor systems for  
the food industry  
**COSME**  
1/11/'18 – 31/10/'20



Smart sensor systems for  
food safety, quality  
control and resource  
efficiency in the food  
processing industry  
**INNOSUP**  
1/05/'19 – 30/04/'22



Strategy  
Roadmap



EU network  
living labs



Study visits  
Matchmaking



Demo  
cases



**Vouchers (€) for SMEs - 2 open calls:**

- € 5 mio → 79% for SMEs
- Direct (vouchers): € 2.875.000
- Max € 60.000 / SME

# SMART SENSORS 4 AGRI-FOOD: PARTNERSHIP AGREEMENT

What?  
Why?

Content:

## **Cluster Partnership Agreement**

(annexes form integral part of this Agreement):

- Annex 1: Governance
- Annex 2: Strategy
- Annex 3: Implementation Roadmap

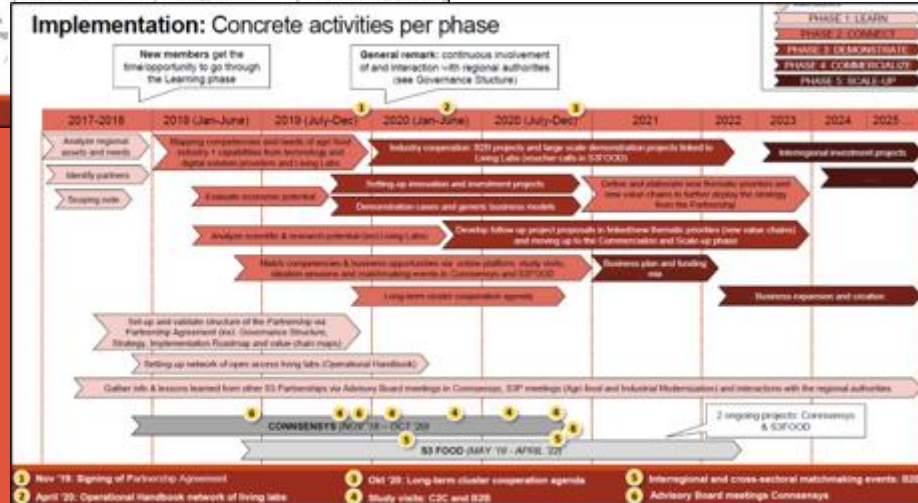
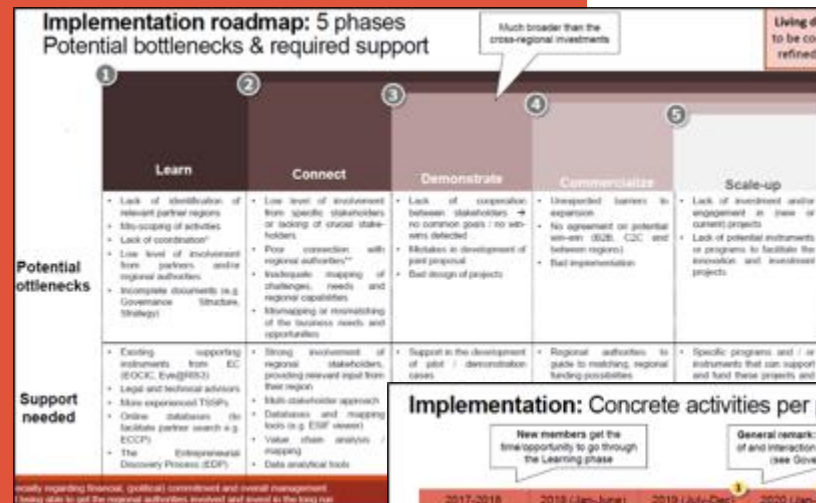
Important!:

- Guarantee long-term sustainability of our Partnership
- Structure and divide responsibilities between the different Partners



# SMART SENSORS 4 AGRI-FOOD: PARTNERSHIP AGREEMENT

12 Regions  
17 Regular Members  
21 Associated Organizations



## Annex 2: Strategy 'Smart Sensors 4 Agri-food'

25/10/'19

### The challenges

The agri-food industry is taking its first steps towards Industry 4.0. Some larger enterprises with a broad network, connections with research and technology organisations (RTOs) and international affiliations are up-to-date and aware of the most recent technological developments and its opportunities. However, all over Europe, the agri-food industry is typically a small and medium-sized enterprises (SMEs) driven sector. Even 'large companies' are, relatively speaking (in comparison with other sectors), quite small.

For the agri-food industry, the creation of an IoT environment and introducing big data management is a huge challenge.

Needs (sensor product person the job)

Remove data at related extract take pre machine

The agri-food system



## Annex 1: Governance Structure 'Smart Sensors 4 Agri-food'

On 25/10/19 the Smart Sensors 4 Agri-food Partnership, hereafter referred to as the 'Partnership' has been set up between the following Regular Members (coming from 13 different regions):

- Asociación de Investigación de Ind. Cárnicas del Principado de Asturias (ASINCAR) coming from the Asturias region (Spain)
- Corallia coming from the Attica region (Greece)
- CIMES and Terralia-PASS coming from the Auvergne-Rhône-Alpes region (France)
- Bretagne Développement Innovation coming from the Brittany region (France)
- Danish Food Cluster coming from the Central Denmark region (Denmark)
- Innoskard ICT Cluster coming from the Central Transdanubia region (Hungary)
- Flanders' FOOD and DSP Valley coming from the Flanders region (Belgium)
- Asociación Cluster Alimentario de Galicia (CLUSAGA) and Fundación Instituto Tecnológico de Galicia (ITG) coming from the Galicia region (Spain)
- Asociación de la Industria Navarra coming from the Navarra region (Spain)
- AgriFood Capital BV coming from the North Brabant region (The Netherlands)
- Food-Processing Initiative e.V. coming from the North-Rhine Westphalia region (Germany)
- CCIS - Chamber of Agricultural and Food Enterprises with the strategic research and innovation partnership SRIP HRANA coming from Slovenia
- Wagralim coming from the Wallonia region (Belgium)

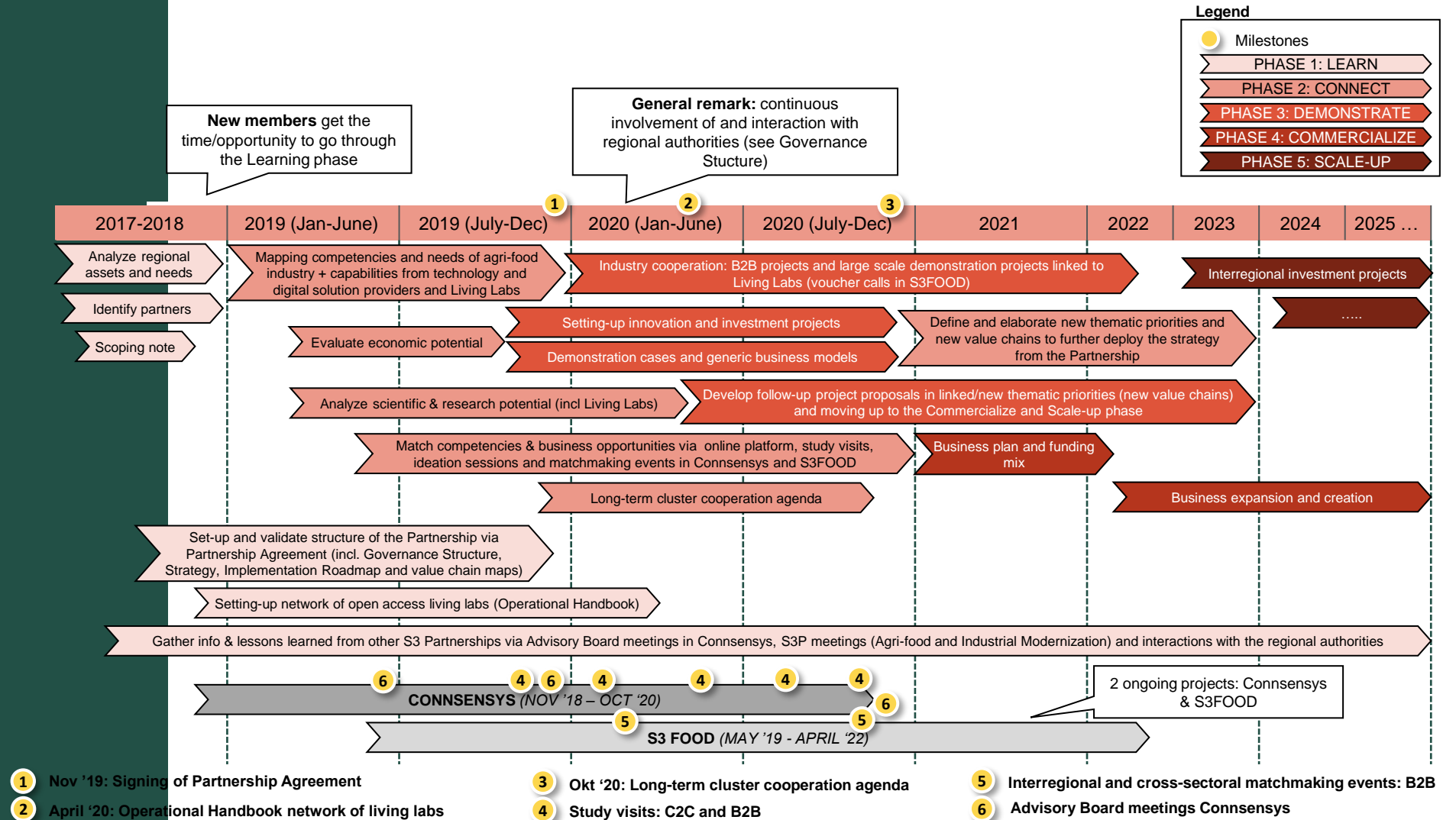
The Partnership is also composed by the following Associated Organisations:

Region	Associated Organisation(s)
Asturias (Spain)	Instituto de Desarrollo Económico del Principado de Asturias (IDEPA) (public government), Fundación Centro Tecnológico de la Información y la Comunicación (CTIC) (Research & Technology Organisation (= RTO)), Fundación IDONIAL (IDONIAL) (RTO)
Auvergne-Rhône-Alpes (France)	Vegepolys Valley (Cluster) and Minalogic (Cluster)



# IMPLEMENTATION ROADMAP

## Concrete activities per phase



# SMART SENSORS 4 AGRI-FOOD: PARTNERSHIP AGREEMENT

## Attention points

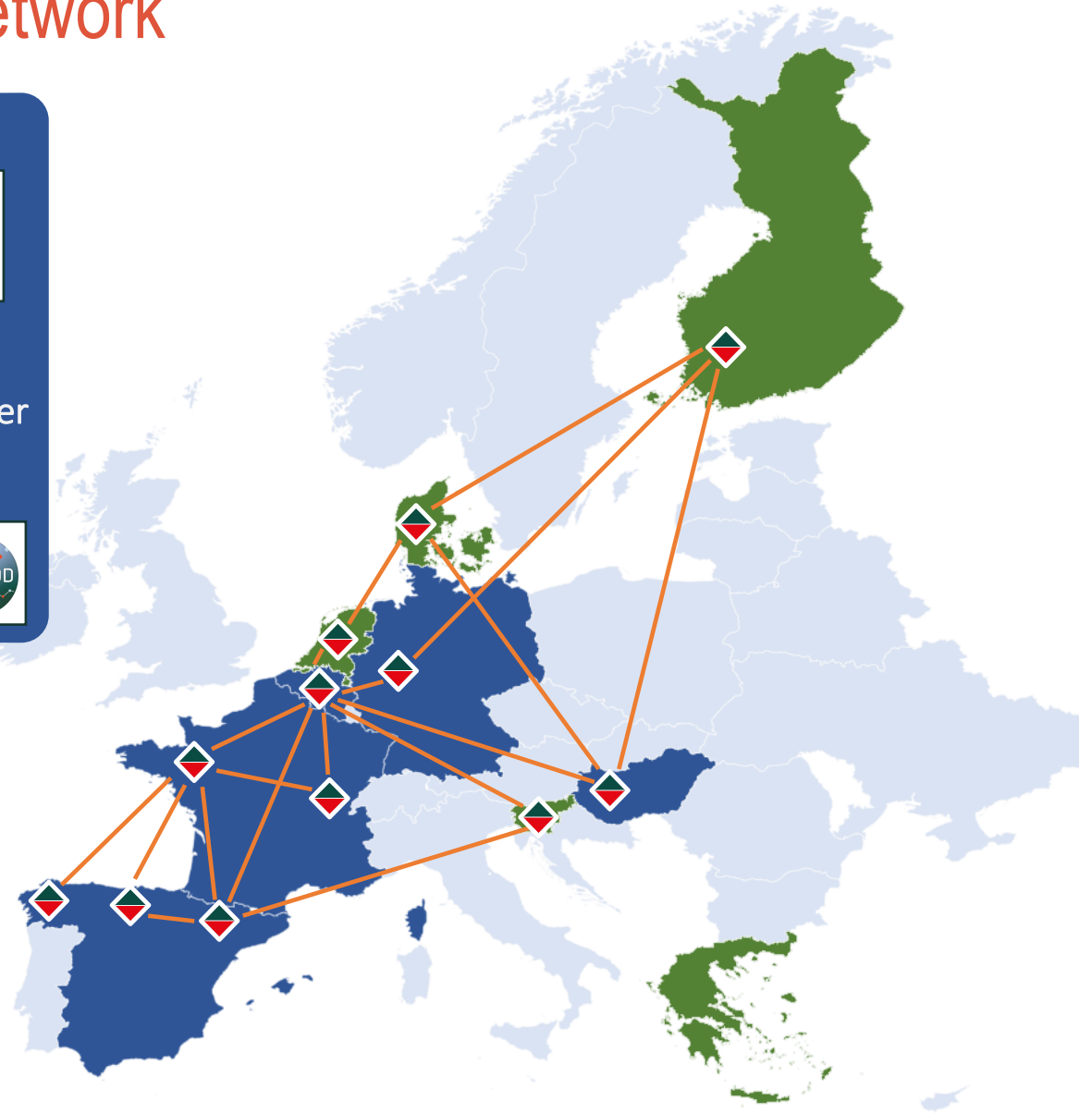
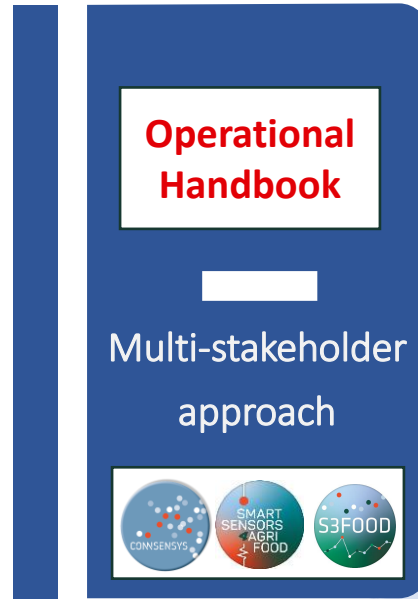
- Agreement between clusters – RTO's:
  - Max 2 Regular Members per region and Associated Organisations
  - Letter of Support from regional authorities
- Informal network of organisations
- Established Office: organized by Flanders' FOOD, who is a legal entity:
  - Will stay fixed at Flanders' FOOD
  - Responsible for all the administrative and financial tasks linked to the Partnership
- Structure:
  - Steering Committee
  - Board
  - Chair and Vice-Chair
  - Working groups: Communication – Project Generation – Technology Intelligence





# NETWORK OF LIVING LABS

## European network



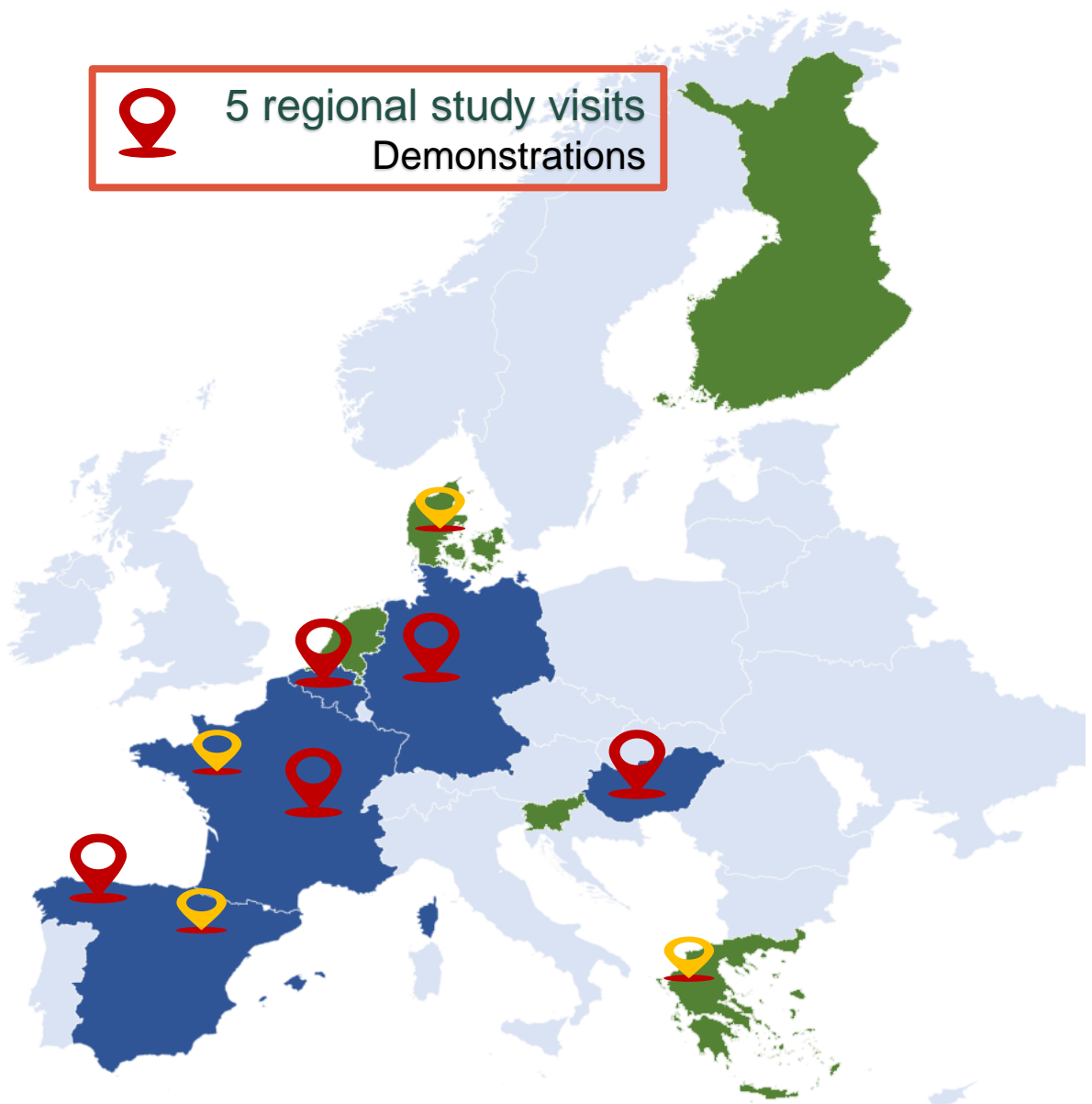
# NETWORK OF LIVING LABS



23 Living Labs  
Unique expertise and infrastructure

# European network

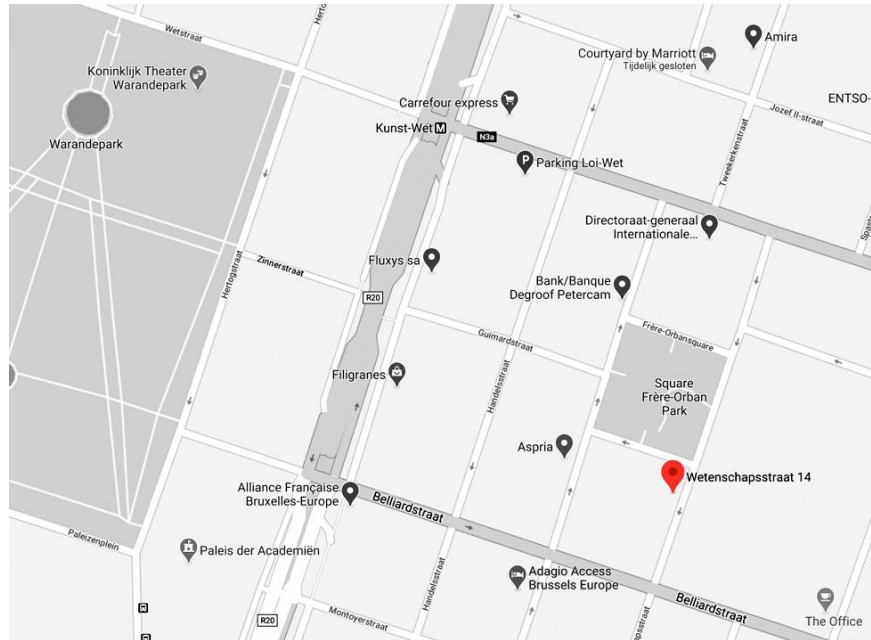
5 regional study visits  
Demonstrations



# ESTABLISHED OFFICE

Wetenschapsstraat 14 A, 1040 Brussels (3rd floor)  
veerle.rijckaert@flandersfood.com • +32 472 85 11 00

[www.flandersfood.com](http://www.flandersfood.com)



THANK YOU  
for your attention

