



Co-funded by
the European Union



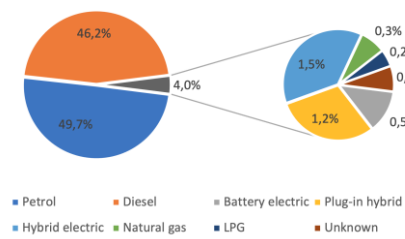
Sustainable Aftersales

Overview of current state in Belgium

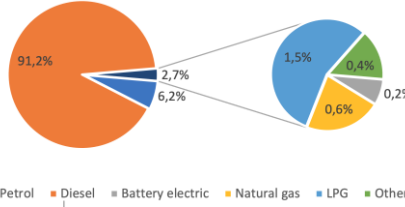
Structure of vehicle population

Number of vehicles:

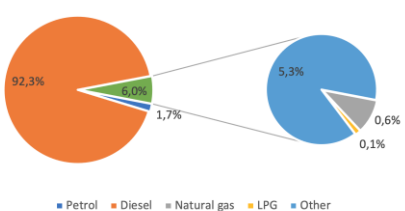
Passenger Cars:



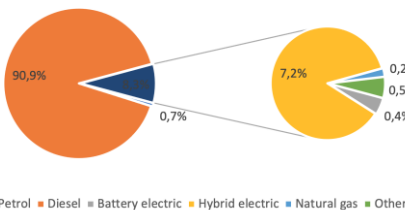
Light commercial vehicles:



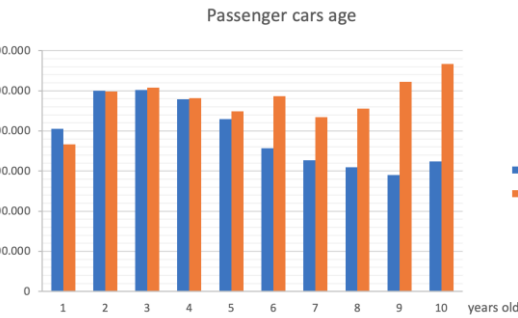
Heavy commercial vehicles:



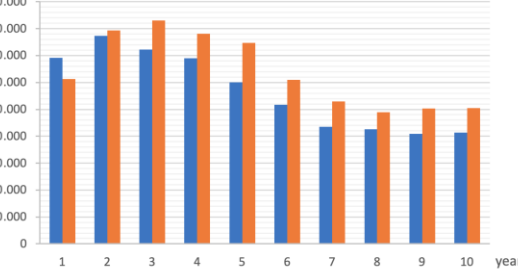
Busses:



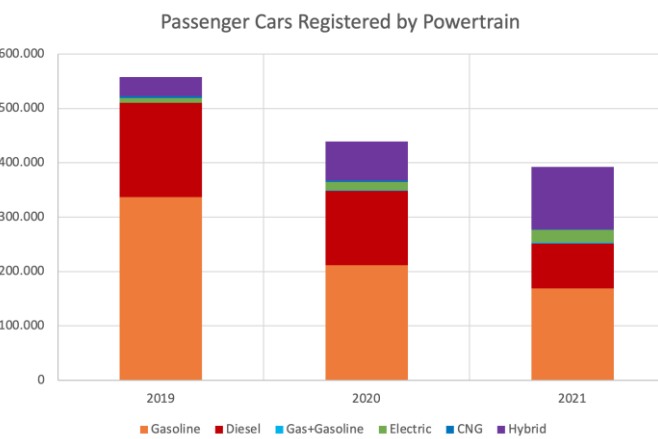
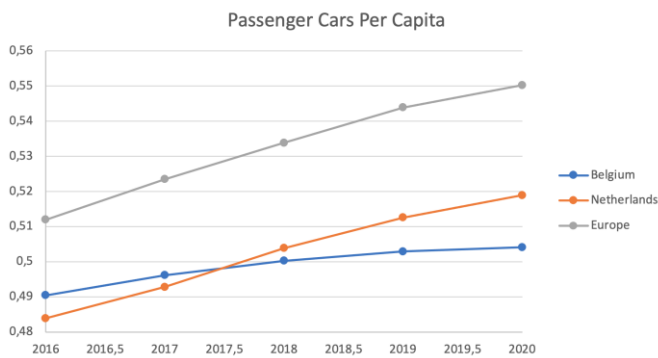
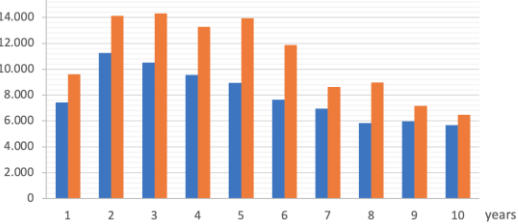
Age of the vehicles per type:



Light Commercial Vehicles age



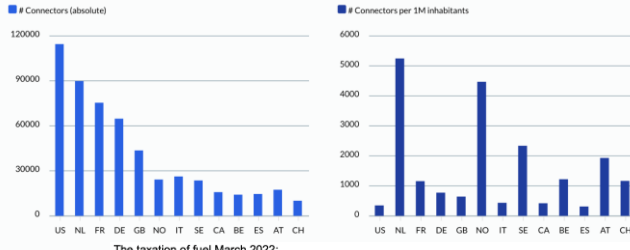
Medium/Heavy Commercial Vehicles age



Regulatory guidance and energy distribution network

Road taxes depends on the age, emissions and the "fiscal horsepower"

Top countries and # of connectors per capita



	Petrol E10	Diesel B10	LPG	CNG	Hydrogen	Electricity
Cost of the product	0,8188	1,0712	0,6283			
Distribution cost	0,1844	0,1882	0,2019			
APETRA subsidy	0,0088	0,0088	0,0			
Excises and energy tax	0,6002	0,6002	0,0			
VAT (21%)	0,3389	0,3927	0,1748			
TOTAL	1,9510 €/L	2,2610 €/L	1,0050 €/L	3,470 €/Kg	9,9 €/Kg	0,60 €/kWh

Common causes of inspection failure:

- A fault in the braking system.
- Defect in the lighting system of the vehicle.
- A defect to the tires.
- Emissions: a worn/older exhaust system can have some defects.

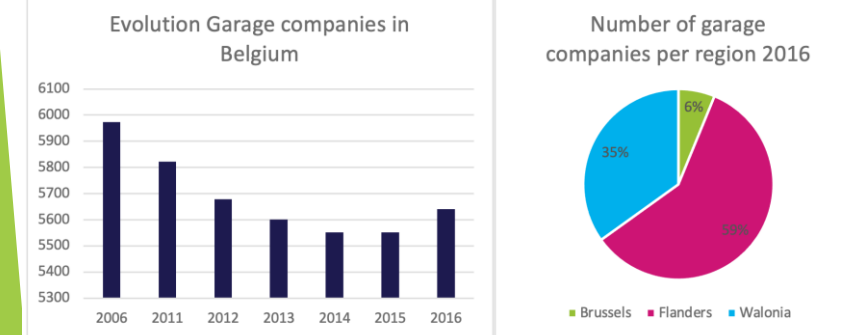
81,4% of vehicles had no problems at all during inspection

The interval between inspections depends on the age and the mileage of the vehicle:

- New car after 4 years
- Otherwise annually with exceptions

Structure of the aftersales sector

97.3% of a car's materials are recycled.
Of this 97.3%, another 24% is intended for reuse, such as the engine, mirrors,...



Around 370 000 employees in the after sales sector in Belgium.

Total amount of employees in a garage per region												
Region	2006	2007	2008	2009	2010	2011	2012	2013	2014	2015	2016	2016 in %
Brussels	7212	7120	7414	7154	7238	7028	6544	6359	5980	6594	5849	-18,9%
Flanders	26124	26723	26301	35984	26462	26993	26679	26347	26228	26341	26608	1,9%
Walonia	13334	13597	13409	13320	13804	14172	13626	13379	13602	13028	13353	0,1%
Total	46670	47440	44124	46458	47504	48193	46849	46085	45810	45963	45810	-1,8%
												-0,3%
												100%

Purchase or transfer	
1. VAT on vehicle sales servicing, repair & parts	8.0
2. Sales & registration taxes	0.5
3. Annual ownership taxes	1.7
4. Fuels & lubricants	8.7
5. Others	
Driving license fees	0.0
Insurance taxes	1.0
Tolls	0.7
Customs duties	-
Other taxes	0.8
TOTAL (national currencies)	21.4
TOTAL (EURO) ²	21.4

The total gas stations: 3085

- 3 public hydrogen stations
- 348 LPG stations
- 177 CNG stations
- 19 LNG stations

In 2021 the where 45 recharge points for every 100km Highway and 14 vehicles for every recharge point.

Normal power recharging (up to 22 kW)

Network	Own prices - Pay as you go	Plugsurfing prices	Chargemap prices	New Motion prices
Allego	0.325€/kWh (billed to the EMSP)	Variable (11kW): 0.32€/kWh; 0.39€/kWh	0.433€/kWh (11kW, 22kW)	0.34€/kWh
Blue corner	0.40€/kWh (AC) + 0.01€/min if charge completed and vehicle still plugged	0.48€/kWh after 8h adding 0.01€/min after 20h 0.48€/kWh (3.7kW, 11kW)	-	0.4€/kWh + 0.5€/session + 0.01€/min (11kW)
EV Box	Not available	0.36€/kWh	-	0.35€/kWh (11kW)
Last mile Solutions	Not available	1 station for free	Variable Free: 0.333€/kWh (22kW); 0.466€/kWh + 0.666€/session (11kW)	0.34€/kWh (11kW); 0.48€/kWh (3.7kW)

High power recharging (>22 kW)

Network	Own prices - Pay as you go	Plugsurfing prices	Chargemap prices	New Motion prices
Allego	0.65€/kWh (billed to the EMSP)	Variable: 0.72€/kWh; 0.65€/kWh; 0.25€/min+0.76€/kWh	0.88€/kWh	0.69€/kWh
Blue corner	0.69€/kWh (AC) + 0.25€/min if charge completed and vehicle still plugged	-	-	-
EV Box	Not available	-	-	-
Last mile Solutions	Not available	2€/session + 0.80€/kWh (one station)	-	0.48€/kWh (50kW); 0.34€/kWh (43kW)

Andrey Giritchev, Cedric De Monie, Sven Goeman, Staf Guldemont, Thibault Laurens, Erik José Busellato Verwilt