

SEGA™

SEGA™
S
E
N
S
I
T
I
V
E

Championship
PRO-AM

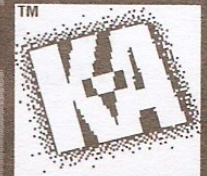
INSTRUCTION
MANUAL



MIDWAY

LICENSED BY SEGA ENTERPRISES, LTD. FOR
PLAY ON THE SEGA™ GENESIS™ SYSTEM.

KIDS TO ADULTS



CONTENT RATED BY
ESRB

CONTENTS

Epilepsy Warning

READ BEFORE USING YOUR SEGA VIDEO GAME SYSTEM

A very small percentage of individuals may experience epileptic seizures when exposed to certain light patterns or flashing lights. Exposure to certain patterns or backgrounds on a television screen or while playing video games may induce an epileptic seizure in these individuals. Certain conditions may induce undetected epileptic symptoms even in persons who have no history of prior seizures or epilepsy. If you, or anyone in your family, has an epileptic condition, consult your physician prior to playing. **If you experience any of the following symptoms while playing a video game--dizziness, altered vision, eye or muscle twitches, loss of awareness, disorientation, any involuntary movement or convulsions--IMMEDIATELY discontinue use and consult your physician before resuming play.**



This official seal is your assurance that this product meets the highest quality standards of SEGA™. Buy games and accessories with this seal to be sure that they are compatible with the SEGA™ GENESIS™ SYSTEM.

©1992 Rare Ltd.

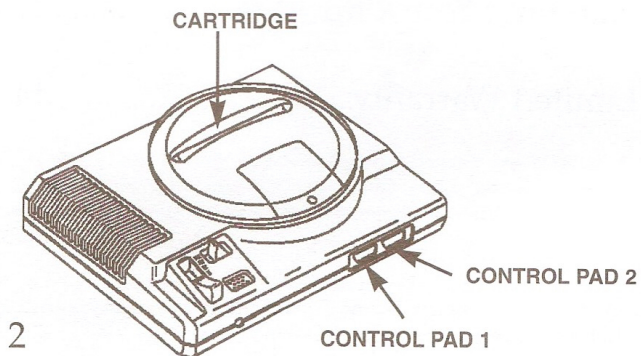
Licensed to Midway Home Entertainment Inc., by Rare Coin-It, Inc.
SEGA™ and GENESIS™ are trademarks of Sega Enterprises, Ltd.

Starting Up.....	2
Overview.....	3
Take Control.....	4
Beginning The Race.....	5
Items To Collect.....	6
Items To Avoid.....	8
Scoring.....	9
Status Panel.....	10
The Tracks.....	12
Handling Your Cartridge.....	13
Limited Warranty.....	14

STARTING UP

1. Set up the Genesis System and plug in Control Pad 1. (CHAMPIONSHIP PRO-AM™ is for one player only.)
2. Make sure the power switch is OFF. Then insert the CHAMPIONSHIP PRO-AM™ cartridge into the console and press it down firmly.
3. Turn the power switch to ON. The Sega screen will appear.
4. Press START when the title screen appears.

IMPORTANT: Always make sure the power switch is OFF before inserting or removing the Genesis cartridge.



OVERVIEW



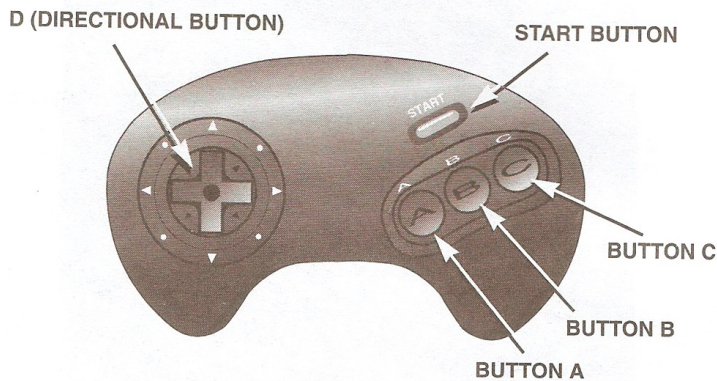
And the legend lives on...If you're looking for fast and furious racing competition, CHAMPIONSHIP PRO-AM™ is your game!

Swerve and screech through 24 exciting levels of racing challenge. The tracks get fierce as water, oil slicks, pop-up walls and 5 nasty competitors try to do you in.

Pick up those TURBO, TOP SPEED and STICKY TIRE add-ons to give you that extra edge. And if you're a real hot shot, there are MISSILES and BOMBS to help even the odds. Pick up BONUS LETTERS to further enhance your racer.

Are you skilled enough to rack up the points, trophies and track records it takes to be a CHAMPIONSHIP PRO-AM™ racer?

TAKE CONTROL



Start Button

- Starts the game from the Start Screen.
- Pauses the race.

Button A

- Enters selected letters on the Registration Screen
- Accelerates your car

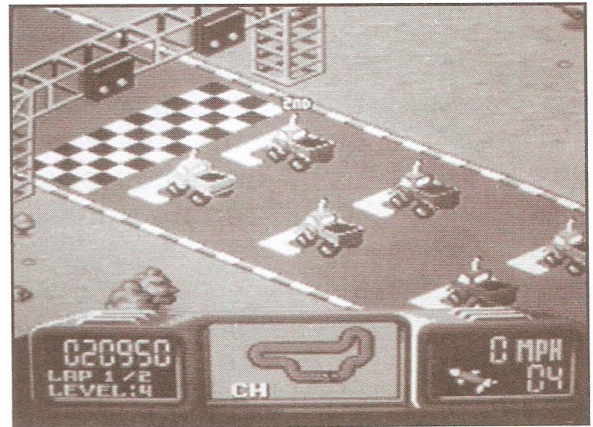
Buttons B & C

- Enters selected letters on the Registration Screen.
- Fires missiles and drops bombs. If you have no missiles or bombs, these buttons will sound the horn.

D Button (Directional Button)

- Selects letters for your name registration.
- Steers your car during a race.

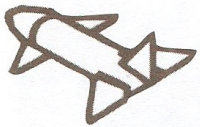
BEGINNING THE RACE



Before heading out to the track, enter your name on the registration screen. This will keep track of your high scores and track records. Use the D-button (Directional Button) to select your letters, then press Buttons A, B, or C to enter your choices.

At the start of each race, there will be six cars lined up on the starting grid. You will automatically be placed in the pole position for your first race. From then on, your position will be determined by your performance -- so you'll have to earn it!

ITEMS TO COLLECT



- **MISSILE** - Launch these projectiles at your opponents and watch 'em fly! Comes equipped with 5 ammo units.



- **BOMB** - Drop these from behind your car to ward off tailgaters. Comes equipped with 5 ammo units.

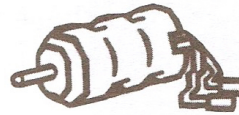


- **AMMO** - These stars add one unit of ammo to your arsenal, if you've already collected a weapon from the track.



- **TIRES** - Burn rubber to collect these from the track to improve your racer's handling.

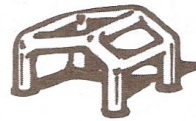
ITEMS TO COLLECT



- **ENGINE** - Increases your top speed.



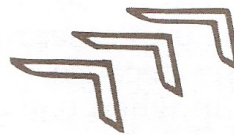
- **TURBO** - Boosts your acceleration.



- **ROLL CAGE** - Makes your vehicle immune to crash damage.

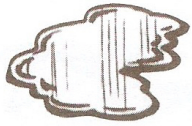


- **BONUS LETTERS** - If you're skilled enough to collect the letters that spell "CHAMPION" you will receive a better and faster racer.



- **ZIPPERS** - Fasten your seat belts before you hit these!

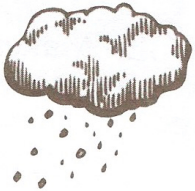
ITEMS TO AVOID



- **PUDDLE** - Avoid these obstacles or they'll slow you down.



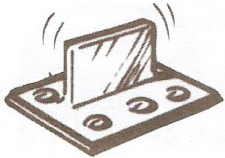
- **OIL PATCH** - Steer away from this slick surface or you'll be taking an unintended spin!



- **RAIN CLOUD** - Dodge this inclement obstacle or it'll put a damper on your speed.



- **SKULL** - Use your head when you see one of these or you'll lose a unit of ammo from your arsenal.



- **POP-UP WALL** - Be leery of these unpleasant road surprises because they'll pop up when you least expect it!

SCORING

Championship PRO-RACING TOP DRIVERS					
1ST	J..SJP	..243925			
2ND	..HCG	..225875			
3RD	..CTJ	..171500			
4TH	..TDS	..141300			
5TH	..SMS	..074425			
6TH	..KEN	..071075			

5000 - Awarded for each letter upon completion of the word "CHAMPION".

2000 - Awarded for finishing 1st in a race.

1000 - Awarded for each bonus letter obtained from the track.

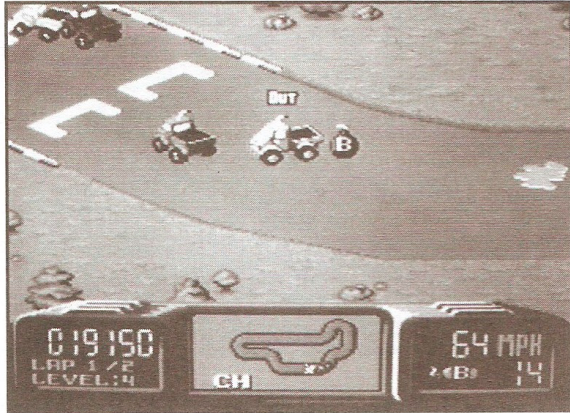
500 - Awarded for finishing 2nd in a race, or for acquiring a Missile or Bomb from the track.

200 - Awarded for each Roll Cage picked-up during a race.

100 - Awarded for finishing 3rd in a race, or for each Tire, Turbo, Engine or Ammo star picked up during a race.

25 - Awarded as your vehicle progresses around the track.

STATUS PANEL



The STATUS PANEL can be found at the bottom of the screen during a race:

SCORE - Lets you know the score!

LAP COUNTER - Displays the number of laps completed and the total number of tracks (i.e., 2/5 shows 2 laps completed out of a 5 lap race).

LEVEL/TRACK NUMBER - Shows what level you're currently on.

STATUS PANEL

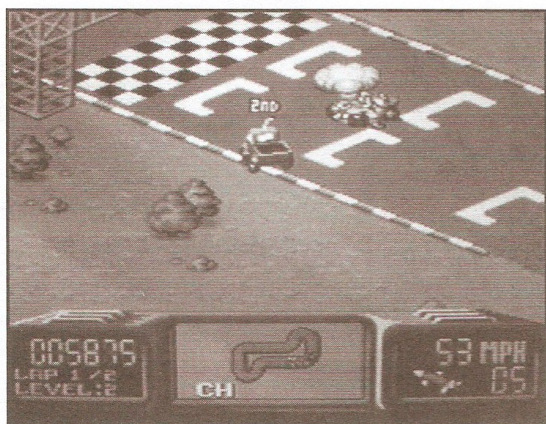
MAP - Gives you an overhead view of each track, and the position of race cars within it, during the race.

BONUS LETTERS - Displays the bonus letters that you have collected.

SPEEDOMETER - Clocks your speed in miles per hour.

WEAPON - Shows the active weapon and the amount of ammo remaining. If you have missiles and then pick up a bomb from the track, the weapons will swap, but the ammo will remain the same.

THE TRACKS



There are 24 levels in CHAMPIONSHIP PRO-AM™, raced on 8 different tracks. Each race ranges from 2 to 9 laps.

Your position in the race is displayed above your racer - 1st, 2nd, 3rd, or OUT.

After the Trophy Room screen, the NEXT RACE screen appears. This shows the level, total laps and track condition (from poor to fast) of the next race.

If you do not come in 1st, 2nd, or 3rd, place in any race, your game is over. You may continue up to two times, but with each continue you lose all the points that you have accumulated throughout the game.

HANDLING YOUR CARTRIDGE

- The Sega Genesis Cartridge is intended for use exclusively for the Sega Genesis System.
- Do not bend it, crush it or submerge it in liquids.
- Do not leave it in direct sunlight or near a radiator or other source of heat.
- Be sure to take an occasional break during extended play, to rest yourself and the Sega Cartridge.

Warning to owners of projection televisions:

Still pictures or images may cause permanent picture-tube damage or mark the phosphor of the CRT. Avoid repeated or extended use of video games on large-screen projection televisions.

LIMITED WARRANTY

Midway Home Entertainment Inc. warrants to the original purchaser of this Midway Home Entertainment Inc. software product that the medium on which this computer program is recorded is free from defects in materials and workmanship for a period of ninety (90) days from the date of purchase. This Midway Home Entertainment Inc. software program is sold "as is" without express or implied warranty damages of any kind, and Midway Home Entertainment Inc. is not liable for any losses or damages of any kind resulting from the use of this program. Midway Home Entertainment Inc. agrees for a period of ninety (90) days to either repair or replace, at its option, free of charge, any Midway Home Entertainment Inc. software product, postage paid, with proof of purchase, at its Factory Service Center.

This warranty is not applicable to normal wear and tear. This warranty shall not be applicable and shall be void if the defect in the Midway Home Entertainment Inc. software product has arisen through abuse, unreasonable use, mistreatment or neglect. THIS WARRANTY IS IN LIEU OF ALL OTHER WARRANTIES AND NO OTHER REPRESENTATIONS OR CLAIMS OF ANY NATURE SHALL BE BINDING ON OR OBLIGATE MIDWAY HOME ENTERTAINMENT INC. ANY IMPLIED WARRANTIES APPLICABLE TO THIS SOFTWARE PRODUCT, INCLUDING WARRANTIES OF MERCHANTABILITY AND FITNESS FOR A PARTICULAR PURPOSE, ARE LIMITED TO THE NINETY (90) DAY PERIOD DESCRIBED ABOVE. IN NO EVENT WILL MIDWAY HOME ENTERTAINMENT INC. BE LIABLE FOR ANY SPECIAL, INCIDENTAL, OR CONSEQUENTIAL DAMAGES RESULTING FROM POSSESSION, USE OR MALFUNCTION OF THIS SOFTWARE PRODUCT.

Some states do not allow limitations as to how long an implied warranty lasts and/or exclusions or limitations of incidental or consequential damages so the above limitations and/or exclusions of liability may not apply to you. This warranty gives you specific rights, and you may also have other rights which vary from state to state.

MIDWAY CUSTOMER SUPPORT
903-874-2683
10:00am -6:30pm Central Time
Monday - Friday

Midway Home Entertainment Inc.
1800 S. Business Hwy 45
Corsicana, TX 75110

NOTES

NOTES



MIDWAY HOME ENTERTAINMENT INC.
1800 SO. BUSINESS HIGHWAY 45
CORNICANA, TEXAS 75110

LICENSED BY SEGA ENTERPRISES, LTD.
FOR PLAY ON THE SEGA™ GENESIS™ SYSTEM.

SEGA AND GENESIS ARE TRADEMARKS
OF SEGA ENTERPRISES, LTD.
ALL RIGHTS RESERVED.

Printed In U.S.A.