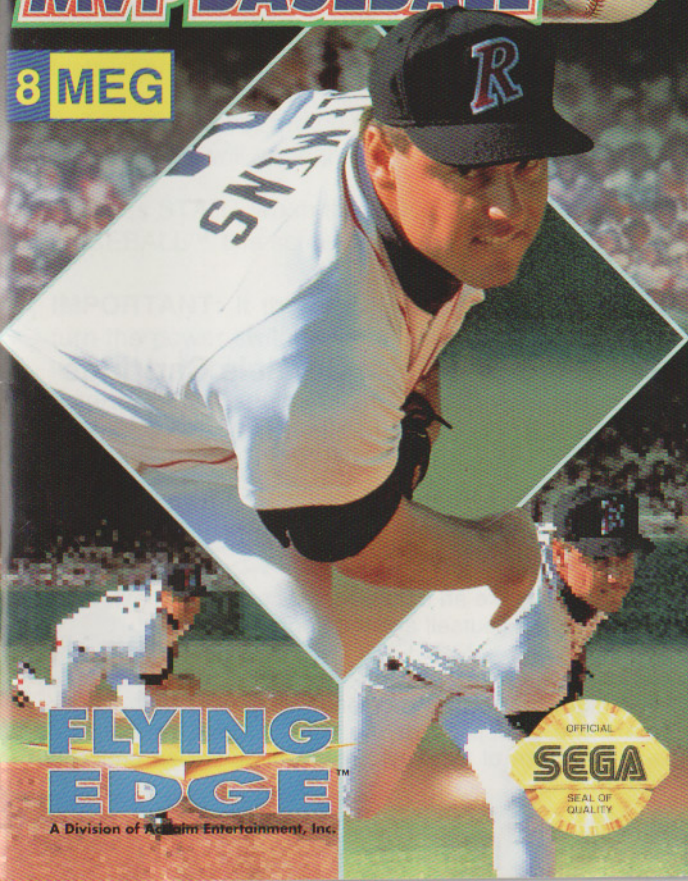


SEGA  
**GENESIS**  
16-BIT CARTRIDGE

GENESIS INSTRUCTION MANUAL

**ROGER CLEMENS' MVP BASEBALL**™

8 MEG



**FLYING  
EDGE**™

A Division of Acclaim Entertainment, Inc.





This official seal is your assurance that this product meets the highest quality standards of SEGA™. Buy games and accessories with this seal to be sure that they are compatible with the SEGA™ GENESIS™ SYSTEM.

SEGA and GENESIS are trademarks of Sega Enterprises Ltd.

## Handling The Sega Genesis Cartridge

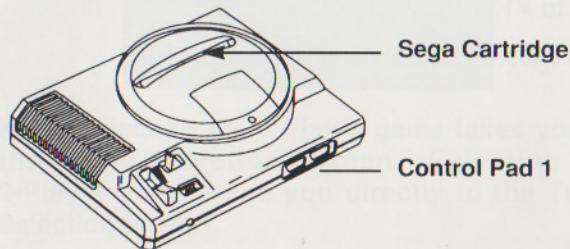
- The Sega Genesis Cartridge is intended for use exclusively for the Sega Genesis System.
- Do not bend it, crush it, or submerge it in liquids.
- Do not leave it in direct sunlight or near a radiator or other source of heat.
- Be sure to take an occasional recess during extended play, to rest yourself and the Sega Cartridge.

Warning to owners of projection televisions: Still pictures or images may cause permanent picture-tube damage or mark the phosphor of the CRT. Avoid repeated or extended use of video games on large-screen projection televisions.

# GETTING STARTED

1. Make sure the power switch is OFF.
2. Insert the ROGER CLEMENS' MVP BASEBALL™ cartridge into the Genesis™ System as described in your GENESIS™ SYSTEM instruction manual.
3. Turn the power switch ON. In a few moments the Sega screen will appear.
4. Press START when the ROGER CLEMENS' MVP BASEBALL™ title screen appears.

**IMPORTANT:** If the Sega screen doesn't appear, turn the power switch OFF. Make sure your system is set up correctly and the cartridge is properly inserted, with its label facing toward you. Then turn the power switch ON again. Always make sure the power switch is OFF before inserting or removing the Sega cartridge.





# BASEBALL...LIKE THE PROS

Home runs, double plays, stolen bases, squeeze plays...nothing beats watching baseball...except playing it! With Roger Clemens' MVP Baseball, you're not watching from the outside anymore...you're in the game, on the field, and seeing from the same view as the players themselves!

From fly-balls coming right at you to interactive close-up plays at any of the bases, experience hardball like never before. Dive for sinking line drives! Pick-off runners on base. Drive-in the winning run!

The season promises to be grueling. You're two games behind in the standings but, you've got a dominant bullpen, four batters averaging over .300, and a Gold Glove outfield. This is a dream come true: to play with the big guys like Roger "The Rocket" Clemens and a chance to go all the way to #1.

Get ready for the opening pitch. Play Ball!

# PLAYER SELECTION

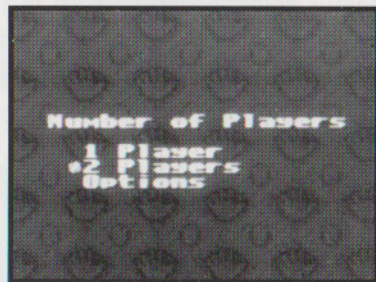
To select the number of players or to reach the Options Screen, press the D-BUTTON UP or DOWN to move the cursor to your choice, and press the A-BUTTON.

## 1-Player

-You against the computer in an Exhibition or Regular Season game. (See Game Selection on page 5)

## 2-Player Options

-You against a friend in an Exhibition game.  
-Takes you to the Options Screen



**Note:** Selecting the 1-Player game takes you to the Game Selection Screen. Selecting the 2-Player game takes you directly to the Team Selection Screen.



# OPTIONS

## OPTIONS SCREEN



To turn the music ON or OFF, press the D-BUTTON UP or DOWN to move the cursor to MUSIC, and press the A-BUTTON to select ON or OFF.

To confirm your selection and return to the Player Selection Screen, move the cursor to EXIT and press the A-BUTTON.

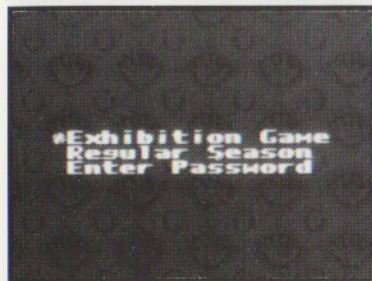
To select a game with, or without 'Errors', move the cursor to ERRORS, using the D-BUTTON UP and DOWN, and press the A-BUTTON to toggle ON or OFF.

Move to 'Controls' and press the A-BUTTON to change the DIRECTIONAL-BUTTON to either a 'Standard' perspective or a 'View dependent' perspective. Make your choice by using UP or DOWN to move the cursor and then press the A-BUTTON to select.

**Note:** The default D-BUTTON perspective is in 'Standard' mode, where the controller perspective is always from behind Home plate (throw RIGHT to First base, UP to Second base, LEFT to Third base and DOWN to Home plate).

In 'View Dependent', while hitting and pitching, your view is from behind home plate. However, when you field a ball from the outfield, the perspective changes. You throw to what you are actually looking at, as if you were actually in the outfield (throw RIGHT to Third base, LEFT to First base, DOWN to Second base and UP to Home plate).

# GAME SELECTION



In the 1-Player mode, the game selection screen allows you to select the type of game you wish to play or to return to a season already in progress.



To select the type of game you want to play, press the D-BUTTON UP or DOWN to move the cursor to your choice.

To confirm your selection, press the A-BUTTON.

**EXHIBITION** - One game against the computer. (To play an Exhibition game against a friend, reset and select a 2-Player game as explained in PLAYER SELECTION on page 3.)

**REGULAR SEASON** - You play three (3) games against each team in your division. Thus, a National Division Season consists of 33 games as opposed to 39 games for the American Division. If your team qualifies, there will also be a best-of-7 game play-off, followed by a best-of-7 game Championship Series. The Regular Season is played entirely against the computer.

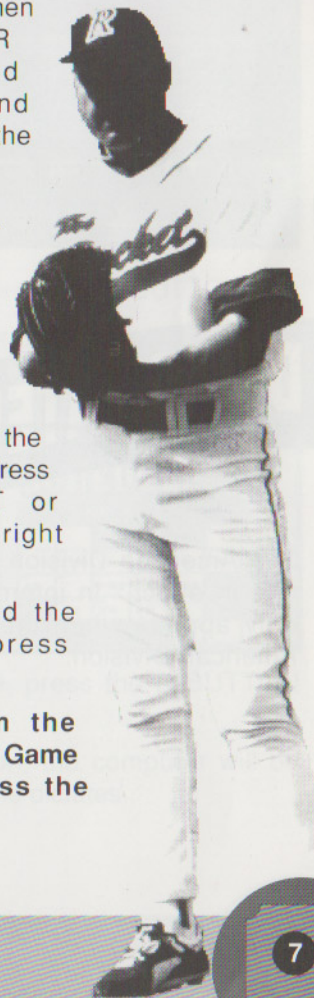
**NOTE:** The standings function just like real baseball standings. While your team is playing, so are other teams in your division. The results of their games are random and determined by the computer. You will only learn your position compared to the other teams when you view the standings screen at the conclusion of each day's play.

**ENTER PASSWORD** - When playing a REGULAR SEASON, a password consisting of letters and numbers is displayed at the end of every game. Keep a record of these passwords as they appear so you can resume the season at the next scheduled game.

To enter a password, press the D-BUTTON UP or DOWN to scroll through the alphabet and numbers. Press the D-BUTTON LEFT or RIGHT to move left or right along the password.

Once you have entered the password correctly, press the A-BUTTON.

**Note:** To return from the Password Screen to the Game Selection Screen, press the B-Button.





# DIVISION SELECTION



To move between the four divisions, press the D-BUTTON LEFT or RIGHT.

To confirm your selection, press the A-BUTTON.

# DESIGNATED HITTERS

The American Division has the designated hitter rule in effect. In interdivisional games, the rule only applies when the home team is from the American Division.

# THE TEAMS

To move through the teams, press the D-BUTTON UP, DOWN LEFT or RIGHT.

To return to the Divisional Selection Screen without choosing a team, press the B-BUTTON.



To confirm your selection, press the A-BUTTON.

If you are playing a 2-Player Exhibition game, Player 2 selects his or her team in the same manner.

## SEASON SCHEDULE

During the Regular Season play, once you have selected your team, you will then see the season schedule.

SEPTEMBER		OCTOBER	
DATE	HOME	DATE	HOME
1	CIN	1	CIN
2	CIN	2	LA
3	LA	3	LA
4	LA	4	SF
5	SF	5	SF
6	PRI	6	PRI
7	PRI	7	PRI
8	PRI	8	PRI
9	PRI	9	PRI
10	NV	10	NV
11	NV	11	NV
12	NV	12	NV
13	NV	13	NV
14	NV	14	NV
15	NV	15	NV
16	NV	16	NV
17	NV	17	NV
18	NV	18	NV
19	NV	19	NV
20	NV	20	NV
21	NV	21	NV
22	NV	22	NV
23	NV	23	NV
24	NV	24	NV
25	NV	25	NV
26	NV	26	NV
27	NV	27	NV
28	NV	28	NV
29	NV	29	NV
30	NV	30	NV
31	NV	31	NV

To alternate between the 2 months of the schedule, press the D-BUTTON LEFT or RIGHT.

During the Regular Season, the computer will be whichever team the schedule dictates.



# TEAM ROSTERS

**NOTE: Home games are displayed in brown, away games in white.**

After reviewing the schedule, to scroll through the division standings and day's match-up screens, and reach your pitching roster, press the A-BUTTON.

# PITCHING ROSTERS

To scroll through the starting pitchers, press the D-BUTTON UP or DOWN.

PLAYER	P	T	ERA	STATUS
HELMENS	1	0	0.00	READY
COLE	1	0	0.00	READY
DUNN	1	0	0.00	READY
FLEE	1	0	0.00	READY
BUCKEN	1	0	0.00	READY
KENNEY	1	0	0.00	READY
KIRBY	1	0	0.00	READY
BAGEYEV	1	0	0.00	READY

To confirm your selection, press the A-BUTTON.

**NOTE: During Regular Season play, starting pitchers must have 3 full days rest between starts. Use the season schedule to calculate the most efficient use of your pitchers.**

To scroll through the roster, press the D-BUTTON UP or DOWN.

To change the batting order, select the player to be repositioned and press the B-BUTTON. Then select the player with whom the first player is to exchange places, and press the B-BUTTON again.

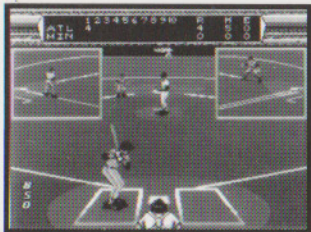
To accept the line-up, press the A-BUTTON.

PLAYER	POS	B	AVG	HR	RBI
KENNEY	2B	R	.262	1	0
COLE	1B	R	.280	1	0
DUNN	3B	R	.260	1	0
FLEE	SS	R	.260	1	0
BUCKEN	LF	R	.260	1	0
KIRBY	CF	R	.260	1	0
BAGEYEV	RF	R	.260	1	0
IRILEV	P	R	.271	1	0
KIRBY	C	R	.260	1	0
KENNEY	P	R	.260	1	0





# GENERAL GAME CONTROLS



Except for close-ups at the bases, the game is viewed from 2 different perspectives.

1. For pitching and hitting, the perspective is from behind the catcher.

2. For fielding, the perspective is from the field looking toward home plate. (The specific view varies depending on where the ball is hit.)

Dependent on whether you are in the 'Standard', or 'View Dependent' control mode, the controls operate differently determined by which of the two perspectives is on the screen.

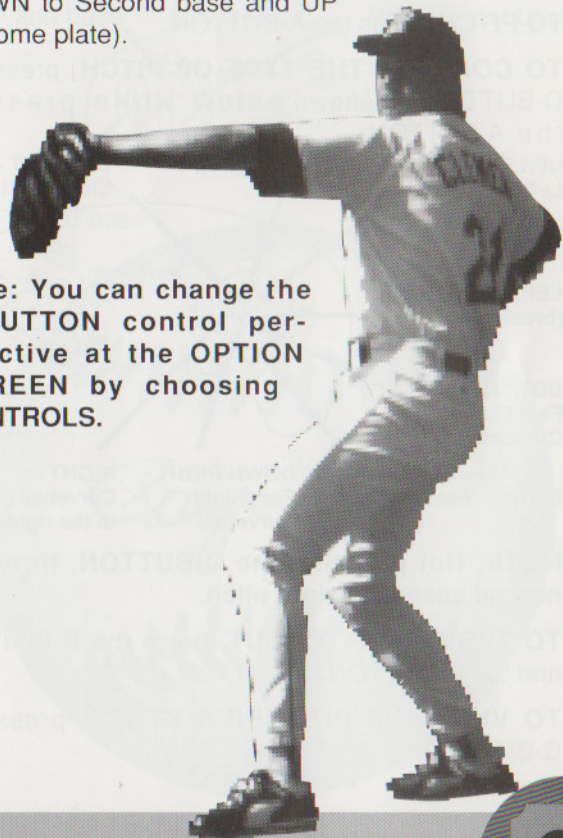
The default D-BUTTON control is 'Standard' mode where the controller perspective is always from behind Home plate (throw RIGHT to First base, UP to Second base, LEFT to Third base and DOWN to Home plate).

In 'View Dependent', while hitting and pitching, your view is from behind home plate. However, when you field a ball from the outfield, the perspective changes.



You throw to what you are actually looking at, as if you were actually in the outfield (throw RIGHT to Third base, LEFT to First base, DOWN to Second base and UP to Home plate).

**Note: You can change the D-BUTTON control perspective at the OPTION SCREEN by choosing CONTROLS.**



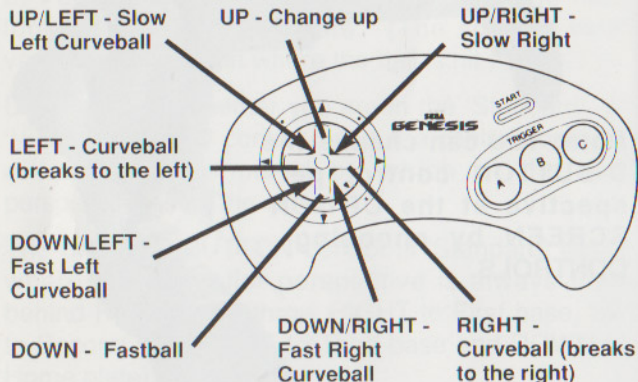


# PITCHING CONTROLS

**TO REPOSITION THE PITCHER ON THE RUBBER** prior to the pitch, press the D-BUTTON LEFT or RIGHT.

**TO PITCH**, press the A-BUTTON.

**TO CONTROL THE TYPE OF PITCH**, press the D-BUTTON as shown below while pressing the A-BUTTON:



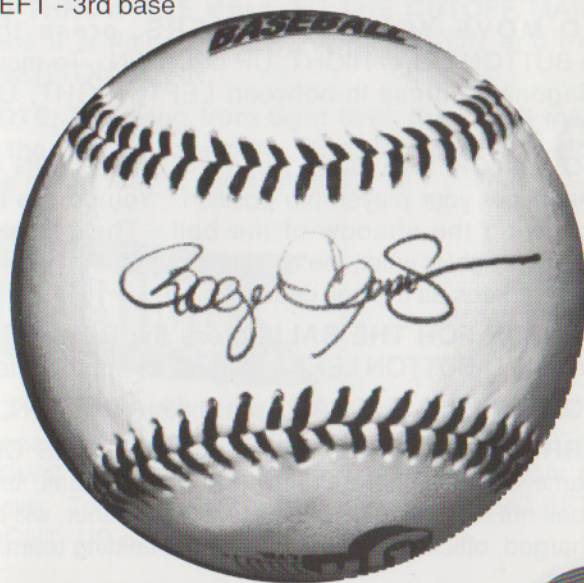
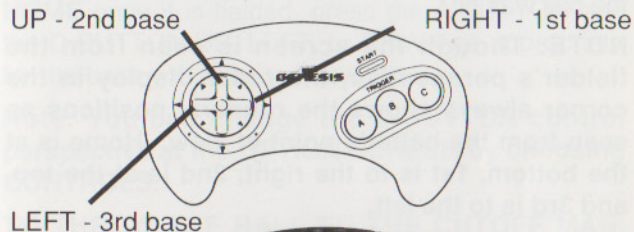
**NOTE:** Not pressing the D-BUTTON, throws a normal speed, straight pitch.

**TO THROW A PITCHOUT**, press the B-BUTTON and the D-BUTTON DOWN.

**TO VIEW THE PITCHER'S STATS**, press the C-BUTTON.

# PICK-OFF ATTEMPTS

**TO PICK-OFF A BASE RUNNER**, press the B-BUTTON plus the D-BUTTON for the appropriate base:





# FIELDING CONTROLS

Once the ball is hit, the perspective changes to the fielder's perspective. Which specific view of the infield, outfield, base, or bases depends upon where the ball was hit.

**NOTE:** Though the screen is seen from the fielder's perspective, the radar display in the corner always shows the runners' positions as seen from the batter's point of view. Home is at the bottom, 1st is to the right, 2nd is at the top, and 3rd is to the left.

**TO MOVE YOUR INFIELDBERS,** press the D-BUTTON LEFT, RIGHT, UP or DOWN. To move diagonally, press in-between LEFT, RIGHT, UP or DOWN.

**TO CATCH THE BALL,** use the D-BUTTON to maneuver your player into position. You do this by following the shadow of the ball. The shadow appears lighter when the ball is higher off the ground and darkens as the ball descends.

**TO DIVE FOR THE BALL,** press the B-BUTTON and the D-BUTTON LEFT or RIGHT as appropriate.

**TO JUMP FOR THE BALL,** press the A-BUTTON.

**ERRORS,** If you have selected an 'ERRORS ON' game at the Option screen, any dropped ball, that does not result in a *forced out* to a baserunner, will be charged, officially, as an 'error' to the fielding team.

# THROWING

**TO THROW THE BALL TO FIRST BASE,** once it is fielded, press the A-BUTTON.

**TO THROW THE BALL TO SECOND, THIRD, or HOME** once it is fielded, press the A-BUTTON and the D-BUTTON UP, LEFT, or DOWN as appropriate for the base you want to throw it to.

**Note:** You can change the D-BUTTON control perspective at the OPTION SCREEN by choosing CONTROLS.

**TO THROW THE BALL TO THE CUTOFF MAN,** once it is fielded, press the B-BUTTON and the D-BUTTON DOWN.

**NOTE:** Throwing from right field, the cutoff man is the second baseman. Throwing from left field, the cutoff man is the shortstop.

# TAGGING

**TO RUN WITH THE BALL** - either to tag a base or a runner - press the D-BUTTON LEFT, RIGHT, UP, or DOWN as appropriate for the direction you want to move. To move diagonally, press in-between LEFT, RIGHT, UP or DOWN.



# INFIELD FLY RULE

An INFIELD FLY is a fair ball (not including a line drive nor an attempted bunt) which can be caught by an infielder with ordinary effort, when first and second, or first, second and third bases are occupied, before there are two outs.

When it seems apparent that a batted ball will be an Infield Fly, the umpire will immediately declare "INFIELD FLY" to the screen, *for the benefit of the baserunners*. The ball is alive and the runners may advance at the risk of the ball being caught, or retouch their base and advance after the ball has been touched, the same as any fair ball.

# MANAGERS CLIP BOARD-FIELDING



The Manager's Clip Board Screen can be called up whether you are in the field or up at bat. Its options differ depending on the situation.

To relieve your pitcher, get some advice from the "Rocket," or take a time out and pause the game, press the START BUTTON while your team is in the field.

To scroll through the options, press the D-BUTTON UP or DOWN.

To reach the options, press the A-BUTTON.

**RELIEF PITCHER** - Shows your team's pitching roster. To scroll through the relief pitchers, press the D-BUTTON UP or DOWN.

To end the time out and return to the game without making a pitching change, press the B-BUTTON.

To change your pitcher and end the time out, move the cursor to the desired relief pitcher and press the A-BUTTON.

**ROCKET TALK** - Strategic advice from Roger Clemens. To end the time out and return to the game, press the A, B or C BUTTONS.

**EXIT** - Ends the time out and returns you to the game.

# BATTING CONTROLS

**TO POSITION THE BATTER**, press the D-BUTTON LEFT, RIGHT, UP or DOWN.

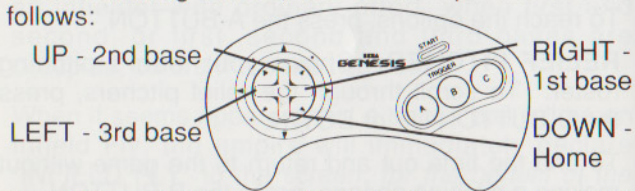
**TO SWING**, press the A-BUTTON.

**TO BUNT**, press the C-BUTTON.



# BASE RUNNING

When running bases, the control points are as follows:



**To RUN or STEAL, or EXTEND YOUR LEAD AT A BASE,** press the B-BUTTON and the D-BUTTON as appropriate for the base you wish to advance to.

**To RETURN TO A BASE,** press the C-BUTTON and D-BUTTON DOWN.

**To SHORTEN A LEAD AT A BASE,** press the B-BUTTON.

**To MAKE TWO or MORE BASE RUNNERS RUN, STEAL, or EXTEND LEAD AT THEIR BASES,** with base runners on first and second, you may advance both men simultaneously by pressing the B-BUTTON and the D-BUTTON LEFT. Otherwise, press the B-BUTTON and the D-BUTTON (in between the appropriate bases they wish to advance to.)

**To STOP BETWEEN BASES,** press the A-BUTTON and the D-BUTTON DOWN. **NOTE: Regardless of the fielder's point of view, the radar screen always displays the position of the base runners from the "behind home plate" perspective.**

# MANAGERS CLIP BOARD-BATting

To put in a pinch hitter, get advice from Roger Clemens, or take a time out, press the START BUTTON while your team is up at bat.

To scroll through the options, press the D-BUTTON UP or DOWN.

To choose the option, press the A-BUTTON.

**PINCH HITTER** - Press the D-BUTTON UP or DOWN to select the pinch hitter and then press the A-BUTTON to end the time out and return to the game.

**NOTE: Switch hitters default to the opposite hand of the pitcher. This means that a switch hitter will always bat lefty against a right handed pitcher and righty against a left handed pitcher.**

**ROCKET TALK** - Strategic batting advice from Roger Clemens. To end the time out and return to the game, press the A, B or C-BUTTON.

**EXIT** - Ends the time out and returns you to the game.



## CLOSE PLAYS AT THE BASE

When a close play occurs at any of the bases, the perspective switches to a close-up view of the baseman and the runner sliding in. The D-BUTTON functions also change depending upon whether you are the baseman or the runner.

**BASEMAN** - To tag the runner, you must judge which way and when he will slide. Press the D-BUTTON to "slap on the tag" in the direction you think he will slide.

LEFT - left side of the base  
RIGHT - right side of the base  
DOWN - center of the base

**BASE RUNNER** - To avoid being tagged, you must determine which way the fielder is going to go and slide "around" his tag.

LEFT - slide to the inside of the base  
RIGHT - slide to the outside of the base  
DO NOTHING - and you will automatically slide to the center of the base.

## PLAY BALL!

From a single head-to-head game to a full season's play, get set for all the excitement, action, and in-the-field views of real baseball!

Your team has the drive and the talent to go all the way! All you have to do is shut down the division's big hitters, get to their pitchers early, and pile up some runs. Hey, nobody said it was going to be easy!

The "Star Spangled Banner" is over. Pitcher's ready. Ump's at the plate...PLAY BALL!





**FLYING EDGE (A Division of Acclaim Entertainment, Inc.) LIMITED WARRANTY**

Flying Edge warrants to the original purchaser only of this Flying Edge software product that the medium on which this computer program is recorded is free from defects in materials and workmanship for a period of ninety (90) days from the date of purchase. This Flying Edge software program is sold "as is," without express or implied warranty of any kind, and Flying Edge is not liable for any losses or damages of any kind resulting from use of this program. Flying Edge agrees for a period of ninety (90) days to either repair or replace, at its option, free of charge, any Flying Edge software product, postage paid with proof of date of purchase, at its Factory Service Center. Replacement of the cartridge, free of charge to the original purchaser (except for the cost of returning the cartridge) is full extent of our liability.

This warranty is not applicable to normal wear and tear. This warranty shall not be applicable and shall be void if defect in the Flying Edge software product has arisen through abuse, unreasonable use, mistreatment or neglect. THIS WARRANTY IS IN LIEU OF ALL OTHER WARRANTIES AND NO OTHER REPRESENTATIONS OR CLAIMS OF ANY NATURE SHALL BE BINDING ON OR OBLIGATE FLYING EDGE. ANY IMPLIED WARRANTIES APPLICABLE TO THIS SOFTWARE PRODUCT INCLUDING WARRANTIES OF MERCHANTABILITY AND FITNESS FOR A PARTICULAR PURPOSE, ARE LIMITED TO THE NINETY (90) DAY PERIOD DESCRIBED ABOVE. IN NO EVENT WILL FLYING EDGE BE LIABLE FOR ANY SPECIAL INCIDENTAL OR CONSEQUENTIAL DAMAGES RESULTING FROM POSSESSION, USE OR MALFUNCTION OF THIS FLYING EDGE SOFTWARE PRODUCT.

Some states do not allow limitations as to how long an implied warranty lasts and/or exclusions or limitations of incidental or consequential damages so the above limitations and/or exclusions of liability may not apply to you. This warranty gives you specific rights, and you may also have other rights which vary from state to state.

This warranty shall not be applicable to the extent that any provision of this warranty is prohibited by any federal, state or municipal law which cannot be pre-empted.

**RETURNS AFTER WARRANTY** - To replace defective media after the ninety (90) day warranty period has expired, send the original cartridge to Flying Edge at the address below via UPS or registered mail. Enclose a statement of the defect, your name, your return address and a check or money order for \$20.00.

Flying Edge, Consumer Service Dept., 71 Audrey Avenue, Oyster Bay, NY 11771

**COMPLIANCE WITH FCC REGULATIONS**

This equipment generates and uses radio frequency energy and if not installed and used properly, that is, in strict accordance with the manufacturer's instructions, may cause interference to radio and television reception. It has been type tested and found to comply with the limits for a Class B computing device in accordance with the specifications in Subpart J of Part 15 of FCC Rules which are designed to provide reasonable protection against such interference in a residential installation. However, there is no guarantee that interference will not occur in a particular installation. If this equipment does cause interference to radio or television reception, which can be determined by turning the equipment off and on, the user is encouraged to try and correct the interference by one or more of the following measures:

- Reorient the receiving antenna
- Relocate the Genesis with respect to the receiver
- Move the Genesis away from the receiver
- Plug the Genesis into a different outlet so that the computer and receiver are on different circuits

If necessary, the user should consult an experienced radio/television technician for additional suggestions. The user may find the following booklet prepared by the Federal Communications Commission helpful: How to Identify and Resolve Radio/TV Interference Problems. This booklet is available from the U.S. Government Printing Office, Washington, DC 20402. Stock No. 004-000-00345-4

**Flying Edge Hotline (516) 624-9300**

Distributed and marketed by Acclaim Entertainment, Inc.,  
71 Audrey Avenue, Oyster Bay, N.Y. 11771.

Roger Clemens' MVP Baseball™ is a trademark of L.J.N. Ltd. © 1992 L.J.N. Ltd. All rights reserved. Sega and Genesis are trademarks of Sega Enterprises Ltd. Flying Edge™ is a trademark of Acclaim Entertainment, Inc. © 1992 Acclaim Entertainment, Inc. All rights reserved.

**FLYING EDGE™ GAME PAK WARRANTY REGISTRATION CARD**

*Fill out and mail this coupon to receive a FREE copy of the "Masters of the Game" magazine with information and tips on our hot new titles and products!*

Name: \_\_\_\_\_

Phone: ( ) \_\_\_\_\_ Date: \_\_\_\_\_

Street Address: \_\_\_\_\_

City, State, Zip: \_\_\_\_\_

1. Game title: Roger Clemens' MVP Baseball™ GENESIS

2. Who purchased this game?  Male  Female Age \_\_\_\_\_

3. Who plays this game the most?  Male  Female Age \_\_\_\_\_

4. Why was game purchased for player?  
 Self-purchase  Requested gift  Unrequested gift

5. How did you hear about this game?  
 Friend  Radio  TV  Newspaper  Magazine Ad  
 Game Review  In-Store Display  
 Played Before Buying  Arcade  Salesperson

6. How would you rate the game play?  
1 2 3 4 5 6 7 8 9 10 (Best)

7. How would you rate the graphics?  
1 2 3 4 5 6 7 8 9 10 (Best)

8. Which kind of game do you like the most?  
 Action  Role Playing  Sports  
 Simulation  Maze/Puzzle

9. How often do you play coin-op arcade games?  
 Never  Sometimes  Frequently

10. What game/computer systems are in your household?  
 NES  Super NES  Genesis  Game Gear  
 Game Boy  PC (IBM or other)

11. How many times a month do you rent video games? \_\_\_\_\_

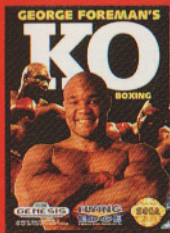
12. Which magazines and comic books do you read?  
\_\_\_\_\_  
\_\_\_\_\_

13. Comments: \_\_\_\_\_  
\_\_\_\_\_  
\_\_\_\_\_

Send to: Flying Edge  
P.O. Box 9003  
Oyster Bay, NY 11771-9003

Cut along dotted line and send to Flying Edge





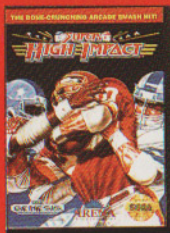
## GEORGE FOREMAN'S KO BOXING™

You're "Big George" Foreman with an appetite that only KO BOXING can satisfy!!



Get ready to RUMBLE with devastating power punches!

**FLYING  
EDGE™**  
A Division of Acclaim Entertainment, Inc.



## SUPER HIGH IMPACT™

When you're tired of watching football from the sidelines...get into the **button-pounding arcade action** of SUPER HIGH IMPACT!!



Bone crunching football action straight from the arcade **SMASH!!**

**ARENA  
ENTERTAINMENT™**



## NBA® ALL-STAR CHALLENGE™

Downtown or in the paint, take on 27 of the NBA's hottest stars in slammin', jammin' One-on-One competition!



Take it to the hoop with One-on-One, H.O.R.S.E., 3 Point Shoot Out, *and more!*

**FLYING  
EDGE™**  
A Division of Acclaim Entertainment, Inc.

Super High Impact™ © 1991, 1992 Midway® Manufacturing Company. All NBA and Team Insignias depicted are the properties of the respective NBA Teams and NBA Properties, Inc. and may not be reproduced without written consent of NBA Properties, Inc. All-Star Challenge™ is a trademark of L.J.N. Ltd. © 1992 L.J.N. Ltd. All rights reserved. Arena™ is a trademark of Arena Entertainment. © 1992 Arena Entertainment. All rights reserved. Sega and Genesis are trademarks of Sega Enterprises Ltd. George Foreman's KO Boxing™ & Flying Edge™ are trademarks of Acclaim Entertainment, Inc. © 1992 Acclaim Entertainment, Inc. All rights reserved.

Flying Edge A Division of Acclaim Entertainment, 71 Audrey Avenue, Oyster Bay, N.Y. 11771

Licensed by Sega Enterprises Ltd. for play on the Sega™ Genesis™ System. Sega and Genesis are trademarks of Sega Enterprises Ltd. Printed in Japan.