



Video:



PHOTOS: Click the link below to view all high resolution images

[https://app.aspenfieldservices.com/api/attachments/get/7riYrbPrpZ5XYuk4m/full\\_report\\_0071462\\_7riYrbPrpZ5XYuk4m.pdf?view](https://app.aspenfieldservices.com/api/attachments/get/7riYrbPrpZ5XYuk4m/full_report_0071462_7riYrbPrpZ5XYuk4m.pdf?view)

NOTE: By clicking above, you will be redirected to Aspen Field Services.

Inspection Details	
Year	2007
Make	Bobcat
Model	S130
Date of Inspection	05/15/2024
Location of Inspection	15151 Airline Hwy, Baton Rouge, LA, 70817
VIN/Serial Number	529217179
Cylinders	See Notes
Engine Hours	2,865
EMS Warning Lights	No Active Warnings
Travel Control	See Notes
Operator's Seat	See Notes
Mirrors	N/A
Radio	No
A/C	No
Steering Wheel	N/A



Inspection Details Cont'd	
Pedals	No Damages Observed
Floorboard	See Notes
Power Mirrors	No
Heated Mirrors	No
Switches and Controls	See Notes
Steps	No Damages Observed
Handrails	No Damages Observed
Oil Dipstick	High Level / Dark Color
Engine Compartment	No Damages Observed
Exhaust	Single - No Damages Observed
Axles	No Damages Observed
Deluxe Instrumentation	No
Backup Camera	No
ROPS	No Damages Observed
Front Lights	No Damages Observed
Rear Lights	No Damages Observed
Front Left Tire Condition	See Notes
Front Left Tire Brand	Loadmax
Front Left Tire Size	10-16.5
Front Left Tire Tread Depth Measurement	2/32"
Rear Left Tire Condition	See Notes
Rear Left Tire Brand	Loadmax
Rear Left Tire Size	10-16.5
Rear Left Tire Tread Depth Measurement	2/32"
Front Right Tire Condition	See Notes
Front Right Tire Brand	Loadmax
Front Right Tire Size	10-16.5
Front Right Tire Tread Depth Measurement	4/32"
Rear Right Tire Condition	See Notes
Rear Right Tire Brand	Loadmax
Rear Right Tire Size	10-16.5
Rear Right Tire Tread Depth Measurement	5/32"
Attachments - Bucket	See Notes
Cab Interior	See Notes
Comments	The horn is not operational. The front left and rear left wheels are missing lug bolts and nuts. The inside cab rails are rusty on both sides. The bottom seat base is rusty. The operator's manuals are missing. The operator's seat material is torn on the backrest. The material is coming off the wall behind the operator's seat. The lower rubber boots on the hand controls are torn. There are exposed wires crossing the center of the floorboard. The

Inspection Details Cont'd



cab entry lower metal is pitted and has some rust showing. The top window metal frame on the ceiling in the cab is rusty. There appears to be a switch missing on the front upper console. The front upper console plastic appears to be coming apart. The headliner is falling down in the cab. The right hand control rubber grip appears to be torn. The rooftop glass is scratched. The engine oil appears to be dark in color and above the full mark on the dipstick. The lift cylinders are leaking. The hydraulic metal lines on the boom arms are rusty. The auxiliary hydraulic fittings on the left boom arm are rusty. The front right of the cab is bent and dented by the work light. The rear door has paint worn off of it. The front left tire is cracking on the sidewall, and the treads are cut, gouged, and below 50%. The front left wheel has small dents in the lip. The rear left tire is cracking on the sidewall, and the treads are cut, gouged, and below 50%. The front right tire is cracking on the sidewall, and the treads are cut, gouged, and below 50%. The rear right tire is cracking on the sidewall, and the treads are cut, gouged, and below 50%. The rear right axle is oily, and the seal could possibly be leaking. The backup alarm is not operational. The bucket tilt pins sound like they need to be greased.

# Aspen Field Services



Front Left / 05-15-2024



Front Right / 05-15-2024

# Aspen Field Services



Rear Left / 05-15-2024



Rear Right / 05-15-2024

# Aspen Field Services



Left / 05-15-2024



Right / 05-15-2024

# Aspen Field Services

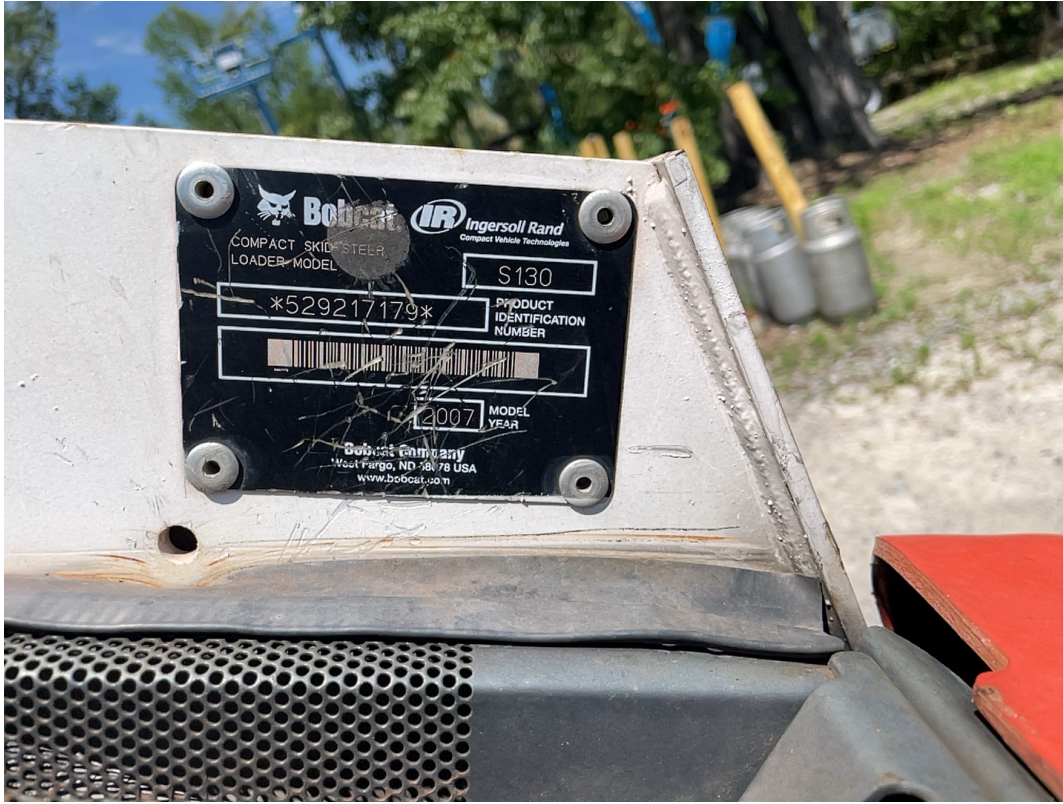


Front / 05-15-2024

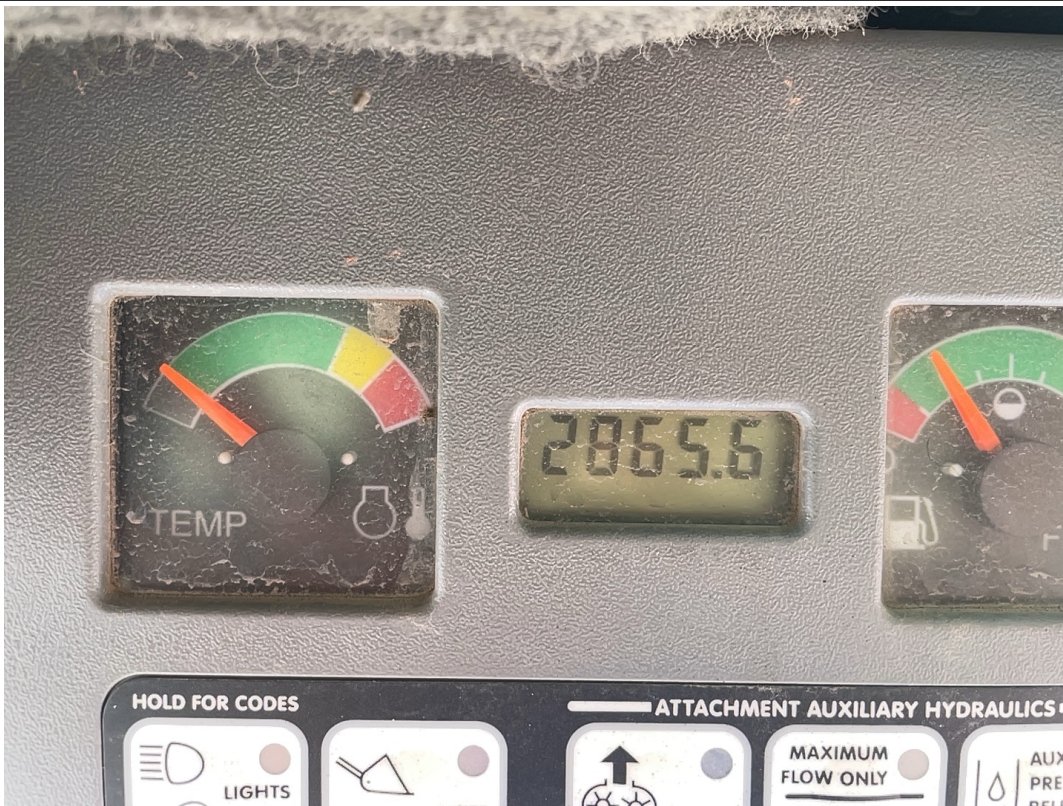


Rear / 05-15-2024

# Aspen Field Services



Serial Number: 529217179 / 05-15-2024



Engine Hours: 2,865 / 05-15-2024



# Aspen Field Services



EMS Warning Lights / 05-15-2024



EMS Warning Lights / 05-15-2024

# Aspen Field Services



Cab Interior / 05-15-2024



Operator's Seat / 05-15-2024

# Aspen Field Services



Floorboard / 05-15-2024



Pedals / 05-15-2024

# Aspen Field Services



Pedals / 05-15-2024



Switches and Controls / 05-15-2024

# Aspen Field Services



Switches and Controls / 05-15-2024



Switches and Controls / 05-15-2024

# Aspen Field Services



Switches and Controls / Travel Control / 05-15-2024



Switches and Controls / Travel Control / 05-15-2024

# Aspen Field Services



Switches and Controls / 05-15-2024



Steps / 05-15-2024

# Aspen Field Services



Engine Compartment / 05-15-2024



Exhaust Pipe / 05-15-2024



# Aspen Field Services



Oil Dipstick / 05-15-2024

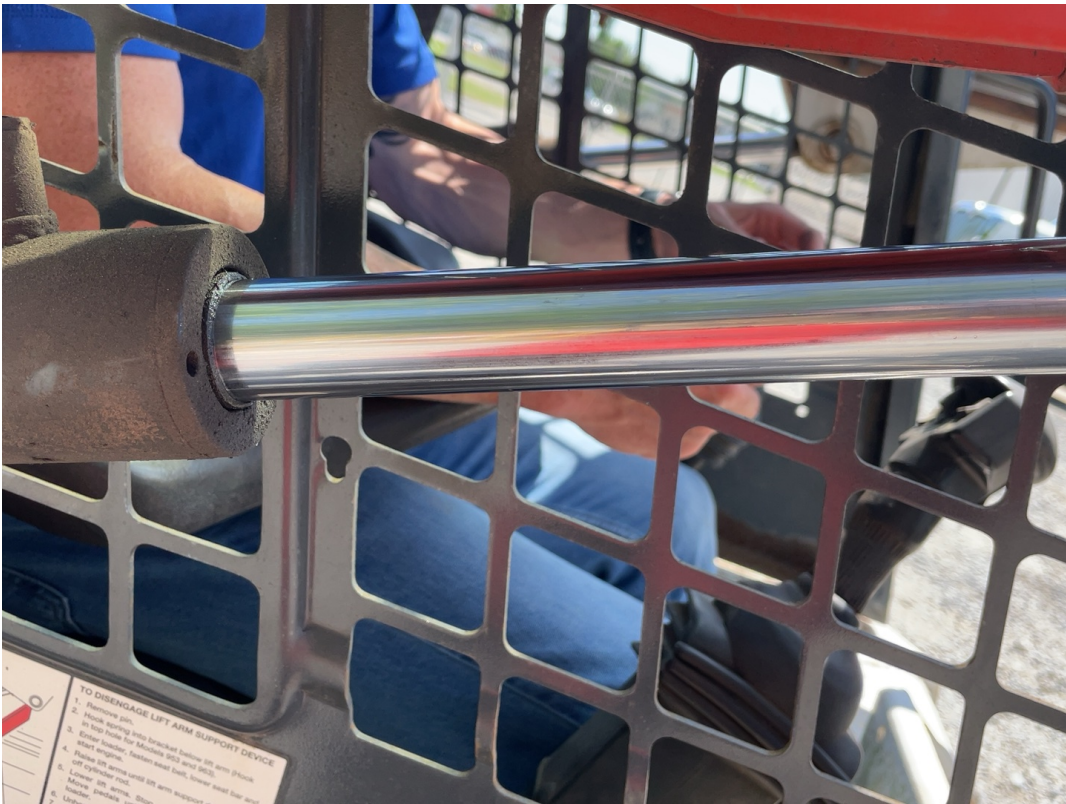


ROPS / Handrails / 05-15-2024

# Aspen Field Services



ROPS / Handrails / 05-15-2024



Cylinders / 05-15-2024

# Aspen Field Services



Cylinders / 05-15-2024



Cylinders / 05-15-2024

# Aspen Field Services



Attachments / 05-15-2024



Attachments / 05-15-2024

# Aspen Field Services



Attachments / 05-15-2024



Attachments / 05-15-2024

# Aspen Field Services



Attachments / 05-15-2024



Front Lights / 05-16-2024

# Aspen Field Services



Rear Lights / 05-16-2024



Front Left Tire Condition / 05-15-2024

# Aspen Field Services



Front Left Tire Condition / 05-15-2024



Front Left Tire Brand / 05-15-2024



# Aspen Field Services



Front Left Tire Size / 05-15-2024



Axles / 05-15-2024

# Aspen Field Services



Front Left Tire Tread Depth Measurement / 05-15-2024



Rear Left Tire Condition / 05-15-2024

# Aspen Field Services



Rear Left Tire Condition / 05-15-2024



Rear Left Tire Brand / 05-15-2024

# Aspen Field Services



Rear Left Tire Size / 05-15-2024



Axles / 05-15-2024

# Aspen Field Services



Rear Left Tire Tread Depth Measurement / 05-15-2024



Front Right Tire Condition / 05-15-2024

# Aspen Field Services



Front Right Tire Condition / 05-15-2024



Front Right Tire Brand / 05-15-2024

# Aspen Field Services



Front Right Tire Size / 05-15-2024



Axles / 05-15-2024

# Aspen Field Services



Front Right Tire Tread Depth Measurement / 05-15-2024



Rear Right Tire Condition / 05-15-2024



# Aspen Field Services



Rear Right Tire Condition / 05-15-2024



Rear Right Tire Brand / 05-15-2024

# Aspen Field Services



Rear Right Tire Size / 05-15-2024



Axles / 05-15-2024

# Aspen Field Services



Rear Right Tire Tread Depth Measurement / 05-15-2024