



Video:



PHOTOS: Click the link below to view all high resolution images

https://app.aspenfieldservices.com/api/attachments/get/hAyrR8SLLGieEwsXs/full_report_0070940_hAyrR8SLLGieEwsXs.pdf?view

NOTE: By clicking above, you will be redirected to Aspen Field Services.

Inspection Details	
Year	2015
Make	Bobcat
Model	T770
Date of Inspection	04/26/2024
Location of Inspection	700 E Temperance St, Ellettsville, IN, 47429
Serial Number	A3P814504
Cylinders	See Notes
Engine Hours	2,589
EMS Warning Lights	Active Warnings
Travel Control	No Damages Observed
Operator's Seat	No Damages Observed
Mirrors	N/A
Radio	Yes - See Notes
A/C	Yes
Steering Wheel	N/A



Inspection Details Cont'd	
Pedals	No Damages Observed
Floorboard	No Damages Observed
Power Mirrors	No
Heated Mirrors	No
Switches and Controls	See Notes
Steps	See Notes
Handrails	No Damages Observed
Oil Dipstick	Good Level / Dark Color
Engine Compartment	See Notes
Exhaust	Single Stack - See Notes
Axles	N/A
Deluxe Instrumentation	No
Backup Camera	No
ROPS	No Damages Observed
Front Lights	See Notes
Rear Lights	See Notes
Left Track Condition	See Notes
Left Track Brand	Bridgestone
Left Track Size	6678749
Left Track Tread Depth Measurement	26/32"
Right Track Condition	See Notes
Right Track Brand	Bridgestone
Right Track Size	6678749
Right Track Tread Depth Measurement	1"
Attachments - Bucket	See Notes
Comments	Unit runs and drives. The site confirmed that the horn does not work. The bucket cutting edge is missing, and the bucket is worn down to the bolt holes. Additionally, the edge of the bucket appears to be bent and cracked on the lip. The rear door has paint damage. The radio antenna is missing on the rear of the cab. The left track appears to be loose. The light housing over the left light is dented. The bucket step is bent. The front lower platform below the entry door is rusty. The front door is missing the wiper arm and blade. The entry step is bent to the right and missing bolts. The dash is displaying a low fuel warning at the time of inspection. The door shock is missing for the front door. The traction tape is worn off at the entry of the cab. The front door latch cover is missing. The park brake rocker switch light lens is broken out of the switch. The

Inspection Details Cont'd



exhaust tip is bent on the bottom of the outlet. The engine oil is dark in color. The rear door latch could possibly not be operational; the rear door appears to be held shut using a hitch pin and hairpin. The backup on the rear door is missing a bolt that attaches the alarm to the door. The decals on the rear door are peeling off. Both of the lift cylinders appear to be oily at the head of the cylinder and possibly leaking. The pins on the ends of the tilt cylinders and coupler housing are worn; there is a gap between the pin and the coupler housing. The bob tach cylinder appears to be oily and possibly leaking. Sprockets are showing wear. The right track has cuts in the rubber and the lugs. The left track has some small cuts in the rubber lugs. The backup alarm is not operational. The rear work lights and tail lights are not operational. The front left arm auxiliary hydraulic fittings appear to have been leaking, leaving an oil stain on the lift arm. The rear outside part of the left and right lift arms have paint scratches, and the metal is showing rust.

Aspen Field Services



Front Left / ROPS / 04-26-2024



Front Right / ROPS / 04-26-2024

Aspen Field Services



Rear Left / 04-26-2024



Rear Right / 04-26-2024

Aspen Field Services



Left / ROPS / 04-26-2024



Right / ROPS / 04-26-2024

Aspen Field Services

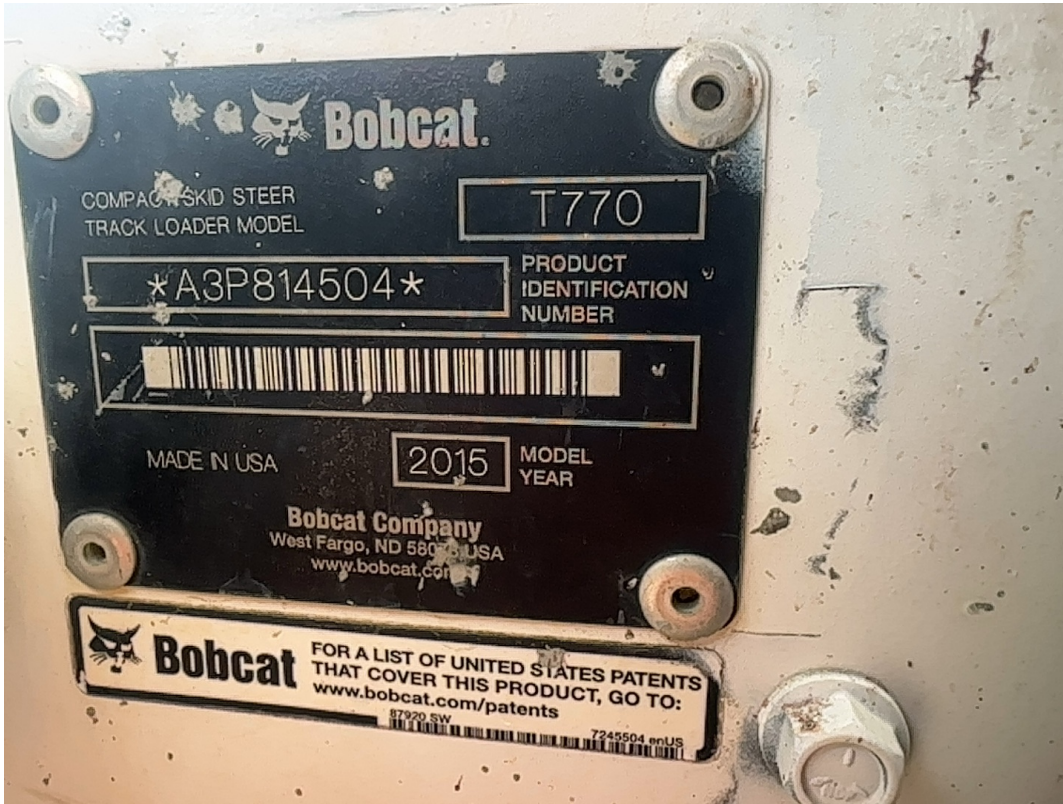


Front / ROPS / 04-26-2024



Rear / Rear Lights / ROPS / 04-26-2024

Aspen Field Services



Serial Number: A3P814504 / 04-26-2024



EMS Warning Lights / 04-26-2024

Aspen Field Services



EMS Warning Lights / 04-26-2024



Engine Hours: 2,589 / 04-26-2024

Aspen Field Services



Cab Interior / Operator's Seat / 04-26-2024



Steps / 04-26-2024

Aspen Field Services



Steps / 04-26-2024



Switches and Controls / Travel Control / Floorboard / Pedals / 04-26-2024

Aspen Field Services



Switches and Controls / Travel Control / 04-26-2024



Switches and Controls / A/C / 04-26-2024

Aspen Field Services



Switches and Controls / Radio / 04-26-2024



Switches and Controls / 04-26-2024

Aspen Field Services



Switches and Controls / 04-26-2024



Switches and Controls / 04-26-2024

Aspen Field Services



Switches and Controls / 04-26-2024



Handrails / 04-26-2024

Aspen Field Services



Handrails / 04-26-2024



Front Lights / 04-26-2024

Aspen Field Services

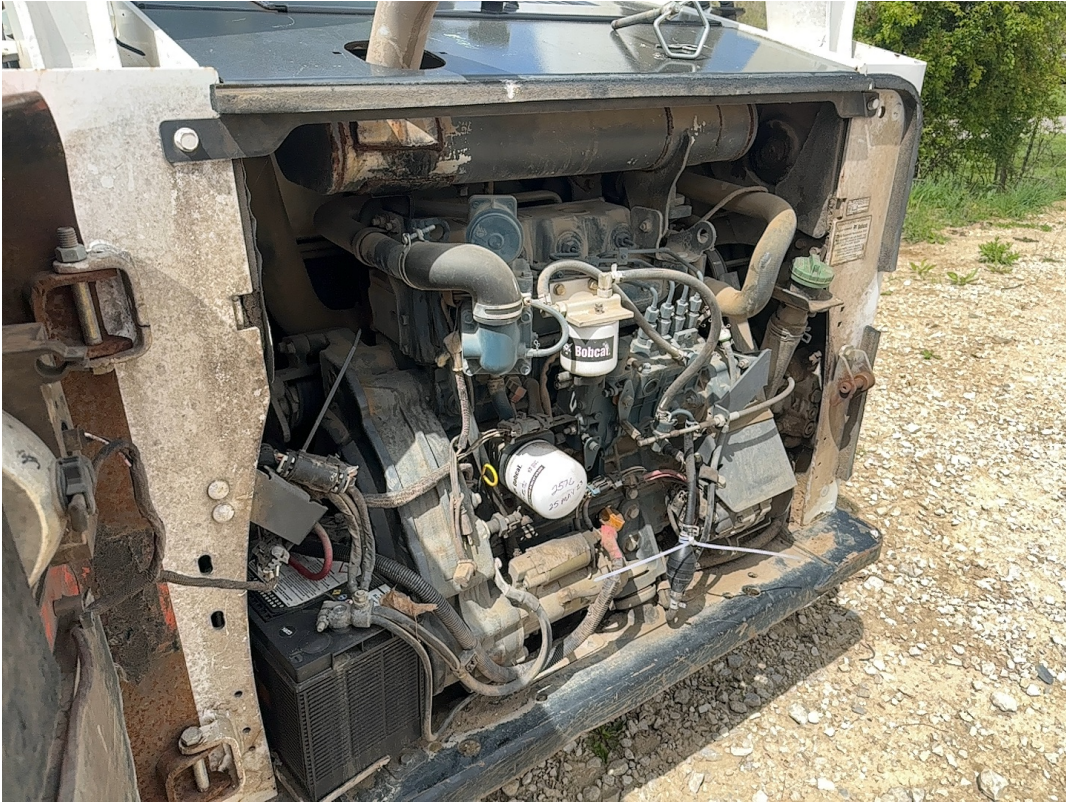


Exhaust Pipe / 04-26-2024



Engine Compartment / 04-26-2024

Aspen Field Services



Engine Compartment / 04-26-2024



Oil Dipstick / 04-26-2024

Aspen Field Services



Cylinders / 04-26-2024



Cylinders / 04-26-2024

Aspen Field Services



Cylinders / 04-26-2024



Cylinders / 04-30-2024

Aspen Field Services



Cylinders / 04-26-2024



Cylinders / 04-26-2024

Aspen Field Services



Attachements / 04-26-2024



Attachements / 04-26-2024

Aspen Field Services



Attachements / 04-26-2024



Right Track Condition / 04-26-2024

Aspen Field Services



Right Track Condition / 04-26-2024



Right Track Condition / 04-26-2024

Aspen Field Services



Right Track Condition / 04-26-2024



Right Track Condition / 04-26-2024

Aspen Field Services



Right Track Condition / 04-26-2024



Right Track Brand / Right Track Size / 04-26-2024

Aspen Field Services



Right Track Tread Depth Measurement / 04-26-2024



Left Track Condition / 04-26-2024

Aspen Field Services



Left Track Condition / 04-26-2024



Left Track Condition / 04-26-2024

Aspen Field Services



Left Track Condition / 04-26-2024



Left Track Condition / 04-26-2024

Aspen Field Services



Left Track Brand / Left Track Size / 04-30-2024



Left Track Tread Depth Measurement / 04-30-2024