

Three female tennis players are shown in action against a background of radiating lines. The player on the left is wearing a grey t-shirt with 'FSU' and a white visor, celebrating with her arms raised. The player in the center is wearing a maroon t-shirt and a black visor, looking intensely at the camera with her fist clenched. The player on the right is wearing a black long-sleeved shirt with 'FSU' and is reaching up to catch a yellow tennis ball.

# FLORIDA STATE TENNIS



**2016  
WOMEN'S TENNIS  
MEDIA GUIDE**





2015-16 FLORIDA STATE  
WOMEN'S TENNIS

2015-16 FLORIDA STATE  
WOMEN'S TENNIS

Program Information

Table of Contents.....1

This is FSU Tennis.....2

Facilities - Scott Speicher Tennis Center .....4

Facilities - Indoor Tennis Facility.....5

University and Athletic Administration.....6

Quick Facts.....7

2016 Team

Roster .....8

Daneika Borthwick .....9

Yukako Noi.....10

Daniela Schippers.....11

Gabriella Castaneda.....12

Kathryn Phillips/Lana Rush.....13

Julia Mikulski/Ariana Rahmanparast.....14

Head Coach Jennifer Hyde.....15

Assistant Coach Zsuzsanna Fodor.....17

Vol. Coach Giorgia Pozzan/Director of Ops. Tami Brown.....18

Support Staff.....19

2014-15 Team

Match-by-Match Results.....20

Statistics.....24

Program Information

All-Time vs. Opponent.....25

All-Time Match-by-Match Results.....26

Postseason History.....32

School Records .....34

Awards & Honors.....35

Media Information.....37

CREDITS

The 2015-16 Florida State Women's Tennis Guide is a publication of the FSU Sports Information Office. Written and edited by Steven McCartney with assistance from Aaron Brecheisen. Cover page is designed by Peter Mamatey. Page layout by Steven McCartney. Featured photographers: Manuela Davies, Perrone Ford, Bill Kallenberg, Ryals Lee, Steve Musco, Maury Neipris, Ross Obley, and Mike Olivella.













With the first stage of construction completed in the summer of 1993, the Donald Loucks Courts at the Scott Speicher Tennis Center opened its gates to the public for the first time at a Children's Miracle Network charity tournament. Since then, many successful tournaments including the 1996 NCAA Women's Championships and 2007-2010 NCAA Regionals have graced the courts at one of Florida State University's premier athletic facilities.

Costing \$1.2 million to build and then another \$800,000 for recent additions, Florida State's Speicher Tennis Center has become an example of the increasing dedication and commitment the University has to all of its 20 varsity athletic programs.

The Speicher Tennis Center houses 12 lighted hard courts, over 1,000 court level seats, coaching offices, men's and women's locker rooms, equipment and storage rooms, a team lounge and a public address system. In 2015, the complex added booster seating over Courts 1 & 2 with new black awnings to cover spectators. Underneath the grandstands, a new paint job and signage welcomes players and fans to the complex. The growing pride Florida State has for its tennis program and its premier tennis center was honored just after its opening in 1993, when the United States Tennis Association (USTA) awarded the structure with its "Top Notch" facility award.

In 2016, the courts were repainted in Florida State's patented Garnet and Gold, the first major renovations to the courts since they opened in 1993.

The Speicher Tennis Center was named in honor of Lieutenant Commander Michael Scott Speicher, a graduate of Florida State University. Speicher was considered the first American casualty during Operation Desert Storm, but was later reclassified by the U.S. government as missing in action in 2001 and missing or captured a year later. However, in 2009 Speicher's remains were found in the Anbar province of Iraq after a nearly 20-year search. The Scott Speicher family was later honored by Florida State at a home football game with a missing man formation flyover from the Navy. By Presidential directive, the facility bears the name the "Scott Speicher Tennis Center."

In 1947, Loucks became Florida State's first basketball coach and a year later was named the school's first tennis coach. The varsity tennis courts were named for Loucks in 1981. He served as Dean of Men from 1957-1967 and was known as a servant of leadership, service and devotion to many worthy causes.

The Speicher Tennis Center was designed by EMO/Architects, Inc., a Tallahassee-based architectural firm, in collaboration with Global Consult Group, Inc., an internationally recognized Tennis Facility Design Consultant. The complex was funded by private sources and supervised through the state university system of Florida.

Through its 22 year existence, the Donald Loucks Courts at the Scott Speicher Tennis Center has served as the home courts for all Florida State men's and women's home dual matches, Seminole Fall Classics, City of Tallahassee tennis championships, various USTA regional and zonal tournaments, the 1994 and 1995 Men's Intercollegiate tournament and the annual Children's Miracle Network Charity Invitational benefiting Shands Hospital in Gainesville.







After breaking ground on construction in January of 2010, the Indoor Tennis Facility was completed in April of 2011. The multimillion dollar Indoor Tennis Facility serves as an additional playing arena for the Florida State tennis teams. Since the completion in spring of 2011, the facility has served as both a site for training and competition.

The building hosts six regulation courts, locker rooms, athletic training room, equipment room, office and lobby. With this newest facility, both Seminole Tennis teams are equipped with the tools to host both regional and national championships now and in the future. For the next phase, plans are in place to add spectator seating, team lounges, extended locker rooms, offices and a press box.

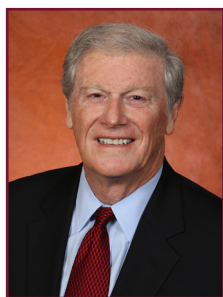
Besides use from the tennis programs, the Multi-Purpose Educational Facility is used for academic classes, clinics and camps. The facility was the first indoor tennis facility approved for college competition in the state of Florida and is still one of just a few in the southeast.

The women's tennis team had its first practice on April 6, 2011 while the men practiced the next day on April 7. At the men's Seminole Invitational during September 2011, the back draws were played there for the facilities first competition. The first women's dual match was played on January 21, 2012 against UCF where Florida State won 6-1. The men's team played Furman on January 22, 2012 and came off the courts with a 7-0 victory.

The building was designed by Architects: Lewis + Whitlock while construction was completed by Rippee Construction of Tallahassee.







**JOHN THRASHER**  
PRESIDENT



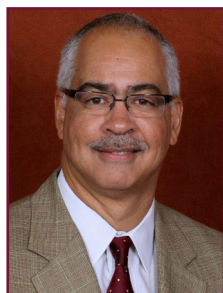
**STAN WILCOX**  
ATHLETICS DIRECTOR



**PAMELA L. PERREWÉ**  
FACULTY ATHLETICS REPRESENTATIVE



**CINDY HARTMANN**  
DEPUTY ATHLETICS DIRECTOR  
FOR ADMINISTRATION



**KARL HICKS**  
DEPUTY ATHLETICS DIRECTOR  
FOR EXTERNAL OPERATIONS



**VANESSA FUCHS**  
SENIOR ASSOCIATE ATHLETICS  
DIRECTOR/SWA



**MONK BONASORTE**  
SENIOR ASSOCIATE ATHLETICS  
DIRECTOR



**DR. GREG BEAUMONT**  
SENIOR ASSOCIATE  
ATHLETICS DIRECTOR/  
ASSOCIATE DEAN



**MATT BEHNKE**  
SENIOR ASSOCIATE  
ATHLETICS DIRECTOR/CFO



**JIM CURRY**  
ASSOCIATE ATHLETICS DIRECTOR  
FOR COMPLIANCE/TENNIS  
OVERSIGHT

## 2015-16 FLORIDA STATE BOARD OF TRUSTEES



**Edward E. "Ed"  
Burr, Chair**



**Leslie "Les"  
Pantin, Vice Chair**



**Kathryn Ballard**



**Allan Bense**



**William "Billy"  
Buzzett**



**Emily Fleming  
"June" Duda**



**Susan Fiorito**



**Joseph "Joe"  
Gruters**



**Mark Hillis**



**Craig Mateer**



**Bob Sasser**



**Brent W.  
Sembler**



**Jean Tabares**





### University Information

Location .....Tallahassee, Fla.  
 Founded .....1851  
 Nickname.....Seminoles  
 Colors .....Garnet and Gold  
 Enrollment.....41,773  
 Conference.....Atlantic Coast  
 Affiliation .....NCAA Division I  
 President.....John Thrasher  
 Athletics Director.....Stan Wilcox  
 Alma Mater.....Notre Dame, '81  
 Sport Oversight.....Jim Curry

### SID Information

Assistant AD/SID.....Elliott Finebloom  
 Women's Tennis SID.....Steven McCartney  
 Phone Number.....(850) 322-6711  
 Email.....smccartney@fsu.edu  
 Athletics Website.....www.seminoles.com  
 Twitter.....@FSU\_WTennis  
 Facebook.....www.facebook.com/FSU.WTennis  
 Conference Tennis SID.....Sarah Maher

### Women's Tennis Information

Head Coach.....Jennifer Hyde  
 Alma Mater.....Florida State, '95  
 FSU Record.....165-114 (.591)/11 seasons  
 Career Record.....220-177 (.554)/16 seasons  
 Assistant Coach.....Zsuzsanna Fodor/3rd season  
 Alma Mater.....Cal, '07  
 Volunteer Assistant Coach.....Giorgia Pozzan/2nd season  
 Alma Mater.....Houston, '12  
 Director of Tennis Operations.....Tami Brown

### Facilities

Outdoor Courts.....Scott Speicher Tennis Center  
 Capacity.....1,000  
 Address.....121 Chieftain Way  
 Tallahassee, FL 32306  
 Indoor Courts.....Indoor Tennis Facility  
 Address.....2566 Pottsdamer Rd.  
 Tallahassee, FL 32316

### Program History

First Year of Program.....1983  
 All-Time NCAA Record.....493-368 (.573)  
 NCAA Tournament Appearances.....18  
 NCAA Tournament Record.....9-18  
 ACC Tournament Record.....32-24

### Team Information

2015 Overall Record.....16-11  
 2015 Conference Record/Finish.....6-8/10th  
 2015 ACC Tournament.....Semifinals

Beat Pittsburgh, 4-0  
 Beat Notre Dame, 4-3  
 Beat Miami, 4-3  
 Lost to Georgia Tech, 4-3

Final ITA Ranking.....39  
 Letterwinners Returning/Lost.....6/3  
 Newcomers.....2

### 2015 Fall Schedule

September 25-26	Furman Fall Classic	Greenville, S.C.
October 3-8	ITA All-American Championships	Malibu, Calif.
October 16-17	Bedford Cup	Fort Myers, Fla.
October 22-24	ITA Southeast Regionals	Athens, Ga.
November 5-8	USTA Clay Court Invitational	Orlando, Fla.

### 2016 Spring Schedule

January 16	Old Dominion	Norfolk, Va.
January 18	Tulane	New Orleans, La.
January 22	Mississippi State <sup>1</sup>	Durham, N.C.
January 23	Portland <sup>1</sup>	Durham, N.C.
January 30	South Carolina State	Jacksonville, Fla.
January 30	North Florida	Jacksonville, Fla.
February 4	Florida	Tallahassee, Fla.
February 20	Navy <sup>2</sup>	Tallahassee, Fla.
February 20	Florida AGM <sup>3</sup>	Tallahassee, Fla.
February 26	Duke*	Durham, N.C.
February 28	North Carolina*	Chapel Hill, N.C.
March 2	Miami*	Tallahassee, Fla.
March 12	Clemson*	Clemson, S.C.
March 12	Wofford	Spartanburg, S.C.
March 18	Georgia Tech*	Tallahassee, Fla.
March 20	Virginia Tech*	Tallahassee, Fla.
March 25	Boston College*	Tallahassee, Fla.
March 27	Virginia*	Tallahassee, Fla.
March 27	Troy	Tallahassee, Fla.
April 1	Notre Dame*	South Bend, Ind.
April 3	Syracuse*	Syracuse, N.Y.
April 8	NC State*	Raleigh, N.C.
April 10	Wake Forest*	Winston-Salem, N.C.
April 15	Louisville*	Tallahassee, Fla.
April 17	Pittsburgh* <sup>3</sup>	Tallahassee, Fla.

April 20-24	ACC Championships	Cary, N.C.
May 13-15	NCAA Championships	Campus Sites
May 19-31	NCAA Championships Final 16	Tulsa, Okla.

<sup>1</sup>ITA Kick-Off Weekend; <sup>2</sup>Military Appreciation; <sup>3</sup>Senior Day; \*ACC Match

### Final 2015 ACC Standings

	ACC	Overall	Final Nat'l Rank
North Carolina	14-0	29-1	4
Miami	12-2	18-6	15
Virginia	11-3	23-6	9
Duke	11-3	17-10	19
Clemson	10-4	18-10	18
Georgia Tech	9-5	17-10	20
Notre Dame	8-6	14-11	36
Virginia Tech	7-7	16-9	30
Boston College	7-7	13-12	50
Florida State	6-8	16-11	39
Wake Forest	4-10	14-13	NA
Syracuse	3-11	8-13	NA
Louisville	2-12	12-17	NA
NC State	1-13	11-16	NA
Pittsburgh	0-14	2-18	NA



NAME	YEAR	HOMETOWN/PREVIOUS SCHOOL
Daneika Borthwick	R-Sr.	Cumbria, England/Nelson Thomlinson School
Gabriella Castaneda	So.	Miramar, Fla./Broward Virtual School
Julia Mikulski	Fr.	Essen, Germany/Helmholtz Gymnasium
Yukako Noi	Sr.	Nara, Japan/VCU/Nishinomiya-Koei
Kathryn Phillips	So.	Bradenton, Fla./IMG Academy
Ariana Rahmanparast	Fr.	Miami, Fla./Florida Virtual School
Lana Rush	So.	London, England/Cheam High School
Daniela Schippers	Jr.	Guatemala City, Guatemala/Laurel Springs School

## COACHING STAFF

**Head Coach:** Jennifer Hyde (12th Season)

**Assistant Coach:** Zsuzsanna Fodor (3rd Season)

**Volunteer Assistant Coach:** Giorgia Pozzan (2nd Season)



**Standing (L-R):** Assistant Coach Zsuzsanna Fodor, Manager Clay Pfiefler, Lana Rush, Gabriella Castaneda, Head Coach Jennifer Hyde, Daneika Borthwick, Julia Mikulski, Athletic Trainer Joshua McIntosh, Volunteer Assistant Coach Giorgia Pozzan  
**Kneeling (L-R):** Yukako Noi, Daniela Schippers, Kathryn Phillips, Ariana Rahmanparast





SENIOR

# DANEIKA BORTHWICK

Cumbria, England • Nelson Thomlinson School

Three-time All-ACC (2013-15) • Career-high ITA #31  
 2015 ITA Southeast Region Most Improved Senior  
 2015 ACC All-Academic & ITA Scholar Athlete

## Senior 2014-15

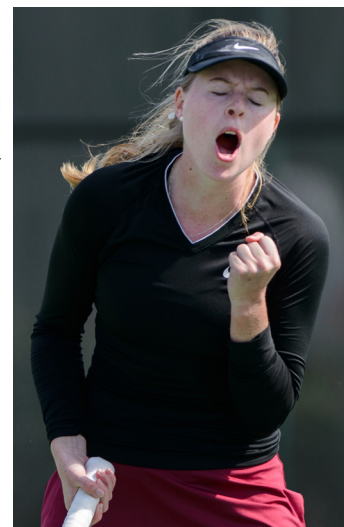
**Spring:** Played every match on Ct. 1, finishing 15-8 on the season and 8-6 in ACC play...went 6-9 against ranked competition...went 12-11 in doubles play, including 10-10 on Ct. 1 playing with Yukako Noi (5-4), Kerrie Cartwright (3-4), and Emily Fanning (2-2)...went 3-1 in the ACC Tournament, including a 4-6, 7-5, 6-3 victory over No. 102 Johnnie Renaud of Georgia Tech...ran off an eight-match win streak midseason that included another ranked win over Renaud...did not drop a match during the streak...made the All-ACC Academic Team for the third season and named the Southeast Region Most Improved Senior of the Year winner by the ITA...All-ACC Third Team...ACC Academic Honor Roll and ITA Scholar-Athlete.

**Fall:** Posted a 6-7 singles record and a 6-6 doubles record during the fall season...had three wins over ranked opponents...defeated Florida's No. 51 Kourtney Keegan (0-6, 6-3, 6-4), Texas Tech's No. 113 Kenna Kilgo (6-1, 6-2) and Arkansas' No. 121 Shannon Hudson (7-6 [2], 6-0)...won her first four matches at the Riviera/ITA All-American tournament in California...was preseason ranked No. 9 in doubles by the ITA with partner Kerrie Cartwright...played with Emily Fanning in the USTA Collegiate Clay Court Invitational presented by VISIT FLORIDA at Disney's Wide World of Sports complex...won their first three doubles matches to reach the finals...fell to Auburn's No. 30 Michala Kucharova and Reka Muller in a three-set thriller (6-7 [5], 6-1, 0-1 [12]).

## Junior 2013-14

**Spring:** Earned All-ACC Third Team honors with a 15-10 singles record, including three wins over ranked opponents...finished the season with a 14-6 mark in doubles, including a 13-5 record with partner Kerrie Cartwright as they defeated three ranked pairs and qualified for the 2014 NCAA Doubles Championships...won nine doubles matches in a row from March 17 to May 9 with victories over Clemson's No. 26 Yana Koroleva/Beatrice Gumulya (8-5) and Virginia's No. 11 Julia Elbaba/Rachel Pierson (8-6)...Borthwick and Cartwright were ranked as high as No. 30 by the ITA before ending the season at No. 32...recorded three separate win streaks of at least three matches - Jan. 31 to Feb. 8, March 2 to March 9 and April 13 to April 24...had eight singles wins on court one and seven wins on court two...her most memorable singles win came on court two as her 7-5, 3-6, 6-2 victory over No. 106 Kim Stubbe of Arizona clinched the Seminoles' upset victory over the No. 27 Wildcats in the first round of the NCAA Team Championships.

**Fall:** Ranked No. 46 during the fall and posted a 5-4 singles record, including a 2-1 record over ranked opponents...finished with a 2-5 mark in doubles...played in the qualifying draw of the Riviera/ITA All-American Championships and defeated No. 66 Sarah Pham of Utah in three sets, 7-5, 5-7, 6-4...was ultimately eliminated by Yang Pang of Arkansas, 6-3, 3-6, 7-5...competed well at the USTA Clay Court Invitational at Disney, reaching the quarterfinals by defeating Texas A&M's Paula Deheza and Florida's Stefani Stojic.



## Sophomore 2012-13

**Spring:** Played most of her matches on court one...was named to the All-ACC team in 2013...played 26 singles matches against ranked players and posted an 18-16 record overall...was named ACC Player of the Week after FSU's wins against USF's Katie Vasenina (No. 35) 6-4, 6-4 and Miami's Kelsey Laurente (No. 52) 7-5, 4-6, 7-6...the win over Laurente lifted the Seminoles to a 4-3 victory over the Hurricanes - the fifth in program history...was 16-16 in doubles...while paired with Francesca Segarelli the duo defeated the No. 52 pair of Caroline Price and Whitney Kay of UNC 8-4...was ranked in every single ITA poll in 2013 and peaked at No. 31 before finishing out the season at the NCAA Championships at No. 62.

**Fall:** Without even playing a match as a Seminole, Borthwick was selected to play in the prequalifying rounds of the ITA/Riviera All-American Championships in singles and doubles...made her FSU debut by defeating No. 18 Brynn Boren of Tennessee at the Furman Fall Classic, which remains her highest-ranked win...defeated two more ranked opponents in No. 86 Channele Van Nguyen of UCLA and No. 49 Alex Cercone of Florida...rated the ninth-best newcomer according to the ITA...finished the fall with a 12-4 showing in singles while going 7-6 in doubles.

## Freshman 2011-12

Sat out the season.

## High School

Qualified for the 2011 Junior Championships at Wimbledon, advancing into the third round...was a member of the U-18 Great Britain team for the Maureen Connolly competition, which is set up as Great Britain vs. the U-18 American team...represented Great Britain during the U-16 IC tournament...Borthwick attended the Nelson Thomlinson School where she played netball, hockey, cross country and participated in athletics in addition to tennis.

## Personal

Born May 14, 1993...daughter of Tom and Linda Borthwick...father Tom played semi-pro rugby...graduated with degree in sport management in 2015 and working on a sport management Master's.

### CAREER STATS

Singles	Year	Overall	Fall	Spring	Dual	ACC	Ct. 1	Ct. 2	Ct. 3	Ct. 4	Ct. 5	Ct. 6	vs. Ranked
	2012-13	18-16	12-4	6-12	2-9		6-10	0-2					8-10
	2013-14	20-14	5-4	15-10	6-6		8-7	7-3					3-7
	2014-15	21-15	6-7	15-8	8-6		15-8						6-9
	TOTALS	59-45	23-15	36-30	16-21		29-25	7-5					17-26
Doubles	Year	Overall	Fall	Spring	Dual	ACC		Ct. 1		Ct. 2		Ct. 3	vs. Ranked
	2012-13	16-16	7-6	9-10	7-5			4-8		5-2			2-4
	2013-14	16-11	2-5	14-6	6-4			14-6					3-8
	2014-15	18-17	6-6	12-11	7-6			10-10		2-1			2-11
	TOTALS	50-44	15-17	35-27	20-15			28-24		7-3			7-23





SENIOR

# YUKAKO NOI

Nara, Japan • Nishinomiya-Koei  
Virginia Commonwealth University

2014 All-Academic Team (VCU) • US Open Regional qualifier  
Career-high ITA #79



**Junior 2014-15**  
**Spring:** Finished the spring 15-9 in singles and 11-12 in doubles...went 6-7 in ACC play, 11-6 on Ct. 3 and 4-2 on Ct. 4...won three matches on the season against ranked opponents...went 7-5 with Daneika Borthwick in doubles action, including 5-2 in the ACC and won two matches against ranked teams...clinched the match for the Seminoles in the ACC Quarterfinals against No. 15 Miami with a 7-6 (5), 1-6, 6-2 win over No. 74 Clementina Riobueno on Ct. 3...best win of the year came against No. 13 Brianna Morgan of Florida, a straight-set, 7-5, 6-4 win...won five consecutive matches at the end of the season before jumping to face the No. 27 Georgia Tech team on Ct. 2, her only match on the court all season...in doubles, paired with Borthwick to win matches against Monique Albuquerque and Riobueno of Miami in the regular season, 8-4, and No. 77 Elisha Hande and Joanna Nalborska of Notre Dame, 8-2...last eight matches of the season came on Ct. 1 playing with Borthwick.  
**Fall:** Was preseason ranked No. 79 in singles by the ITA, the highest singles ranking on the team...won her first match as a Seminole against Ohio State's No. 69 Gabriela De Santis (6-1, 6-1) at the Riviera/ITA All-American tournament in California...posted an 8-6 singles record during the fall season...reached the quarterfinals at the Bedford Cup in Jacksonville after defeating Florida's Spencer Liang (2-6, 6-1, 6-0)...made it to the semifinals after winning her first two matches in the USTA Collegiate Clay Court Invitational presented by VISIT FLORIDA at Disney's Wide World of Sports complex...split time playing with Lana Rush and Daniela Schippers in doubles.

**At VCU:**  
Went 17-9 in singles and 8-8 in doubles in 2013-14...was ranked as high as No. 81 in singles...defeated No. 114 ranked Brigit Folland of South Carolina in straight sets 6-2, 6-3...posted a singles record of 13-8 and a 5-3 doubles mark in 2012-13...named to the Atlantic 10 First Team in 2013 and 2014...amassed 30 wins in singles as a Ram and 13 wins in doubles... she competed primarily at No. 2 singles and No. 1 doubles...she was a top-16 seed in the 2013 ITA Atlantic Regional in both singles (No. 13) and in doubles with partner Cindy Chala (No. 11)...Noi was named to the Athletic Director's Honor Roll in both 2013 and 2014 while at VCU and was named to the All-Academic Team in 2014...she joined an FSU team that equally pursues excellence in the classroom and on the court as the Florida State women's tennis squad has won the Golden Torch in 16 of the last 17 years, given to the FSU athletic team with the highest overall GPA...Noi brings a very solid work ethic to the Florida State program and brings a wealth of experience as an upperclassman to an already upperclassmen-heavy roster.

**Personal:**  
Born on August 31, 1993...daughter of Yuji and Fumiyo Noi...attended Nishinomiya-Koei school...went to a swimming academy for eight years...majoring in sport management.

CAREER STATS													
Singles	Year	Overall	Fall	Spring	Dual	ACC	Ct. 1	Ct. 2	Ct. 3	Ct. 4	Ct. 5	Ct. 6	vs. Ranked
at VCU	2012-13	13-8	0-0	13-8	0-0 (A-10)			7-4	2-1	1-3	2-0		1-1
at VCU	2013-14	17-9	9-5	8-4	1-0 (A-10)		1-1	6-3	1-0				2-5
at FSU	2014-15	23-15	8-6	15-9	6-7			0-1	11-6	4-2			3-6
	TOTALS	53-32	17-11	36-21	7-7		1-1	13-8	14-7	5-5	2-0		6-12
Doubles	Year	Overall	Fall	Spring	Dual	ACC		Ct. 1				Ct. 3	vs. Ranked
at VCU	2012-13	5-3	0-0	5-3	0-0 (A-10)			5-3					0-0
at VCU	2013-14	8-8	4-6	4-2	0-0 (A-10)			1-2		3-0			0-0
at FSU	2014-15	14-17	3-5	11-12	6-7			5-4		4-2		2-6	2-5
	TOTALS	27-28	7-11	20-17	6-7			11-9		7-2		2-6	2-5





JUNIOR

# DANIELA SCHIPPERS

Guatemala City, Guatemala  
Laurel Springs School

2015 ITA Scholar-Athlete • 2015 ACC Academic Honor Roll  
All-ACC Academic Team



## Sophomore 2014-15

**Spring:** 14-6 dual match record, including 0-1 on Ct. 4, 5-3 on Ct. 5 and 9-2 on Ct. 6...finished the year 1-3 against ranked opponents...in doubles, went just 2-3 in dual matches, all playing with Yukako Noi...her one win against a ranked opponent was versus No. 78 Ashley Dai of North Carolina, 7-5, 6-3...won in straight sets against No. 2 Florida's Stefani Stojic, 6-2, 6-2...started the season off with a 6-0, 6-1 win against No. 53 USF at the ITA Kick-Off Weekend...won six consecutive matches from March 20 (6-2, 6-3 vs. No. 32 Notre Dame) to April 12 (1-6, 6-1, 6-2 at Pitt)...ITA Scholar-Athlete...ACC Academic Honor Roll...All-ACC Academic Team.

**Fall:** Went 7-6 in singles and 3-6 in doubles during the fall season...won four straight matches at the Bedford Cup in Jacksonville en route to capturing the consolation bracket title...split time playing with partners Lana Rush and Yukako Noi in doubles...participated and won a bronze medal in the doubles draw, and reached the second round of the singles draw at the 2014 Central America and Caribbean Games in Veracruz, Mexico representing her home country of Guatemala.

## Freshman 2013-14

**Spring:** Arrived in Tallahassee in January 2014 and immediately made an impact for Florida State, winning her first singles match against Paula Castro of UAB (6-1, 6-0) to clinch the team match...clinched five other team matches, including four ACC matches - Boston College, NC State, Pitt and Virginia Tech...finished with a 10-11 record in singles with a 10-7 record in doubles...often paired with Mia Vriens in doubles and posted a 7-5 record with her including four conference wins...won eight of her first 10 doubles matches, including an 8-6 win over No. 50 Samantha Asch and Luisa Fernandez of Wake Forest on Feb. 21...her 6-4, 6-2 singles victory against Arizona's Akilah James was key in FSU's upset victory over the Wildcats in the first round of the NCAA Championships.

## High School

Won two ITF Doubles finals in 2013, including the 10K Quintana Roo as she was paired up with former Seminole Francesca Segarelli...was the youngest player in Fed Cup history for Guatemala in 2010 and also played for the country in 2011 and 2012...had three other ITF Doubles titles, including the 2011 Copa Mundo Maya in 2011 and reached three other finals, as well as reaching three singles finals...was the COTECC No. 1 ranked U-14 in 2008 and reached a career high ITF ranking of 213 in 2012.

## Personal

Born March 28, 1995...daughter of John and Regina Schippers...her sister, Paulina, played tennis at Auburn...majoring in hospitality management...aspires to own a restaurant or tennis club.

## CAREER STATS

Singles	Year	Overall	Fall	Spring	Dual	ACC	Ct. 1	Ct. 2	Ct. 3	Ct. 4	Ct. 5	Ct. 6	vs. Ranked
	2013-14	10-11	0-0	10-11	5-7				3-3	6-7		1-1	0-3
	2014-15	21-12	7-6	14-6	8-3					0-1	5-3	9-2	1-3
	TOTALS	31-23	7-6	24-17	13-10				3-3	6-8	5-3	10-3	1-6
Doubles	Year	Overall	Fall	Spring	Dual	ACC	Ct. 1	Ct. 2	Ct. 3	Ct. 4	Ct. 5	Ct. 6	vs. Ranked
	2013-14	10-7	0-0	10-7	5-3					4-4		6-3	1-2
	2014-15	5-9	3-6	2-3	0-1					1-1		1-2	0-2
	TOTALS	15-16	3-6	12-10	5-4					5-5		7-5	1-4





SOPHOMORE

# GABRIELLA CASTANEDA

Miramar, Fla.  
Broward Virtual School

All-ACC Third Team  
Team-high 26 wins in 2015



## Freshman 2014-15

**Spring:** Finished the spring 16-6 and 10-2 in the ACC in singles play...playing primarily on Ct. 3 and 4, finished 15-6...her 26 singles wins and 10 wins in conference play were the most on the team...had a winning record against ranked players (5-4)...won her last two matches of the year and went 6-1 in her last 10 matches (three DNF)...in doubles, paired with Emily Fanning to go 10-2 in dual matches, including 9-0 on Ct. 2...4-2 in doubles against ranked opponents...won seven consecutive singles matches heading into the ACC Tournament, including ranked wins over No. 72 Whitney Kay of UNC and No. 76 Clementina Riobueno of Miami...starting in the ITA Kick-Off, went over two months without losing a doubles match, from Jan. 24 to March 27...won five of six total matches (singles and doubles) in the ACC Tournament, including a 7-5, 6-7 (3), 6-1 thriller against Kendal Woodard of Georgia Tech in the ACC Semifinals...All-ACC Third Team

**Fall:** Had one of the best fall seasons in Florida State freshman history...started off her collegiate career 9-0 in singles, winning her first two tournaments...finished with a team-best 10-4 record in singles, and went 5-6 in doubles...in her first ever match, she defeated Vanderbilt's No. 39 Frances Altick in straight sets 6-3, 6-3...went on to defeat two more opponents en route to the Flight One singles title at the Furman Fall Classic in Greenville, S.C....continued her success as she swept through the competition at the Bedford Cup in Jacksonville to capture her second singles title of the fall season...defeated Miami's No. 111 Monique Albuquerque in the first round at the ITA Southeast Regional Championships in Atlanta in straight sets 7-6, 6-2...went 2-1 against nationally ranked opponents in singles and 1-1 in doubles...paired with partner Emily Fanning in doubles for almost all of the fall season and held a 5-3 record...reached the finals together at the Furman Fall Classic in Greenville, S.C., after defeating Vanderbilt's No. 17 Courtney Colton and Sydney Campbell 8-2 in the semifinals...won both doubles matches with Fanning at the Bedford Cup to start the tournament to advance to the semifinals.

## High School

Won both the singles and doubles FHSAA tennis titles as a freshman and a sophomore while at Everglades High School in Miramar, Fla...she competed in an ITF Juniors event in Honduras in September 2012 and won the IV Arabe Internacional Cup by defeating El Salvador's Jennifer Paola Atriga Henriquez 4-6, 6-1, 7-6 (3)...she also made the semifinals of the doubles draw at that same tournament.

## Personal

Born December 8, 1995...daughter of Larry and Olga Castaneda...has one brother Gabriel and a sister Sacha...majoring in sport management...enjoys relaxing at the beach and watching movies.

## CAREER STATS

Singles	Year	Overall	Fall	Spring Dual	ACC	Ct. 1	Ct. 2	Ct. 3	Ct. 4	Ct. 5	Ct. 6	vs. Ranked
	2014-15	26-10	10-4	16-6	10-2		1-0	6-2	9-4			5-4
	TOTALS	26-10	10-4	16-6	10-2		1-0	6-2	9-4			5-4
Doubles	Year	Overall	Fall	Spring Dual	ACC	Ct. 1	Ct. 2	Ct. 3	vs. Ranked			
	2014-15	18-8	5-6	13-2	5-2	1-2	11-0	1-0	4-2			
	TOTALS	18-8	5-6	13-2	5-2	1-2	11-0	1-0	4-2			





SOPHOMORE

# KATHRYN PHILLIPS

Bradenton, Fla.  
IMG Academy

## Freshman 2014-15

**Spring:** Named a 2015 ITA Scholar-Athlete for her work in the classroom...also named to the ACC Academic Honor Roll...went 0-1 in the spring...member of the Student-Athlete Advisory Committee (SAAC) and an FCA leader.

**Fall:** Did not play.

## High School

Attended Norman High School for her freshman season before attending IMG Academy in Bradenton, Fla.... MVP of Norman High School tennis team as a freshman...also was a letterwinner and earned Athlete of the Month honors while at Norman...named the Nick Bollettieri Student-Athlete of the Year as a senior at IMG Academy...played in the Eddie Herr International Junior Championships.

## Personal

Born on March 6, 1996...daughter of Greg and Deanna Phillips...member of the National Honor Society...graduated with a 4.5 GPA...was student council president and a member of the Key Club and Student Activities Committee...majoring in communications and aspires to be a sports broadcaster.



### CAREER STATS

Singles	Overall	Spring
2014-15	0-1	0-1



SOPHOMORE

# LANA RUSH

London, England  
Cheam High School

## Freshman 2014-15

**Spring:** Played three singles matches for the 'Noles on Ct. 6 and went 3-3 in doubles matches, all on Ct. 3...went 3-3 in doubles playing with both Mia

Vriens (8-2 vs. Mercer) and Kerrie Cartwright (8-2 at Louisville)...lost a tough 5-7, 6-3, 1-0 (10) match against Natalia Janowicz of NC State on March 22...that same day, led Florida A&M's Elysa Ortiz 6-0, 5-1 when the match was decided for the Seminoles...ACC Academic Honor Roll.

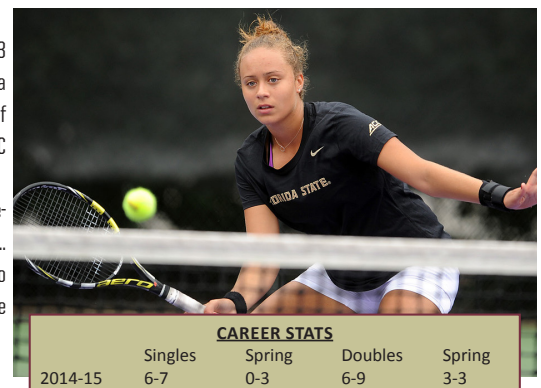
**Fall:** Had a very solid fall season to begin her collegiate career...posted a 6-4 singles record and 2-5 doubles record splitting between partners Daniela Schippers and Yukako Noi...won her first ever match against Furman's Karlee Bryde in straight sets 6-1, 6-4...ended up winning third place in Flight Four at the Furman Fall Classic in Greenville, S.C., after defeating Alabama's Carmen Blanco 6-1, 6-2...played very well at the ITA Southeast Regional Championships in Atlanta by winning her first three singles matches of the tournament to advance to the B Draw finals.

## High School

Won a total of eight national championships in singles and doubles across various age groups (u10, u12, 14, 16 and 18)...ranked No. 1 from age 10-16...played at Wimbledon in 2012 and 2013...won seven doubles titles in 2013, including six ITF championships...competed at the No. 1 position in the u14 (2011) and u16 (2013) Junior Fed Cups for Great Britain...represented her country from age 10-17 in international events, group tournaments and friendlies...was the youngest girl to be invited to train at the National Tennis Centre from ages 13-17.

## Personal

Born February 9, 1997...daughter of Matthew and Caroline Rush...grew up in London...also competed in swimming and athletics for eight years during childhood...majoring in communications.



### CAREER STATS

Singles	Spring	Doubles	Spring
2014-15	6-7	0-3	6-9





FRESHMAN

# JULIA MIKULSKI

Essen, Germany  
Helmholtz Gymnasium

**Before FSU**  
Placed second in the U14 German Championships in singles and U18 German Championships in doubles... won the U14 Polish Championship...competed for the German junior Fed Cup team at age 15.

**Personal**  
Parents are Katarzyna and Waldemar Mikulski...has one older brother, Jakub...both parents are from Poland, and Julia speaks Polish as well as German...majoring in sport management.



FRESHMAN

# ARIANA RAHMANPARAST

Miami, Fla.  
Florida Virtual School



**Before FSU**  
Career-high of 153 in the ITF Juniors rankings (7/28/14)...singles record 46-29...doubles record 42-27...won the singles and doubles titles at the XXIII Copa Merengue in Santo Domingo, Dominican Republic...won five rounds of singles without dropping a set...won the singles and doubles draw at the Copa Cariari 2014 in San Jose, Costa Rica...won doubles at the Jalisco Junior Cup in Guadalajara, Mexico...won the singles title at the Queretaro Junior Cup in Queretaro, Mexico...4-5 career record in the Fed Cup playing for Costa Rica.

**Personal**  
Born December 29, 1996...cousin plays professional rugby in Argentina...majoring in sport management.





# HEAD COACH JENNIFER HYDE



12th Season  
Alpharetta, Ga.  
Florida State '95

Jennifer Hyde enters her 12th season at the helm of the Florida State program as FSU's winningest women's tennis coach. Hyde surpassed Anne Davis (1980-86) with her 142nd career win on March 22, 2014 against NC State. Hyde has led the Seminoles to NCAA appearances eight of the past nine seasons, including their first ever Sweet 16 in 2010. With an exceptional list of accomplishments and milestones from her career at FSU, including an honor of ITA South Region Coach of the Year in both 2007 and 2011, Hyde looks to guide the Seminoles deep into the NCAA Tournament in 2016.

In 2015, the Seminoles posted a 16-11 record and reached the ACC Semifinals. During the year, the 'Noles defeated five ranked teams, including No. 36 Notre Dame and No. 15 Miami in the ACC Tournament in Cary, N.C. In reaching the semifinals, the Seminoles reached at least the quarterfinals of the ACC Tournament for the ninth consecutive season. While the team was the first team left on the bubble for the NCAA Tournament, Hyde oversaw the continued development of Daneika Borthwick, who was named the ITA Southeast Region Most Improved Senior of the Year, and Gabby Castaneda, who as

a freshman led the Seminoles with 26 wins on the season.

The Seminoles posted a solid 16-13 season in 2013-14 with ranked wins over five opponents, including an exciting 4-3 upset victory over No. 27 Arizona in the first round of the 2014 NCAA Championships. FSU finished eighth in the ACC regular season and opened the ACC Tournament with a 4-1 win over No. 64 Syracuse.

FSU placed two players on the All-ACC team as Kerrie Cartwright earned second team honors while Borthwick was named to the third team. The pair of Seminoles were an impressive doubles duo late in the season, winning nine straight matches from March 17 to May 9, with victories over No. 26 Yana Koroleva and Beatrice Gumulya of Clemson and No. 11 Julia Elbaba and Rachel Pierson of Virginia. Cartwright and Borthwick qualified for the 2014 NCAA Doubles Championships and were the first Seminole pairing to compete in the postseason since 2007.

For the third time in school history and second time while leading the Seminoles, Hyde led FSU into the 2013 ACC Championship match after defeating Wake Forest, Clemson and Virginia en

## Coaching Record

### **Houston (5 years) Head Coach**

2000: 9-14  
2001: 7-16  
2002: 11-13  
2003: 13-10  
2004: 15-10  
**Total: 55-63**

### **Florida State (11 years) Head Coach**

2005: 11-12  
2006: 9-13  
2007: 16-8  
2008: 19-8  
2009: 17-8  
2010: 16-11  
2011: 16-9  
2012: 13-11  
2013: 16-10  
2014: 16-13  
2015: 16-11  
**Total: 165-114**  
**Overall: 220-177**







route to the final against Miami. During that run, the Seminoles defeated the Tigers for the first time since 2001 in a match that saw over five hours of play. In addition, Borthwick earned All-ACC honors while helping the team to a 16-10 overall record.

At the start of the 2012-13 season, Hyde led five Seminoles to the Riviera/ITA-All-American Championships - the most to ever qualify for the Malibu event in FSU history.

The Seminoles concluded the 2011 season with an eight-match winning streak, landing the Seminoles back to the ACC title match for just the second time in program history. The first time occurred in 1994 when Hyde was an athlete on the team. During that span, FSU recorded the most successful weekend of play in program history by beating No. 3 Duke and No. 4 UNC in back-to-back matches to close out the regular season. Taking that momentum into the ACC Tournament, the Seminoles knocked off Wake Forest, No. 8 Virginia and No. 3 Duke for a second time as Hyde earned her 100th career victory in the process.

In addition, the Seminoles jumped to No. 11 in the ITA National Rankings, breaking the previous high mark of No. 12 set by the 2007-08 team.

Just one season earlier, Hyde led the Seminoles to perhaps the most successful season in Florida State history taking her team to its first ever NCAA Round of 16. After being selected to host the first and second rounds of the NCAA Championship for just the second time in program history, both under Hyde, the Seminoles dominated North Florida and No. 17 South Carolina to punch their ticket to Athens, Ga., and to the highly coveted Round of 16. Hyde also watched her first 'Nole earn ACC Freshman of the Year when Francesca Segarelli captured the honor in 2010.

The 2007-08 season welcomed several firsts for the program with Florida State hosting the first and second round of the NCAA Tournament. The Seminoles reached a No. 12 national ranking, the highest ranking in women tennis program history at the time. With the help of big wins against top ranked programs during the 2008 season, the Seminoles finished

the year with an overall record of 19-7, the winningest season since 1999, ranking second on the all-time list at Florida State. Also, Hyde coached freshman Katie Rybakova to a top 20 national ranking in which Rybakova also received a bid to participate in the NCAA Singles Championships as a freshman.

Hyde's players have made seven appearances at the NCAA Championships in singles as well as three doubles pairs. Rybakova is one of two players in FSU history to qualify for the NCAA Championships three out of her four years (2008, 2009, 2011) in singles.

Off the court, Hyde's student-athletes have continued their brilliance in the classroom by securing the Golden Torch Award nine times since her arrival, which is given to the Florida State athletic team with the highest GPA. In addition, numerous Seminoles have landed spots on the All-ACC Academic team, All-ACC Honor Roll and ITA Scholar-Athletes list in Hyde's 11 years as head coach.

Both Federica Suess and Rybakova earned ACC post-graduate scholarships. Suess was awarded the scholarship in 2009 during her senior year, while Rybakova earned the honor for her fifth year in 2011.

After graduating from FSU in 1995, Hyde began her coaching career as an assistant for the Seminoles prior to heading north to the University of Iowa in 1995. Hyde spent two years in the midwest before returning to the south with an assistant coaching stint at the University of Alabama (1997-98).

Hyde moved on to coach at the University of North Carolina in 1998-99 where she established herself as one of the best young coaches in the sport. With her assistance, UNC enjoyed one of its best seasons in program history, moving from outside all the national polls to a top-25 ranking and the school's first NCAA tournament berth.

In 1999, Hyde accepted her first head coaching position at the University of Houston. Hyde spent five increasingly successful years with the Cougars before returning to Tallahassee, where she first started her collegiate tennis career.

The Alpharetta, Ga., native posted an impressive career with the Seminoles establishing herself as a four-year letterwinner, NCAA Tournament participant (1994) and ACC flight champion in doubles alongside teammate Jenny Graf. Hyde captained the 1994 Seminole squad whose No. 17 ranking previously stood for sixteen years as the highest year end ranking until 2010's No. 14 finish. Hyde earned a Masters Degree from Florida State in sport management in 2011.







# ASSISTANT COACH ZSUZSANNA FODOR



3rd Season  
Budapest, Hungary  
Cal '07

## Coaching Record

### Florida State (2 years) Assistant Coach

2014: 16-13  
2015: 16-11  
Total: 32-24

Zsuzsanna Fodor begins her third season as assistant coach of the Florida State women's tennis program. A two-time All-American in both singles and doubles at Cal who also spent several years playing professional tournaments around the world, Fodor looks to continue to build and bring success to the Seminole tennis program.

In Fodor's second season, the Seminoles finished 16-11 and reached the ACC Tournament semifinals. The run to the semifinals included wins over higher ranked teams from Notre Dame (No. 36) and Miami (No. 15). Along the way, senior Daneika Borthwick was named the ITA Southeast Region Most Improved Senior of the Year. Additionally, freshman Gabby Castaneda won a team-high 26 matches as the 'Noles beat five ranked opponents.

In 2013-14, the Seminoles posted a 16-13 record and qualified for the NCAA Championships for the 18th time in school history. Kerrie Cartwright and Borthwick each reached flight finals at the Furman Fall Classic while Majlena Pedersen won the singles B draw at the ITA Southeast Regional.

The team posted an 11-3 record at home, including ranked wins over USF, LSU and Virginia Tech. The Seminoles advanced to the quarterfinals of the 2014 ACC Championship and reached the second round of the NCAA Championships after defeating No. 27 Arizona, 4-3, to open the tournament.

As a six-time Hungarian national champion, Fodor brings an extraordinary array of experience to the Florida State Seminoles coaching staff.

In 2008, Zsuzsanna Fodor was the assistant coach of women's tennis at the University of California, Berkeley where the Cal Golden Bears advanced to the NCAA team championship finals and completed the season ranked No. 3 in the ITA. That same year, the Golden Bears' pairing of Jana Juricova and Mari Andersson also captured the NCAA doubles title.

As a player at Cal, Fodor was twice named to the All-Pac-10 First Team (2006 and 2007). She first earned the honor as she captured the 2006 Pac-10 singles championship on her way to being named Pac-10 Player of the Year.

Coupled with fellow All-American Susie Babos, Fodor also received conference recognition as part of the 2007 Pac-10 Doubles Team of the Year as they posted a 21-7 record together.

Fodor earned an ITA No. 3 singles ranking and a No. 2 doubles ranking as a junior in 2006 as she won the ITA Northwest Regional Championship doubles title with Babos. In the fall of 2005, she won the singles title at the ITA Northwest Regional Championship.

She arrived at Berkeley after transferring from Mississippi State, where she was named the Southeastern Conference Freshman of the Year in 2005.

Fodor received a degree from Cal in interdisciplinary studies in 2007 and currently resides in Tallahassee, Fla.





## VOLUNTEER COACH GIORGIA POZZAN



2nd Season  
Lacchiarella, Italy  
Houston '12

Pozzan enters her second season at Florida State as a volunteer assistant coach with an ability to translate her strong playing background into coaching.

In 2012-13, Pozzan was a volunteer assistant coach at Houston. She helped lead the Cougars to a 21-6 record including trips to the NCAA Tournament and the Conference USA Championships.

After Houston, she spent a year as a teaching assistant at UH in the sociology department. During the summer she plays tennis in Italy in Serie B.

As a player at Houston, Pozzan led the Cougars both seasons in dual singles play. She finished her career with a record of 50-17, ranking third all-time in Houston school history with a 74.6 winning percentage. Pozzan also tallied a 48-21 overall doubles record in two seasons with the Cougars. She was named to the All C-USA Second Team in 2012 and to the C-USA Commissioner's Honor

Roll in 2011 and 2012. Before playing at Houston, Pozzan spent her first two years at Sam Houston State.

Pozzan graduated with a masters degree in sociology from the University of Houston. She is currently obtaining her Ph.D. in criminology at Florida State.



## DIRECTOR OF OPERATIONS TAMI BROWN



7th Season  
Victoria, Texas  
Houston '86

Men's and Women's Director of Tennis Operations Tami Brown is entering her seventh season with the Seminoles. Before joining the Florida State tennis programs, she taught elementary school for 13 years in Victoria, Texas and also ran her own learning company for eight years.

After playing high school tennis, Brown attended the University of Houston and graduated in 1986.

Brown has been married to husband Brian for 27 years. The pair have two sons, Collin and Drew. Collin was a four-

year tennis player at Florida Gulf Coast University from 2009-13, while Drew plays high school tennis at Leon High School in Tallahassee.







# TENNIS SUPPORT STAFF



**Kim Hinckley**  
Indoor Tennis  
Facility Coordinator



**Casey Kurtz**  
Marketing  
Assistant



**Joshua McIntosh**  
Athletic Trainer



**Cody Paulsen**  
Stringer



**Brodie Quinn**  
Strength &  
Conditioning



**David Register**  
Accountant  
Specialist



**Deana Ruggeri**  
Assistant Director,  
Academics



**Taylor Wheaton**  
Asst. Director of  
Facilities



**Clay Pfiefler**  
Team Manager



**Haley Simard**  
Asst. Manager





## #30 Florida State def. #53 USF, 4-1 January 24, 2015 Coral Gables, Fla. (Neil Schiff Tennis Center)

### Singles (6,5,4,3)

- |  |                     |
|--|---------------------|
| 1. #46 Borthwick (FSU) vs. Olaya Garrido-Rivas (USF) | 6-1, 6-7, 3-4, dnf  |
| 2. Cartwright (FSU) vs. Vera Bessnova (USF)          | 4-6, 6-4, 2-5, dnf  |
| 3. Castaneda (FSU) def. Olga Martinez (USF)          | 6-2, 4-6, 6-2       |
| 4. Yukako Noi (FSU) def. Jessica Cortes Chave (USF)  | 7-5, 6-4            |
| 5. Juliana Cardosa (USF) def. Fanning (FSU)          | 2-6, 6-3, 3-0, ret. |
| 6. Schippers (FSU) def. Hailey Grillo (USF)          | 6-0, 6-1            |

### Doubles (1,3)

- |  |          |
|--|----------|
| 1. Borthwick/Fanning (FSU) def. Garrido-Rivas/Chave (USF)        | 6-3      |
| 2. Noi/Vriens (FSU) vs. Bessnova/Martinez (USF)                  | 5-4, dnf |
| 3. Cartwright/Castaneda (FSU) def. Cardosa/Alicia Robinson (USF) | 6-3      |

**Records:** Florida State 1-0; USF 0-1

**Notes:** ITA Kick-Off Weekend

## #13 Miami def. #30 Florida State, 5-0 January 25, 2015 Coral Gables, Fla. (Neil Schiff Tennis Center)

### Singles (6,5,3,2)

- |  |                |
|--|----------------|
| 1. #46 Borthwick (FSU) vs. #7 Wagner (UM)        | 7-6 (10), dnf  |
| 2. #39 Sinead Lohan (UM) def. Cartwright (FSU)   | 6-3, 6-0       |
| 3. #94 Lina Lileikite (UM) def. Castaneda (FSU)  | 6-3, 6-1       |
| 4. Noi (FSU) vs. #88 Clementina Riobueno (UM)    | 4-6, 2-3, dnf  |
| 5. #58 Wendy Zhang (UM) def. Schippers (FSU)     | 6-4, 6-1       |
| 6. Monique Albuquerque (UM) def. Lana Rush (FSU) | 6-1, 3-0, ret. |

### Doubles (2,1)

- |   |          |
|---|----------|
| 1. #8 Lileikite/Wagner (UM) def. Borthwick/Fanning (FSU)  | 6-4      |
| 2. #15 Albuquerque/Riobueno (UM) def. Noi/Schippers (FSU) | 6-2      |
| 3. Cartwright/Castaneda (FSU) vs. #37 Lohan/Zhang (UM)    | 5-4, dnf |

**Records:** Florida State 1-1; Miami 2-0

**Notes:** ITA Kick-Off Weekend

## #34 Florida State def. Florida Gulf Coast, 4-0 February 14, 2015 Tallahassee, Fla. (Speicher)

### Singles (6,4,2)

- |   |               |
|---|---------------|
| 1. #81 Borthwick (FSU) vs. Sarah Means (FGCU)     | 6-2, 5-4, dnf |
| 2. Cartwright (FSU) def. Breana Stampfli (FGCU)   | 6-1, 7-6 (1)  |
| 3. Castaneda (FSU) vs. Johanna Sterkel (FGCU)     | 5-7, 2-2, dnf |
| 4. Noi (FSU) def. Elizabeth Means (FGCU)          | 6-3, 6-2      |
| 5. Schippers (FSU) vs. Candela Munoz-Giron (FGCU) | 6-4, 3-3, dnf |
| 6. Fanning (FSU) def. Julianna Curtis (FGCU)      | 6-2, 6-2      |

### Doubles (2,1)

- |   |          |
|---|----------|
| 1. Borthwick/Fanning (FSU) def. Means/Means (FGCU)            | 8-3      |
| 2. Noi/Schippers (FSU) def. Curtis/Sterkel (FGCU)             | 8-2      |
| 3. Castaneda/Cartwright (FSU) vs. Munoz-Giron/Stampfli (FGCU) | 6-3, dnf |

**Records:** Florida State 2-1; Florida Gulf Coast 1-6

## #34 Florida State def. Florida A&M, 4-1 February 14, 2015 Tallahassee, Fla. (Indoor)

### Singles (4,5,6,3,1)

- |  |               |
|--|---------------|
| 1. #81 Borthwick (FSU) def. Alexis Dean (FAMU)   | 6-0, 6-1      |
| 2. Cartwright (FSU) vs. Symone Townsend (FAMU)   | 6-1, 5-1, dnf |
| 3. Castaneda (FSU) def. Shantal Blackwood (FAMU) | 6-1, 6-0      |
| 4. Noi (FSU) def. Dominique Henry (FAMU)         | 6-0, 6-0      |
| 5. Vriens (FSU) def. Arrice Robinson (FAMU)      | 6-0, 6-0      |
| 6. Elysa Ortiz (FAMU) def. Phillips (FSU)        | 6-1, 6-1      |

### Doubles

Not Played

**Records:** Florida State 3-1; Florida A&M 0-4

**Notes:** Singles First; Doubles Not Played

## #2 Florida def. #34 Florida State, 4-3 February 18, 2015 Tallahassee, Fla. (Speicher)

### Singles (6,1,2,3,5,4)

- |   |               |
|---|---------------|
| 1. #6 Brooke Austin (UF) def. #81 Borthwick (FSU) | 6-3, 6-3      |
| 2. Cartwright (FSU) def. #3 Josie Kuhlman (UF)    | 6-2, 6-3      |
| 3. Noi (FSU) def. #13 Brianna Morgan (UF)         | 7-5, 6-4      |
| 4. #44 Kourtney Keegan (UF) def. Castaneda (FSU)  | 4-6, 6-3, 7-5 |
| 5. #91 Peggy Porter (UF) def. Fanning (FSU)       | 7-5, 7-5      |
| 6. Schippers (FSU) def. Stefani Stojic (UF)       | 6-2, 6-2      |

### Doubles (1,3)

- |   |          |
|---|----------|
| 1. #4 Austin/Keegan (UF) def. Borthwick/Fanning (FSU)           | 8-2      |
| 2. Cartwright/Castaneda (FSU) vs. #9 Kuhlman/Porter (UF)        | 3-6, dnf |
| 3. Belinda Woolcock/Spencer Liang (UF) def. Noi/Schippers (FSU) | 8-3      |

**Records:** Florida State 3-2; Florida 6-1

## #34 Florida State def. Air Force, 6-1 February 21, 2015 Tallahassee, Fla. (Speicher)

### Singles (2,4,5,6,3,1)

- |  |                      |
|--|----------------------|
| 1. #81 Borthwick (FSU) def. Natasha Rizvi (AF) | 6-2, 7-6 (6)         |
| 2. Cartwright (FSU) def. Mary Meyers (AF)      | 6-0, 6-0             |
| 3. Chloe Forlini (AF) def. Noi (FSU)           | 7-5, 1-6, 1-0 (10-8) |
| 4. Castaneda (FSU) def. Tracy Landram (AF)     | 6-0, 6-1             |
| 5. Schippers (FSU) def. Lily Forlini (AF)      | 6-2, 6-0             |
| 6. Fanning (FSU) def. Carley Hatcliff (AF)     | 6-4, 6-1             |

### Doubles (2,1)

- |   |          |
|---|----------|
| 1. Borthwick/Cartwright (FSU) def. Landram/Rizvi (AF)   | 6-4      |
| 2. Castaneda/Noi (FSU) def. Forlini/Meyers (AF)         | 6-1      |
| 3. Rush/Schippers (FSU) vs. Chloe Forlini/Hatcliff (AF) | 6-5, dnf |

**Records:** Florida State 4-2; Air Force 3-3

**Notes:** Military Appreciation Day





#34 Florida State def. Mercer, 4-0  
February 21, 2015  
Tallahassee, Fla. (Speicher)

**Singles (6,1,2)**

- |  |               |
|--|---------------|
| 1. #81 Borthwick (FSU) def. Xandra Fougner (MER) | 6-0, 6-1      |
| 2. Cartwright (FSU) def. Grace Korta (MER)       | 6-0, 6-1      |
| 3. Castaneda (FSU) vs. Haley Powell (MER)        | 6-1, 3-0, dnf |
| 4. Noi (FSU) vs. Roxy Bartz (MER)                | 6-1, 1-2, dnf |
| 5. Schippers (FSU) vs. Liza Klyachkin (MER)      | 6-0, 4-0, dnf |
| 6. Fanning (FSU) def. Laura Kelly (MER)          | 6-0, 6-0      |

**Doubles (3,2)**

- |   |          |
|---|----------|
| 1. Borthwick/Fanning (FSU) vs. Bartz/Kortz (MER)  | 6-4, dnf |
| 2. Cartwright/Castaneda (FSU) def. Fougner/Powell | 8-1      |
| 3. Rush/Vriens (FSU) def. Kelly/Klyachkin (MER)   | 8-2      |

**Records:** Florida State 5-2; Mercer 3-6

**Notes:** Military Appreciation Day

#14 Clemson def. #52 Florida State, 4-3  
February 27, 2015  
Tallahassee, Fla. (Speicher)

**Singles (6,3,4,2,1,5)**

- |  |                   |
|--|-------------------|
| 1. #20 Joana Eidukonyte (CU) def. #101 Borthwick (FSU) | 7-5, 7-5          |
| 2. #58 Romy Koelzer (CU) def. #73 Cartwright (FSU)     | 7-6 (7), 6-1      |
| 3. Castaneda (FSU) def. #82 Beatrice Gumulya (CU)      | 6-2, 6-4          |
| 4. Rompies (CU) def. #83 Noi (FSU)                     | 6-4, 6-4          |
| 5. Fanning (FSU) def. #119 Tristen Dewar (CU)          | 1-6, 7-6 (5), 6-4 |
| 6. Schippers (FSU) def. Daniela Ruiz (CU)              | 6-3, 6-2          |

**Doubles (3,1)**

- |  |          |
|--|----------|
| 1. #1 Gumulya/Rompies (CU) def. Borthwick/Cartwright (FSU) | 8-5      |
| 2. #53 Castaneda/Fanning (FSU) vs. Dewar/Koelzer (CU)      | 7-6, dnf |
| 3. Eidukonyte/Ruiz (CU) def. Noi/Rush (FSU)                | 8-4      |

**Records:** Florida State 5-3; Clemson 7-4

#52 Florida State def. #53 Wake Forest, 7-0  
March 1, 2015  
Tallahassee, Fla. (Speicher)

**Singles (5,2,4,3,6,1)**

- |   |                          |
|---|--------------------------|
| 1. #101 Borthwick (FSU) def. Xue Zhang (WF)       | 6-1, 3-6, 6-2            |
| 2. #73 Cartwright (FSU) def. Andrea Retolaza (WF) | 6-3, 6-1                 |
| 3. Castaneda (FSU) def. Samantha Asch (WF)        | 6-0, 2-6, 6-2            |
| 4. #83 Noi (FSU) def. Luisa Fernandez (WF)        | 6-4, 6-4                 |
| 5. Fanning (FSU) def. Kasey Gardiner (WF)         | 6-0, 6-3                 |
| 6. Schippers (FSU) def. Karen Forman (WF)         | 3-6, 7-6 (6), 1-0 (10-6) |

**Doubles (1,3)**

- |   |          |
|---|----------|
| 1. Borthwick/Cartwright (FSU) def. Retolaza/Zhang (WF)        | 8-0      |
| 2. #53 Castaneda/Fanning (FSU) vs. Gardiner/Kimmy Guerin (WF) | 7-6, dnf |
| 3. Noi/Rush (FSU) def. Asch/Fernandez (WF)                    | 8-4      |

**Records:** Florida State 6-3; Wake Forest 9-5

#49 Virginia Tech def. #57 Florida State, 4-2  
March 7, 2015  
Blacksburg, Va. (Burrows-Burleson Tennis Ctr.)

**Singles (2,3,1,5,4)**

- |  |                    |
|--|--------------------|
| 1. #101 Borthwick (FSU) def. #81 Ilinca Stoica (VT)  | 7-6 (4), 6-1       |
| 2. Francesca Fusinato (VT) def. #73 Cartwright (FSU) | 6-1, 6-0           |
| 3. #104 Carolina Dexhalet (VT) def. Castaneda (FSU)  | 6-4, 6-2           |
| 4. Elena Cerezo-Codina (VT) def. #83 Noi (FSU)       | 3-6, 6-3, 6-3      |
| 5. Kelly Williford (VT) def. Fanning (FSU)           | 6-4, 6-4           |
| 6. Schippers (FSU) vs. Sansitha Nandakumar (VT)      | 2-6, 6-3, 2-4, dnf |

**Doubles (3,2,1)**

- |   |     |
|---|-----|
| 1. Borthwick/Fanning (FSU) def. Fusinato/Raluca Mita (VT) | 8-6 |
| 2. #53 Castaneda/Fanning (FSU) def. Stoica/Williford (VT) | 8-4 |
| 3. #52 Cerezo-Codina/Nandakumar (VT) def. Noi/Rush (FSU)  | 8-5 |

**Records:** Florida State 6-4; Virginia Tech 8-4

#5 Virginia def. #57 Florida State, 6-1  
March 8, 2015  
Charlottesville, Va. (Boar's Head Sports Club)

**Singles (4,3,1,2,5,6)**

- |  |              |
|--|--------------|
| 1. #1 Julia Elbaba (VA) def. #101 Borthwick (FSU)      | 6-1, 6-1     |
| 2. #32 Danielle Collins (VA) def. #73 Cartwright (FSU) | 6-3, 6-2     |
| 3. #27 Stephanie Nauta (VA) def. #83 Noi (FSU)         | 6-2, 6-2     |
| 4. Castaneda (FSU) def. Skylar Morton (VA)             | 7-5, 6-4     |
| 5. Maci Epstein (VA) def. Fanning (FSU)                | 6-3, ret.    |
| 6. Cassie Mercer (VA) def. Schippers (FSU)             | 6-3, 7-6 (3) |

**Doubles (3,1)**

- |   |          |
|---|----------|
| 1. Collins/Nauta (VA) def. Borthwick/Cartwright (VA)      | 8-2      |
| 2. #53 Castaneda/Fanning (FSU) vs. #23 Mercer/Morton (VA) | 4-5, dnf |
| 3. Elbaba/Epstein (VA) def. Noi/Rush (FSU)                | 8-1      |

**Records:** Florida State 6-5; Virginia 10-2

#72 Florida State def. USF, 6-1  
March 12, 2015  
Tampa, Fla. (USF Varsity Tennis Courts)

**Singles (1,6,3,2,5,4)**

- |   |                      |
|---|----------------------|
| 1. #99 Borthwick (FSU) def. Olaya Garrido-Rivas (USF) | 6-2, 6-3             |
| 2. #89 Cartwright (FSU) def. Vera Bessonova (USF)     | 6-4, 6-3             |
| 3. #114 Noi (FSU) def. Jessica Cortes (USF)           | 6-2, 6-3             |
| 4. Olga Martinez (USF) def. Castaneda (FSU)           | 5-7, 7-5, 1-0 (10-5) |
| 5. Vriens (FSU) def. Juliana Cardosa (USF)            | 7-6 (6), 6-1         |
| 6. Schippers (FSU) def. Laura Argente (USF)           | 6-2, 6-2             |

**Doubles (3,2)**

- |  |          |
|--|----------|
| 1. Borthwick/Cartwright (FSU) vs. Cortes/Garrido-Rivas (USF) | 5-3, dnf |
| 2. #54 Castaneda/Fanning (FSU) def. Bessonova/Martinez (USF) | 6-3      |
| 3. Noi/Schippers (FSU) def. Cardosa/Hailey Grillo (USF)      | 6-3      |

**Records:** Florida State 7-5; USF 2-8





## #67 Florida State def. #57 Georgia Tech, 4-3 March 17, 2015 Atlanta, Ga. (Ken Byers Tennis Complex)

### Singles (1,2,6,4,5,3)

- |  |                   |
|--|-------------------|
| 1. #99 Borthwick (FSU) def. #92 Johnnise Renaud (GT) | 6-0, 6-4          |
| 2. #64 Paige Hourigan (GT) def. #89 Cartwright (FSU) | 6-2, 6-2          |
| 3. #114 Noi (FSU) def. Natasha Prokhnevskaya (GT)    | 7-6 (2), 7-6 (11) |
| 4. Castaneda (FSU) def. Kendal Woodard (GT)          | 6-4, 7-5          |
| 5. Fanning (FSU) def. Megan Kurey (GT)               | 3-6, 6-3, 7-6 (3) |
| 6. Alexis Prokopiuk (GT) def. Schippers (FSU)        | 7-6 (3), 6-0      |

### Doubles (2,3,1)

- |  |         |
|--|---------|
| 1. #35 Hourigan/Woodard (GT) def. Borthwick/Cartwright (FSU)           | 8-7 (5) |
| 2. #54 Castaneda/Fanning (FSU) def. #61 Rasheeda McAdoo/Prokopiuk (GT) | 8-6     |
| 3. Prokhnevskaya/Renaud (GT) def. Noi/Schippers (FSU)                  | 8-7 (4) |

**Records:** Florida State 8-5; Georgia Tech 5-6

## #32 Notre Dame def. #67 Florida State, 4-3 March 20, 2015 Tallahassee, Fla. (Speicher)

### Singles (3,6,1,5,2,4)

- |   |              |
|---|--------------|
| 1. #99 Borthwick (FSU) def. Quinn Gleason (ND)    | 6-2, 6-2     |
| 2. Monica Robinson (ND) def. #89 Cartwright (FSU) | 7-5, 6-3     |
| 3. #114 Noi (FSU) def. Julia Vrabel (ND)          | 6-3, 6-2     |
| 4. Mary Closs (ND) def. Castaneda (FSU)           | 7-6 (2), 6-3 |
| 5. Allison Miller (ND) def. Fanning (FSU)         | 6-2, 6-2     |
| 6. Schippers (FSU) def. Jane Fennelly (ND)        | 6-2, 6-3     |

### Doubles (1,2,3)

- |  |     |
|--|-----|
| 1. #21 Gleason/Robinson (ND) def. Borthwick/Cartwright (FSU) | 8-0 |
| 2. #54 Castaneda/Fanning (FSU) def. #55 Miller/Vrabel (ND)   | 8-2 |
| 3. Closs/Fennelly (ND) def. Noi/Vriens (FSU)                 | 8-3 |

**Records:** Florida State 8-6; Notre Dame 10-5

## #67 Florida State def. NC State, 5-2 March 22, 2015 Tallahassee, Fla. (Speicher)

### Singles (4,2,1,5,3,6)

- |  |                       |
|--|-----------------------|
| 1. #99 Borthwick (FSU) def. Liza Fieldsend (NCS) | 6-3, 6-3              |
| 2. #89 Cartwright (FSU) def. Elisha Hande (NCS)  | 6-3, 6-1              |
| 3. Nicole Martinez (NCS) def. #114 Noi (FSU)     | 3-6, 6-3, 1-0 (10-8)  |
| 4. Castaneda (FSU) def. Sophie Nelson (NCS)      | 6-2, 6-0              |
| 5. Fanning (FSU) def. Tayla Stenta (NCS)         | 7-5, 6-1              |
| 6. Natalia Janowicz (NCS) def. Rush (FSU)        | 5-7, 6-3, 1-0 (12-10) |

### Doubles (2,1)

- |  |          |
|--|----------|
| 1. #54 Castaneda/Fanning (FSU) def. Martinez/Nelson (NCS)    | 8-3      |
| 2. Borthwick/Noi (FSU) def. #77 Hande/Joanna Nalborska (NCS) | 8-2      |
| 3. Cartwright/Vriens (FSU) vs. Fieldsend/Janowicz (NCS)      | 7-6, dnf |

**Records:** Florida State 9-6; NC State 9-8

## #67 Florida State def. Florida A&M, 4-0 March 22, 2015 Tallahassee, Fla. (Indoor)

### Singles (3,1,2)

- |  |               |
|--|---------------|
| 1. #99 Borthwick (FSU) def. Symone Townsend (FAMU) | 6-0, 6-0      |
| 2. Castaneda (FSU) def. Alexis Dean (FAMU)         | 6-1, 6-1      |
| 3. #114 Noi (FSU) def. Shantal Blackwood (FAMU)    | 6-0, 6-0      |
| 4. Fanning (FSU) vs. Dominique Henry (FAMU)        | 6-1, 5-0, dnf |
| 5. Schippers (FSU) vs. Arrice Robinson (FAMU)      | 6-2, 3-1, dnf |
| 6. Rush (FSU) vs. Elysa Ortiz (FAMU)               | 6-0, 5-1, dnf |

### Doubles (1,2)

- |   |          |
|---|----------|
| 1. Borthwick/Noi (FSU) def. Ortiz/Townsend (FAMU)             | 6-0      |
| 2. #54 Castaneda/Fanning (FSU) def. Blackwood/Robinson (FAMU) | 6-2      |
| 3. Rush/Schippers (FSU) vs. Dean/Henry (FAMU)                 | 5-2, dnf |

**Records:** Florida State 10-6; Florida A&M 6-9

## #65 Boston College def. #61 Florida State, 4-3 March 27, 2015 Chestnut Hill, Mass. (Flynn Complex & Rec.)

### Singles

- |   |                      |
|---|----------------------|
| 1. Borthwick (FSU) def. Jessica Wacnik (BC) | 7-5, 7-6 (5)         |
| 2. Lexi Borr (BC) def. Cartwright (FSU)     | 6-2, 6-3             |
| 3. Asiya Dair (BC) def. Noi (FSU)           | 6-1, 7-6 (8)         |
| 4. Castaneda (FSU) def. Katya Vasilyev (BC) | 2-6, 6-2, 6-2        |
| 5. Emily Safron (BC) def. Fanning (FSU)     | 6-4, 6-4             |
| 6. Schippers (FSU) def. Heini Salonen (BC)  | 3-6, 6-2, 1-0 (10-8) |

### Doubles

- |  |         |
|--|---------|
| 1. Borr/Wacnik (BC) def. Castaneda/Fanning (FSU)     | 8-6     |
| 2. Borthwick/Noi (FSU) def. Dair/Jennifer Ren (BC)   | 8-3     |
| 3. Safron/Vasilyev (BC) def. Cartwright/Vriens (FSU) | 8-7 (4) |

**Records:** Florida State 10-7; Boston College 10-7

## #61 Florida State def. Syracuse, 7-0 March 29, 2015 Tallahassee, Fla. (Speicher)

### Singles (3,4,6,1,2,5)

- |  |               |
|--|---------------|
| 1. #93 Borthwick (FSU) def. Amanda Rodgers (SU)    | 6-2, 6-2      |
| 2. #102 Cartwright (FSU) def. Valeria Salazar (SU) | 7-6 (5), 7-5  |
| 3. #117 Noi (FSU) def. Rhiann Newborn (SU)         | 6-2, 6-2      |
| 4. Castaneda (FSU) def. Breanna Bachini (SU)       | 6-4, 6-1      |
| 5. Fanning (FSU) def. Komal Safdar (SU)            | 3-6, 6-3, 6-4 |
| 6. Schippers (FSU) def. Nicole Mitchell (SU)       | 6-2, 6-2      |

### Doubles (3,2)

- |  |          |
|--|----------|
| 1. Borthwick/Noi (FSU) vs. #59 Safdar/Salazar (SU)       | 2-1, dnf |
| 2. #40 Castaneda/Fanning (FSU) def. Newborn/Rodgers (SU) | 8-2      |
| 3. Cartwright/Vriens (FSU) def. Bachini/Mitchell (SU)    | 8-0      |

**Records:** Florida State 11-7; Syracuse 7-9





**#2 North Carolina def. #66 Florida State, 5-2**  
**April 2, 2015**  
**Tallahassee, Fla. (Speicher)**

**Singles (1,4,2,6,3,5)**

1. #9 Jamie Loeb (UNC) def. #93 Borthwick (FSU)	6-4, 6-3
2. #17 Hayley Carter (UNC) def. #102 Cartwright (FSU)	6-1, 6-3
3. #18 Caroline Price (UNC) def. #117 Noi (FSU)	7-5, 6-4
4. Castaneda (FSU) def. #72 Whitney Kay (UNC)	6-3, 6-3
5. Schippers (FSU) def. #78 Ashley Dai (UNC)	7-5, 6-3
6. Kate Vialle (UNC) def. Rush (FSU)	6-2, 6-3

**Doubles (2,3,1)**

1. #13 Loeb/Price (UNC) def. #40 Castaneda/Fanning (FSU)	8-5
2. #33 Carter/Kay (UNC) def. Borthwick/Noi (FSU)	8-5
3. Cartwright/Vriens (UNC) def. #34 Dai/Vialle (UNC)	8-3

**Records:** Florida State 11-8; North Carolina 22-0

**#24 Duke def. #66 Florida State, 4-0**  
**April 4, 2015**  
**Tallahassee, Fla. (Speicher)**

**Singles (2,3,1)**

1. Beatrice Capra (DU) def. #93 Borthwick (FSU)	6-1, 6-4
2. #38 Ester Goldfeld (DU) def. #102 Cartwright (FSU)	6-3, 6-0
3. #55 Samantha Harris (DU) def. #117 Noi (FSU)	6-4, 6-4
4. Castaneda (FSU) vs. #109 Rachel Kahan (DU)	3-6, 6-1, 1-0, dnf
5. Schippers (FSU) vs. Chalena Scholl (DU)	7-6 (2), 2-2, dnf
6. Vriens (FSU) vs. Annie Mulholland (DU)	6-4, 2-3, dnf

**Doubles (1,3)**

1. Harris/Mulholland (DU) def. Borthwick/Noi (FSU)	8-6
2. #40 Castaneda/Fanning (FSU) vs. Goldfeld/Alyssa Smith (DU)	6-5, dnf
3. Capra/Kahan (DU) def. Cartwright/Vriens (FSU)	8-6

**Records:** Florida State 11-9; Duke 13-7

**#69 Florida State def. Louisville, 4-1**  
**April 10, 2015**  
**Louisville, Ky. (Bass Rudd Tennis Center)**

**Singles (1,5,2,3)**

1. #89 Borthwick (FSU) def. Elle Stokes (UL)	6-3, 6-1
2. Manuela Velasquez (UL) def. #111 Cartwright (FSU)	6-3, 6-2
3. Noi (FSU) def. Jessie Lynn Paul (UL)	6-3, 6-2
4. Castaneda (FSU) vs. Olivia Boesing (UL)	6-1, 5-5, dnf
5. Schippers (FSU) def. Cassie Pough (UL)	6-1, 6-3
6. Fanning (FSU) vs. Chloe Willetts (UL)	7-6 (3), 3-2, dnf

**Doubles (1,3)**

1. Borthwick/Noi (FSU) def. Stokes/Velasquez (UL)	8-1
2. #60 Castaneda/Fanning (FSU) vs. Boesing/Willetts (UL)	5-5, dnf
3. Cartwright/Rush (FSU) def. Paul/Pough (UL)	8-2

**Records:** Florida State 12-9; Louisville 11-13

**#69 Florida State def. Pittsburgh, 6-1**  
**April 12, 2015**  
**Pittsburgh, Pa. (Alpha Tennis & Fitness Center)**

**Singles (6,3,5,1,2,4)**

1. Lolade Ogungbesan (UP) def. #89 Borthwick (FSU)	7-6, 2-6, 1-0 (10-6)
2. #111 Cartwright (FSU) def. Audrey Ann Blakely (UP)	1-6, 7-5, 6-3
3. Noi (FSU) def. Amber Washington (UP)	6-2, 6-3
4. Castaneda (FSU) def. Callie Frey (UP)	4-6, 6-4, 7-5
5. Schippers (FSU) def. Katherine Castro (UP)	1-6, 6-1, 6-2
6. Fanning (FSU) def. Amanda Wickman (UP)	6-1, 6-0

**Doubles (1,3)**

1. Borthwick/Noi (FSU) def. Castro/Ogungbesan (UP)	8-2
2. #60 Castaneda/Fanning (FSU) vs. Blakely/Frey (UP)	7-4, dnf
3. Cartwright/Vriens (FSU) def. Washington/Molly Wickman (UP)	8-6

**Records:** Florida State 13-9; Pittsburgh 2-15

**#16 Miami def. #70 Florida State, 5-2**  
**April 18, 2015**  
**Coral Gables, Fla. (Neil Schiff Tennis Center)**

**Singles (4,2,6,1,3,5)**

1. #8 Stephanie Wagner (UM) def. #80 Borthwick (FSU)	7-5, 6-3
2. #38 Sinead Lohan (UM) def. #119 Cartwright (FSU)	6-3, 6-4
3. Castaneda (FSU) def. #76 Clementina Riobueno (UM)	7-6 (5), 6-2
4. Silvia Fuentes (UM) def. Schippers (FSU)	6-2, 6-0
5. #115 Lina Lileikite (UM) def. Fanning (FSU)	7-6 (5), 1-6, 1-0 (10-2)
6. Monique Albuquerque (UM) def. Vriens (FSU)	4-6, 6-0, 6-1

**Doubles (3,1)**

1. Borthwick/Noi (FSU) def. #44 Albuquerque/Riobueno (UM)	8-4
2. #54 Castaneda/Fanning (FSU) vs. Fuentes/Wagner (UM)	7-7, dnf
3. Cartwright/Vriens (FSU) def. #71 Lileikite/Wendy Zhang (UM)	8-3

**Records:** Florida State 13-10; Miami 15-5

**#73 Florida State def. Pittsburgh, 4-0**  
**April 22, 2015**  
**Cary, N.C. (Cary Tennis Park)**

**Singles (5,6,3)**

1. #88 Borthwick (FSU) vs. Lolade Ogungbesan (UP)	6-2, 2-1, dnf
2. #118 Cartwright (FSU) vs. Audrey Ann Blakely (UP)	4-6, 1-2, dnf
3. Noi (FSU) def. Amber Washington (UP)	6-4, 6-0
4. #116 Castaneda (FSU) vs. Callie Frey (UP)	6-1, 4-2, dnf
5. Schippers (FSU) def. Katherine Castro (UP)	6-1, 6-0
6. Fanning (FSU) def. Molly Wickman (UP)	6-2, 6-0

**Doubles (1,3)**

1. #69 Borthwick/Noi (FSU) def. Castro/Ogungbesan (UP)	8-4
2. #63 Castaneda/Fanning (FSU) vs. Blakely/Frey (UP)	7-6, dnf
3. Cartwright/Vriens (FSU) def. Washington/Wickman (UP)	8-3

**Records:** Florida State 14-10; Pittsburgh 2-18

**Notes:** ACC Tournament First Round



**#73 Florida State def. #36 Notre Dame, 4-3**  
**April 23, 2015**  
**Cary, N.C. (Cary Tennis Park)**

**Singles (3,1,6,4,2,5)**

- |   |               |
|---|---------------|
| 1. #88 Borthwick (FSU) def. Quinn Gleason (ND)    | 6-0, 6-4      |
| 2. Monica Robinson (ND) def. #118 Cartwright (ND) | 6-4, 6-3      |
| 3. Noi (FSU) def. Julie Vrabel (ND)               | 6-1, 6-1      |
| 4. Mary Closs (ND) def. #116 Castaneda (FSU)      | 7-5, 6-1      |
| 5. Vriens (FSU) def. Allison Miller (ND)          | 3-6, 6-4, 6-4 |
| 6. Schippers (FSU) def. Jane Fennelly (ND)        | 6-3, 6-2      |

**Doubles (1,2,3)**

- |   |     |
|---|-----|
| 1. #26 Gleason/Robinson (ND) def. #69 Borthwick/Noi (FSU) | 8-2 |
| 2. #63 Castaneda/Fanning (FSU) def. Miller/Vrabel (ND)    | 8-4 |
| 3. Closs/Fennelly (ND) def. Cartwright/Vriens (FSU)       | 8-4 |

**Records:** Florida State 15-10; Notre Dame 14-10

**Notes:** ACC Tournament Second Round

**#73 Florida State def. #15 Miami, 4-3**  
**April 24, 2015**  
**Cary, N.C. (Cary Tennis Park)**

**Singles (1,5,4,6,2,3)**

- |   |                   |
|---|-------------------|
| 1. #10 Stephanie Wagner (UM) def. #88 Borthwick (FSU) | 6-2, 6-2          |
| 2. #40 Sinead Lohan (UM) def. #118 Cartwright (FSU)   | 6-4, 7-6 (4)      |
| 3. Noi (FSU) def. #74 Clementina Riobueno (UM)        | 7-6 (5), 1-6, 6-2 |
| 4. #116 Castaneda (FSU) def. Silvia Fuentes (UM)      | 6-3, 6-4          |
| 5. #111 Lina Lileikite (UM) def. Schippers (FSU)      | 6-2, 6-2          |
| 6. Fanning (FSU) def. Monique Albuquerque (UM)        | 6-4, 6-4          |

**Doubles (2,1,3)**

- |   |         |
|---|---------|
| 1. Lohan/Wagner (UM) def. #69 Borthwick/Noi (FSU)                 | 8-7 (3) |
| 2. #63 Castaneda/Fanning (FSU) def. #51 Albuquerque/Riobueno (UM) | 8-2     |
| 3. Cartwright/Vriens (FSU) def. #78 Lileikite/Wendy Zhang (UM)    | 8-6     |

**Records:** Florida State 16-10; Miami 16-6

**Notes:** ACC Tournament Quarterfinals

**#27 Georgia Tech def. #73 Florida State, 4-3**  
**April 25, 2015**  
**Chapel Hill, N.C. (Cone-Kenfield Tennis Center)**

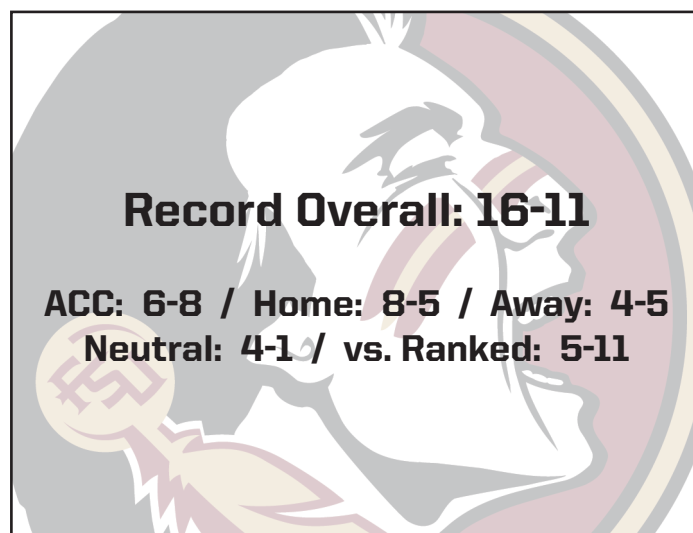
**Singles (2,6,4,1,3,5)**

- |   |                   |
|---|-------------------|
| 1. #88 Borthwick (FSU) def. #102 Johnnise Renaud (GT) | 4-6, 7-5, 6-3     |
| 2. #53 Paige Hourigan (GT) def. Noi (FSU)             | 6-3, 6-2          |
| 3. #116 Castaneda (FSU) def. Kendal Woodard (GT)      | 7-5, 6-7 (3), 6-1 |
| 4. Rasheeda McAdoo (GT) def. Vriens (FSU)             | 1-6, 6-3, 6-4     |
| 5. Megan Kurey (GT) def. Schippers (FSU)              | 6-2, 3-6, 7-5     |
| 6. Fanning (FSU) def. Alexis Prokopuik (GT)           | 6-1, 3-6, 6-0     |

**Doubles (1,2,3)**

- |   |         |
|---|---------|
| 1. #16 Hourigan/Woodard (GT) def. Borthwick/Noi (FSU)           | 8-0     |
| 2. Castaneda/Fanning (FSU) def. Alexa Anton-Ohlmeier/Kurey (GT) | 8-6     |
| 3. McAdoo/Renaud (GT) def. Cartwright/Vriens (FSU)              | 8-7 (5) |

**Records:** Florida State 16-11; Georgia Tech 16-8

**Notes:** ACC Tournament Semifinals


Singles Overall			Doubles Overall		
		Dual			Dual
D. Borthwick	21-15	15-8	Borthwick/Cartwright	6-8	3-4
K. Cartwright	14-19	9-13	Borthwick/Fanning	5-4	2-2
G. Castaneda	26-10	16-6	Borthwick/Noi	7-5	7-5
E. Fanning	21-14	12-7	Cartwright/Castaneda	2-2	2-0
Y. Noi	23-15	15-9	Cartwright/Rush	1-0	1-0
K. Phillips	0-1	0-1	Cartwright/Vriens	6-4	6-4
L. Rush	6-7	0-3	Castaneda/Fanning	15-6	10-2
D. Schippers	21-12	14-6	Castaneda/Noi	1-0	1-0
M. Vriens	3-2	3-2	Noi/Rush	2-5	1-3
Totals	135-95	84-55	Noi/Schippers	3-5	2-3
			Noi/Vriens	1-2	0-1
			Rush/Schippers	2-4	0-0
			Rush/Vriens	1-0	1-0
			Totals	52-45	36-24





## VS. 2016 OPPONENTS

Team	Record	First	Last	Team	Record	First	Last	Team	Record	First	Last
Boston College	10-2	2006	2015	Mississippi State	4-3	1984	1994	Virginia	23-10	1992	2015
Clemson	9-23	1982	2015	North Carolina	15-25	1982	2015	Virginia Tech	16-2	1985	2015
Duke	5-29	1983	2015	NC State	22-4	1992	2015	Wake Forest	18-19	1985	2015
Florida	1-39	1982	2015	North Florida	8-1	1985	2014	First Time Playing: Navy, Old Dominion, Portland, South Carolina State			
Florida A&M	14-0	1982	2015	Notre Dame	1-3	1996	2015				
Georgia Tech	19-13	1985	2015	Pitt	3-0	2014	2015				
Louisville	4-0	1982	2015	Syracuse	2-1	2014	2015				
Miami (FL)	6-26	1982	2015	Tulane	8-4	1982	2005				

## VS. ALL OPPONENTS

Team	Record	First	Last	Team	Record	First	Last	Team	Record	First	Last																																			
Air Force	1-0	2015	2015	Michigan State	3-0	2001	2002	Washington	0-1	2011	2011																																			
Alabama	7-5	1983	2005	Ole Miss	2-7	1982	2012	Washington State	0-1	2012	2012																																			
Arizona	1-3	1990	2014	Mississippi U. for Women	1-0	1982	1982	Wichita State	1-0	1985	1985																																			
Arizona State	0-1	2009	2009	Missouri State	1-0	1986	1986	William & Mary	1-0	1987	1987																																			
Auburn	17-3	1982	2014	New Mexico	3-0	1984	1990	Wisconsin	1-4	1986	1992																																			
Baylor	5-5	1986	2013	UNC Greensboro	1-0	2009	2009	Yale	0-1	1989	1989																																			
Bethune-Cookman	1-0	2006	2006	North Texas State	1-0	1982	1982	<div>Coaches' Cumulative Records</div> <table><thead><tr><th>Name</th><th>Tenure</th><th>Years</th><th>Record</th><th>Pct.</th></tr></thead><tbody><tr><td>Anne Davis</td><td>1982-86</td><td>5</td><td>86-62</td><td>.581</td></tr><tr><td>Patti Henderson</td><td>1987-91</td><td>5</td><td>67-51</td><td>.568</td></tr><tr><td>Alice Reen</td><td>1992-96</td><td>5</td><td>60-50</td><td>.545</td></tr><tr><td>Lise Gergory</td><td>1997-04</td><td>8</td><td>115-82</td><td>.584</td></tr><tr><td>Jennifer Hyde</td><td>2005-Pres.</td><td>11</td><td>165-114</td><td>.591</td></tr><tr><td>5 Coaches</td><td>1982-Pres.</td><td>34</td><td>493-359</td><td>.579</td></tr></tbody></table>				Name	Tenure	Years	Record	Pct.	Anne Davis	1982-86	5	86-62	.581	Patti Henderson	1987-91	5	67-51	.568	Alice Reen	1992-96	5	60-50	.545	Lise Gergory	1997-04	8	115-82	.584	Jennifer Hyde	2005-Pres.	11	165-114	.591	5 Coaches	1982-Pres.	34	493-359	.579
Name	Tenure	Years	Record	Pct.																																										
Anne Davis	1982-86	5	86-62	.581																																										
Patti Henderson	1987-91	5	67-51	.568																																										
Alice Reen	1992-96	5	60-50	.545																																										
Lise Gergory	1997-04	8	115-82	.584																																										
Jennifer Hyde	2005-Pres.	11	165-114	.591																																										
5 Coaches	1982-Pres.	34	493-359	.579																																										
California	0-1	1997	1997	Northwestern	0-6	1983	2010																																							
UC Irvine	0-1	1987	1987	Northwestern (La.)	1-0	1982	1982																																							
UC Santa Barbara	0-2	1987	1993	Ohio State	4-0	1982	2012																																							
College of Charleston	1-0	1983	1983	Oklahoma	1-0	1993	1993																																							
Columbia	1-0	1987	1987	Oklahoma State	1-2	1982	1984																																							
Flagler	2-2	1988	1992	Penn State	1-0	2004	2004																																							
Florida Atlantic	1-0	2002	2002	Pepperdine	2-1	2001	2012																																							
Florida Gulf Coast	1-0	2015	2015	Princeton	2-0	1982	2011																																							
Florida International	16-5	1989	2013	Purdue	3-0	1982	1987																																							
Florida JC	5-0	1983	1987	Rice	10-5	1983	2014																																							
Furman	4-0	1987	2009	Rollins	12-6	1982	1993																																							
Georgia	5-9	1982	2014	Samford	1-0	2008	2008																																							
Georgia Southern	9-0	1995	2006	San Diego	1-1	1995	2005																																							
Georgia State	7-0	1983	2013	San Diego State	3-0	2001	2005																																							
Harvard	2-0	1982	2002	Santa Fe	1-0	1990	1990																																							
Houston	5-6	1984	2007	South Alabama	8-7	1982	2003																																							
Illinois	6-1	1992	2010	South Carolina	2-13	1982	2010																																							
Indiana	0-3	1982	1988	SMU	3-3	1982	2011																																							
Iowa	3-1	1982	1999	Southern	1-0	2011	2011																																							
Jacksonville	8-0	1989	2009	Southern Miss	2-0	1999	1999																																							
Kansas	1-0	1999	1999	Stetson	9-0	1983	2014																																							
Kansas State	1-0	1989	1989	Tennessee	4-3	1983	2010																																							
Kentucky	0-1	1994	1994	UT-Chattanooga	1-0	1984	1984																																							
Lamar	1-0	1989	1989	Texas	0-3	1982	2008																																							
La. Lafayette	3-0	1982	1993	Texas A&M	2-0	1994	1995																																							
La. Monroe	6-0	1983	1991	TCU	2-5	1982	2012																																							
LSU	10-6	1982	2014	Trinity	1-0	1991	1991																																							
Louisiana Tech	2-0	1983	1990	Troy	3-0	2006	2013																																							
Loyola Marymount	1-0	2001	2001	UAB	4-0	1988	2014																																							
Lynn (Boca Raton)	1-0	1990	1990	UCLA	0-1	2007	2007																																							
Marquette	1-0	2001	2001	UCF	8-0	2002	2013																																							
Marshall	1-0	2004	2004	UNLV	2-0	2008	2013																																							
Maryland	21-3	1993	2014	USF	25-13	1982	2015																																							
Memphis	2-1	1985	2013	U.S. International	0-1	1990	1990																																							
Mercer	2-0	2014	2015	Utah	1-0	2000	2000																																							
Miami (OH)	1-1	1984	1987	Vanderbilt	2-10	1983	2002																																							
Michigan	4-0	1990	1993	VCU	0-1	2002	2002																																							



## ANNE DAVIS (1982-86)

CAREER RECORD: 86-62 (NCAA)

Was the first head coach in the women's tennis program's history...Davis earned Metro Conference

Coch of the Year honors in 1981...ranked in the top 20 in the nation during the 1982 preseason...former USF tennis standout who played on teams that finished a program high of 11th...led the Seminoles to their highest national finish by taking sixth place in the 1982 AIAW tournament.

### 1982

#### Record: 23-17

Nov. 5	Florida AGM	W	9-0
Nov. 6	South Carolina	L	2-7
Nov. 7	Oklahoma State	W	5-4
Nov. 8	TCU	W	6-3
Nov. 20	Tulane	W	9-0
Nov. 21	USF	W	5-4
Feb. 4	Florida AGM	W	8-0
Feb. 5	Rollins	L	2-7
Feb. 6	Florida	L	1-7
Feb. 7	LSU	W	6-3
Feb. 8	Clemson	W	5-4
Feb. 8	Auburn	W	9-0
Feb. 23	La. Lafayette	W	9-0
Feb. 24	Northwestern (La.)	W	7-0
Mar. 4	Miss. Univ. for Women	W	8-0
Mar. 4	North Carolina	W	6-3
Mar. 5	South Carolina	L	3-5
Mar. 6	Ole Miss	L	4-5
Mar. 8	Purdue	W	7-1
Mar. 9	Texas	L	0-8
Mar. 10	SMU	W	6-2
Mar. 11	TCU	L	4-5
Mar. 12	North Texas State	W	6-2
Mar. 19	Louisville	W	8-1
Mar. 20	Ohio State	W	9-0
Mar. 21	South Alabama	W	7-2
Mar. 22	Indiana	L	2-7
Mar. 23	Harvard	W	8-1
Mar. 24	Clemson	L	4-5
Mar. 25	USF	L	4-5
Mar. 26	Miami	L	2-7
Apr. 13	Florida	L	1-8
Apr. 17	Georgia	L	3-6
Apr. 18	Rollins	L	2-7
May 6	USF	L	4-5
May 26	North Carolina	L	1-8
May 27	Iowa	W	7-2
May 28	Georgia	W	5-4
May 29	Princeton	W	5-4
May 29	North Carolina	L	0-5

### 1983

#### Record: 18-8

N/A	Clemson	L	0-9
N/A	Tulane	W	5-4
Feb. 5	Stetson	W	7-2
Feb. 10	College of Charleston	W	9-0
Feb. 11	Auburn	W	8-1
Feb. 12	Florida JC	W	7-2
Feb. 26	Rollins	L	1-8
Feb. 27	Louisiana Tech	W	7-0
Mar. 2	La. Monroe	W	8-1
Mar. 3	Alabama	W	8-1
Mar. 4	Rice	L	3-6
Mar. 5	USF	W	5-4
Mar. 6	Duke	W	6-3
Mar. 17	Indiana	L	2-7
Mar. 19	Ohio State	W	9-0
Mar. 20	Iowa	W	7-2
Mar. 21	Georgia	W	6-3
Mar. 22	Georgia State	W	9-0
Mar. 23	Tennessee	W	6-3
Mar. 25	Northwestern	L	4-5
Mar. 26	Rollins	W	6-3
Mar. 27	Florida	L	3-6
Apr. 8	USF	L	3-6
Apr. 12	Florida	L	4-5
Apr. 15	Vanderbilt	W	8-1
Apr. 16	Alabama	W	8-1

### 1984

#### Record: 15-13

Jan. 28	Rollins	L	3-6
Feb. 3	Tennessee	W	8-1
Feb. 4	South Carolina	L	4-5
Feb. 5	Houston	L	4-5
Feb. 17	UT-Chattanooga	W	5-4
Feb. 18	Vanderbilt	W	8-0
Feb. 19	Auburn	W	7-2
Feb. 21	Florida JC	W	8-1
Feb. 24	Tulane	W	6-0
Feb. 26	Georgia	W	7-2
Feb. 29	La. Monroe	W	5-1
Mar. 1	Alabama	W	7-2
Mar. 1	Oklahoma State	L	4-5
Mar. 2	South Alabama	W	7-2
Mar. 7	Florida	L	2-7
Mar. 9	South Carolina	W	5-4
Mar. 10	Oklahoma State	L	4-5
Mar. 11	Georgia	W	6-3
Mar. 12	Ole Miss	L	2-5
Mar. 13	Mississippi State	W	9-0
Mar. 14	Rice	L	3-6
Mar. 15	New Mexico	W	5-1
Mar. 17	Miami (OH)	W	6-3
Mar. 23	Rollins	L	4-5
Mar. 24	Northwestern	L	1-8
Mar. 25	Florida	L	1-8
Apr. 6	Miami	L	3-6
Apr. 6	USF	L	3-6

### 1985

#### Record: 13-14

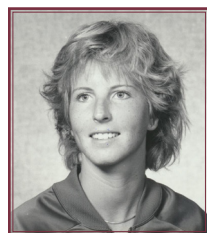
Nov. 16	Georgia Tech	W	6-1
Nov. 17	USF	L	1-8
Nov. 18	Alabama	W	6-3
Feb. 9	North Florida	W	7-2
Feb. 14	Florida JC	W	9-0
Feb. 16	Rollins	W	5-4
Feb. 17	Florida	L	1-8
Feb. 28	North Carolina	W	7-2
Mar. 1	LSU	L	2-7
Mar. 2	USF	L	0-8
Mar. 11	Wichita State	W	6-3
Mar. 14	Wake Forest	W	7-2
Mar. 16	Duke	L	4-5
Mar. 18	North Carolina	L	2-7
Mar. 19	TCU	L	3-6
Mar. 22	South Carolina	L	4-5
Mar. 23	Northwestern	L	3-6
Mar. 24	Georgia	W	5-4
Mar. 25	Florida	L	1-8
Mar. 29	USF	L	3-6
Mar. 30	Miami	L	1-8
Mar. 31	Rollins	W	7-2
Apr. 13	Ole Miss	L	2-6
Apr. 14	Auburn	W	8-1
Apr. 18	Memphis	W	9-0
Apr. 19	Tulane	L	4-5
Apr. 20	Virginia Tech	W	7-2

### 1986

#### Record: 17-10

Feb. 8	North Florida	W	6-3
Feb. 13	Florida JC	W	9-0
Feb. 15	Florida	L	1-8
Feb. 22	SMU	L	3-6
Feb. 27	Rollins	W	8-1
Feb. 28	Houston	L	3-6
Mar. 1	USF	W	5-4
Mar. 7	Alabama	W	6-3
Mar. 8	Auburn	W	7-2
Mar. 9	Florida	L	1-8
Mar. 10	Purdue	W	6-3
Mar. 11	Baylor	W	9-0
Mar. 12	Ole Miss	W	5-4
Mar. 14	South Alabama	L	2-7
Mar. 15	Missouri State	W	8-1
Mar. 16	TCU	L	3-6
Mar. 21	Clemson	L	0-9
Mar. 22	South Alabama	L	3-6
Mar. 24	Virginia Tech	W	9-0
Mar. 26	Georgia Tech	W	7-2
Mar. 27	Wisconsin	W	5-4
Apr. 4	Mississippi State	W	7-2
Apr. 6	Stetson	W	9-0
Apr. 11	USF	L	2-7
Apr. 13	Rollins	W	6-0
Apr. 17	Virginia Tech	W	8-1
Apr. 18	South Carolina	L	4-5





## PATTI HENDERSON (1987-91)

CAREER RECORD: 67-51

Only woman in Metro

Conference history to earn  
MVP honors as a student-

athlete and then conference coach of the year accolades...won two Metro Conference Team Championships in her four-year stint with the Seminoles...recruited and coached current Seminole head coach Jennifer Hyde...inducted into the Florida State Hall of Fame in 1992...during her four year playing career at FSU, she compiled a 68-36 singles record while accounting for 75 doubles wins...NCAA Championships qualifier in the doubles in 1985...first FSU women's tennis student-athlete to notch 20 singles wins in a season (1986)...was a graduate assistant for one year before taking the head coach position.

### 1987

#### Record: 11-15

Jan. 30	Vanderbilt	L	4-5
Jan. 31	Tennessee	L	4-5
Feb. 1	William & Mary	W	5-4
Feb. 8	South Carolina	L	0-5
Feb. 9	Auburn	W	5-4
Feb. 12	Florida JC	W	7-2
Feb. 13	North Florida	W	7-2
Feb. 14	Florida	L	0-9
Feb. 26	Mississippi State	L	4-5
Feb. 27	Furman	W	6-3
Mar. 9	Purdue	W	7-2
Mar. 12	Columbia	W	8-1
Mar. 15	USF	W	6-3
Mar. 17	Miami (OH)	L	4-5
Mar. 20	North Carolina	L	2-7
Mar. 21	Wake Forest	L	3-6
Mar. 23	Virginia Tech	W	8-1
Apr. 2	UC Irvine	L	3-6
Apr. 3	Rice	L	4-5
Apr. 4	UC Santa Barbara	L	2-7
Apr. 5	SMU	L	1-8
Apr. 8	Florida	L	0-9
Apr. 13	Rollins	L	3-6
Apr. 24	Louisville	W	7-2
Apr. 25	Memphis	W	9-0
Apr. 26	South Carolina	L	3-6

### 1988

#### Record: 13-12

Jan. 28	Florida	L	1-8
Jan. 29	Florida A&M	W	8-1
Jan. 30	UAB	W	7-2
Feb. 14	North Florida	L	3-6
Feb. 25	La. Monroe	W	6-3
Feb. 26	Houston	L	1-8

Feb. 27	Ole Miss	L	4-5
Mar. 4	Virginia Tech	W	5-4
Mar. 6	Rollins	W	6-3
Mar. 10	Auburn	L	3-6
Mar. 12	Baylor	W	9-0
Mar. 16	New Mexico	W	5-4
Mar. 17	South Carolina	L	1-7
Mar. 18	Indiana	L	1-8
Mar. 19	North Carolina	L	2-7
Mar. 22	Furman	W	9-0
Mar. 27	LSU	L	4-5
Apr. 1	Mississippi State	L	1-5
Apr. 4	Georgia State	W	9-0
Apr. 9	Stetson	W	8-1
Apr. 10	USF	W	5-4
Apr. 16	Flagler	L	2-7
Apr. 22	SMU	W	9-0
Apr. 23	Louisville	W	9-0
Apr. 24	South Carolina	L	0-6

### 1989

#### Record: 13-7

Oct. 14	Tulane	W	8-1
Oct. 16	USF	L	4-5
Feb. 1	Florida	L	0-9
Feb. 4	South Alabama	W	5-3
Feb. 18	Jacksonville	W	9-0
Feb. 23	La. Monroe	W	6-0
Feb. 25	Auburn	W	5-4
Feb. 26	South Alabama	L	3-6
Mar. 3	Florida International	W	9-0
Mar. 10	Flagler	L	4-5
Mar. 11	North Florida	W	6-3
Mar. 14	Ole Miss	L	3-6
Mar. 15	Kansas State	W	5-1
Mar. 22	Yale	L	4-5
Mar. 24	USF	W	6-3
Mar. 25	Wisconsin	L	1-8
Mar. 26	Rollins	W	6-3
Apr. 3	Clemson	W	5-4
Apr. 6	Lamar	W	9-0
Apr. 7	Houston	W	5-4

### 1990

#### Record: 17-8

Oct. 27	USF	W	7-1
Oct. 28	Rollins	W	8-1
Jan. 20	Santa Fe	W	9-0
Jan. 27	North Florida	W	8-1
Jan. 28	Florida	L	0-9
Feb. 2	U.S. International	L	3-6
Feb. 3	Arizona	L	4-5
Feb. 4	Rice	W	6-0
Feb. 18	South Alabama	W	7-1
Feb. 19	La. Monroe	W	7-0
Feb. 22	Houston	L	2-7
Feb. 24	Ole Miss	W	5-4
Feb. 26	Georgia Tech	W	7-1
Mar. 1	Louisiana Tech	W	7-2

Mar. 6	Florida International	W	8-1
Mar. 10	LSU	L	4-5
Mar. 11	Miami	L	1-8
Mar. 13	New Mexico	W	7-0
Mar. 21	USF	W	7-2
Mar. 22	Wisconsin	L	4-5
Mar. 24	Rollins	W	8-1
Mar. 25	Michigan	W	8-1
Apr. 7	Wake Forest	W	5-4
Apr. 8	South Carolina	L	2-6
Apr. 14	Lynn (Boca Raton)	W	8-1

### 1991

#### Record: 13-9

Feb. 1	Florida	L	0-9
Feb. 9	North Carolina	L	2-7
Feb. 10	Miami	L	4-5
Feb. 16	Rice	W	7-2
Feb. 17	Tulane	W	9-0
Feb. 18	LSU	W	5-4
Feb. 22	La. Monroe	W	9-0
Feb. 23	Auburn	W	7-2
Feb. 24	USF	W	9-0
Mar. 1	Alabama	W	6-3
Mar. 3	Michigan	W	7-2
Mar. 9	Rollins	W	9-0
Mar. 12	Wake Forest	L	4-5
Mar. 14	Mississippi State	W	7-2
Mar. 20	Trinity	W	7-2
Mar. 22	Houston	L	4-5
Mar. 24	TCU	L	3-6
Mar. 27	La. Lafayette	W	8-1
Mar. 29	Wisconsin	L	3-6
Mar. 30	Northwestern	L	2-7
Apr. 6	Flagler	W	7-2
Apr. 14	Duke	L	1-6



## ALICE REEN (1992-96)

CAREER RECORD: 60-50

Over five years, averaged  
12 victories per season...  
coached current Seminole  
head coach Jennifer Hyde...

led Florida State to its highest NCAA ranking in school history at the time (No. 17 - 1994)...was the head coach at the University of Arkansas before taking over in Tallahassee...graduate of the University of Georgia...led the Seminoles to their highest finish in Atlantic Coast Conference history, finishing in second place in 1994...named ACC Coach of the Year in 1994.

### 1992

#### Record: 13-10

Feb. 7	Northwestern	L	3-6
Feb. 8	Wisconsin	L	2-7
Feb. 9	Alabama	L	0-6
Feb. 14	Flagler	W	7-2



Feb. 18	Rollins	W	8-1
Feb. 28	Virginia	W	7-2
Feb. 29	Michigan	W	6-3
Mar. 1	USF	W	7-2
Mar. 3	NC State	W	9-0
Mar. 13	Miami	L	2-7
Mar. 14	SMU	W	5-3
Mar. 15	Mississippi State	L	4-5
Mar. 22	North Carolina	W	5-4
Mar. 23	Duke	L	1-8
Mar. 27	Georgia Tech	W	8-1
Apr. 3	Illinois	L	4-5
Apr. 4	South Alabama	W	6-1
Apr. 5	Florida International	W	6-3
Apr. 10	Georgia	L	3-6
Apr. 11	Clemson	L	3-6
Apr. 12	Wake Forest	W	5-4
Apr. 17	Virginia (ACC)	W	6-0
Apr. 18	Wake Forest (ACC)	L	2-5

**1993****Record: 13-9**

Jan. 24	Georgia Tech	W	8-1
Jan. 29	UC Santa Barbara	L	4-5
Jan. 30	Rice	L	4-5
Jan. 31	Arizona	L	2-6
Feb. 14	Florida International	W	8-1
Feb. 15	Miami	L	2-7
Feb. 20	Rollins	W	8-1
Feb. 27	Michigan	W	6-3
Feb. 28	USF	W	5-4
Mar. 6	Clemson	L	4-5
Mar. 7	North Carolina	W	7-2
Mar. 9	Wake Forest	L	4-5
Mar. 12	Oklahoma	W	6-3
Mar. 13	NC State	W	6-0
Mar. 18	Maryland	W	8-1
Mar. 22	Tennessee	L	3-6
Mar. 25	Virginia	W	5-4
Apr. 8	La. Lafayette	W	6-3
Apr. 17	Georgia	L	2-5
Apr. 18	South Alabama	W	5-4
Apr. 23	North Carolina (ACC)	W	5-3
Apr. 24	Clemson (ACC)	L	2-7

**1994****Record: 15-10**

Feb. 5	Georgia Tech	W	9-0
Feb. 11	Miami	L	4-5
Feb. 13	Florida	L	1-8
Feb. 20	Maryland	W	9-0
Feb. 25	Kentucky	L	1-7
Feb. 26	Tennessee	L	4-5
Mar. 5	USF	W	5-4
Mar. 7	Wake Forest	W	5-4
Mar. 11	Clemson	L	3-6
Mar. 12	Georgia	L	1-5
Mar. 13	NC State	W	7-2
Mar. 15	Virginia	W	6-3

Mar. 18	Mississippi State	W	5-1
Mar. 21	Rice	W	7-2
Mar. 22	Houston	W	5-1
Mar. 24	Texas	L	3-6
Mar. 26	Texas A&M	W	5-4
Apr. 2	Florida International	W	5-1
Apr. 9	North Carolina	W	7-2
Apr. 10	Duke	L	4-5
Apr. 16	South Alabama	W	7-2
Apr. 22	NC State (ACC)	W	5-1
Apr. 23	Clemson (ACC)	W	5-3
Apr. 24	Duke (ACC)	L	0-5
May 13	Arizona (NCAA)	L	3-5

**1995****Record: 11-10**

Feb. 11	Florida	L	1-7
Feb. 17	Vanderbilt	L	4-5
Feb. 19	Georgia Southern	W	8-0
Feb. 26	USF	L	4-5
Mar. 5	North Carolina	W	5-4
Mar. 16	Duke	L	1-6
Mar. 18	Tennessee	W	5-4
Mar. 19	Clemson	W	5-4
Mar. 20	Maryland	W	8-1
Mar. 26	Texas A&M	W	5-2
Mar. 29	Georgia	L	0-6
Mar. 31	Virginia	W	8-1
Apr. 2	South Carolina	L	3-6
Apr. 7	Miami	L	3-6
Apr. 8	Florida International	W	5-4
Apr. 9	San Diego	L	2-6
Apr. 11	Georgia Tech	W	6-0
Apr. 14	NC State	W	5-4
Apr. 15	Wake Forest	L	3-6
Apr. 21	Virginia (ACC)	W	5-3
Apr. 22	Wake Forest (ACC)	L	2-5

**1996****Record: 8-11**

Feb. 2	Vanderbilt	L	0-8
Feb. 14	Jacksonville	W	8-0
Feb. 18	Miami	W	5-3
Feb. 19	Georgia Southern	W	7-2
Feb. 24	Maryland	W	6-2
Mar. 2	Clemson	W	5-4
Mar. 3	Georgia	L	1-6
Mar. 10	Wake Forest	L	4-5
Mar. 12	NC State	W	8-1
Mar. 14	Virginia	L	4-5
Mar. 15	Notre Dame	L	1-6
Mar. 17	Ole Miss	L	2-5
Mar. 30	North Carolina	L	4-5
Mar. 31	Duke	L	1-8
Apr. 4	Florida	L	1-8
Apr. 13	Georgia Tech	W	8-1
Apr. 19	Virginia (ACC)	W	5-3
Apr. 20	Duke (ACC)	L	0-6
May 3	South Carolina (NCAA)	L	2-5

**LISE GREGORY**  
**(1997-2004)**

CAREER RECORD: 115-82

Gregory was the women's tennis head coach for eight seasons in Tallahassee...first

Seminole head coach to earn Atlantic Coast Conference Coach of the Year honors twice (1999 and 2004)...has the second-best winning percentage among all head coaches at .584...was named ITA South Region Coach of the Year in 2004.

**1997****Record: 12-11**

Feb. 8	South Alabama	L	2-7
Feb. 9	Vanderbilt	L	0-9
Feb. 15	Auburn	W	7-1
Feb. 16	Miami	L	3-6
Feb. 17	Florida International	W	8-1
Feb. 22	Georgia Tech	W	8-1
Feb. 23	California	L	2-7
Mar. 1	Clemson	W	6-3
Mar. 5	Florida	L	0-9
Mar. 8	North Carolina	W	7-2
Mar. 11	Baylor	L	4-5
Mar. 13	Rice	W	5-4
Mar. 14	Houston	L	4-5
Mar. 18	Duke	L	1-7
Mar. 21	NC State	W	6-3
Mar. 22	Wake Forest	L	2-6
Mar. 25	Maryland	W	7-2
Mar. 28	Illinois	W	8-1
Apr. 5	Virginia	W	7-2
Apr. 10	USF	W	5-4
Apr. 18	Georgia Tech (ACC)	W	5-1
Apr. 19	Wake Forest (ACC)	L	1-5
May 9	Vanderbilt (NCAA)	L	1-5

**1998****Record: 11-11**

Feb. 7	Georgia Southern	W	7-2
Feb. 11	Florida	L	1-8
Feb. 21	Georgia Tech	L	4-5
Feb. 22	Clemson	L	4-5
Feb. 28	Maryland	L	4-5
Mar. 1	Virginia	W	5-4
Mar. 6	USF	W	6-3
Mar. 9	Houston	W	7-2
Mar. 10	Virginia Tech	L	4-5
Mar. 12	Baylor	W	5-4
Mar. 14	Wake Forest	L	3-6
Mar. 15	NC State	L	4-5
Mar. 21	South Alabama	L	1-8
Mar. 22	Auburn	W	6-3
Mar. 24	Illinois	W	6-3
Apr. 2	Jacksonville	W	7-0
Apr. 5	Florida International	W	6-3





Apr. 9	Duke	L	1-8
Apr. 10	North Carolina	W	5-4
Apr. 23	North Carolina (ACC)	W	7-2
Apr. 24	Duke (ACC)	L	5-0
May 8	Vanderbilt (NCAA)	L	6-0

**1999****Record: 21-7**

Jan. 30	Jacksonville	W	9-0
Jan. 31	Illinois	W	5-1
Feb. 6	Southern Miss	W	9-0
Feb. 7	Auburn	W	7-2
Feb. 12	Georgia State	W	6-0
Feb. 13	Florida	L	1-8
Feb. 14	Georgia Southern	W	8-1
Feb. 20	USF	W	8-1
Feb. 23	South Alabama	W	5-1
Feb. 27	Vanderbilt	L	4-5
Mar. 6	Miami	L	4-5
Mar. 7	Florida International	W	7-2
Mar. 9	Baylor	W	7-2
Mar. 10	Houston	W	5-4
Mar. 12	Rice	W	6-3
Mar. 13	Tulane	W	5-4
Mar. 20	Virginia	W	6-3
Mar. 21	Maryland	W	9-0
Mar. 24	Kansas	W	6-3
Mar. 26	Wake Forest	L	4-5
Mar. 28	NC State	W	9-0
Apr. 2	Duke	L	0-9
Apr. 3	North Carolina	W	6-3
Apr. 10	Georgia Tech	W	6-3
Apr. 11	Clemson	W	5-4
Apr. 23	Virginia (ACC)	W	5-1
Apr. 24	Wake Forest (ACC)	L	4-5
May 15	Iowa (NCAA)	L	4-5

**2000****Record: 16-9**

Jan. 29	Georgia Southern	W	8-1
Feb. 4	Vanderbilt	L	1-8
Feb. 5	Iowa	W	5-4
Feb. 9	Florida	L	1-5
Feb. 12	Auburn	W	6-3
Feb. 18	Jacksonville	W	9-0
Feb. 20	Southern Miss	W	6-3
Feb. 28	LSU	W	5-4
Mar. 4	USF	W	7-2
Mar. 5	Miami	W	5-1
Mar. 8	Baylor	L	4-5
Mar. 9	Tulane	W	7-2
Mar. 18	Maryland	W	9-0
Mar. 19	Virginia	W	7-2
Mar. 24	Virginia	W	5-2
Mar. 25	Wake Forest	L	1-8
Mar. 26	NC State	W	8-1
Mar. 29	Duke	L	2-7
Apr. 3	Utah	W	7-2
Apr. 8	Georgia Tech	L	4-5

Apr. 9	Clemson	L	4-5
Apr. 21	Georgia Tech (ACC)	W	5-3
Apr. 22	Wake Forest (ACC)	L	0-5
May 12	Illinois (NCAA)	W	5-3
May 13	Florida (NCAA)	L	0-5

**2001****Record: 13-11**

Jan. 27	Georgia State	W	7-0
Feb. 4	Alabama	L	3-4
Feb. 9	Florida	L	0-7
Feb. 12	Tulane	W	4-3
Feb. 13	LSU	L	3-4
Feb. 24	Miami	L	3-4
Feb. 25	Florida International	L	2-5
Feb. 28	USF	W	4-3
Mar. 6	Michigan State	W	7-0
Mar. 8	Marquette	W	6-1
Mar. 11	Pepperdine	L	3-4
Mar. 12	Loyola Marymount	W	4-3
Mar. 13	San Diego State	W	4-3
Mar. 24	NC State	W	6-1
Mar. 25	Wake Forest	L	3-4
Mar. 31	North Carolina	L	1-6
Apr. 1	Duke	L	0-7
Apr. 7	Georgia Tech	W	6-1
Apr. 8	Clemson	W	5-2
Apr. 11	Maryland	W	5-2
Apr. 12	Virginia	W	4-3
Apr. 20	Georgia Tech (ACC)	W	4-2
Apr. 21	Duke (ACC)	L	0-4
May 12	South Carolina (NCAA)	L	2-4

**2002****Record: 11-15**

Jan. 22	Florida AGM	W	6-1
Jan. 26	Georgia Southern	W	7-0
Jan. 27	Vanderbilt	L	0-7
Feb. 3	UCF	W	4-3
Feb. 9	LSU	W	4-3
Feb. 10	Florida Atlantic	W	5-1
Feb. 15	Auburn	L	3-4
Feb. 20	Florida	L	1-5
Feb. 23	South Alabama	L	3-4
Feb. 24	Alabama	L	3-4
Mar. 1	Miami	L	3-4
Mar. 3	Harvard	W	5-2
Mar. 7	Michigan State	W	6-1
Mar. 10	Florida International	L	3-4
Mar. 11	USF	W	6-1
Mar. 16	Maryland	L	3-4
Mar. 17	Virginia	L	3-4
Mar. 23	NC State	W	5-2
Mar. 24	Wake Forest	L	1-6
Mar. 30	North Carolina	L	1-6
Apr. 4	Duke	L	1-6
Apr. 6	Georgia Tech	W	6-1
Apr. 7	Clemson	L	3-4
Apr. 18	Maryland (ACC)	W	4-3

Apr. 19	North Carolina (ACC)	L	1-4
May 11	VCU (NCAA)	L	0-4

**2003****Record: 13-10**

Jan. 18	Florida A&M	W	7-0
Jan. 19	Stetson	W	7-0
Jan. 25	Georgia Southern	W	7-0
Jan. 26	UCF	W	6-1
Feb. 1	Tulane	L	3-4
Feb. 2	LSU	W	4-3
Feb. 15	Furman	W	6-1
Feb. 19	Florida	L	0-7
Feb. 23	Alabama	L	3-4
Feb. 26	USF	W	7-0
Mar. 1	Baylor	W	4-3
Mar. 2	Rice	W	4-3
Mar. 8	South Alabama	L	2-5
Mar. 10	Florida International	W	4-3
Mar. 15	Virginia	L	3-4
Mar. 22	Wake Forest	W	4-3
Mar. 23	NC State	W	6-1
Mar. 25	Maryland	W	6-1
Mar. 29	North Carolina	L	1-6
Mar. 30	Duke	L	1-6
Apr. 5	Georgia Tech	L	2-5
Apr. 6	Clemson	L	1-6
Apr. 18	North Carolina (ACC)	L	0-4

**2004****Record: 18-8**

Jan. 24	Georgia Southern	W	7-0
Jan. 28	Troy	W	7-0
Jan. 31	Stetson	W	7-0
Feb. 6	Rice	W	5-1
Feb. 8	UCF	W	6-1
Feb. 14	UAB	W	7-0
Feb. 15	Alabama	L	2-5
Feb. 18	Florida	L	1-6
Feb. 22	LSU	L	3-4
Feb. 26	USF	W	5-2
Mar. 5	Florida International	W	6-1
Mar. 6	Tulane	L	3-4
Mar. 8	Michigan State	W	5-2
Mar. 10	Penn State	W	6-1
Mar. 13	Maryland	W	5-2
Mar. 14	Virginia	W	6-1
Mar. 20	NC State	W	7-0
Mar. 21	Wake Forest	W	6-1
Mar. 26	North Carolina	W	4-3
Mar. 28	Duke	L	3-4
Apr. 3	Georgia Tech	W	4-3
Apr. 4	Clemson	L	3-4
Apr. 16	Wake Forest (ACC)	W	4-2
Apr. 17	Duke (ACC)	L	1-4
May 15	Marshall (NCAA)	W	4-2
May 16	Vanderbilt (NCAA)	L	1-4



## JENNIFER HYDE (2005-PR)

CAREER RECORD: 165-114

Led Florida State to its third-ever ACC Title match in 2013, defeating two top-15 teams en route to the final...had one of

the most successful seasons in school history in 2010-2011 by taking the Seminoles to the ACC title match for just the second time ever and garnered a No. 11 ranking during the season, which is the highest in FSU history...named 2007 ITA South Region Coach of the Year...returned to her alma mater in 2004 to lead the Seminole squad...captain of the 1994 team that finished at No. 17 in the nation...only the second alum to return to coach at Florida State...led her team to the postseason for the eleventh time in the last twelve seasons in 2014...hosted the first and second rounds of the NCAA Tournament for the first time in program history...winningest coach in school history.

### 2005

Record: 11-12

	Opp	FSU
Jan. 23	Baylor	41 31 L 5-2
Feb. 11	UCF	- 42 W 7-0
Feb. 12	Alabama	33 42 W 5-2
Feb. 16	Florida	2 34 L 1-6
Feb. 19	Tulane	15 34 L 3-4
Mar. 2	USF	57 34 W 4-3
Mar. 6	San Diego	52 34 W 4-3
Mar. 8	San Diego State	25 33 W 4-3
Mar. 11	Miami	9 33 L 2-5
Mar. 12	Florida International	58 33 L 2-5
Mar. 14	Virginia Tech	- 33 W 7-0
Mar. 18	Maryland	61 33 W 6-1
Mar. 20	Virginia	64 33 W 6-1
Mar. 25	NC State	- 29 W 7-0
Mar. 27	Wake Forest	26 29 L 3-4
Apr. 2	North Carolina	16 32 L 1-6
Apr. 3	Duke	10 32 L 3-4
Apr. 9	Georgia Tech	8 34 L 2-5
Apr. 10	Clemson	13 34 L 0-7
Apr. 15	Florida A&M	- 39 W 7-0
Apr. 21	Virginia (ACC)	- 36 W 4-3
Apr. 23	Georgia Tech (ACC)	6 36 L 1-4
May 13	Florida International (NCAA)	33 43 L 2-4

### 2006

Record: 9-13

	Opp	FSU
Jan. 30	Auburn	- 50 W 4-3
Feb. 5	Bethune-Cookman	- 50 W 7-0
Feb. 5	Florida A&M	- 50 W 5-0
Feb. 12	Stetson	- 54 W 6-1
Feb. 15	Florida	2 54 L 0-7
Feb. 18	Georgia Southern	- 56 W 7-0
Feb. 18	Troy	72 56 W 4-3
Feb. 22	LSU	43 57 L 2-5

Feb. 24	UAB	- 57 W 5-2
Feb. 26	Florida International	41 57 L 2-5
Mar. 3	Miami	10 56 L 0-7
Mar. 10	Boston College	56 68 W 4-2
Mar. 12	Maryland	28 68 L 3-4
Mar. 15	North Carolina	3 61 L 1-6
Mar. 25	NC State	50 64 L 2-5
Mar. 26	Wake Forest	16 64 L 0-7
Mar. 31	Clemson	24 67 L 3-4
Apr. 2	Georgia Tech	14 67 L 2-4
Apr. 8	Virginia	29 70 L 1-6
Apr. 9	Virginia Tech	62 70 W 4-3
Apr. 14	Duke	7 65 L 1-4
Apr. 20	Wake Forest (ACC)	20 68 L 1-4

### 2007

Record: 16-8

	Opp	FSU
Jan. 27	Jacksonville	- 61 W 6-1
Feb. 3	Georgia	16 61 L 1-6
Feb. 9	Rice	62 60 W 6-1
Feb. 11	Houston	- 60 W 5-1
Feb. 17	Stetson	- 59 W 7-0
Feb. 17	Florida A&M	- 59 W 7-0
Feb. 25	LSU	44 58 W 5-2
Feb. 28	Florida	3 50 L 3-4
Mar. 4	Florida International	28 50 W 4-3
Mar. 6	Miami	12 27 L 3-4
Mar. 9	NC State	38 27 W 5-2
Mar. 11	Wake Forest	14 27 W 4-3
Mar. 23	Clemson	7 15 L 2-5
Mar. 25	Georgia Tech	6 15 L 1-6
Mar. 30	Virginia	49 18 W 4-3
Apr. 1	Virginia Tech	70 18 W 7-0
Apr. 6	North Carolina	14 17 L 0-7
Apr. 7	Duke	21 17 W 4-3
Apr. 13	Boston College	- 14 W 7-0
Apr. 15	Maryland	- 14 W 7-0
Apr. 19	Boston College (ACC)	- 18 W 4-0
Apr. 20	Miami (ACC)	11 18 L 3-4
May 12	San Diego State (NCAA)	- 17 W 4-0
May 13	UCLA (NCAA)	12 17 L 2-4

### 2008

Record: 19-8

	Opp	FSU
Feb. 1	Rice	- 21 W 7-0
Feb. 3	Illinois	- 21 W 7-0
Feb. 3	Stetson	- 21 W 7-0
Feb. 9	UCF	- 22 W 7-0
Feb. 9	Florida A&M	- 22 W 6-0
Feb. 10	Jacksonville	- 22 W 7-0
Feb. 15	Auburn	30 22 W 5-2
Feb. 21	Florida	5 20 L 1-6
Feb. 24	LSU	35 20 W 8-1
Feb. 29	Miami	10 20 W 5-2
Mar. 2	Florida International	40 20 W 7-0
Mar. 9	Clemson	42 12 L 2-5
Mar. 12	UNLV	42 16 W 7-0

Mar. 22	Virginia Tech	47 15 W 7-0
Mar. 23	Virginia	50 15 L 3-4
Mar. 28	North Carolina	12 21 W 4-3
Mar. 30	Duke	6 21 L 3-4
Apr. 2	Georgia Tech	2 18 L 3-4
Apr. 4	Maryland	- 18 W 5-2
Apr. 6	Boston College	- 18 W 6-1
Apr. 11	Wake Forest	32 19 W 6-1
Apr. 13	NC State	45 19 L 3-4
Apr. 17	Boston College (ACC)	- 19 W 5-0
Apr. 18	Miami (ACC)	11 19 W 4-2
Apr. 19	Duke (ACC)	9 19 L 2-4
May 9	Samford (NCAA)	- 15 W 4-0
May 10	Texas (NCAA)	19 15 L 2-5

### 2009

Record: 17-8

	Opp	FSU
Jan. 24	Jacksonville	- 20 W 4-0
Jan. 31	Arizona State	21 20 L 1-4
Feb. 1	TCU	25 20 L 2-4
Feb. 8	Georgia State	- 26 W 5-2
Feb. 8	UNC Greensboro	- 26 W 7-0
Feb. 14	Furman	- 26 W 6-1
Feb. 15	USF	55 26 W 6-0
Feb. 22	LSU	23 26 W 5-2
Feb. 28	Florida	13 24 W 5-2
Mar. 8	Georgia Tech	8 17 L 2-5
Mar. 11	Miami	6 24 L 0-7
Mar. 15	Clemson	12 24 L 1-5
Mar. 20	Duke	7 30 L 1-6
Mar. 22	North Carolina	15 30 W 5-2
Mar. 27	Virginia	22 25 W 4-3
Mar. 29	Virginia Tech	54 25 W 5-2
Apr. 3	Wake Forest	34 17 W 6-1
Apr. 5	NC State	- 17 W 6-1
Apr. 11	Boston College	73 18 W 5-1
Apr. 12	Maryland	- 18 W 7-0
Apr. 16	NC State (ACC)	- 17 W 4-0
Apr. 17	Georgia Tech (ACC)	7 17 W 4-3
Apr. 18	Miami (ACC)	6 17 L 0-4
May 9	Auburn (NCAA)	33 18 W 4-0
May 10	Florida (NCAA)	15 18 L 2-4

### 2010

Record: 16-11

	Opp	FSU
Jan. 23	USF	75 15 L 2-5
Jan. 30	Virginia	26 25 W 4-2
Jan. 31	Ohio State	38 25 W 6-1
Feb. 5	Illinois	32 21 W 4-3
Feb. 7	Northwestern	2 21 L 0-7
Feb. 12	Baylor	5 20 L 2-5
Feb. 13	Georgia	10 20 L 1-6
Feb. 14	Tennessee	13 20 W 4-3
Feb. 21	LSU	70 14 W 6-1
Feb. 23	Florida	9 15 L 0-7
Mar. 7	Clemson	10 13 L 2-5
Mar. 10	Pepperdine	37 15 W 6-1





Mar. 19	Miami	13	19	L	2-5
Mar. 26	Virginia	30	17	W	5-2
Mar. 28	Virginia Tech	-	17	W	6-1
Apr. 2	Wake Forest	43	17	W	4-3
Apr. 3	NC State	30	17	W	7-0
Apr. 10	Boston College	-	13	W	6-1
Apr. 11	Maryland	-	13	W	7-0
Apr. 17	Duke	6	15	L	0-4
Apr. 18	North Carolina	1	15	L	0-4
Apr. 22	Maryland (ACC)	-	14	W	4-0
Apr. 23	Duke (ACC)	10	14	W	4-2
Apr. 24	North Carolina (ACC)	1	14	L	0-4
May 14	North Florida (NCAA)	68	15	W	4-0
May 15	South Carolina (NCAA)	18	15	W	4-0
May 20	North Carolina (NCAA)	2	15	L	1-4

**2011****Record: 16-9**

		Opp	FSU		
Jan. 22	Florida International	54	14	W	5-2
Jan. 29	Princeton	37	14	W	5-2
Jan. 30	Washington	24	14	L	3-4
Feb. 11	Auburn	61	15	W	6-1
Feb. 13	Miami	10	15	L	1-6
Feb. 26	Georgia Tech	15	20	W	5-2
Mar. 1	Florida	1	22	L	1-5
Mar. 6	USF	55	22	L	2-5
Mar. 9	UCF	-	36	W	6-1
Mar. 13	Clemson	19	36	L	2-5
Mar. 17	Georgia State	-	35	W	5-2
Mar. 26	Virginia Tech	57	35	W	5-2
Mar. 27	Virginia	17	35	L	2-5
Apr. 1	NC State	36	34	L	3-4
Apr. 3	Wake Forest	50	34	W	6-1
Apr. 8	Maryland	26	31	W	4-3
Apr. 10	Boston College	46	31	W	4-3
Apr. 15	North Carolina	4	27	W	4-2
Apr. 17	Duke	3	27	W	4-2
Apr. 21	Wake Forest (ACC)	61	18	W	4-0
Apr. 22	Virginia (ACC)	11	18	W	4-3
Apr. 23	Duke (ACC)	3	18	W	4-3
Apr. 24	North Carolina (ACC)	5	18	L	3-4
May 14	Southern (NCAA)	-	12	W	4-0
May 15	SMU (NCAA)	32	12	L	3-4

**2012****Record: 13-11**

		Opp	FSU		
Jan. 21	UCF	-	17	W	6-1
Jan. 28	Ohio State	56	18	W	5-2
Jan. 29	Ole Miss	37	18	L	3-4
Feb. 1	North Florida	-	18	W	5-0
Feb. 4	Florida International	74	21	W	5-2
Feb. 12	Auburn	-	21	W	5-2
Feb. 24	USF	45	22	L	3-4
Feb. 26	Miami	14	22	L	2-5
Feb. 29	Florida	15	68	L	0-7
Mar. 7	Pepperdine	31	61	W	5-2
Mar. 10	Clemson	26	61	L	2-5

Mar. 17	Georgia Tech	25	39	L	2-5
Mar. 21	TCU	39	40	W	5-2
Mar. 24	NC State	-	40	W	5-2
Mar. 25	Wake Forest	-	40	W	5-2
Mar. 30	Maryland	69	37	W	6-1
Apr. 1	Boston College	66	37	W	5-2
Apr. 6	North Carolina	8	31	L	0-4
Apr. 7	Duke	3	31	L	2-4
Apr. 13	Virginia Tech	70	33	W	7-0
Apr. 15	Virginia	15	33	L	3-4
Apr. 19	Virginia Tech (ACC)	-	32	W	4-0
Apr. 20	North Carolina (ACC)	8	32	L	2-4
May 11	Washington State (NCAA)	31	36	L	3-4

**2013****Record: 16-10**

		Opp	FSU		
Jan. 15	Troy	-	38	W	6-1
Jan. 15	Florida A&M	-	38	W	6-1
Jan. 26	Baylor	15	36	L	1-4
Jan. 27	Rice	29	36	W	4-2
Feb. 2	USF	45	29	W	6-1
Feb. 15	UCF	-	27	W	7-0
Feb. 17	Georgia State	61	27	W	5-2
Feb. 22	Florida International	-	25	W	4-1
Feb. 23	Miami	11	25	W	4-3
Mar. 1	Clemson	23	16	L	2-5
Mar. 6	Florida	5	16	L	0-4
Mar. 10	Georgia Tech	32	16	L	3-4
Mar. 13	UNLV	-	22	W	6-1
Mar. 28	Wake Forest	-	26	W	6-1
Mar. 30	NC State	35	26	W	4-0
Apr. 5	Boston College	-	20	L	2-4
Apr. 7	Maryland	-	20	W	6-1
Apr. 12	Duke	9	30	L	3-4
Apr. 14	North Carolina	1	30	L	2-5
Apr. 20	Virginia	17	32	L	0-4
Apr. 21	Virginia Tech	68	32	W	4-1
Apr. 25	Wake Forest (ACC)	-	30	W	4-1
Apr. 26	Clemson (ACC)	11	30	W	4-3
Apr. 27	Virginia (ACC)	13	30	W	4-3
Apr. 28	Miami (ACC)	10	30	L	1-4
May 10	Memphis (NCAA)	33	21	L	1-4

**2014****Record: 16-13**

		Opp	FSU		
Jan. 19	Stetson	-	24	W	4-2
Jan. 19	UAB	-	24	W	4-1
Jan. 25	Rice	22	24	L	3-4
Jan. 26	Auburn	23	24	L	1-4
Jan. 31	USF	62	27	W	5-2
Feb. 8	LSU	60	27	W	4-1
Feb. 8	Mercer	-	27	W	7-0
Feb. 18	Florida	5	30	L	0-7
Feb. 21	Wake Forest	50	30	W	4-3
Feb. 23	Maryland	-	30	W	7-0
Feb. 28	Georgia Tech	19	34	L	2-5
Mar. 2	Boston College	56	34	W	6-1

Mar. 7	Syracuse	-	25	L	3-4
Mar. 9	Notre Dame	31	25	L	1-6
Mar. 17	NC State	-	36	W	5-2
Mar. 23	Duke	1	43	L	0-6
Mar. 30	Florida AGM	-	36	W	4-0
Mar. 30	North Florida	-	36	W	4-0
Apr. 4	Clemson	15	33	L	0-7
Apr. 6	North Carolina	6	38	L	0-7
Apr. 11	Miami	16	45	L	1-6
Apr. 13	Pitt	-	45	W	5-2
Apr. 13	Florida AGM	-	45	W	4-1
Apr. 18	Virginia	9	44	L	0-4
Apr. 20	Virginia Tech	60	44	W	4-0
Apr. 24	Syracuse (ACC)	64	42	W	4-1
Apr. 25	North Carolina (ACC)	11	42	L	0-4
May 9	Arizona (NCAA)	27	37	W	4-3
May 10	Georgia (NCAA)	1	37	L	0-4

**2015****Record: 16-11**

		Opp	FSU		
Jan. 24	USF	53	30	W	4-1
Jan. 25	Miami	13	30	L	0-5
Feb. 14	Florida AGM	-	34	W	4-1
Feb. 14	Florida Gulf Coast	-	34	W	4-0
Feb. 18	Florida	2	34	L	3-4
Feb. 21	Air Force	-	34	W	6-1
Feb. 21	Mercer	-	34	W	4-0
Feb. 27	Clemson	14	52	L	3-4
Mar. 1	Wake Forest	53	52	W	7-0
Mar. 7	Virginia Tech	49	57	L	2-4
Mar. 8	Virginia	5	57	L	1-6
Mar. 12	USF	-	72	W	6-1
Mar. 17	Georgia Tech	57	67	W	4-3
Mar. 20	Notre Dame	32	67	L	3-4
Mar. 22	NC State	-	67	W	5-2
Mar. 22	Florida AGM	-	67	W	4-0
Mar. 27	Boston College	65	61	L	3-4
Mar. 29	Syracuse	-	61	W	7-0
Apr. 2	North Carolina	2	66	L	2-5
Apr. 4	Duke	24	66	L	0-4
Apr. 10	Louisville	-	69	W	4-1
Apr. 12	Pitt	-	69	W	6-1
Apr. 18	Miami	16	70	L	2-5
Apr. 22	Pitt (ACC)	-	73	W	4-0
Apr. 23	Notre Dame (ACC)	36	73	W	4-3
Apr. 24	Miami (ACC)	15	73	W	4-3
Apr. 25	Georgia Tech (ACC)	27	73	L	3-4



## ACC TOURNAMENT

**1992**

Virginia	QF	W	6-0
Wake Forest	SF	L	2-5

**1993**

North Carolina	QF	W	5-3
Clemson	SF	L	2-7

**1994**

NC State	QF	W	5-1
Clemson	SF	W	5-3
Duke	Final	L	0-5

**1995**

Virginia	QF	W	5-3
Wake Forest	SF	L	2-5

**1996**

Virginia	QF	W	5-3
Duke	SF	L	0-6

**1997**

Georgia Tech	QF	W	5-1
Wake Forest	SF	L	1-5

**1998**

North Carolina	QF	W	7-2
Duke	SF	L	0-5

**1999**

Virginia	QF	W	5-1
Wake Forest	SF	L	4-5

**2000**

Georgia Tech	QF	W	5-3
Wake Forest	SF	L	0-5

**2001**

Georgia Tech	QF	W	4-2
Duke	SF	L	0-4

**2002**

Maryland	QF	W	4-3
North Carolina	SF	L	1-4

**2003**

North Carolina	QF	L	0-4
----------------	----	---	-----

**2004**

Wake Forest	QF	W	4-2
Duke	SF	L	1-4

**2005**

Virginia	1st	W	4-3
Georgia Tech	QF	L	1-4

**2006**

Wake Forest	1st	L	1-4
-------------	-----	---	-----

**2007**

Boston College	1st	W	4-0
Miami	QF	L	3-4

**2008**

Boston College	1st	W	5-0
Miami	QF	W	4-2
Duke	SF	L	2-4

**2009**

NC State	1st	W	4-0
Georgia Tech	QF	W	4-3
Miami	SF	L	0-4

**2010**

Maryland	1st	W	4-0
Duke	QF	W	4-2
North Carolina	SF	L	0-4

**2011**

Wake Forest	1st	W	4-0
Virginia	QF	W	4-3
Duke	SF	W	4-3
North Carolina	Final	L	3-4

**2012**

Virginia Tech	1st	W	4-0
North Carolina	QF	L	2-4

**2013**

Wake Forest	1st	W	4-1
Clemson	QF	W	4-3
Virginia	SF	W	4-3
Miami	Final	L	1-4

**2014**

Syracuse	1st	W	4-1
North Carolina	QF	L	0-4

**2015**

Pitt	1st	W	4-0
Notre Dame	2nd	W	4-3
Miami	QF	W	4-3
Georgia Tech	SF	L	3-4

## NCAA TOURNAMENT

**1983**

Singles Championship
Round 64
Tracy Blumentritt (Rice) d. Jaime Kaplan (FSU) 3-6, 6-3, 6-0

**Doubles Championship**

Round 32
Jamie Kaplan - Lee McGuire (FSU) d. Margaret Redfern - Joy Tacon (Houston) 7-6, 7-5, 6-4
Round 16
#1 Louise Allen - Gretchen Rush (Trinity) d. Jamie Kaplan - Lee McGuire (FSU) 6-1, 6-0

**1985**

Doubles Championship
Round 32
Kiki Rozwadowski - Lori MacGill (USF) d. Sue Hatch - Patti Henderson (FSU) 6-2, 6-3

**1993**

Singles Championship
Round 64
Suzi Italiano (USC) d. Audra Brannon (FSU) 6-4, 7-6

**Doubles Championship**

Round 32
Audra Brannon/Laura Randmaa (FSU) d. Danielle Paradine/Jody Yin (Indiana) 6-3, 6-1
Round 16
Audra Brannon/Laura Randmaa (FSU) d. Melissa Mazzotta/Maria Pilar Valls (Miami) 7-6 (6), 4-6, 6-1
Quarterfinals
#3 Laxmi Poruri/Heather Willens (Stanford) d. Audra Brannon/Laura Randmaa (FSU) 7-6 (2) 6-3

**1994**

Team Championship
Round 20
#16 Arizona d. #19 FSU 5-3

**Singles Championship**

Round 64
Marie-Laure Bougnol (Ole Miss) d. #9-16 Audra Brannon (FSU) 6-4, 6-4
Maggie Simkova (USC) d. Lori Sowell (FSU) 1-6, 6-0, 6-4

**Doubles Championship**

Round 32
Nicole Elliott/Vera Vitels (California) d. Audra Brannon/Elke Juul (FSU) 7-5, 6-2



**1995**

Singles Championship  
Round 64  
Lori Sowell (FSU) d. #8 Katie Schluker (Stanford) 6-4, 6-1  
Round 32  
Lori Sowell (FSU) d. Melissa Zimpfer (Tennessee) 7-5, 6-4  
Round 16  
Lori Sowell (FSU) d. #14 Joelle Schad (Arizona State) 6-0, 3-3, ret.  
Quarterfinals  
#2 Keri Phebus (UCLA) d. Lori Sowell (FSU) 6-0, 6-2

**1996**

NCAA South Regional  
Florida State 2, South Carolina 5

Singles Championship  
Round 64  
Lori Sowell (FSU) d. #9-16 Farley Taylor (Texas) 7-5, 7-6  
Round 32  
Lori Sowell (FSU) def. Stephanie Sammaritano (Arizona) 6-4, 7-5  
Round 16  
#6 Ania Bleszynski (Stanford) d. Lori Sowell (FSU) 7-5, 6-3

**Doubles Championship**

Round 32  
#4 Paige Yaroshuk/Keri Phebus (UCLA) d. Lori Sowell/Elke Juul (FSU) 6-1, 6-1

**1997**

NCAA Southeast Regional  
Florida State 1, Vanderbilt 5

**1998**

NCAA Southeast Regional  
Florida State 0, Vanderbilt 6

**1999**

NCAA Midwest Regional  
Florida State 4, Iowa 5

**2000**

NCAA South Regional  
Florida State 5, Illinois 3  
Florida State 0, Florida 5

**Singles Championship**

Round 64  
Bea Bielik (Wake Forest) d. Alida Gallovits (FSU) 6-0, 6-0

**2001**

NCAA South Regional  
Florida State 2, South Carolina 4

**Singles Championship**

Round 64  
#59 Alida Gallovits (FSU) d. #45 Maria Phillips (Oklahoma St.) 7-6, 7-6  
#2 Ansley Cargill (Duke) d. #59 Alida Gallovits (FSU) 6-1, 6-0

**2002**

NCAA South Regional  
Florida State 0, VCU 4

**Singles Championship**

Round 64  
#5 Agara Cioroch (UGA) d. Anca Dumitrescu (FSU) 6-2, 6-2

**2004**

NCAA South Regional  
Florida State 4, Marshall 2  
Florida State 1, Vanderbilt 4

**Singles Championship**

Round 64  
#27 Megan Muth (William & Mary) d. Anca Dumitrescu (FSU), 6-2, 5-7, 7-6

**2005**

NCAA South Regional  
Florida State 2, FIU 4

**Singles Championship**

Round 64  
Chloe Carlotti (Ole Miss) d. Mihaela Moldovan (FSU), 6-1, 7-5

**Doubles Championship**

Round 32  
Alice Barnes/Erin Burdette (Stanford) d. Mihaela Moldovan/Lindsay Deason (FSU), 6-3, 6-4

**2007**

NCAA Regional  
Florida State 4, San Diego State 0  
Florida State 2, UCLA 4

**Doubles Championship**

Round 32  
Olga Borisova/Marianna Yuferova (VCU) d. Nicola Slater/Lauren Macfarlane (FSU), 5-7, 6-4, 6-4

**2008**

NCAA Regional  
Florida State 4, Samford 0  
Florida State 2, No. 19 Texas 5

**Singles Championship**

Round of 64  
Gabriela Niculescu (USC) d. Katie Rybakova (FSU) 6-4, 4-6, 7-6 (10-8)

**2009**

NCAA Regional  
Florida State 4, Auburn 0  
Florida State 2, Florida 4

**Singles Championship**

Round of 64  
Kristy Frilling (Notre Dame) d. Katie Rybakova (FSU) 6-1, 6-2  
Noemie Scharle (FSU) d. Jenni Heisner (San Francisco) 6-4, 4-6, 6-2  
Round of 32  
Maria Mosolova (Northwestern) d. Noemie Scharle (FSU) 4-6, 5-5, 7-5

**2010**

NCAA Regional  
Florida State 4, North Florida 0  
Florida State 4, South Carolina 0  
Florida State 1, North Carolina 4

**Singles Championship**

Round of 64  
Lenka Broosova (Baylor) d. Lauren McCreless (FSU) 3-6, 6-1, 6-3

**2011**

NCAA Regional  
Florida State 4, Southern 0  
Florida State 3, SMU 4

**Singles Championship**

Round of 64  
No. 41 Noelle Hickey (UCLA) d. Katie Rybakova (FSU) 6-2, 6-2  
No. 32 Kristi Boxx (Ole Miss) d. Noemie Scharle (FSU) 6-2, 6-3

**2012**

NCAA Regional  
Florida State 3, Washington State 4

**2013**

NCAA Regional  
Florida State 1, Memphis 4

**2014**

NCAA Regional  
Florida State 4, Arizona 3  
Florida State 0, Georgia 4

**Doubles Championship**

Round of 32  
No. 78 Michaela Capannolo/Yuki Chiang (Pepperdine) d. No. 30 Daneika Borthwick/Kerrie Cartwright (FSU) 1-6, 6-4, 6-2



## SEASON

### Top 10 Singles Percentage

1.	Mihaela Moldovan	2004	33-4	89.2
2.	Amy Sargeant	2013	30-7	81.1
3.	Lisa Ehrgott	1983	21-5	80.8
4.	Natalie Tirapelli	2004	12-3	80.0
	Kia Asberg	2000	20-5	80.0
	Buffy Baker	1988	28-7	80.0
7.	Samantha Schoeffel	2001	15-4	78.9
8.	Carolyn Walter	2008	29-8	78.4
	Lauren McCreless	2007	29-8	78.4
10.	Patti Henderson	1983	14-4	77.8

### Top 10 Singles Wins

1.	Mihaela Moldovan	2004	33-4
2.	Federica Suess	2008	31-9
	Marina Raic	1999	31-9
4.	Amy Sargeant	2013	30-7
	Kia Asberg	1999	30-8
6.	Carolyn Walter	2008	29-8
	Lauren McCreless	2007	29-8
8.	Katie Rybakova	2008	28-12
	Lori Sowell	1994	28-10
	Audra Brannon	1991	28-15
	Buffy Baker	1988	28-7

### Top 10 Doubles Percentage

1.	Jaime Kaplan	1983	23-5	82.1
	Lee McGuire	1983	23-5	82.1
3.	Suzanna Mansour	2007	9-2	81.8
4.	Jessica Sucupira	2008	32-8	80.0
	Lauren McCreless	2008	28-7	80.0
6.	Tracey Smith	1989	18-5	78.3
7.	Elke Juul	1995	21-6	77.8
	Lori Sowell	1995	21-6	77.8
9.	Federica Suess	2008	26-8	76.5
10.	Tapiwa Marobela	2007	19-6	76.0

### Top 10 Doubles Wins

1.	Jessica Sucupira	2008	32-8
	Nicola Slater	2007	32-12
3.	Lauren McCreless	2008	28-7
	Miranda Foley	2007	28-10
5.	Carolyn Walter	2008	27-12
6.	Federica Suess	2008	26-8
7.	Alida Gallowits	2000	25-17
8.	Audra Brannon	1993	24-10
9.	Laura Randmaa	1993	24-9
10.	Jaime Kaplan	1983	23-5
	Lee McGuire	1983	23-5

## CAREER

### Top 10 Singles Percentage

1.	Mihaela Moldovan	2003-05	76-19	80.0
2.	Jaime Kaplan	1982-83	21-7	75.0
3.	Carolyn Walter	2006-08	56-21	72.7
4.	Buffy Baker	1988-91	103-44	70.1
5.	Claudia Gaughf	1983-86	32-14	69.6
6.	Lauren McCreless	2007-10	103-46	69.1
7.	Amy Sargeant	2010-13	74-35	67.9
8.	Jessica Sucupira	2007-10	101-48	67.8
9.	Lisa Ehrgott	1981-84	35-17	67.3
10.	Kia Asberg	1997-00	79-40	66.4

### Top 10 Singles Wins

1.	Buffy Baker	1988-91	103-44
	Lauren McCreless	2007-10	103-46
	Katie Rybakova	2008-11	103-62
4.	Federica Suess	2008-11	102-55
5.	Jessica Sucupira	2007-10	101-48
6.	Audra Brannon	1991-94	95-49
7.	Lori Sowell	1994-97	92-55
8.	Ali Weber	1997-00	87-56
9.	Christina Denny	2001-04	80-47
10.	Nicki Ivy	1989-92	79-59
	Kia Asberg	1997-00	79-40

### Top 10 Doubles Percentage

1.	Jaime Kaplan	1982-83	23-5	82.1
2.	Elke Juul	1993-96	69-26	72.6
3.	Carolyn Walter	2006-08	56-22	71.8
4.	Lee McGuire	1982-84	45-18	71.4
5.	Ruth Seaborne	2011-12	37-16	69.8
6.	Sue Hatch	1984-87	81-36	69.2
7.	Audra Brannon	1991-94	82-38	68.3
8.	Lori Sowell	1994-97	67-32	67.7
9.	Patti Henderson	1983-86	75-38	66.4
10.	Lindsay Deason	2004-05	39-20	66.1

### Top 10 Doubles Wins

1.	Lauren McCreless	2007-10	96-62
2.	Jessica Sucupira	2007-10	91-59
3.	Audra Brannon	1991-94	82-38
4.	Sue Hatch	1984-87	81-36
5.	Buffy Baker	1988-91	77-41
	Federica Suess	2008-11	77-77
7.	Francesca Segarelli	2010-13	76-57
8.	Patti Henderson	1983-86	75-38
9.	Jessica Balbuena	1999-02	73-44
10.	Katie Rybakova	2008-11	71-63

*\*To be eligible, players must be on team for two seasons*



**FSU Athletics Hall of Fame**

Patti Henderson	1992
Buffy Baker	1997
Lori Sowell	2003
Audra Brannon	2007

**Metro Conference Coach of the Year**

Anne Rizza	1981, 83-84
Patti Henderson	1989

**ACC Coach of the Year**

Alice Reen	1994
Lise Gregory	1999, 2004

**ITA South Region Coach of the Year**

Lise Gregory	2004
Jennifer Hyde	2007
Jennifer Hyde	2011

**ITA South Region Assistant Coach of the Year**

Oliver Foreman	2009
Oliver Foreman	2011

**ITA National Assistant Coach of the Year**

Oliver Foreman	2009
----------------	------

**ITA/Arthur Ashe Jr. Award for Leadership and Sportsmanship**

Audra Brannon	1993
Nanette Duxin	2001
Alida Gallovits	2002
Anca Dumitrescu	2004
Mihaela Moldovan	2005
Jessica Sucupira	2010
Federica Suess	2011

**ITA Southeast Region Cissie Leary Award for Leadership**

Lauren McCreless	2009
Francesca Segarelli	2012

**ITA Cissie Leary Award for Leadership - National**

Kia Asberg	2000
------------	------

**ITA South Region Senior Player of the Year**

Anca Dumitrescu	2004
Lauren McCreless	2010

**ITA Southeast Region Most Improved Senior**

Daneika Borthwick	2015
-------------------	------

**ITA South Region Rookie of the Year**

Mihaela Moldovan	2003
------------------	------

**CoSIDA Academic All-American**

Mihaela Moldovan	2004
------------------	------

**ACC Weaver-James-Corrigan Award**

Audra Brannon	1993
Kia Asberg	2000
Alida Gallovits	2002
Anca Dumitrescu	2004
Mihaela Moldovan	2005

**Metro Conference Champions**

1981, 83-84, 89

**Metro Conference Player of the Year**

Suzanne Doumar	1981
Patti Henderson	1986
Keri Preng	1989
Buffy Baker	1991

**ACC Player of the Year**

Audra Brannon	1994
---------------	------

**ACC Rookie of the Year**

Lori Sowell	1994
Francesca Segarelli	2010

**ITA All-American**

Audra Brannon	1993 doubles 1994 singles
Laura Randmaa	1993 doubles
Lori Sowell	1995 singles 1996 singles
Mihaela Moldovan	2005 singles

**All-ACC Team**

Audra Brannon	1992-94
Laura Randmaa	1993
Lori Sowell	1994-97
Elke Juul	1995-96
Ann Olsson	1997
Marina Raic	1999
Kia Asberg	1999-00
Alida Gallovits	1999-01
Anca Dumitrescu	2003-04
Mihaela Moldovan	2004-05
Ania Rynarzewska	2006
Nicola Slater	2007
Lauren Macfarlane	2007-08, 10
Katie Rybakova	2008-11
Noemie Scharle	2009
Francesca Segarelli	2011
Kerrie Cartwright	2014 (Second)
Daneika Borthwick	2013, 2014, 2015 (Third)
Gabriella Castaneda	2015 (Third)

**Metro Conference Tournament MVP**

Patti Henderson	1986
Keri Preng	1989
Buffy Baker	1991

**Metro Conference All-Tournament Team**

Buffy Baker	1988-91
Keri Preng	1988-89
Kirsten Turk	1989
Ann Waggoner	1990

**Metro Conference Flight Champions**

Suzanne Doumar	1981, No. 1 (S)/No. 1 (D)
Jaime Kaplan	1981, No. 1 (D)
Lisa Erghott	1983, No. 5 (S)
Patti Henderson	1983, No. 2 (D) 1984, No. 3 (S) & No. 1 (D) 1985, No. 2 (S)
Debbie Pollack	1983, No. 4 (S)
Jenny Cerino	1984, No. 6 (S) & No. 2 (D) 1985, No. 5 (S) & No. 3 (D)
Sue Hatch	1984, No. 2 (S) & No. 2 (D)
Lee McGuire	1984, No. 1 (D)

Buffy Baker	1989, No. 1 (D) 1990, No. 1 (D) 1991, No. 1 (S) & No. 1 (D)
Nicki Ivy	1989, No. 6 (S) 1991, No. 3 (D)
Kirsten Turk	1989, No. 3 (S)
Keri Preng	1989, No. 1 (D)
Christina Tee	1991, No. 4 (S) & No. 2 (D)
Robin Cifaldi	1991, No. 2 (D)
Audra Brannon	1991, No. 2 (S) & No. 1 (D)
Ann Waggoner	1991, No. 3 (D)

**ACC Flight Champions**

Elke Juul	1993, No. 3 (D) 1994, No. 1 (D) 1996, No. 1 (D)
Sandi Ecclestone	1993, No. 3 (D)
Audra Brannon	1994, No. 1 (S) & No. 1 (D)
Lori Sowell	1994, No. 2 (S) 1996, No. 1 (D)
Ashley Delaney	1995, No. 3 (D)
Lori Junker	1995, No. 3 (D) 1996, No. 3 (D)
Ann Olsson	1996, No. 3 (S) & No. 2 (D)
Sasha Hanna	1996, No. 2 (D)
Kylie Thompson	1996, No. 3 (D)
Ali Weber	1997, No. 5 (S) 1999, No. 6 (S) 2000, No. 6 (S) & No. 3 (D)
Jessica Balbuena	2000, No. 3 (D)

**Miscellaneous Honors**

Buffy Baker	1988 Roberta Allison Southern Intercollegiate (champion, No. 1 singles) 1989 Roberta Alison Southern Intercollegiate (champion, No. 1 singles) 1989 Women's Intercollegiate Championships (champion, No. 1 singles)
Christina Denny	2003 Lady Seminole Fall Classic Champion (Flight B - singles)
Anca Dumitrescu	2003 Lady Seminole Fall Classic Champion (Flight A - singles)
Nanette Duxin	1998 Roberta Allison Invitational (Flight A - singles)
Alida Gallovits	1999 Lady Seminole Classic Champion (Flight A - singles) 2000 Georgia Tech Invite Champion (Flight A-singles) 2000 Hurricane Classic Champion (Flight A-singles) ACC 50th Anniversary Team
Keri Preng	1988 Barnett Bank Women's Intercollegiate State Championships (champion, No. 6 singles)
Laura Sarkilahti	1988 Barnett Bank Women's Intercollegiate State Championships (champion, No. 5 singles)
Lori Sowell	1996 Lady Seminole Classic Champion (Flight A-singles)
Natalie Tirapelli	2003 Roberta Allison Fall Classic (Flight H-singles)
Federica Suess	2011 ACC Post-Graduate Scholarship
Katie Rybakova	2012 ACC Post-Graduate Scholarship



Mia Vriens	2012 State of Florida Championships Sportsmanship Award
Amy Sargeant	ITA Southeast Region Cissie Leary Award for Sportsmanship

### Team MVP's

1997	Lori Sowell
1998	Ali Weber
1999	Marina Raic and Kia Asberg
2000	Kia Asberg
2001	Alida Gallovits
2002	Christina Denny
2003	Anca Dumitrescu
2004	Mihaela Moldovan
2005	Mihaela Moldovan
2006	Nicola Slater
2007	Caroline Walter and Lauren Macfarlane
2008	Federica Suess
2009	Ania Rynarzewska and Jessica Sucupira
2010	Lauren McCreless
2011	Team
2012	Amy Sargeant
2013	Amy Sargeant
2014	Kerrie Cartwright and Daniela Schippers
2015	Gabriella Castaneda

### POSTSEASON INVITATIONS

#### Association of Intercollegiate Athletics for Women

Team	1984
	AT&W National Championships - 6th
Doubles	1982 - AT&W All-Region II Team
	Jaime Kaplan & Suzanne Dourmar

### NCAA

#### Singles

Jaime Kaplan	1983
Audra Brannon	1993-94
Lori Sowell	1994-96
Alida Gallovits	2000-01
Anca Dumitrescu	2002, 04
Mihaela Moldovan	2005
Katie Rybakova	2008-09, 11
Noemie Scharle	2009, 11

#### Doubles

Jaime Kaplan/Lee McGuire	1983
Patti Henderson/Sue Hatch	1985
Audra Brannon/Laura Randmaa	1993
Audra Brannon/Elke Juul	1994
Elke Juul/Lori Sowell	1995-96
Mihaela Moldovan/Lindsay Deason	2005
Lauren Macfarlane/Nicola Slater	2007
Kerrie Cartwright/Daneika Borthwick	2014

#### FSU's Golden Torch Award (Highest Individual GPA)

Nicki Ivy	1991
Amy Hanby	1992-93
Ashley Delaney	1994
Kia Asberg	2000
Alida Gallovits	2001
Marina Raic	2002
Mihaela Moldovan	2003
Lisa Nystrom Skold	2006
Katie Rybakova	2008-10

Leyla Erkan	2011-12
Amy Sargeant	2013
Mia Vriens	2014
Daneika Borthwick	2015

### Metro Conference Commissioner's List

Claudia Gaughf	1985
Sue Hatch	1985-86
Kirsten Turk	1986-89
Chris Joyce	1986-88
Jill Urban	1986-87
Keri Preng	1989
Kirsten Balser	1989-90
Lori Webster	1990
Shana Nozick	1990
Christina Tee	1990

### ACADEMIC HONORS

#### ACC Academic Honor Roll

Kia Asberg	1998-00
Buffy Baker	1992
Jessica Balbuena	1999-01
Daneika Borthwick	2012-15
Natalie Carratalá	1998-99, 01
Kerrie Cartwright	2014-15
Nicole Cercone	2004
Brooke Cordell	2002-04
Lindsay Deason	2004
Ashley Delaney	1994-97
Carolina De Los Santos	2012
Christina Denny	2000-04
Anca Dumitrescu	2001-04
Nanette Duxin	1999-02
Sandi Ecclestone	1994
Leyla Erkan	2012-13
Meredith Fish	2001-02
Alida Gallovits	1999, 01-02
Amy Hanby	1992-93
Sasha Hanna	1997-98
Nicki Ivy	1992
Lori Junker	1995-97
Elke Juul	1996
Helena Karlsson	1998
Beth Lawrence	2000-03
Lauren Macfarlane	2007, 10
Tapiwa Marobela	2008
Alina Mihailescu	2002-04
Mihaela Moldovan	2002-04
Laura Randmaa	1994
Ann Olsson	1997
Rakina Payne	1997-98
Kathryn Phillips	2015
Marina Raic	1999-01
Lana Rush	2015
Katie Rybakova	2009-11
Ania Rynarzewska	2006-08
Sheena Sanil	2012
Amy Sargeant	2011-13
Noemie Scharle	2010-13
Daniela Schippers	2015
Kristina Schleich	2013
Ruth Seaborne	2012
Francesca Segarelli	2012-13
Casey Simmons	2012
Nicola Slater	2007
Lori Sowell	1994-97

Jessica Sucupira	2008, 10
Federica Suess	2008, 10-11
Amberly Tantee	2004
Chrissie Tee	1992
Kylie Thompson	1996-99
Natalie Tirapelli	2002-04
Christy Travis	1998-99, 01
Brittany Veal	2001-03
Mia Vriens	2012-15
Lauren Walker	2001-02
Caroline Walter	2008
Ali Weber	1997-00

### ITA Scholar-Athletes

Daneika Borthwick	2014-15
Kerrie Cartwright	2015
Brooke Cordell	2004
Lindsay Deason	2004
Carolina De Los Santos	2012
Christina Denny	2004
Anca Dumitrescu	2004
Leyla Erkan	2012-13
Miranda Foley	2006
Alida Gallovits	2002
Elizabeth Lawrence	2002
Tapiwa Marobela	2008
Alina Mihailescu	2004-06
Mihaela Moldovan	2004
Lisa Nystrom-Skold	2006
Kathryn Phillips	2015
Katie Rybakova	2008-09, 11
Ania Rynarzewska	2006, 08-09
Duda Santos	2014
Amy Sargeant	2012-13
Noemie Scharle	2011-12
Daniela Schippers	2015
Kristina Schleich	2013-14
Francesca Segarelli	2012-13
Jessica Sucupira	2009
Federica Suess	2008, 11
Amber Tantee	2004
Mia Vriens	2013-15

### CoSIDA Academic All-District III Team

Mihaela Moldovan	2004-05
------------------	---------

### All-ACC Academic Team

Daneika Borthwick	2013-15
Kerrie Cartwright	2014
Carolina De Los Santos	2012
Lauren Macfarlane	2007
Katie Rybakova	2008-11
Ania Rynarzewska	2006, 08-09
Amy Sargeant	2012-13
Noemie Scharle	2009, 11
Daniela Schippers	2015
Francesca Segarelli	2012-13
Nicola Slater	2007
Jessica Sucupira	2010
Federica Suess	2011
Mia Vriens	2015





### A NOTE TO THE MEDIA, FANS AND OPPONENTS

Florida State Sports Information assistant Steven McCartney can assist with any questions or requests regarding the 2016 Florida State women's tennis program, almanac, coaches or student-athletes.

#### Steven McCartney

Florida State SID Assistant/Men's & Women's Tennis  
(850) 322-6711 - cell  
smccartney@fsu.edu

### PLAYERS & COACHES INTERVIEWS

All players and coaches interviews should be arranged through the sports information office by contacting Steven McCartney at (850) 322-6711 at least 24 hours in advance. Student-athlete's phone numbers will not be released. Media may not contact any student-athlete through the use of social media, including Facebook and Twitter.

### HOW TO COVER THE SEMINOLES

Members of the media are supplied with weekly press releases, including updated statistics, as well as conference and national rankings and information on upcoming matches. This information may be obtained in the sports information office and will be updated after every match at [www.seminoles.com](http://www.seminoles.com).

### WHERE THE HOME MATCHES WILL BE

All 2016 tennis matches take place at the Scott Speicher Tennis Center or the Indoor Tennis Facility. Media should notify the sports information office prior to home matches if they plan to attend. Any accredited photographer wishing to shoot the matches must check in with Steven McCartney prior to the match.

### FSU ON THE WEB

The official web site of Florida State women's tennis is [www.Seminoles.com](http://www.Seminoles.com). Once there, you can access player and teams stats, weekly releases, match recaps, photo galleries, and live stat links. Additionally, keep up with the 'Noles via social media on Twitter (@FSU\_WTennis) and Facebook (Facebook.com/FSU.WTennis).

## SPORTS INFORMATION DIRECTORY



**Steven McCartney**  
Sports Information Assistant  
Men's & Women's Tennis

#### Mailing Address

FSU Sports Information  
P.O. Drawer 2195  
Tallahassee, Fla. 32316

#### Shipping Address

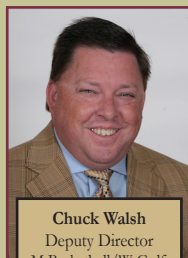
403 W. Stadium Drive  
Room D-107  
Tallahassee, Fla. 32306

Phone  
(850) 644-1403

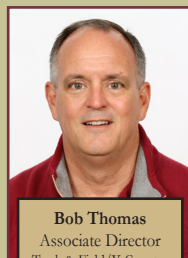
Fax  
(850) 644-3820



**Elliott Finebloom**  
Assistant AD  
SID & Digital Media



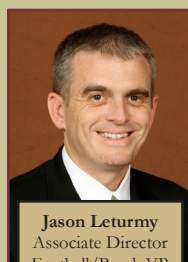
**Chuck Walsh**  
Deputy Director  
M Basketball/W Golf



**Bob Thomas**  
Associate Director  
Track & Field/X Country



**Zach Stipe**  
Director of Football  
Communications



**Jason Leturmy**  
Associate Director  
Football/Beach VB



**Jon Cole**  
Assistant Director  
Baseball/Volleyball



**Scott Moriak**  
Assistant Director  
Soccer/Softball



**Christa Salerno**  
Assistant Director  
Swimming & Diving



**Steve Stone**  
Assistant Director  
W Basketball/M Golf

# 2016 SCHEDULE

1/16	at Old Dominion	Norfolk, Va.	3/27	Virginia*	Tallahassee, Fla.
1/18	at Tulane	New Orleans, La.	3/27	Troy	Tallahassee, Fla.
1/22	vs. Mississippi State <sup>1</sup>	Durham, N.C.	4/1	at Notre Dame*	South Bend, Ind.
1/23	vs. Portland <sup>1</sup>	Durham, N.C.	4/3	at Syracuse*	Syracuse, N.Y.
1/30	vs. SC State	Jacksonville, Fla.	4/8	at NC State*	Raleigh, N.C.
1/30	at North Florida	Jacksonville, Fla.	4/10	at Wake Forest*	Winston-Salem, N.C.
2/4	Florida	Tallahassee, Fla.	4/15	Louisville*	Tallahassee, Fla.
2/20	Navy <sup>2</sup>	Tallahassee, Fla.	4/17	Pittsburgh* <sup>3</sup>	Tallahassee, Fla.
2/20	Florida A&M <sup>2</sup>	Tallahassee, Fla.			
2/26	at Duke*	Durham, N.C.	4/20-24	ACC Tournament	Cary, N.C.
2/28	at North Carolina*	Chapel Hill, N.C.	5/13-15	NCAA Regionals	Campus Sites
3/2	Miami*	Tallahassee, Fla.	5/19-24	NCAA Championships	Tulsa, Okla.
3/12	at Clemson*	Clemson, S.C.	5/25-6/1	NCAA Singles/Doubles	Tulsa, Okla.
3/12	at Wofford	Spartanburg, S.C.			
3/18	Georgia Tech*	Tallahassee, Fla.			
3/20	Virginia Tech*	Tallahassee, Fla.			
3/25	Boston College*	Tallahassee, Fla.			

<sup>1</sup>ITA Kick-Off Weekend; <sup>2</sup>Military Appreciation Day; <sup>3</sup>Senior Day; \*ACC Match

