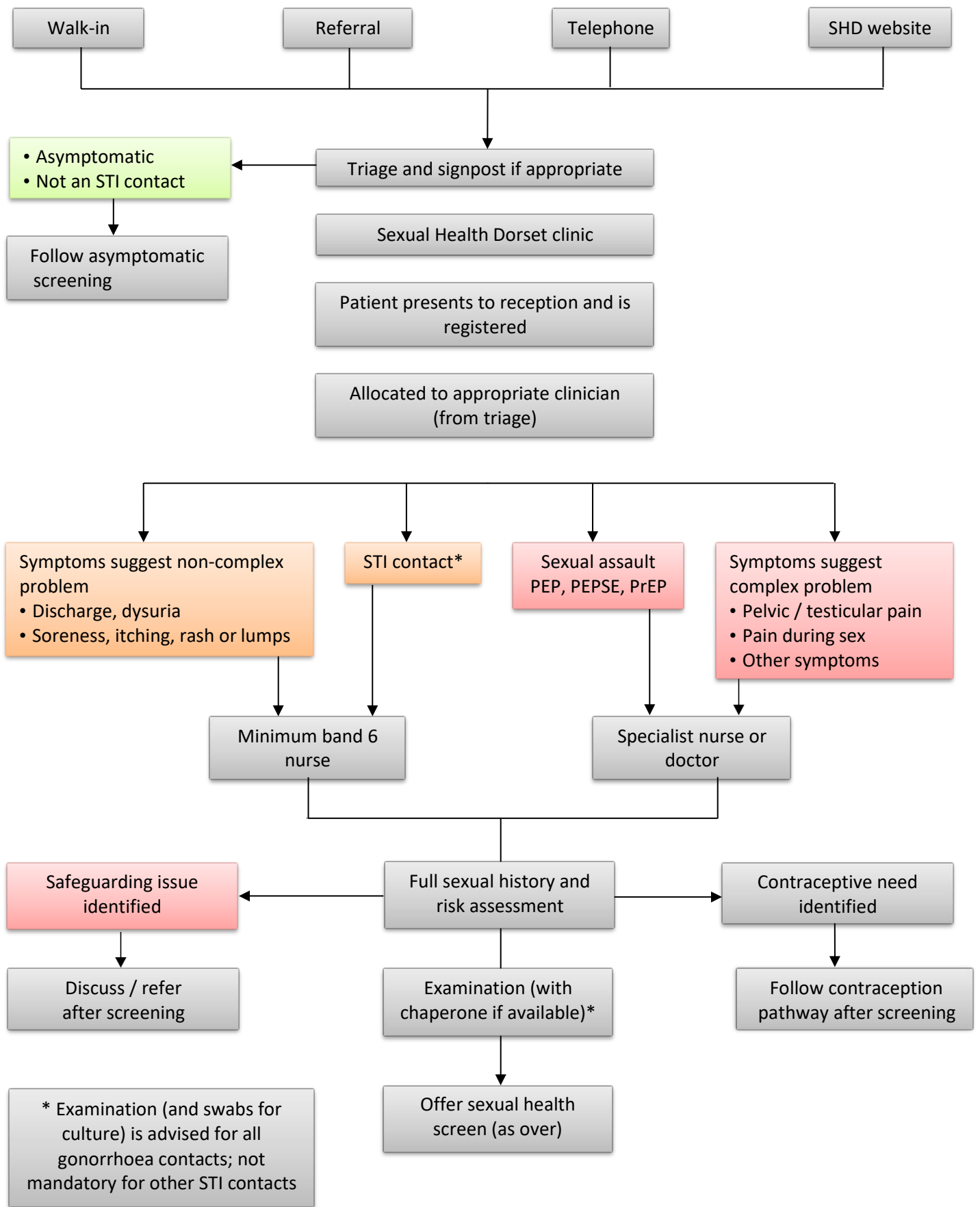


Pathway for Screening in Patients with Symptoms: Triage and Assessment



Pathway for screening in patients with symptoms: testing

Test	Female	Heterosexual male	MSM
Chlamydia / gonorrhoea (CT/GC NAAT)	All <ul style="list-style-type: none"> Vaginal swab (urine less sensitive for GC) +/- urine if has dysuria 	All <ul style="list-style-type: none"> Urine – first pass 	All <ul style="list-style-type: none"> Urine – first pass Throat swab Rectal swab
GC culture (direct plating or E-swab)	GC contact <ul style="list-style-type: none"> Cervical swab 	GC contact or purulent urethral discharge <ul style="list-style-type: none"> Urethral swab 	GC contact or purulent urethral or rectal discharge <ul style="list-style-type: none"> Urethral swab Throat swab Rectal swab
Microscopy (where available)	GC contact Vaginal or cervical discharge, cervicitis, post-coital bleeding, pelvic pain <ul style="list-style-type: none"> Cervical swab High vaginal swab 	GC contact, dysuria, mucoid or purulent urethral discharge, meatitis on examination <ul style="list-style-type: none"> Urethral swab 	GC contact, dysuria, mucoid or purulent urethral or rectal discharge, meatitis <ul style="list-style-type: none"> Urethral swab Rectal swab
MC&S (charcoal swab)	Vaginal or cervical discharge, cervicitis, post-coital or inter-menstrual bleeding, pelvic pain <ul style="list-style-type: none"> High vaginal swab 		
HSV PCR	Ano-genital ulceration <ul style="list-style-type: none"> All relevant sites 	Ano-genital ulceration <ul style="list-style-type: none"> All relevant sites 	Ano-genital ulceration <ul style="list-style-type: none"> All relevant sites
STS, HIV Ab/Ag	All	All	All
HBsAg or anti-HBc	Sex worker Sexual assault Risk from Africa, SE Asia, Eastern Europe, Caribbean	Sexual assault Risk from Africa, SE Asia, Eastern Europe, Caribbean	Sex worker Sexual assault Risk from Africa, SE Asia, Eastern Europe, Caribbean
Hepatitis C Ab	IDU	IDU	IDU Chemsex

[BASHH summary guidance on testing for STIs 2015](#)

[BASHH recommendations for testing for STIs in MSM 2014](#)

Window periods:

- 2 weeks for CT / GC NAAT
- 4-8 weeks for HIV AB/Ag and syphilis Ab
- Up to 12 weeks for HBsAg and hepatitis C Ab
- 8-21 weeks for anti-HBc

In general, do not defer testing until after the window period, as the patient may have had a prior risk and / or may not return for testing.

Other information:

- What we test for
- How we test
- Confidentiality of testing
- How results will be given
- Advice and information as appropriate - safer sex, contraception, lifestyle ([LiveWell Dorset](#))
- Arrange follow-up if needed