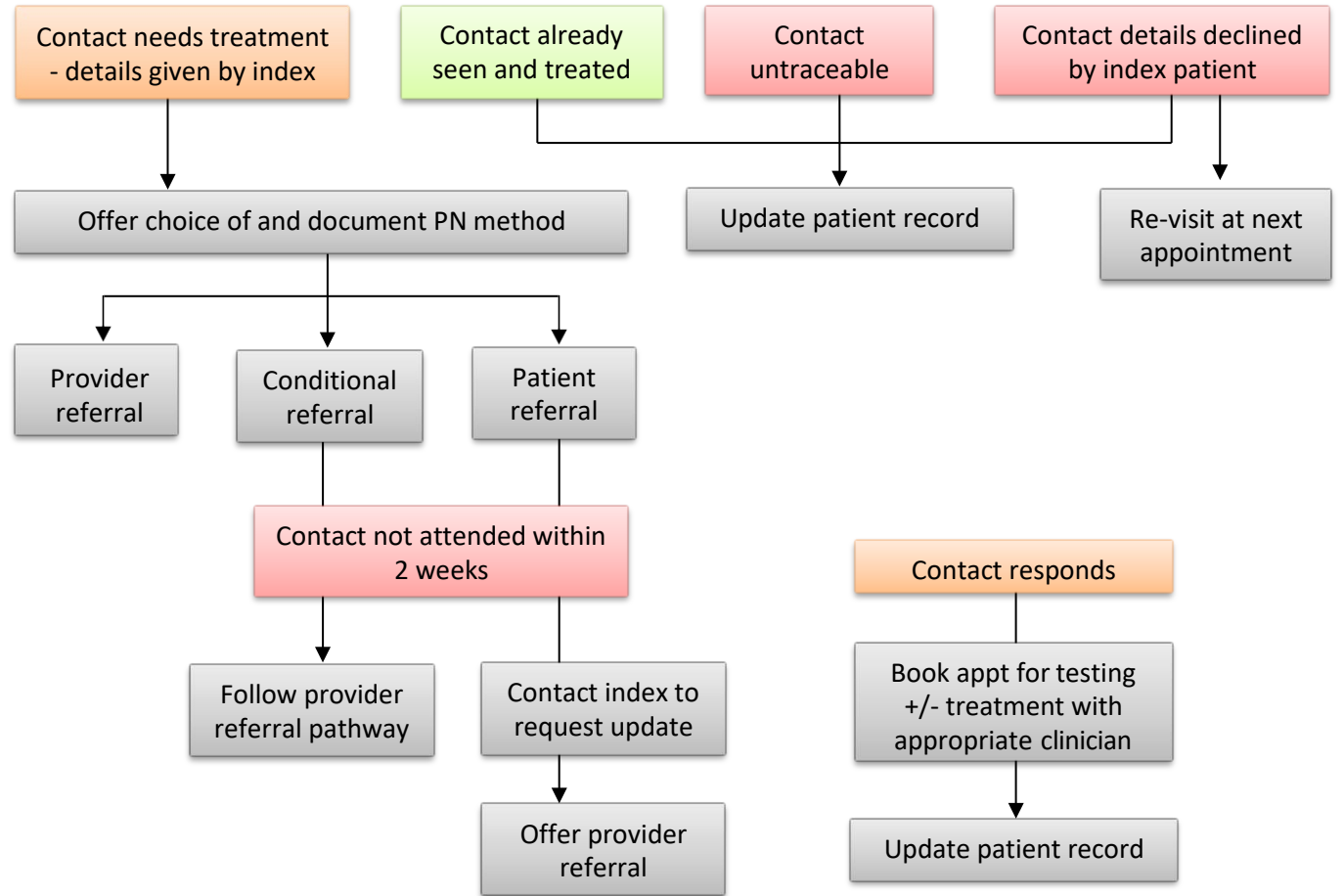
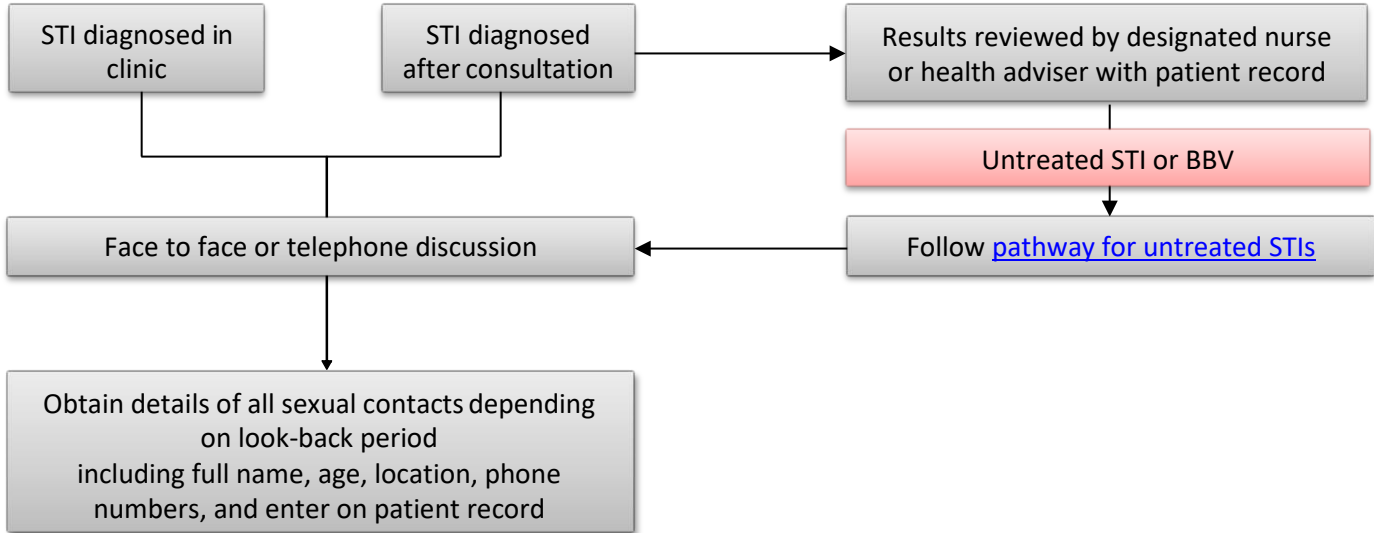
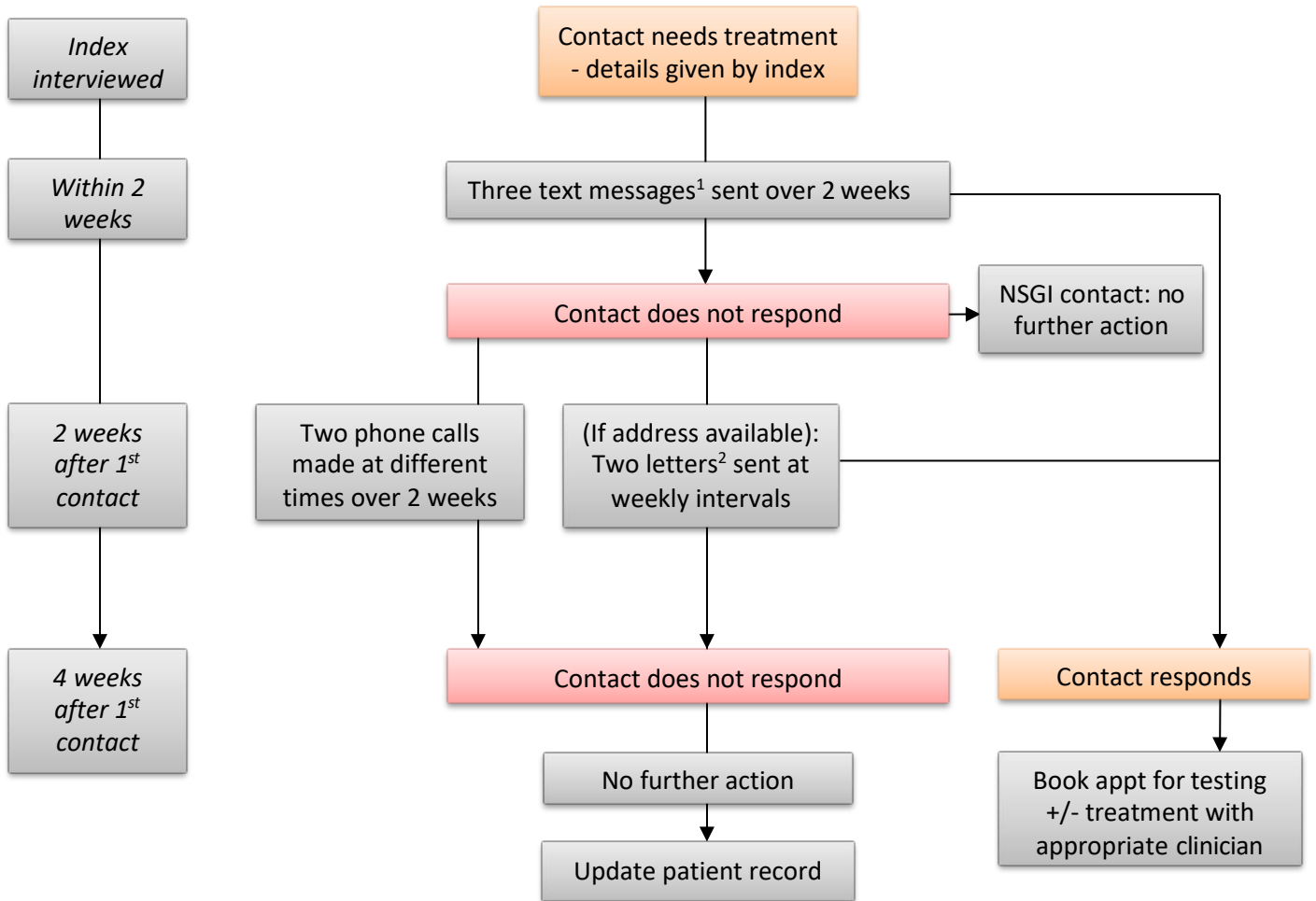


Pathway for Partner Notification

Positive STI result – chlamydia, NSGI, gonorrhoea, trichomoniasis, syphilis, HIV



Pathway for Partner Notification (PN): Provider Referral Pathway



¹Text messages:

Text 1: "Please phone the clinic on (phone no)"

Text 2: "Your name has been given as a possible contact of a person with a treatable sexually transmitted infection. Please call (phone no) to arrange an appointment"

Text 3: "Your name has been given as a possible contact of a person with a sexually transmitted infection. This could have serious consequences if not treated. Please call (phone number) to arrange an appointment"

²Letters:

Letter 1: "Your name has been given as a possible contact of a person with a treatable sexually transmitted infection. Please call (phone no) to speak to one of the health advisers and arrange an appointment. Please bring this letter with you when you attend."

Letter 2: "Your name has been given as a possible contact of a person with a sexually transmitted infection. This usually does not cause any symptoms, so you are unlikely to know whether you have an infection without being tested. It could have serious consequences if not treated. Please call (phone no) to speak to one of the health advisers and arrange an appointment. Please bring this letter with you when you attend."

Pathway for Partner Notification (PN): Look Back Periods

Infection	Sub-group	Look back	Epidemiological Rx?
Chlamydia (including complicated infection)	Male index case with urethral symptoms	4 weeks prior to symptoms	Yes
	All others	6 months prior to onset of symptoms or presentation	Yes
NSGI (including PID and epididymitis)	Male index case with urethral symptoms	4 weeks prior to symptoms	Yes
	All others	6 months prior to symptoms or presentation	Yes
Gonorrhoea	Male index case with urethral symptoms	2 weeks prior to symptoms	Yes
	All others	3 months prior to symptoms or presentation	Yes
Trichomoniasis	All	4 weeks prior to presentation	Yes
Syphilis	Primary syphilis	3 months prior to symptoms	Yes
	Secondary and early latent syphilis	2 years prior to symptoms or presentation	Yes
	Late latent and late syphilis	Date of last negative STS if available If not – as far back as possible	No
HIV	Likely date of infection identified	3 months prior to likely date of infection	No
	Likely date of infection not identified	As far back as possible	No
Hepatitis B	Jaundice	2 weeks prior to the onset of jaundice	No
	No jaundice	As far back as when the infection is thought to have been acquired	No
Mycoplasma Genitalium	All	Current partner(s) including non-regular partners where there is likely to be ongoing sexual contact.	No
Other sexually transmissible infections		See BASHH statement	

[BASHH statement on partner notification for STIs 2012](#)
[SSHA guidance on partner notification 2015](#)