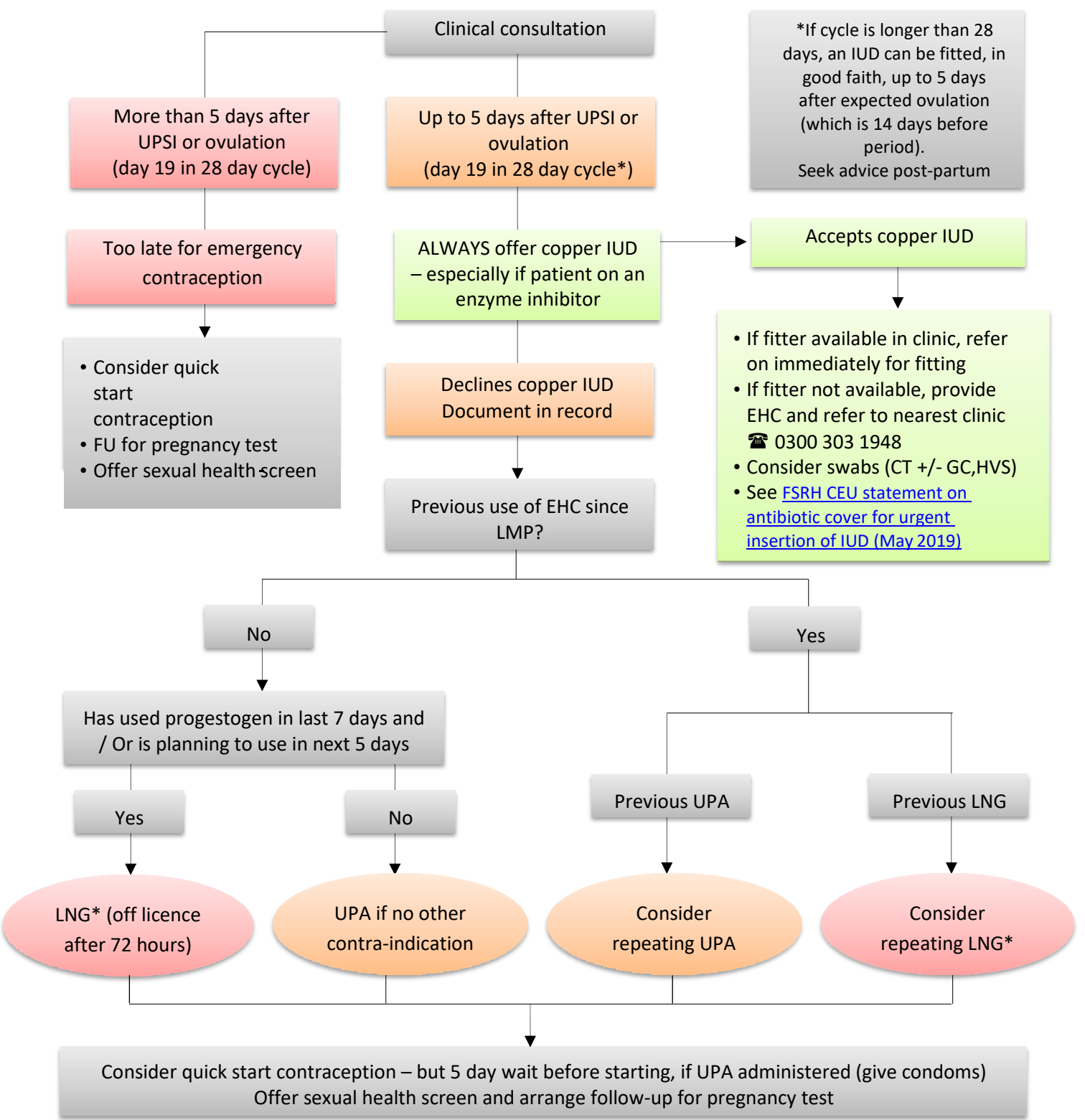


Pathway for Emergency Contraception



UPA is the preferred choice of EHC unless the woman has taken progestogen in the last 7 days and / or is planning to take progestogen in the next 5 days. May be less effective if wt >85kg or BMI >30. Double dose UPA is not recommended.

* Ineffective after 96 hours. Use double dose LNG if wt >70kg, BMI>26 or on enzyme inducer.

UPSI: unprotected sexual intercourse
IUD: intrauterine device
EHC: emergency hormone contraception
LMP: last menstrual period
LNG: levonorgestrel / Levonelle / Upostelle
UPA: ulipristal acetate / EllaOne