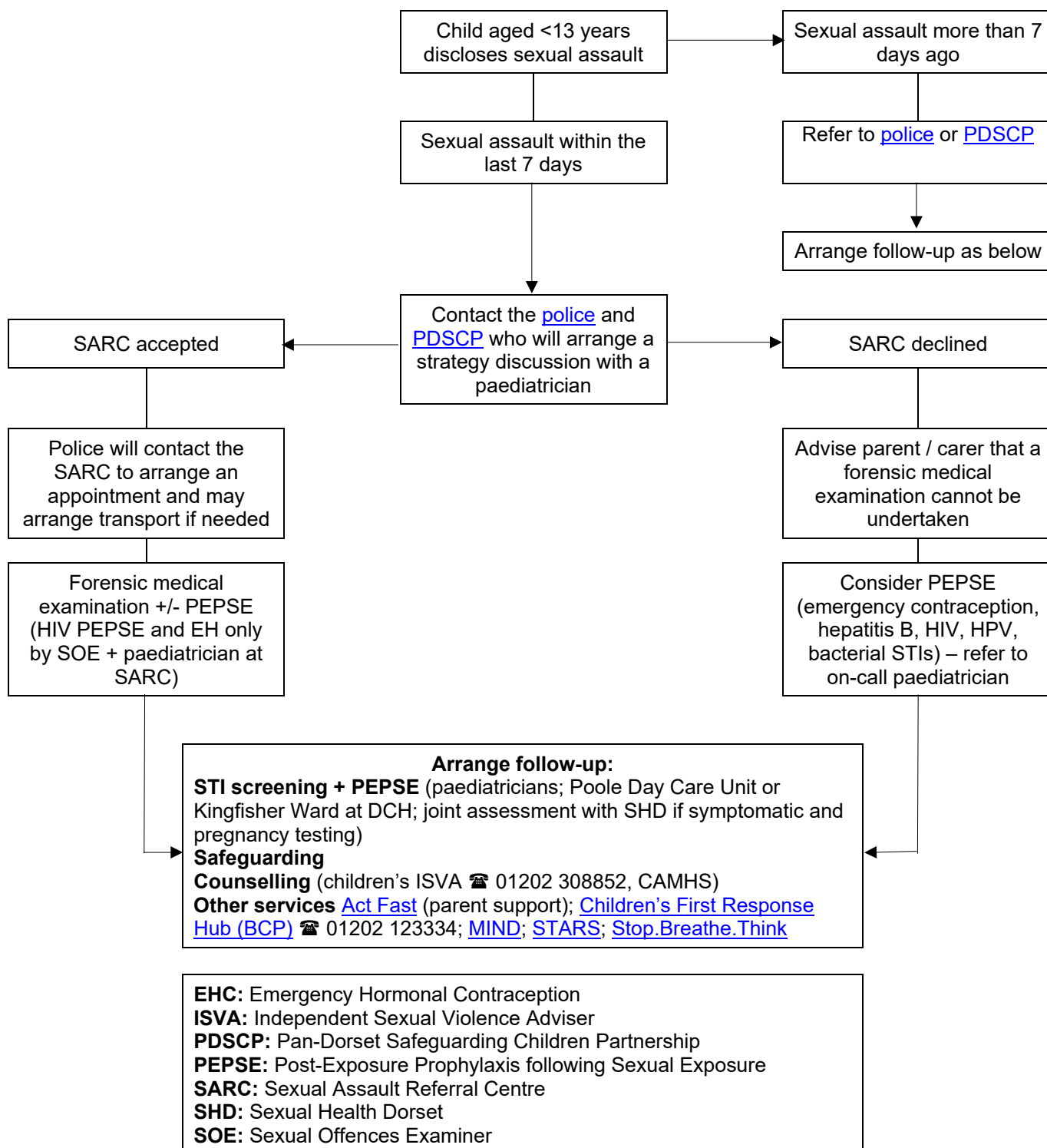


## Referral Pathway for Victims of Sexual Assault Aged Under 13 Years



**Arrange follow-up:**

**STI screening + PEPSE** (paediatricians; Poole Day Care Unit or Kingfisher Ward at DCH; joint assessment with SHD if symptomatic and pregnancy testing)

**Safeguarding**

**Counselling** (children's ISVA ☎ 01202 308852, CAMHS)

**Other services** [Act Fast](#) (parent support); [Children's First Response Hub \(BCP\)](#) ☎ 01202 123334; [MIND](#); [STARS](#); [Stop.Breathe.Think](#)

**EHC:** Emergency Hormonal Contraception  
**ISVA:** Independent Sexual Violence Adviser  
**PDSCP:** Pan-Dorset Safeguarding Children Partnership  
**PEPSE:** Post-Exposure Prophylaxis following Sexual Exposure  
**SARC:** Sexual Assault Referral Centre  
**SHD:** Sexual Health Dorset  
**SOE:** Sexual Offences Examiner