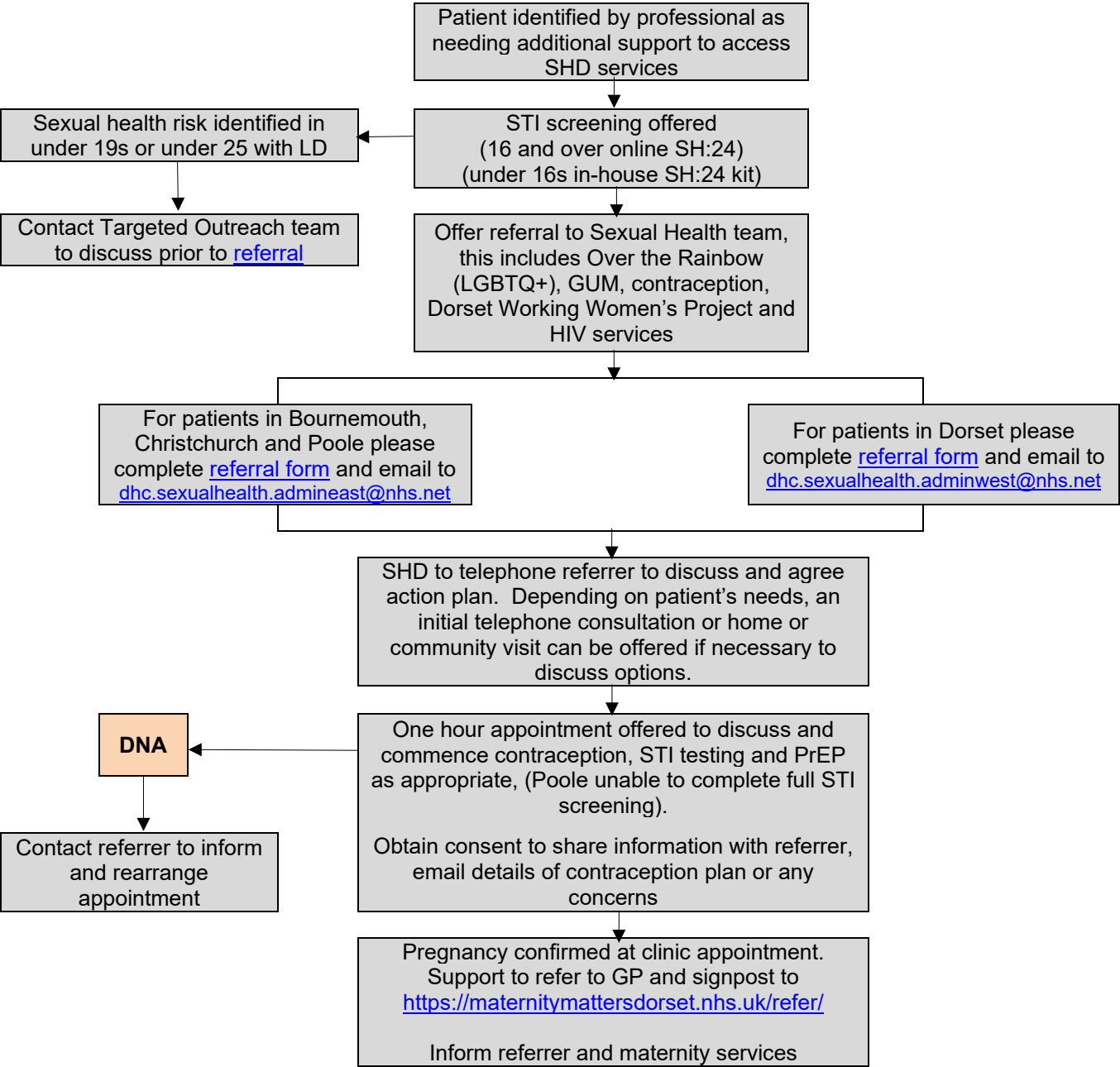


Pathway for Vulnerable Patients



Pathway for Vulnerable Patients: Contacts and Resources

Sexual Health Dorset Contacts

Referrals for Bournemouth and Poole clinics:

Email: dhc.sexualhealth.admineast@nhs.net

Referrals for Blandford, Bridport and Weymouth clinics:

Email: dhc.sexualhealth.adminwest@nhs.net

Link Nurses: Jill Hanna, Jo Webber

Pan Dorset Contacts:

Safeguarding Lead: Jo Goodman Email: joanne.goodman1@nhs.net

SHD Medical Lead: Dr Kate Schroeder

All clinics tel: 0300 303 1948

Chat Sexual Health (13-24 year olds): 07312 263 101

Midwifery Contacts

<https://maternitymattersdorset.nhs.uk/refer/>

Bournemouth, Christchurch and Poole areas:

Email: oasis@uhd.nhs.uk

Tel: 0300 019 3753 / 8459

Safeguarding Lead Midwife – kerry.medina@uhd.nhs.uk

West Dorset Mental Health Midwifery Team Lead: michelle.dugmore@dchft.nhs.uk

East Dorset Perinatal Mental Health Lead Midwifery: emily.seddon@uhd.nhs.uk

Targeted Outreach Service Contacts

<https://sexualhealthdorset.org/information/professionals/targeted-outreach-service/>

Clinical Lead: Sara Bedford Email: s.bedford@nhs.net Tel: 07342 088896

Resources

FSRH Clinical Guidance: contraception after pregnancy (Jan-2017, amended Oct-2020)

<https://www.fsrh.org/standards-and-guidance/documents/contraception-after-pregnancy-guideline-january-2017/>

FSRH Clinical Guidance: contraceptive choices for young people (Mar-2010, amended May-2019)

<https://www.fsrh.org/standards-and-guidance/documents/cec-ceu-guidance-young-people-mar-2010/>

FSRH Clinical Guidance on Contraception: method specific

<https://www.fsrh.org/standards-and-guidance/fsrh-guidelines-and-statements/method-specific/>

Sexual Health Dorset website

<https://sexualhealthdorset.org>