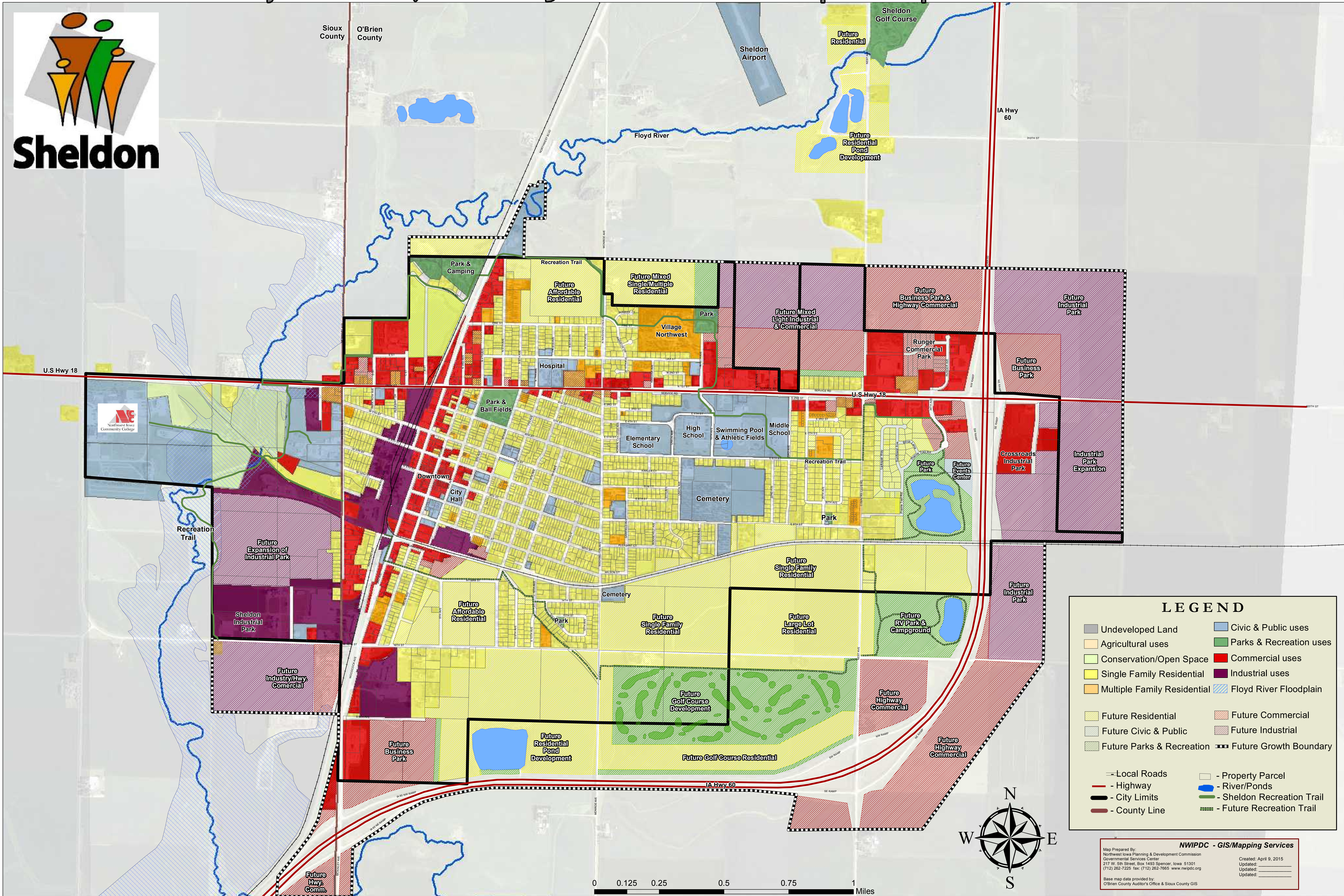
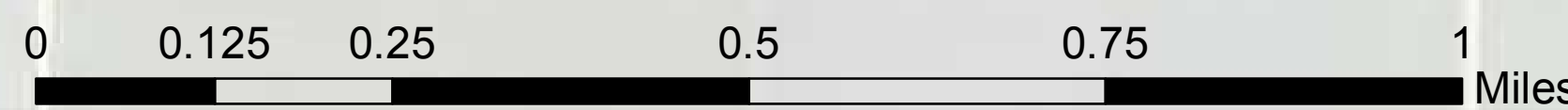


# City of Sheldon, Iowa 2030 Future Land Use Map Comprehensive Plan



### LEGEND

Undeveloped Land	Civic & Public uses
Agricultural uses	Parks & Recreation uses
Conservation/Open Space	Commercial uses
Single Family Residential	Industrial uses
Multiple Family Residential	Floyd River Floodplain
Future Residential	Future Commercial
Future Civic & Public	Future Industrial
Future Parks & Recreation	Future Growth Boundary
Local Roads	Property Parcel
Highway	River/Ponds
City Limits	Sheldon Recreation Trail
County Line	Future Recreation Trail



**NWIPDC - GIS/Mapping Services**  
 Map Prepared By:  
 Northwest Iowa Planning & Development Commission  
 Governmental Services Center  
 217 W. 5th Street, Box 1483 Spencer, Iowa 51301  
 (712) 262-7225 fax: (712) 262-7665 www.nwipdc.org  
 Created: April 9, 2015  
 Updated: \_\_\_\_\_  
 Updated: \_\_\_\_\_  
 Updated: \_\_\_\_\_  
 Base map data provided by:  
 O'Brien County Auditor's Office & Sioux County GIS