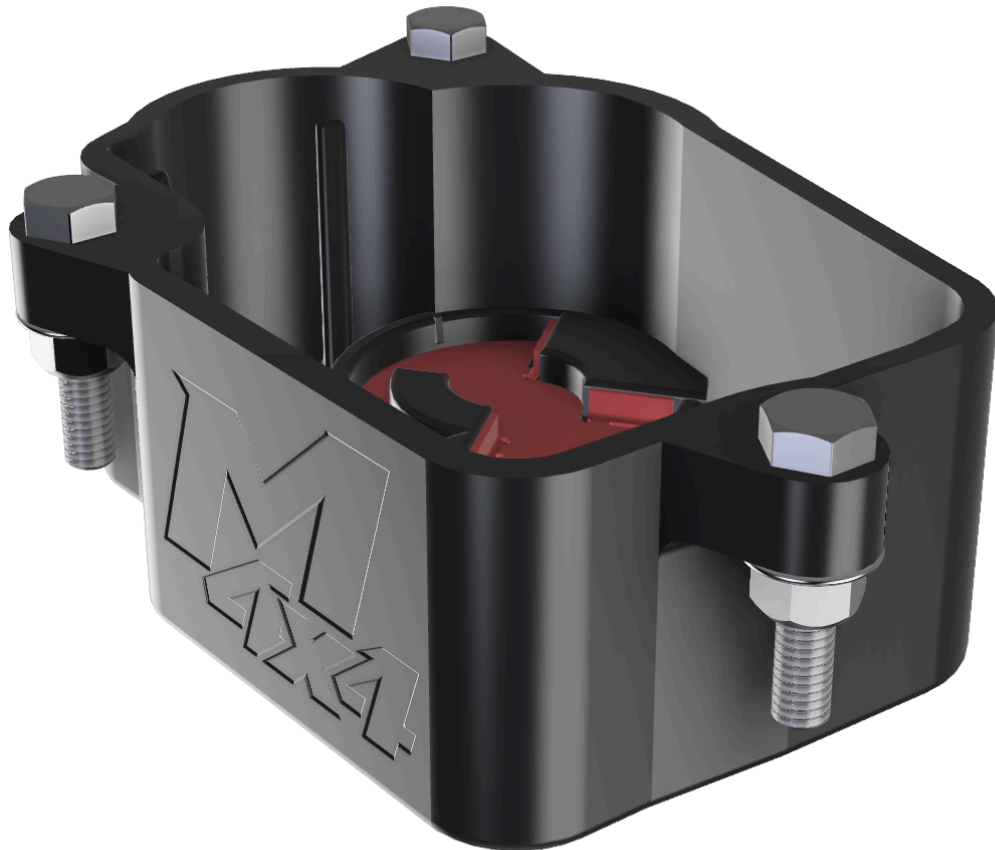


OP-09.02.01 - Exhaust Actuator Housing for SILVERADO V2



Instructions Video - Scan Below



Parts List:

QTY	P/N	Part Name
1	EX-CHSI15-21959	M4x4 - Silverado Exhaust Actuator Housing
1	EX-CHSI15-21960	M4x4 - Silverado Exhaust Actuator Wear Plate
1	CON--22472	M6 x 20mm Hex Head Bolt
3	CON--22473	M6 x 30mm Hex Head Bolt
1	MH--11256	M6 Nylock Nut
3	CON--20898	M6 Flange Nut
1	MH--22474	M6 x 20mm Washer

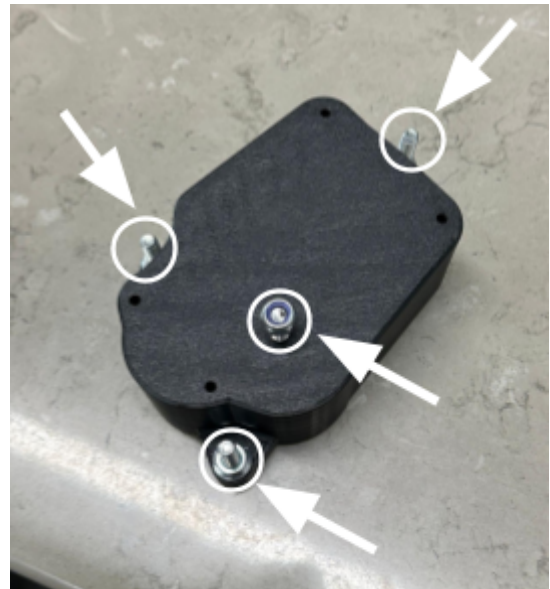
Step 1 / Image 1:

Using a 10mm deep socket, remove the three nuts holding the exhaust actuator from the stock exhaust and unplug it pressing the grey security clip. Don't lose the spring that you'll find inside.



Step 2 / Image 2:

Prepare the housing: Remove the M6 x 30mm bolts and the single nylock and washer you'll find at the bottom.



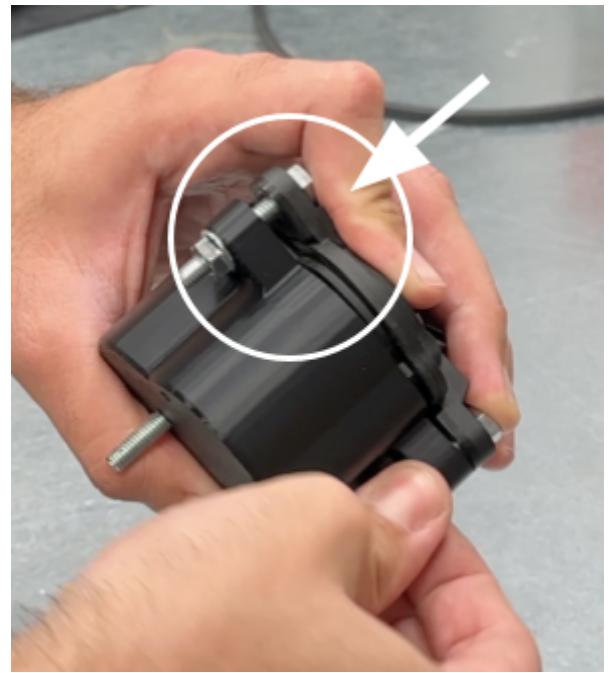
Step 3 / Image 3:

With the actuator's slotted shaft facing you, lightly press the coil in using the image as reference. Double check position before jumping to the next step.



Step 4 / Image 4:

Fit the housing on top of the actuator and hand tighten with the 3 M6 x 30mm bolts and M6 flange nuts, should only require a slight pressure. Leave a 4 to 6 mm gap between both components.



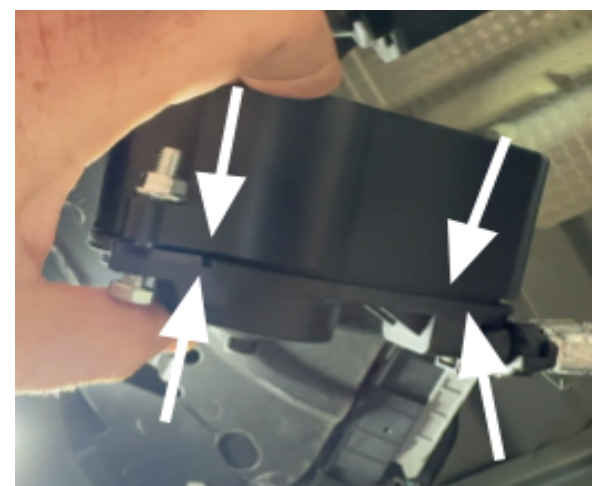
Step 5 / Image 5:

Underneath the vehicle, re-plug the actuator and click the grey safety clip in place.



Step 6 / Image 6:

Turn the vehicle ON for 5 seconds, you'll hear the actuator rotate and the spring will click in place. Both parts should now be able to be compressed against each other.



Step 7 / Image 7:

Using a 10mm deep socket, tighten the 3 M6 x 30mm bolts up to 12Nm while holding the flange nut with your hand.



Step 8 / Image 8:

Slide the housing on top of the indicated heat shield until the M6 x 20mm bolt pokes through the hole.



Step 9 / Image 9:

Fit M6 flat washer + M6 nylock nut on the M6 x 20mm bolt, tighten to 12Nm.

Make sure the actuator's loom is secured.

DONE!

