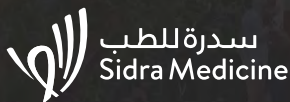




# Simulation Center and Life Support Training Programs

Medical Education  
Department



## Simulation Center

### Facilities and Resources

The Simulation Centre is located on the Mall Level OPC. Additionally, there are Satellite Simulation Suites (Nodes) situated on Level 2 of the hospital building. The main Simulation Centre comprises of multi configurational Simulation Suites (including an operating theatre) with adjacent control rooms and the capacity of 'live feed' to tutorial rooms and 'capture 'through a sophisticated audio-visual system. There is a main conference room able to accommodate up to seventy learners adjacent to a clinical skills teaching area. Alongside this there is the capacity at a later stage of development to accommodate a standardized patient program with allocated space for clinical examination and history taking.

Resources include procedural task trainers for psychomotor skills acquisition including suture, injection pads, peripheral venous cannulation, arterial puncture trainers, PROMPT, pediatric lumbar puncture and tracheal intubation trainers. The department has an inventory of part task trainers available for loan. A combination of low, medium and high technology manikin-based simulators is utilized within the center and satellite suites in accordance with educational needs guided by program objectives. Amalgamation of tools, technology, and fidelity (appropriate realism) assist in providing the optimal learner immersive experience along with faculty expertise in this developing modality.

Sim Capture System is a comprehensive solution for recording, debriefing, and assessing multiple types of simulated scenario encounters. It records multiple feeds digitally, streams highly optimized video for local and remote debriefing, and integrates with the various high technology manikins within the center and satellite rooms. By leveraging the most recent software and computer/ audiovisual hardware technologies, simulation workflow will be more optimal, automated, and customized to the requirement of session objectives. The system carries multiple configurations to 'fine tune' and enhance the immersive simulated scenario experience for both learner and facilitator. This feature will allow event marking for advanced debriefing strategies facilitated by the Simulation team.

## Simulation Center Scope of Service

### Activities

The Simulation Center is dedicated to high quality simulation-based learning based on international best practice standards. Specifically, the staff of the Simulation Center will collaborate with faculty and staff to ensure their curriculum design integrates simulation

opportunities that enhance inter-professional learning, critical skill development and effective team behaviors in a safe, constructive environment and according to the principles of participatory learning.

Full time simulation specialists and technologists are available to ensure that every simulation experience is of the highest quality and achieves all desired academic and performance goals. All instruction is tied to performance outcomes, which encourages the assimilation of concepts in an applied environment and provides the best learning method for the transfer of skills to real world situations.

### Programs

The Sidra Clinical Simulation program provides world-class simulation-based services to:

Sidra staff, external stakeholders, patients, and the regional healthcare community.

The Simulation Department team support both single and double loop learning, training of the teaching faculty, optimizing learner mix including individuals, inter professional groups, teams and other role players to ensure learning; balancing 'in situ', satellite (node) and centre based delivery. Alongside this involvement in research is pivotal and measuring the tangible sources of value.

### The Department of Simulation provides the following services:

- Centre based simulation programs, development through to 'pilot' and inception
- 'In Situ' simulation in collaboration with clinical teams e.g. human factors and team training
- Consultation in line with centers designs, Procurement and Purchase, simulation-based education curriculum development and Faculty development specialized workshops.
- Simulation facilitator development workshop with DASH/RUST model feedback



- AHA Life Support Courses
- 'In Situ' testing of new facilities, devices and systems processes
- 'Mobile' simulation, e.g. multiple patient transfers
- Participation in organizational mock and nationwide drills
- Participation in community and educational activities
- Technical and non-technical Skills development programs
- Part task trainer and low technology manikin loan service
- Participation, consultation regarding programs to address quality and safety as identified through RCA (Root Cause Analysis) process
- Organize & conduct different OSCEs, like MRCPCH, Arab Board, Under-graduate Pediatric OSCE & Post-graduate Residency & Fellows OSCEs





## Main Simulation Facility Floor Plan

The main Simulation Facility state of the art simulation facility that contains multi-purpose training space located in the basement of the Outpatients Clinic.

There are a variety of simulation labs that represent clinical training areas: Operating Theatre, Birthing Suite, Emergency Care Unit, NICU/PICU and general care ward area. There are multiple classroom configurations and some can be partitioned to create smaller or larger training areas. There are also Standardized Patient rooms, debrief rooms and Classroom areas that are all linked through a state-of-the-art simulation management and audio-visual system.

## Main Simulation Facility Floor Plan Basement, Out Patient Clinic



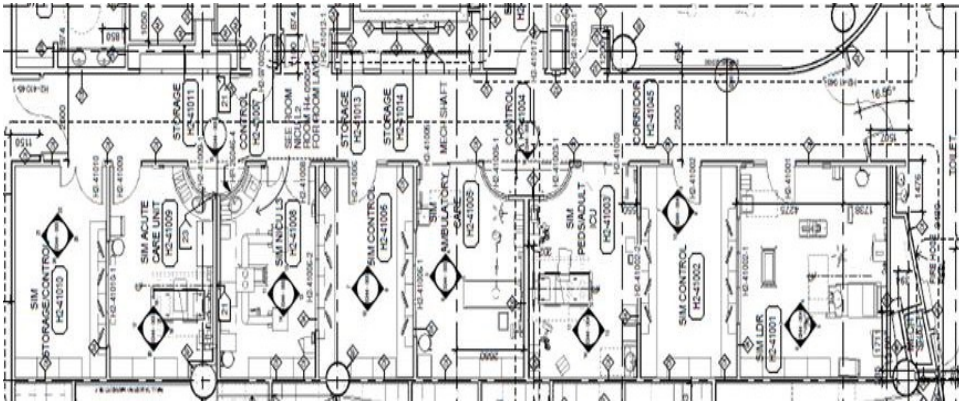
## Interior Design



## Mock Up Rooms

The Mock Up Rooms are replicated hospital room within a dedicated ward on Level 2 of the main hospital building.

### 'Mock-up Rooms' Plan Level 2, Main Hospital Building



## Simulation Links

### Accreditation Programs

- Joint Commission ([JCI](#))
- Society for Simulation in Healthcare ([SSIH](#))

### International Societies

- International Pediatric Simulation Society ([IPSS](#))
- Society in Europe for Simulation Applied to Medicine ([SESAM](#))
- Society for Simulation in Healthcare ([SSIH](#))

### Collaborative Simulation Partners

- Hamad Medical Corporation
- Weill Cornell
- UDST
- Qatar University



**(+974) 4003 3333**  
**Sidra.org**