

NORCALMLK



The Northern California Dr. Martin Luther King, Jr. Community Foundation



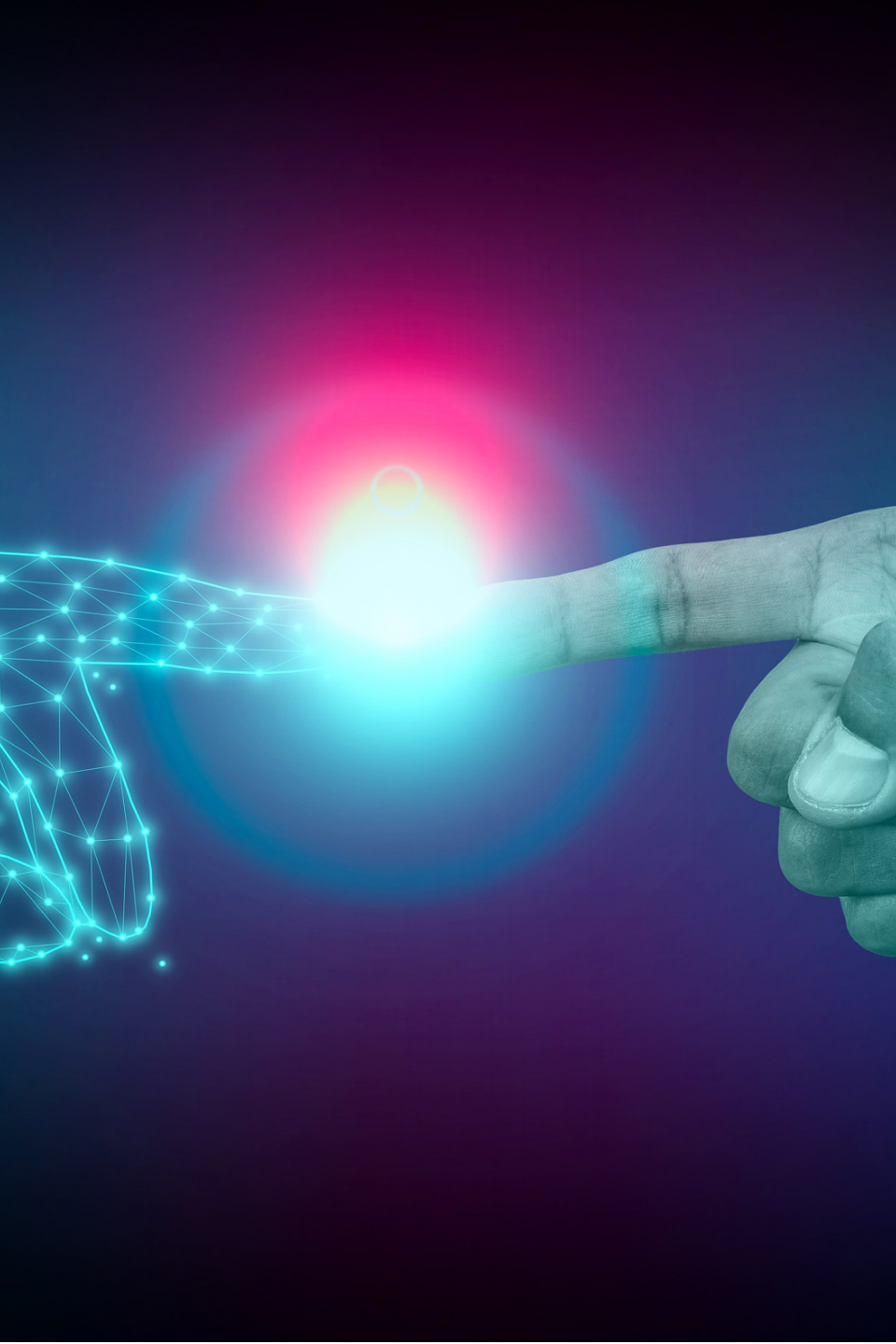
The Center for Social Impact, Development, and Global Engagement



What is the **SIDGE** Center?

The Northern California Dr. Martin Luther King, Jr. Community Foundation is dedicated to justice, wellness, education.

The Center for **S**ocial **I**mpact, **D**evelopment, and **G**lobal **E**ngagement is the NorcalMLK Foundation's new research center at the nexus of ethics and technology.



The **SIDGE** Center Mission

To analyze the intersection of ethics and artificial intelligence that:

- Impacts social challenges;
- Builds decision-making processes; and
- Informs global engagement.

"Our ethical evolution still lags behind our technological revolution...the digital revolution is warped to fit the shape of our still-inequitable world."

Virginia Eubanks, *Automating Inequality: How High-Tech tools Profile, and Punish the Poor* (New York: St. Martin's Press, 2017), 217.

The Problem

AI systems often foster the production of inequitable outcomes.

Why?

There is a missing social and human context in algorithmically driven decision-making that often increases inequity both within and beyond Internet applications.*

* Safiya Umoja Noble, *Algorithms of Oppression: How Search Engines Reinforce Racism* (New York: New York University Press, 2018), 10.





“The near-ubiquitous use of algorithmically driven software, both visible and invisible to everyday people, demands a closer inspection of what values are prioritized in such automated decision-making systems.”

Safiya Umoja Noble, *Algorithms of Oppression: How Search Engines Reinforce Racism* (New York: New York University Press, 2018), 1.

The **SIDGE** Response

The **SIDGE** Center focuses its investigation and training on linking ethical values as data points to algorithmic structures in order to improve equity and the performance of predictive models.



“Problem solving is at the heart of tech. An algorithm...is a set of instructions, rules, and calculations designed to solve problems....[W]hat problem needs solving requires a host of judgments...”

Ruha Benjamin, *Race After Technology: Abolitionist Tools for the New Jim Code* ((Cambridge UK: Polity Press, 2019), 11.

The **SIDGE** Goal

The **SIDGE** Center’s goal is to:

- transform ethics principles into quantifiable data points,
- develop variables from the quantified data (“ethics” variables) for algorithms to improve equitable outcomes, and
- develop testing software utilizing these quantifiable data points to weigh algorithmic models for their equitability



What We're Looking For

- \$1.5MM
 - **SIDGE** Center administration
 - Staffing increases
 - Center infrastructure
 - Office Space
 - Office acquisition
 - Tenant improvement design & buildout
- 12-18 month program run-ramp
 - Formalization of corporate partnerships
 - Formalization of program partnerships (Virginia Tech University, U.C. Berkeley, Stanford University, MIT, Howard University, PIT University Network)

The **SIDGE** Center Roadmap

	Q2/23	Q3	Q4	Q1	Q2	Q3	Q4
Partnerships		2 Tech (identified) 1 FinServ (identified)	1 Tech (identified) 1 FinServ (identified)	1 Tech (secured)	2 Tech (secured) 1 FinServ (secured)	1 FinServ (secured)	1 Tech (identified)
Locations		Acquisition of Primary location	--	--	--	Identification of East Coast location partner	--
Staffing Increases		Office Administrator	--	Quantitative Analyst	PIT SIDGE Fellows (2)	--	--
Media & Research		Social Media Accounts Initiated	--	SIDGE Symposium Jan. 11-12 (tbc)	--	Software alpha development begun	Research Summary #2



"[Mathematical] symbols by themselves can never be enough for mental contents, because the symbols, by definition, have no meaning (or interpretation, or semantics) except insofar as someone outside the system gives it to them." John Searle

Meredith Broussard, *Artificial Unintelligence* (Cambridge, MA: MIT Press, 2018), 38.

Who is the **SIDGE** Center?

The **SIDGE** Center was developed by leading scholars and thinkers, whose core research includes ethics and moral philosophy, critical philosophy, social justice movements, philosophy of religion, and critical theory.

Dwight N. Hopkins

Alexander Campbell Professor
University of Chicago

Areas of Study & Research: Constructive Studies in Religion; Theology.

Professor Hopkins is a constructive theologian working in the areas of contemporary models of theology, various forms of liberation theologies, and East-West cross-cultural comparisons and social entrepreneurship. Professor Hopkins is interested in multidisciplinary approaches to the academic study of religious thought, especially cultural, political, economic, and interpretive methods.

Professor Hopkins initiated and managed a 14-country network, whose work focused on the challenge of the lack of cultural understanding in international transactions of business, politics, and religions. The research indicators revealed that a higher vision and transcendent values glue the global together spiritually with wealth management.

He was Visiting Professor at Renmin (People's) University, Beijing, China. (Course on "The History of Western Civilization") and Visiting Lecturer at Dongbei University of Finance and Economics, Surrey International Institute, Dalian, China (ten lectures on "China and the West: Cross Cultural Communication").



Aaron Grizzell

Executive Director – NorcalMLK Foundation

Areas of Study & Research: History of Religions; Philosophy of Religion.

Mr. Grizzell's experience spans over 25 years in civic and social justice, public policy, and economic development. His primary areas of focus include the connection of the theoretical structure of religious emergence, the philosophical examinations of Dr. King, Howard Thurman, and Mohandas K. Gandhi, as well as the critical philosophy and the philosophical theology of Immanuel Kant. He is a member of the American Academy of Religion (AAR), as well as the Arts of Interpretation group of AAR.

As head of the NorcalMLK Foundation, he is co-founder and convenor of the NorcalMLK King & Faith Series and convenor of the Ethics, Religion, and Climate Change Roundtable, an official program of the California governor's Global Climate Action Summit.

He is founding administrator of the Tabernacle Community Development Corporation and serves on the boards of directors of Yerba Buena Arts & Events (president) and the Yerba Buena Gardens Conservancy. Mr. Grizzell is also a past member of San Francisco's Local Homeless Coordinating Board.





Contact Us

For more information or partnerships:

- Contact: NorcalMLK Fund Development
- Email: sidge@norcalmlkfoundation.org
- Phone: 415-857-0595
- Web: norcalmlkfoundation.org/sidge