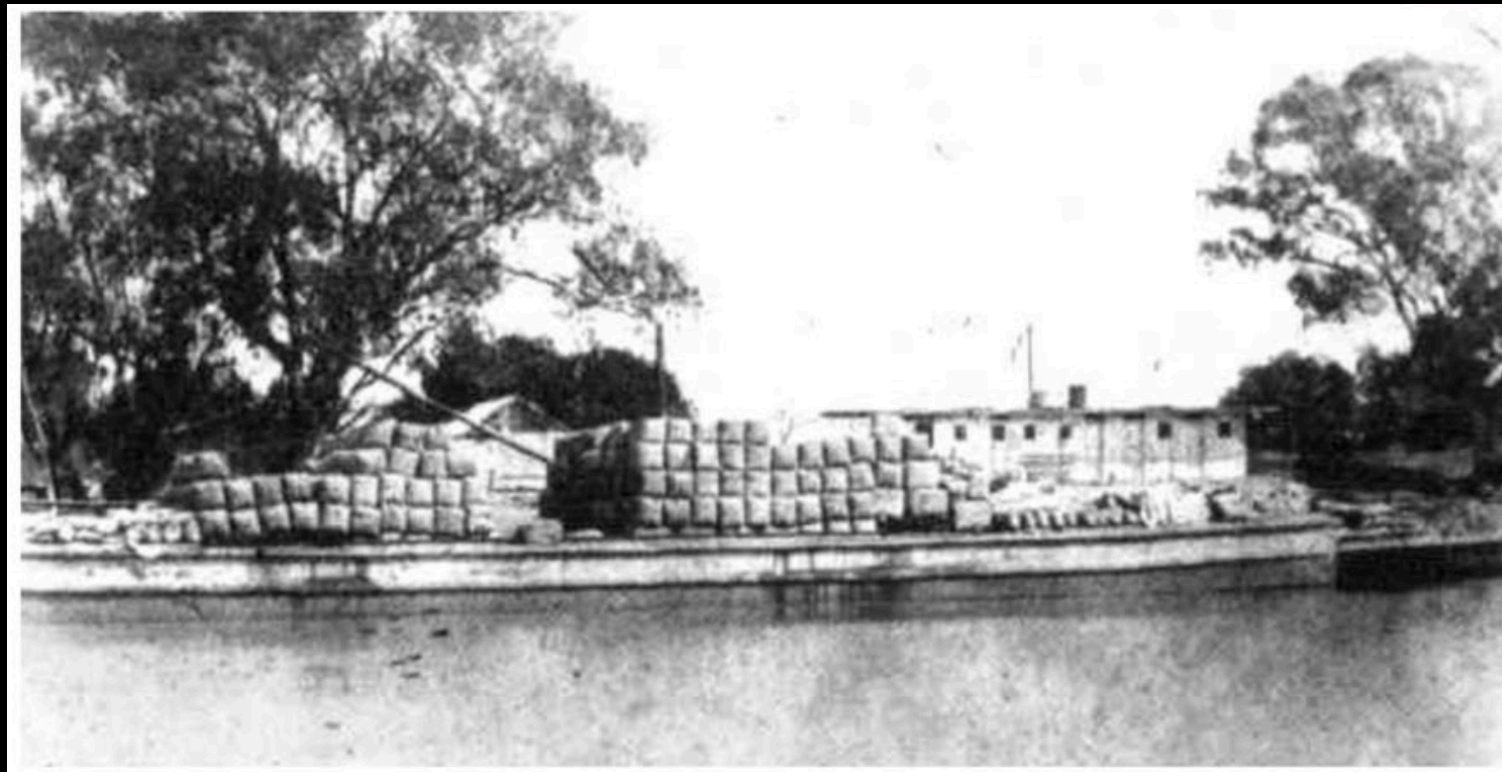


Crowie project



Flinders
UNIVERSITY

Purpose

- Locate shipwrecks at the Murray river
- Mapping a shipwreck called 'Crowie'

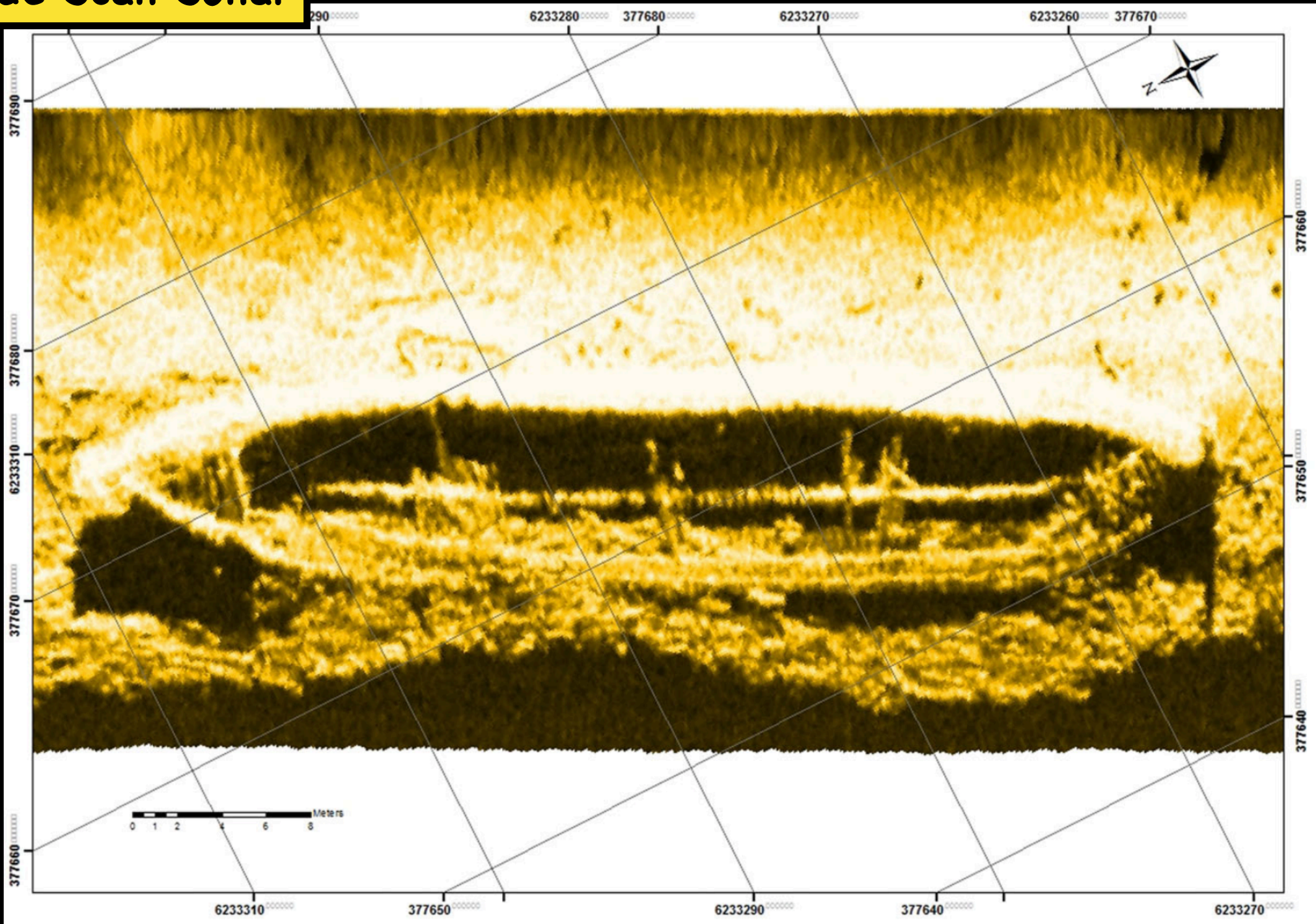
Methodology

- DC Resistivity and EM (??) method
- Dynamic (towed by boat) & fixed cable
 - floating (on water surface)
 - submerged (on river bottom)

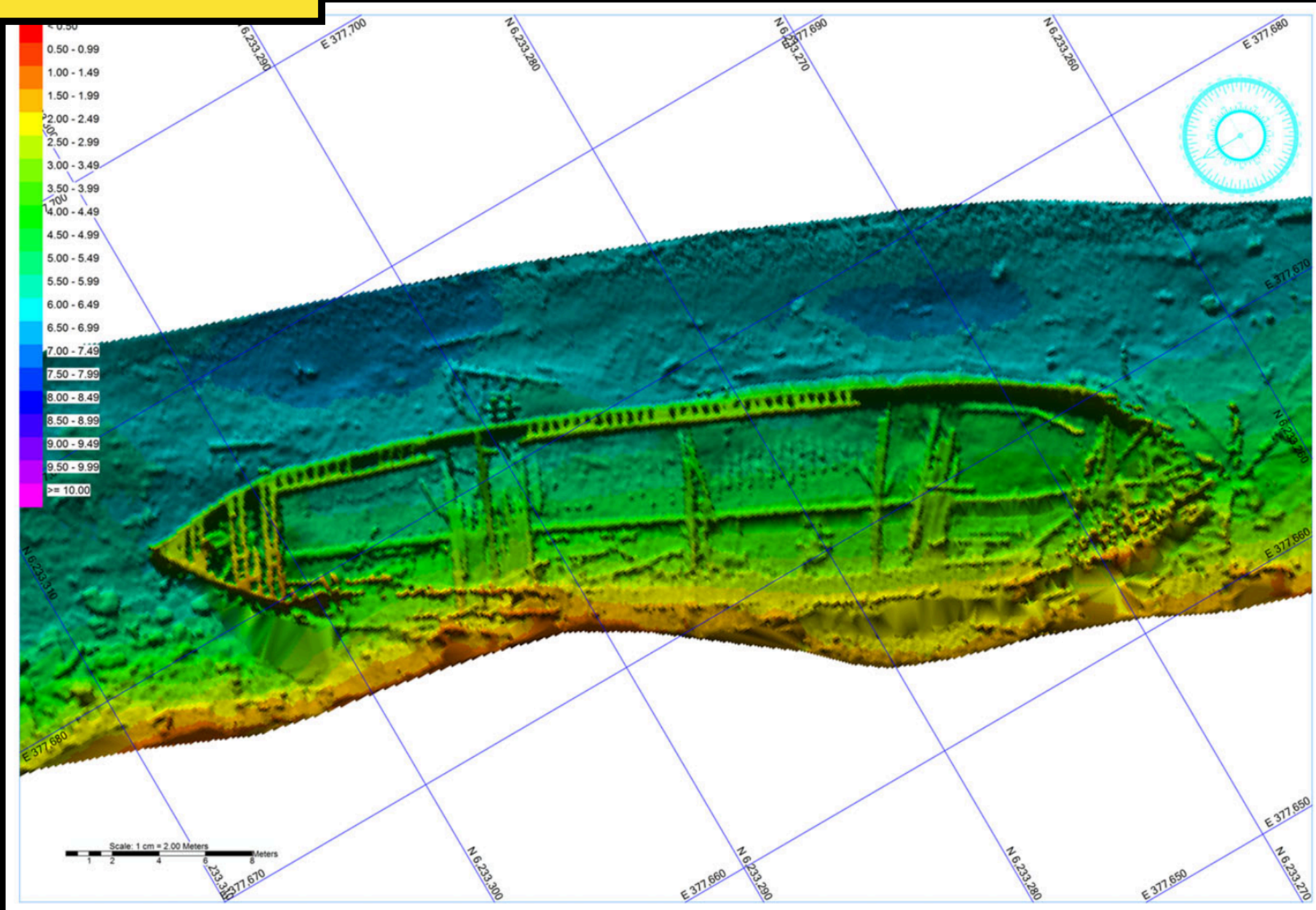
LOCATION



Side Scan Sonar



Multi Beam

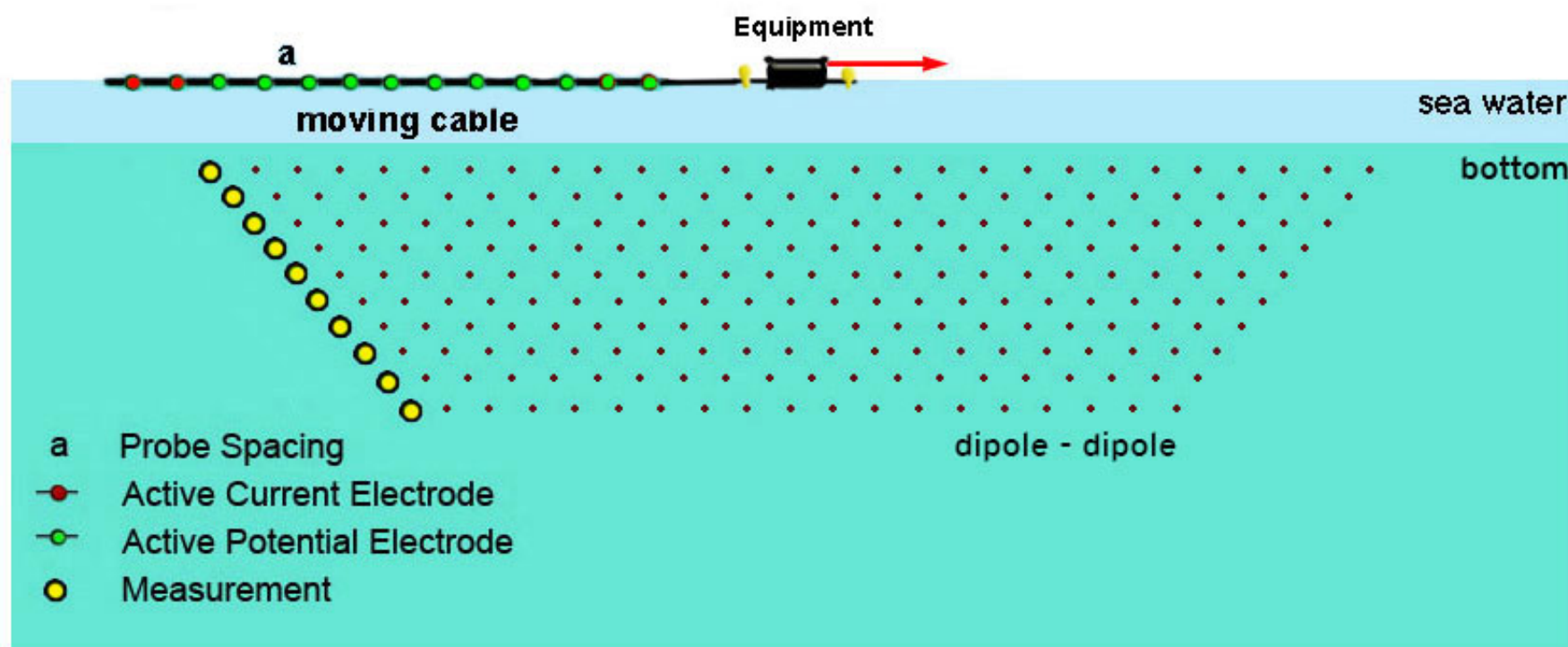


GPR

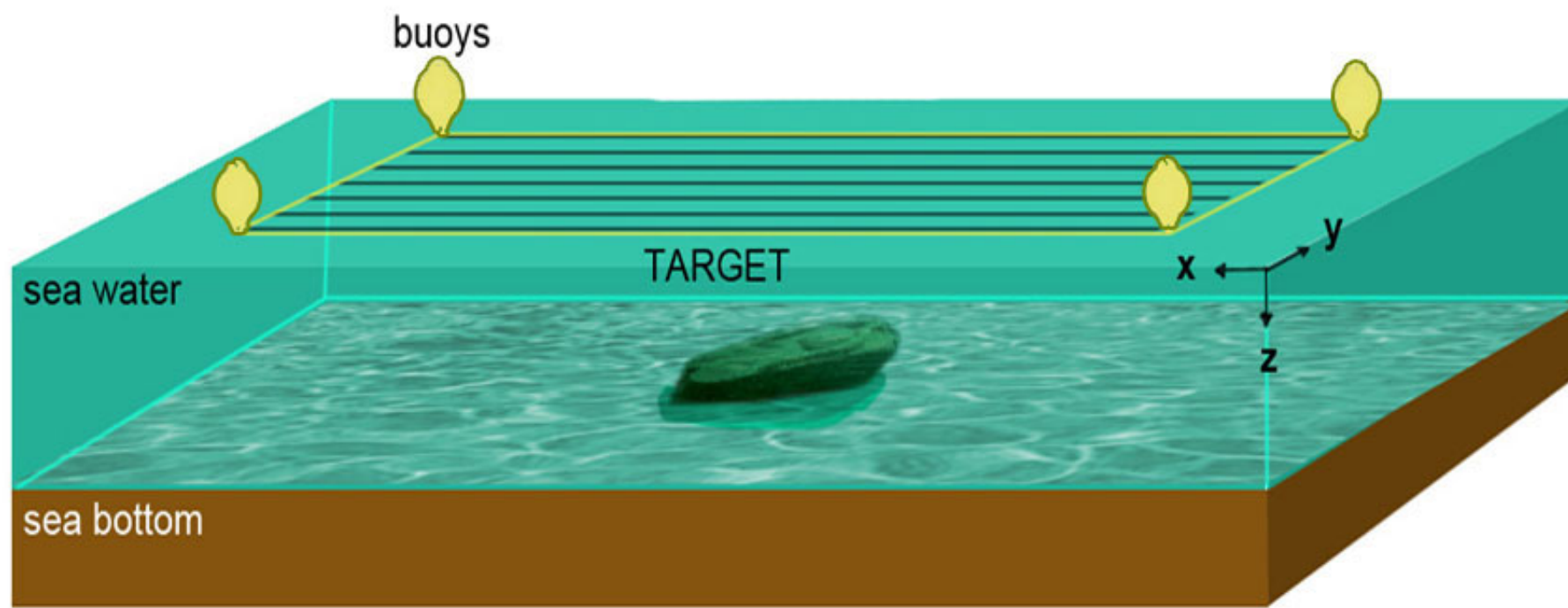
Mag

FLOATING

2D



3D



SUBMERGED

