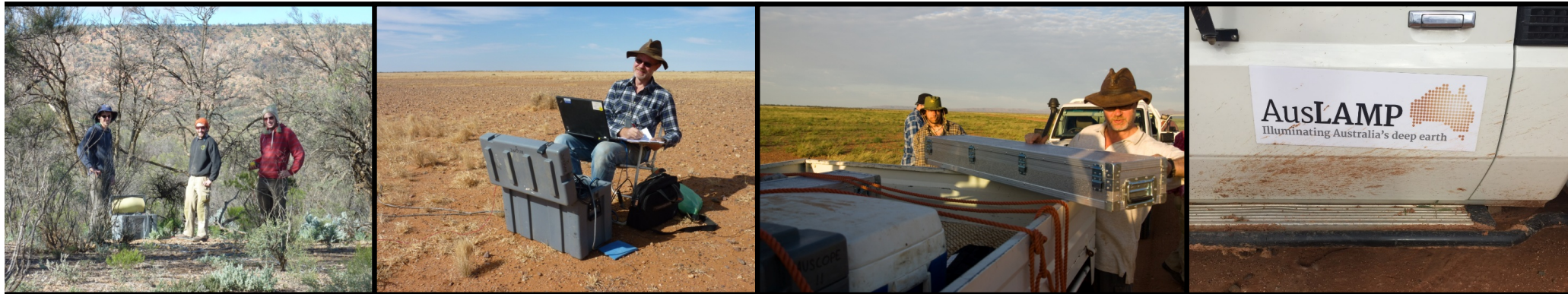


AusLAMP: *Known Knowns, Known Unknowns and Unknown Unknowns*

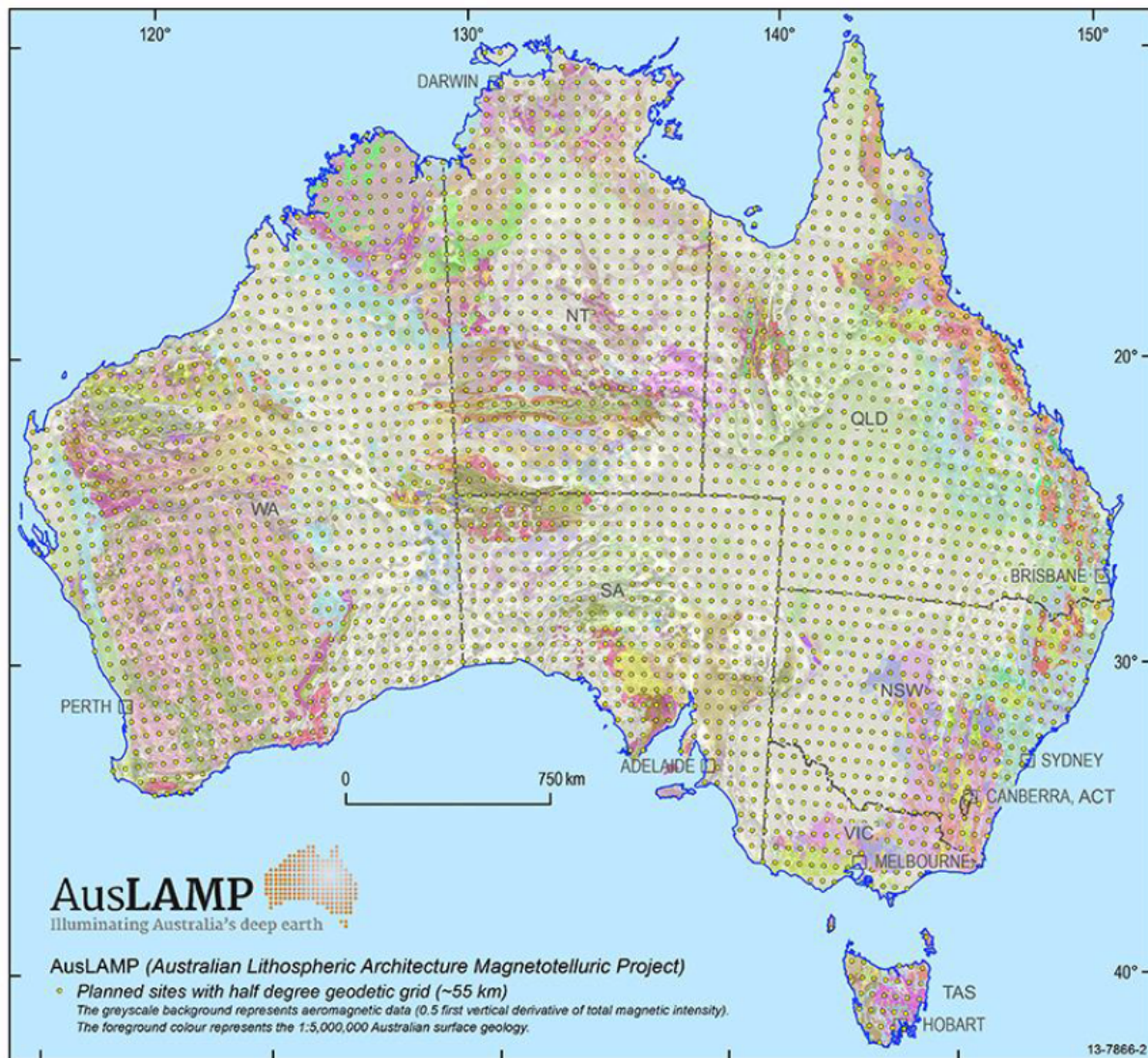
*Graham Heinson and the University of Adelaide
Electrical Earth Imaging group*



TRaX Seminar

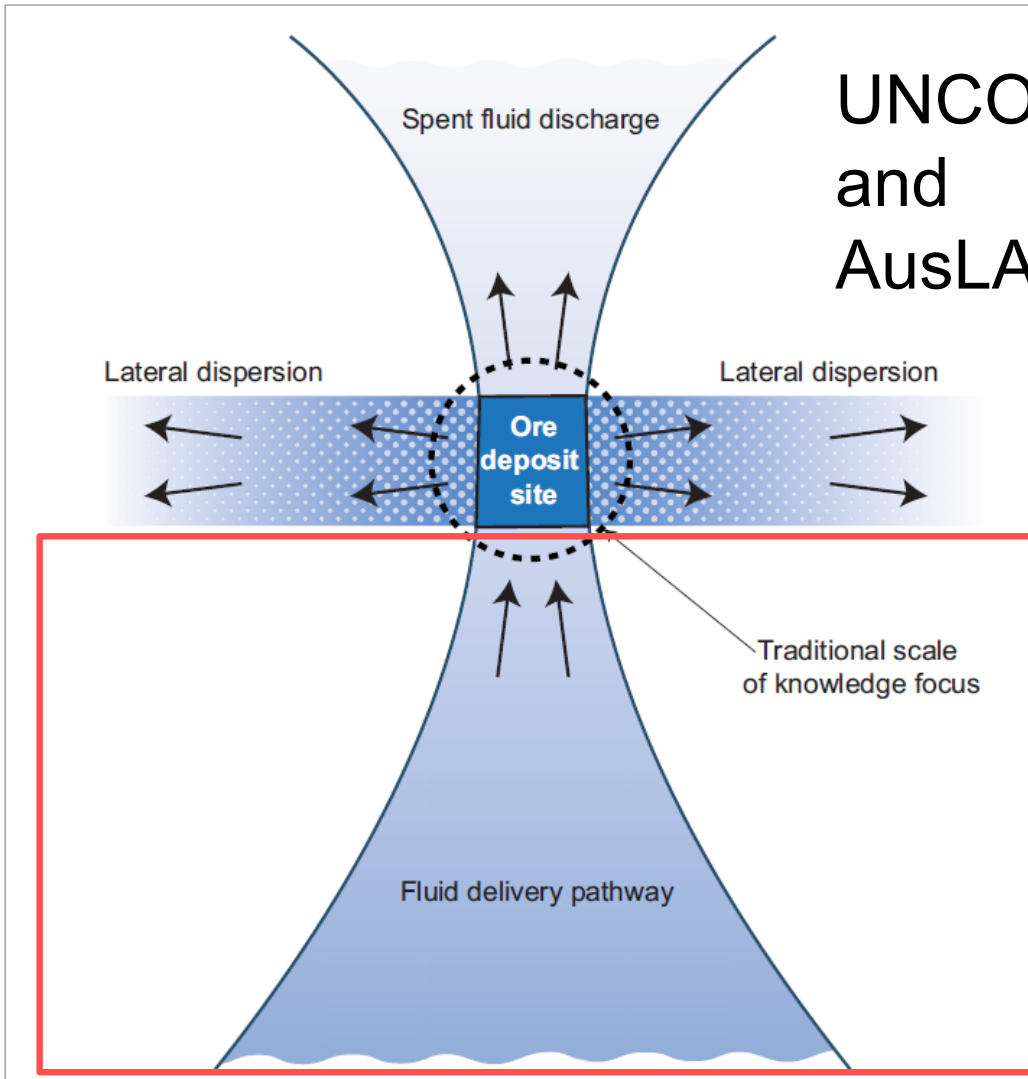
University of Adelaide

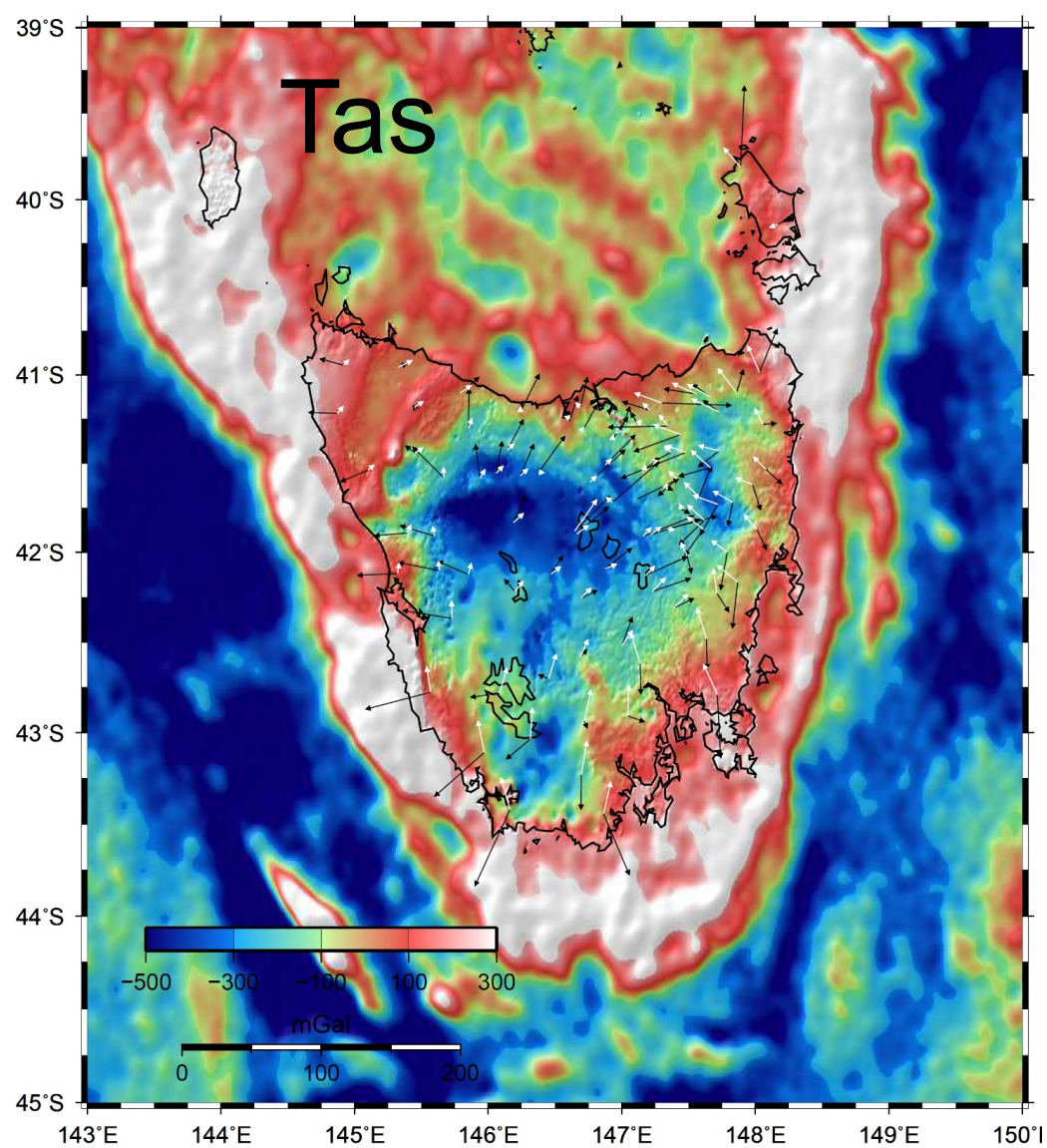
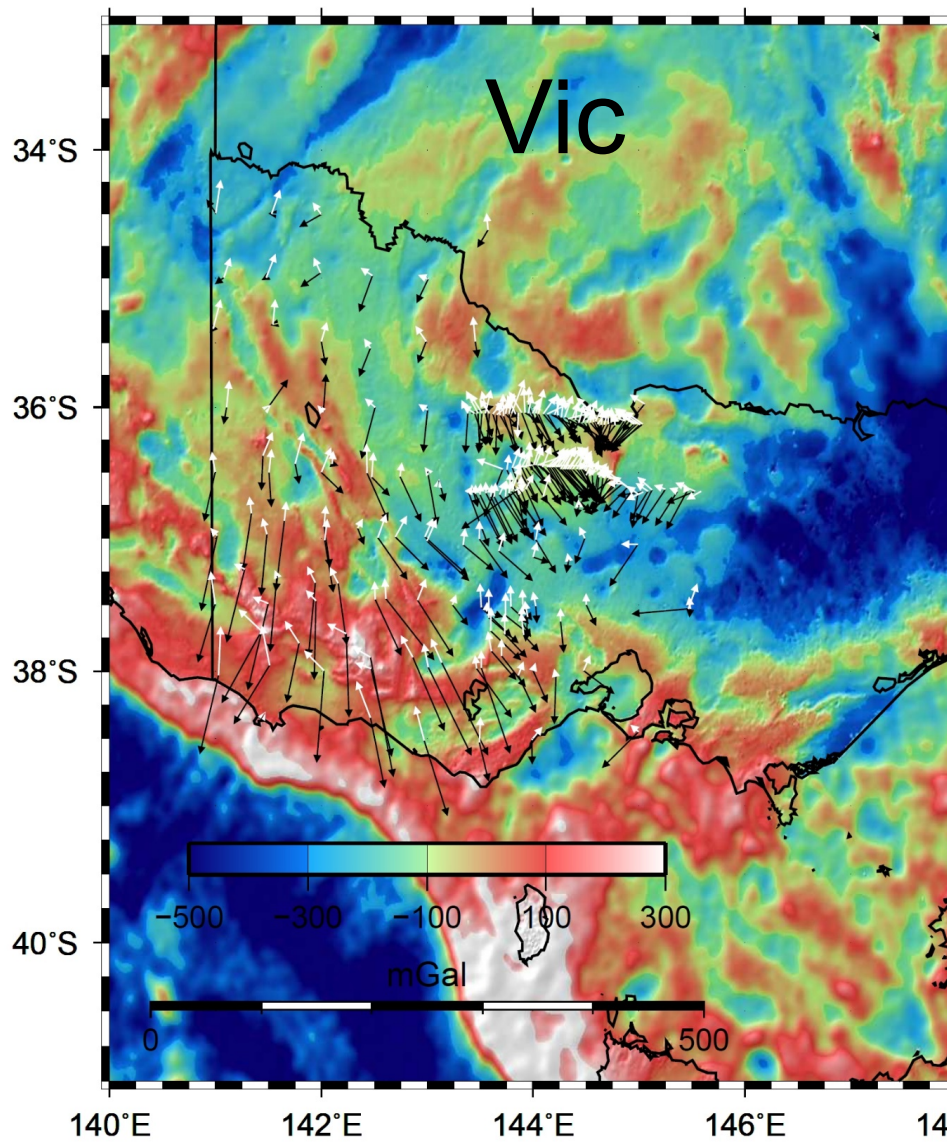
Friday 5th May 2017

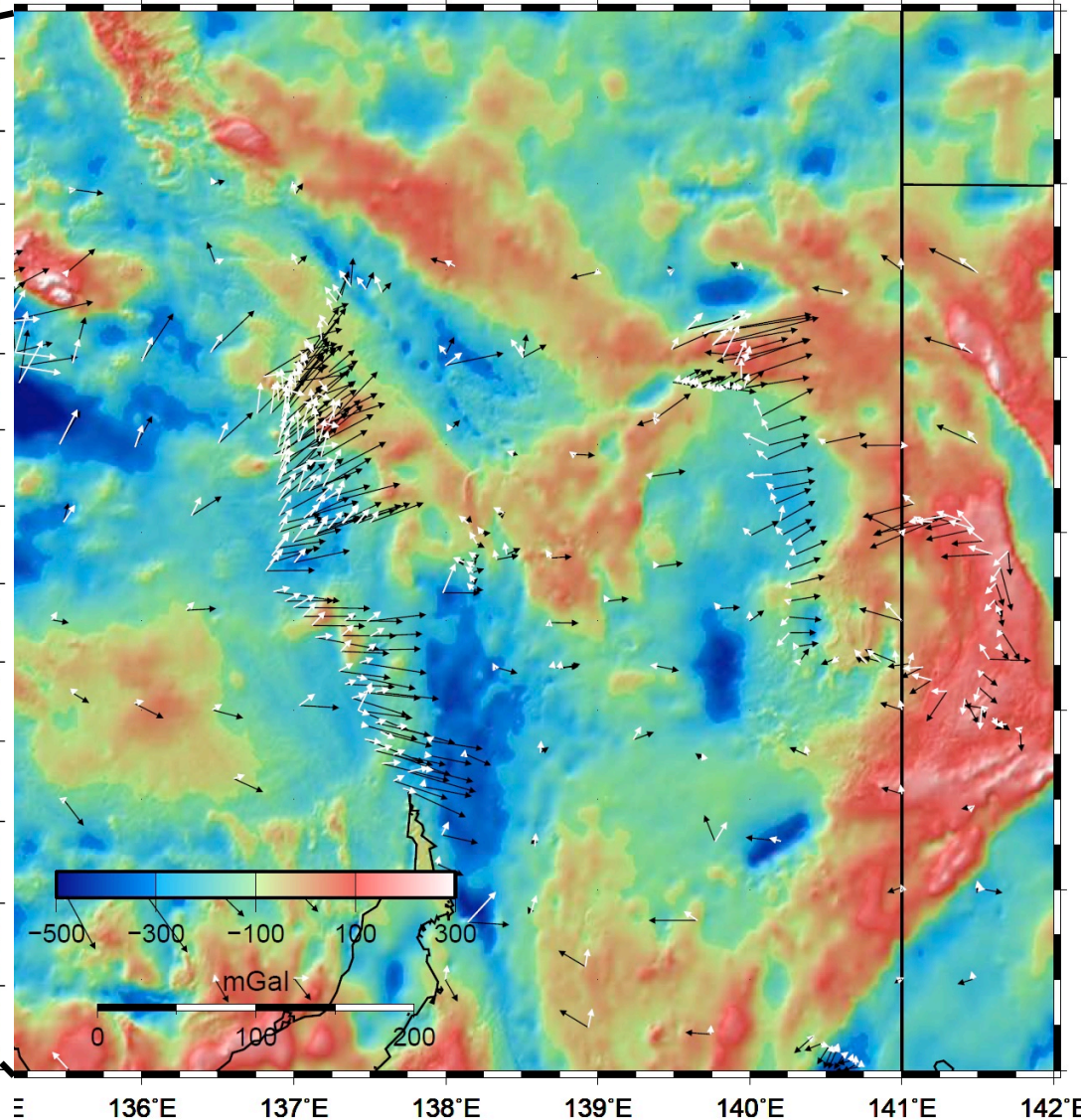
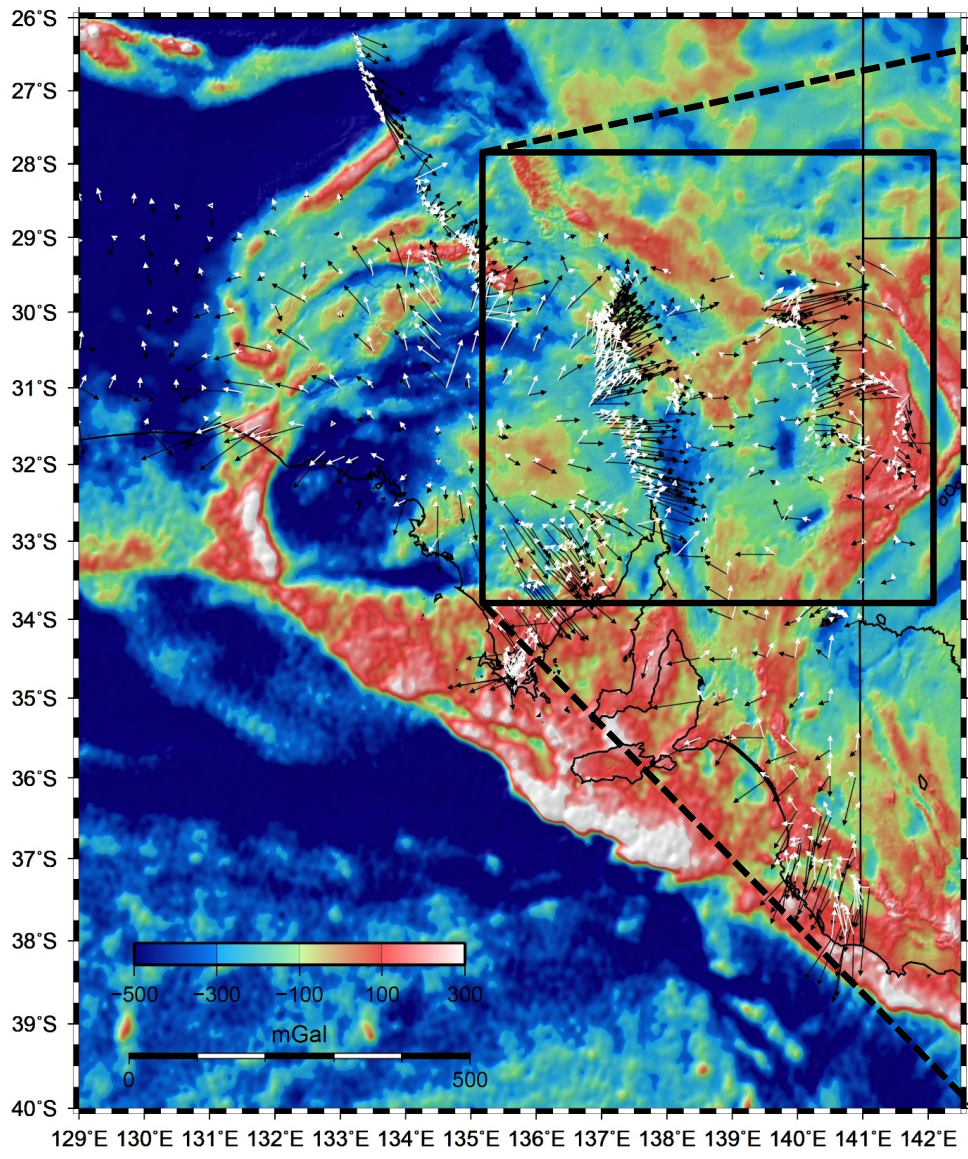


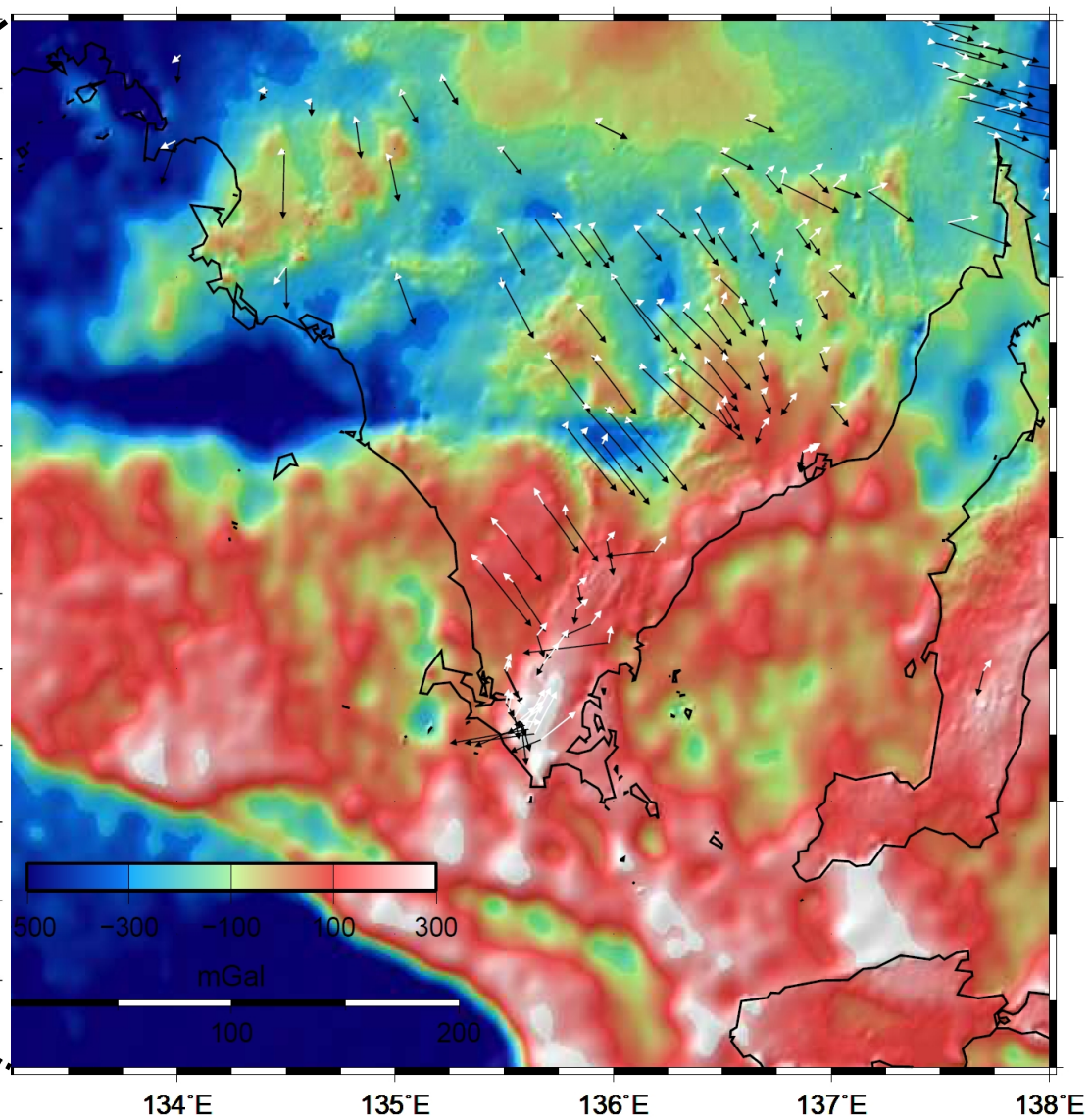
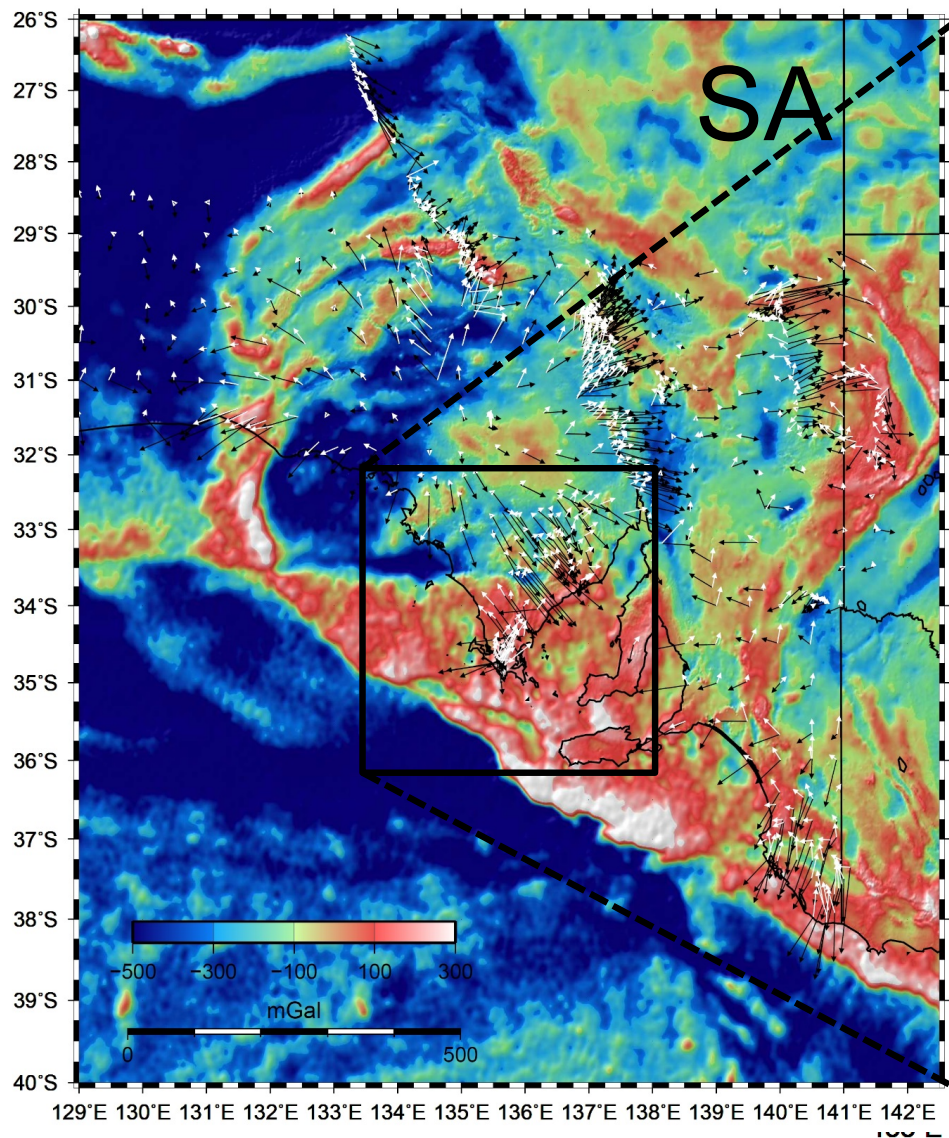
The Australian Lithospheric Architecture Magnetotelluric Project (AusLAMP) is a collaborative MT survey for acquiring long-period MT data at ~2800 sites across Australia from 2014 to map the electrical resistivity of the continent in 3D. The national MT survey will provide significant information about Australia's geodynamic framework as well as valuable data for resource exploration.

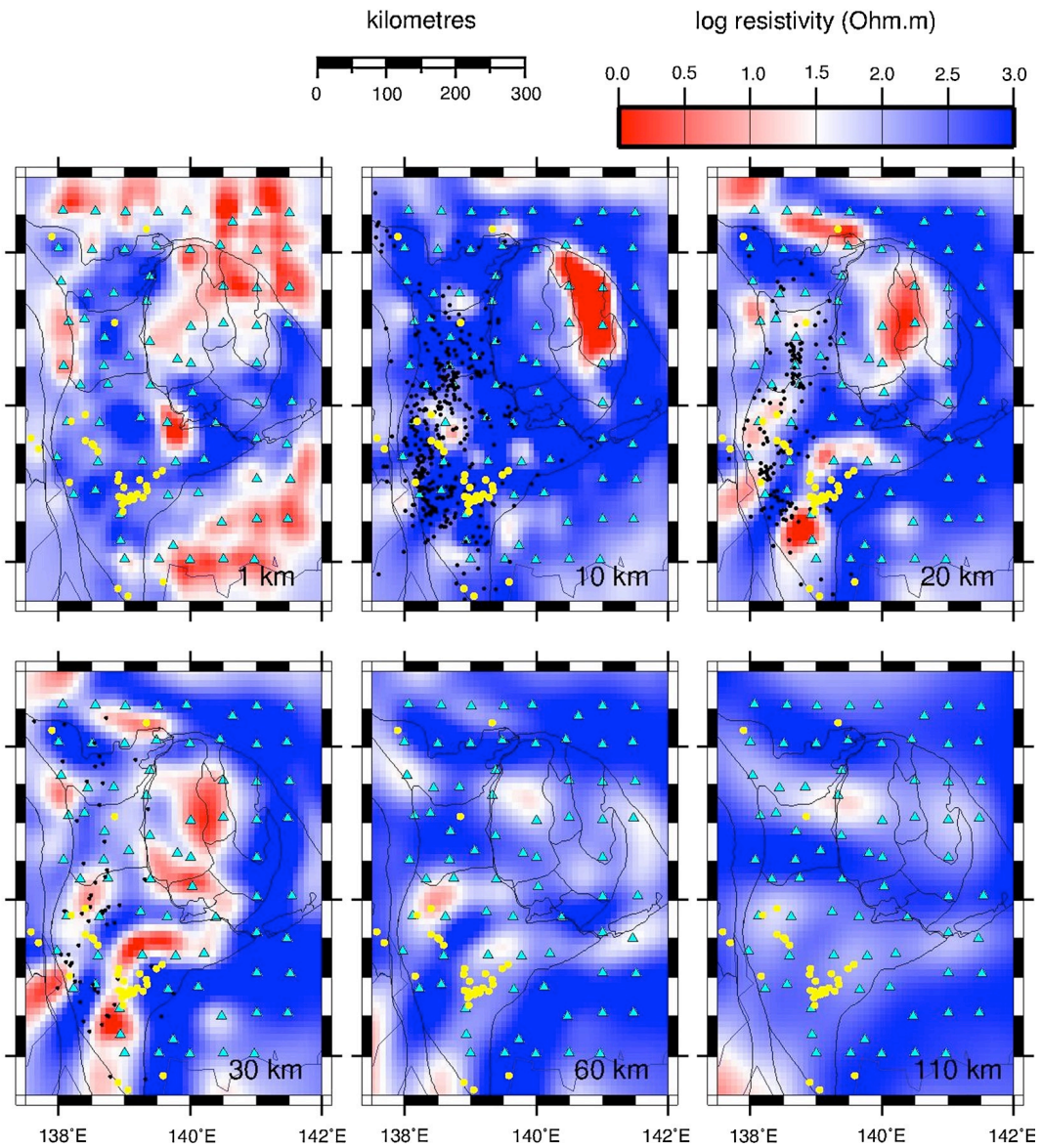
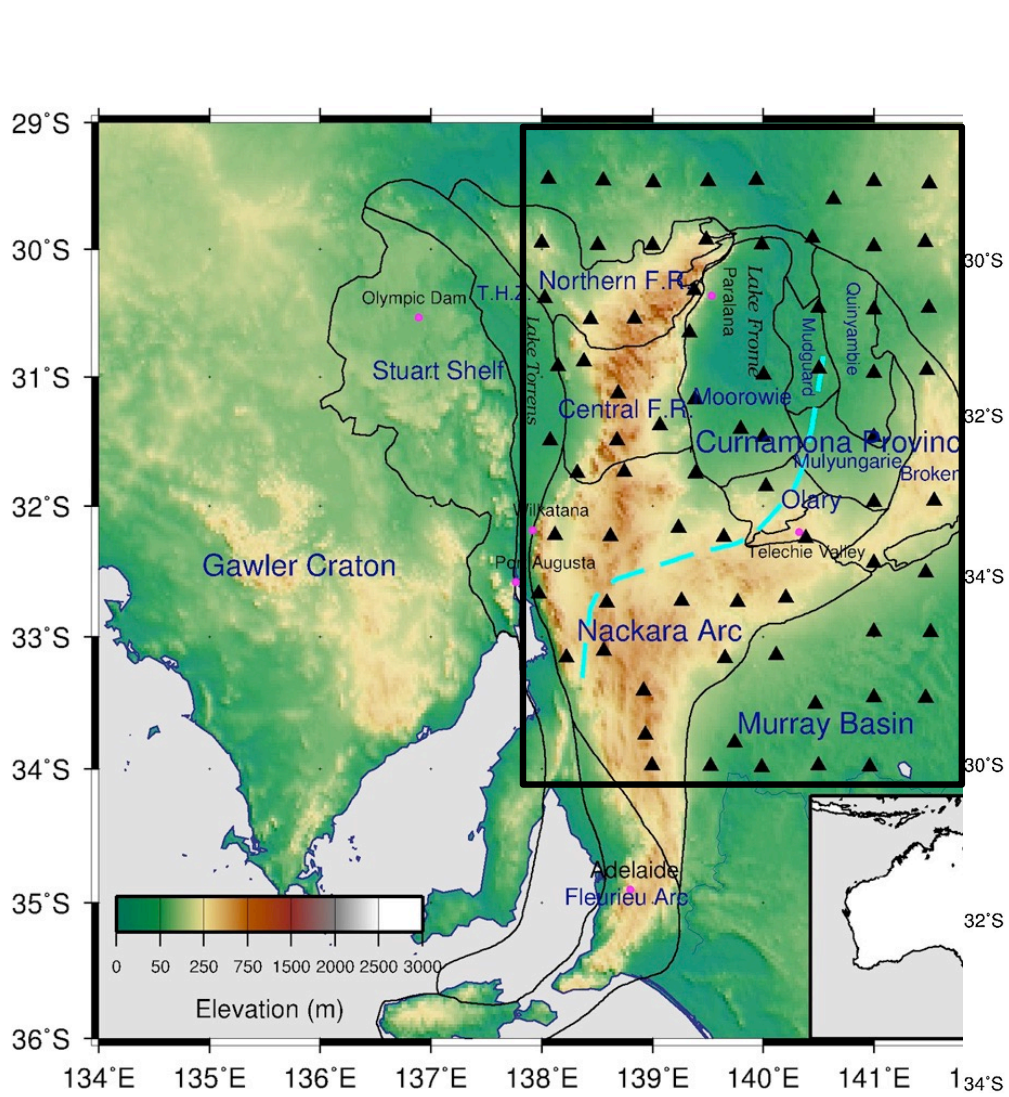
UNCOVER and AusLAMP

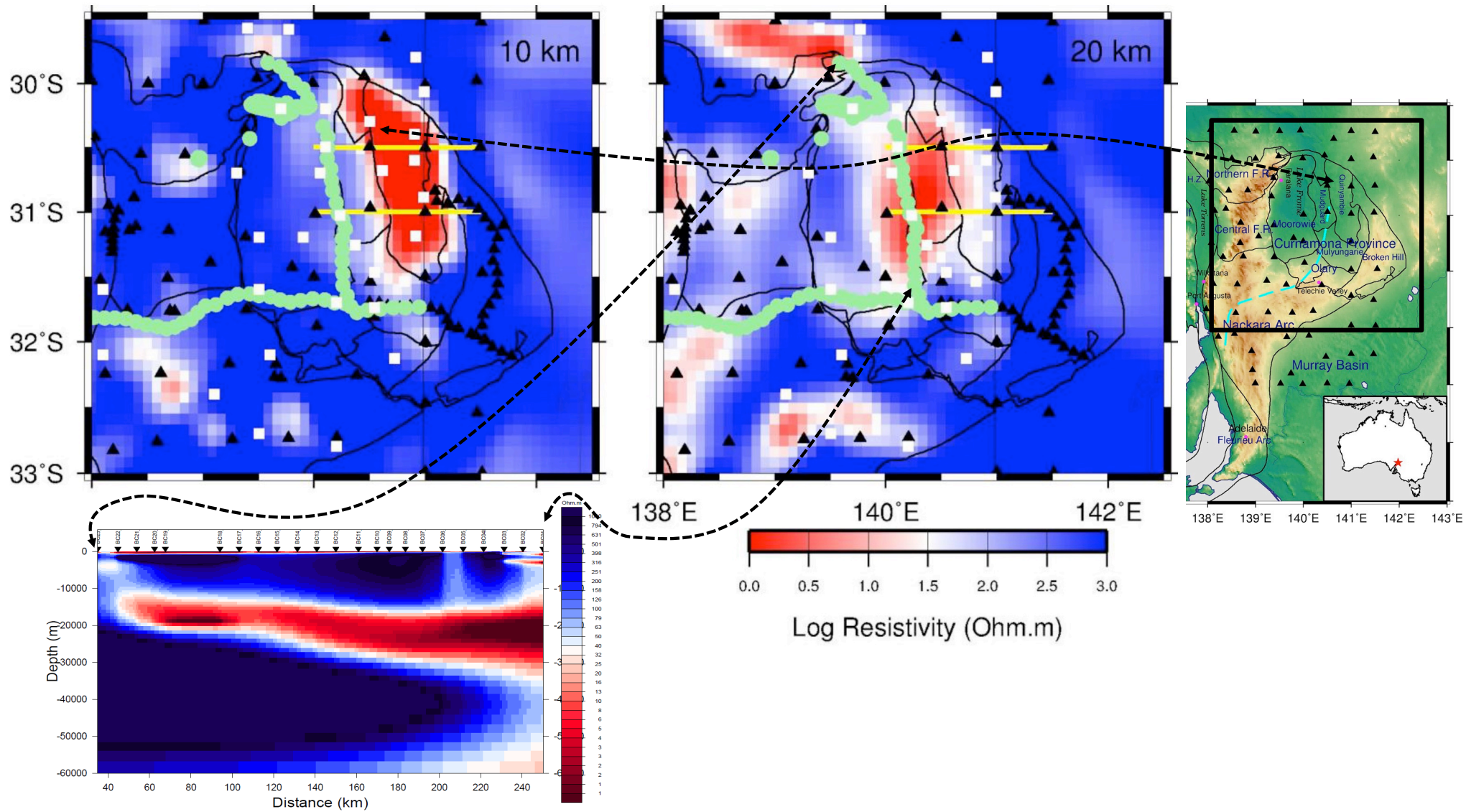




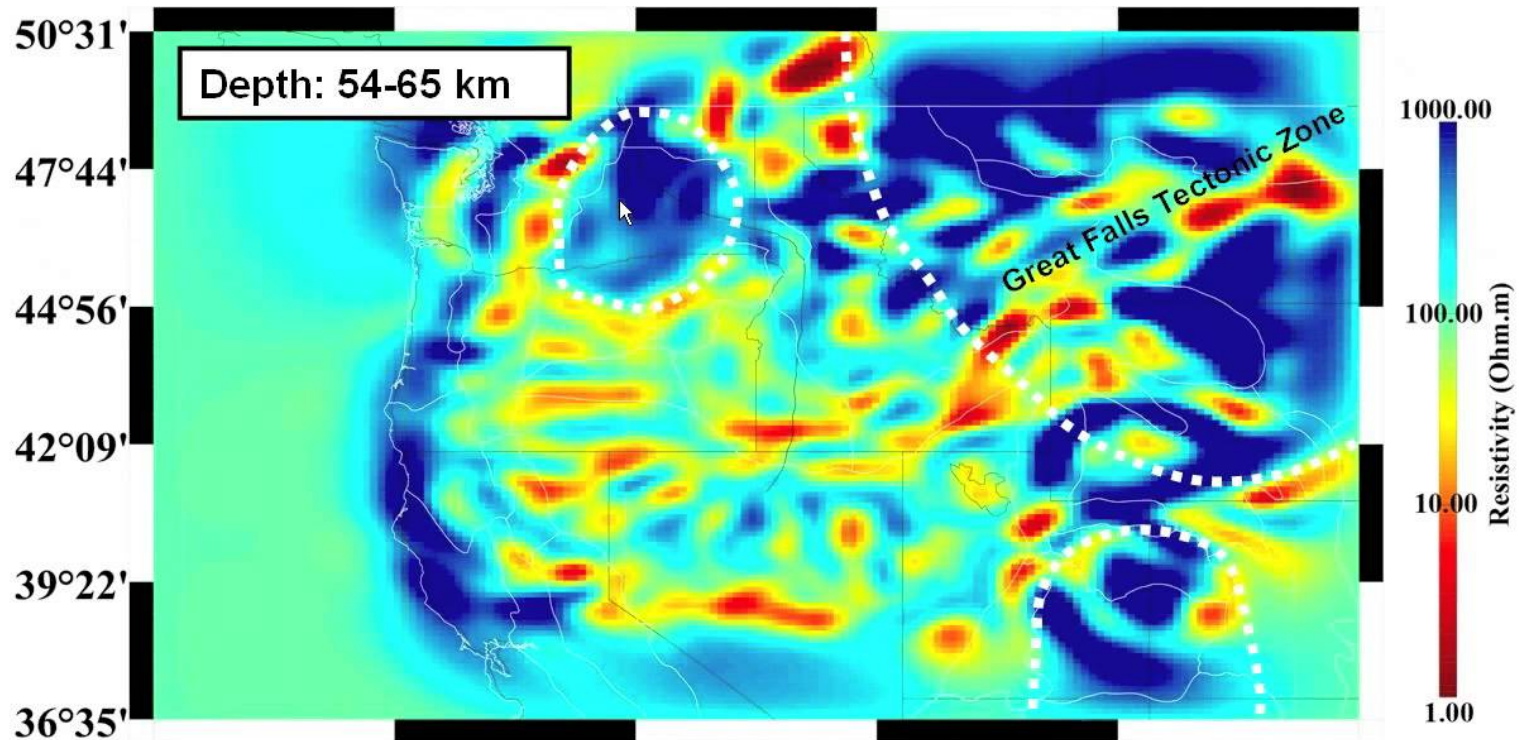








Geophysical vs geological models



- Resistive lithosphere beneath cratons (Medicine Hat and Wyoming), Columbia Plateau, Colorado Plateau