

GPR IN SANTA ANA DEL NORTE TEMPLE, NUEVA ESPARTA STATE, VENEZUELA

Juanpablo Romero



Playa El Agua

Juangriego

Santa Ana

La Asunción

Embalse San Juan

Nueva Esparta

Boca del Río

Porlamar

Punta de Piedras

La Isleta

11.6 km

© 2017 Google
Image © 2017 DigitalGlobe
Data SIO, NOAA, U.S. Navy, NGA, GEBCO

Google

Background information

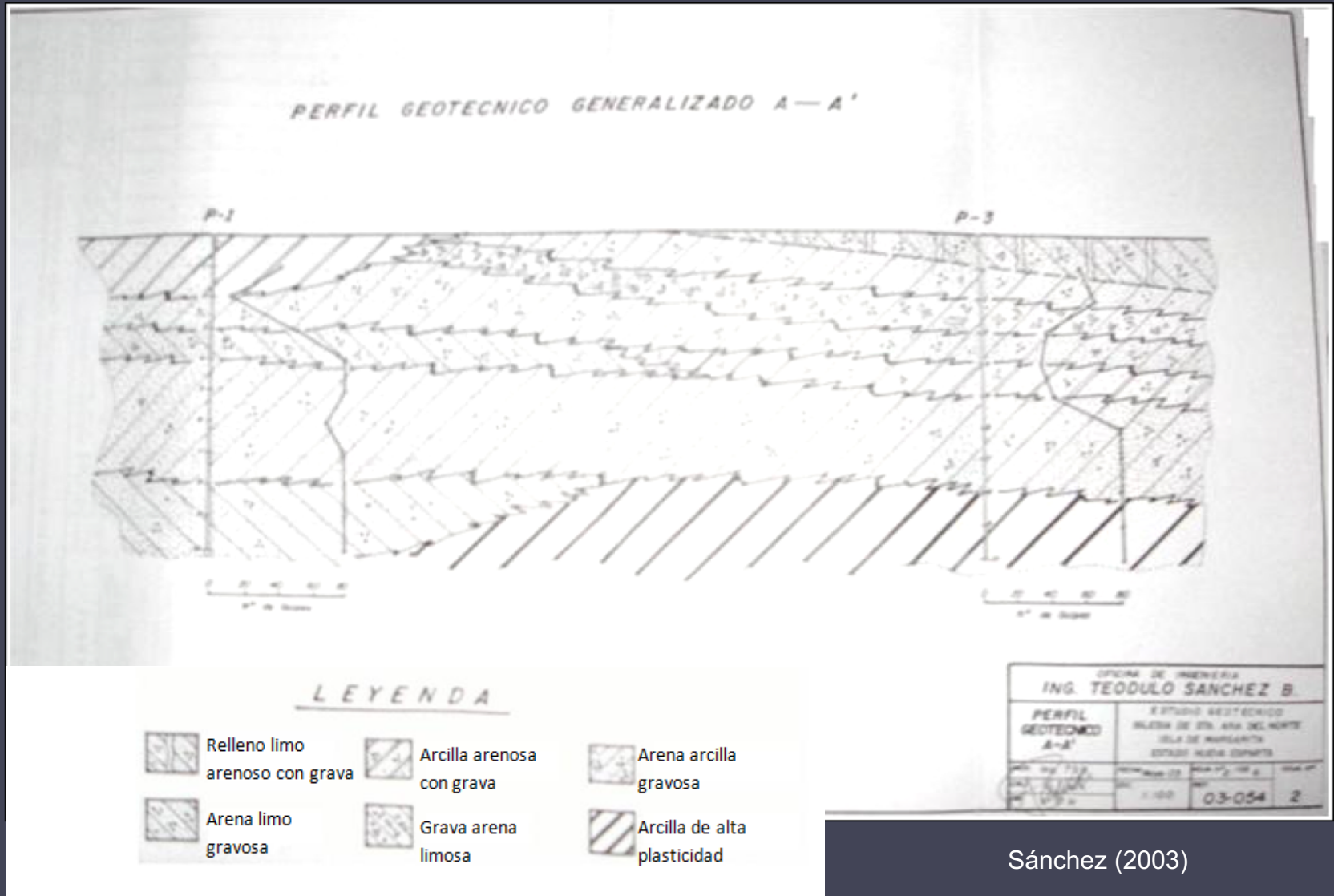
- The village of Santa Ana was found in 1530
- Beginning of the temple's construction in 1749 and completed in 1752
- Declared Cultural Heritage on march 8th, 1957



Background information

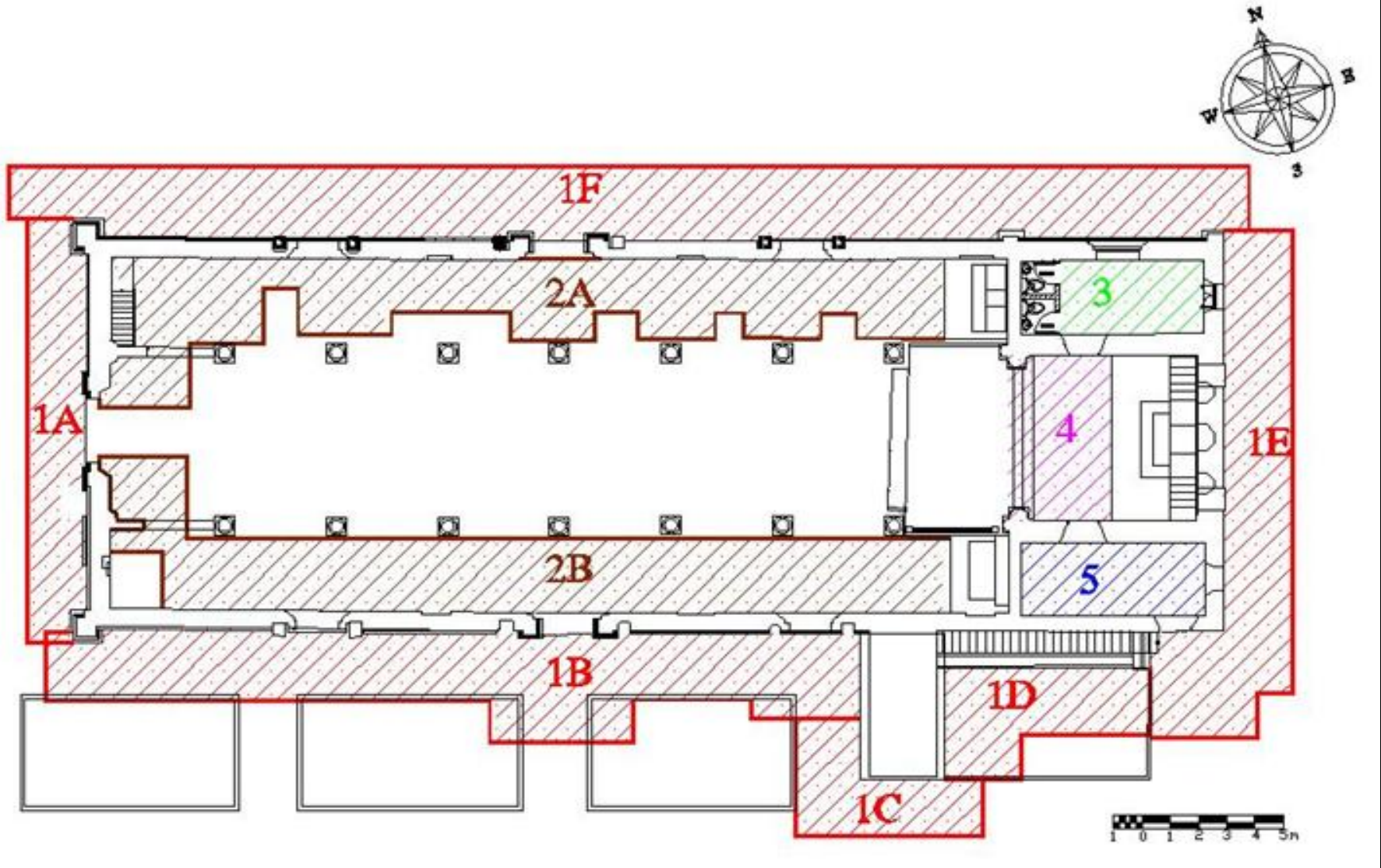


Geological information

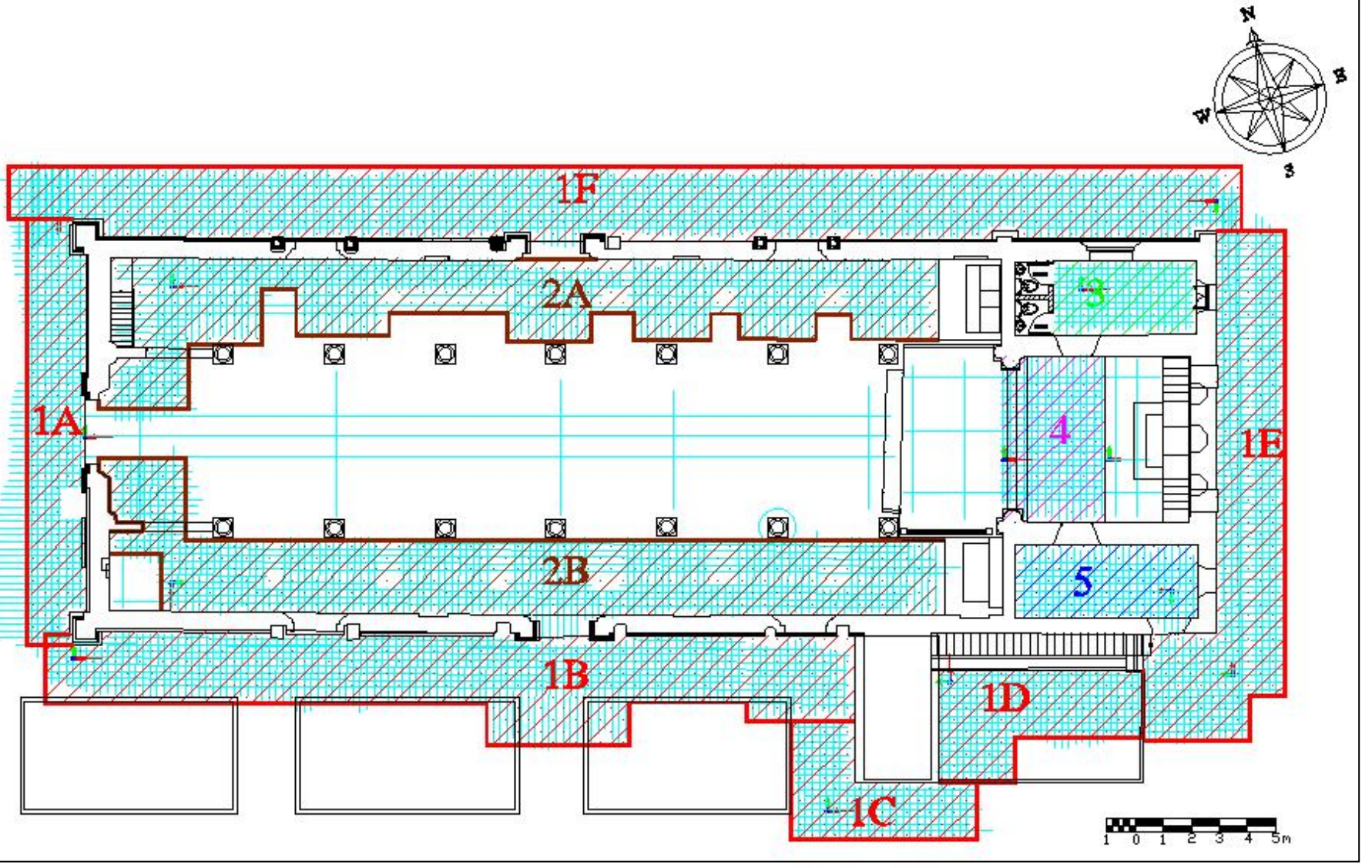


Sánchez (2003)

Survey Design



Survey Design

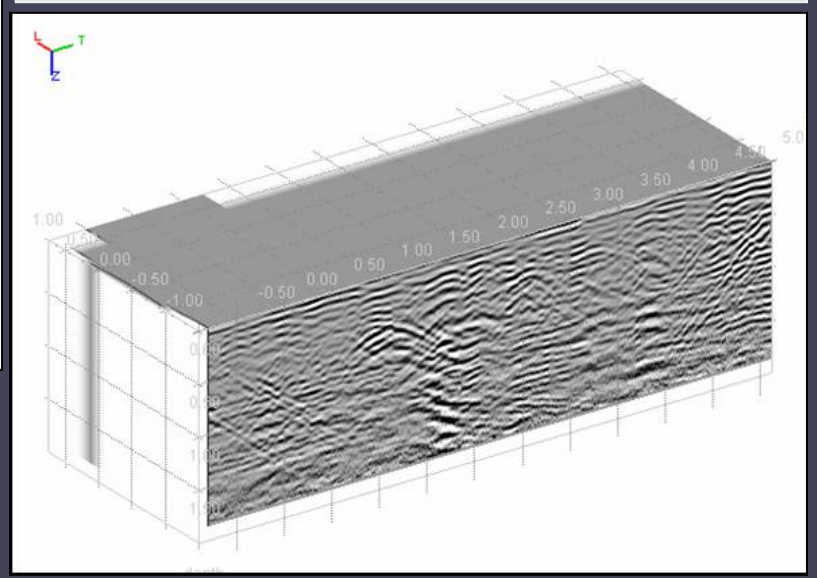
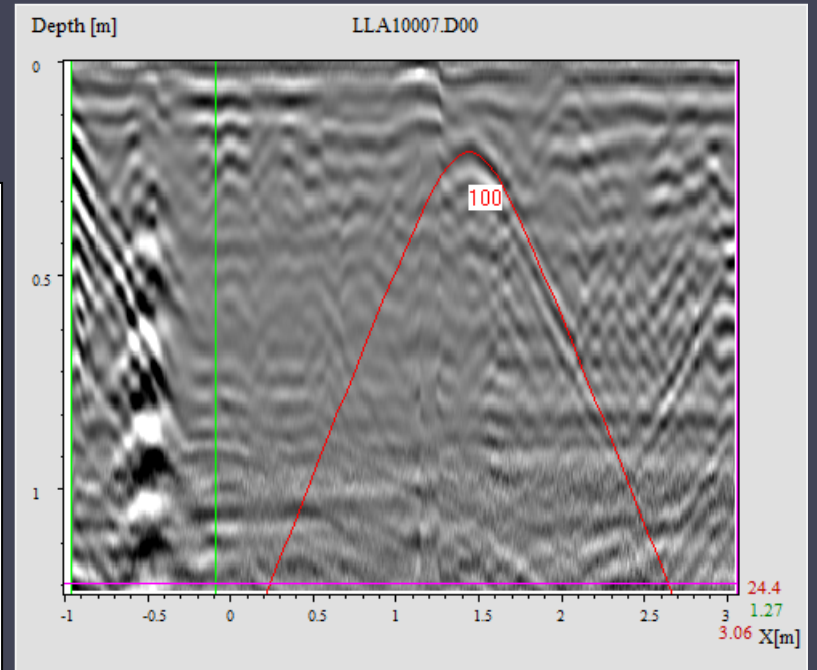
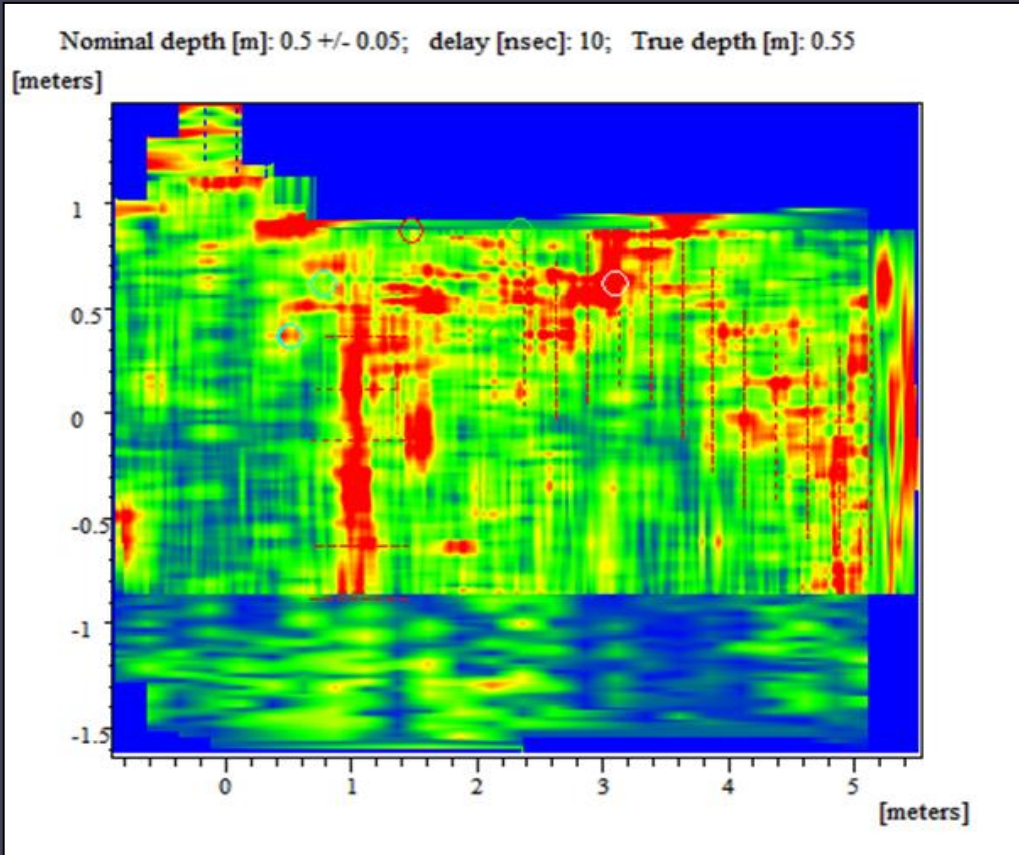


Acquisition

- 11 meshes of longitudinal and transversal lines
- Multichannel arrangement (25cm space between lines)
 - 1600 Mhz
 - 600 Mhz
- Monostatic arrangement 200 Mhz (50cm space between lines)



Results



Interpretation

