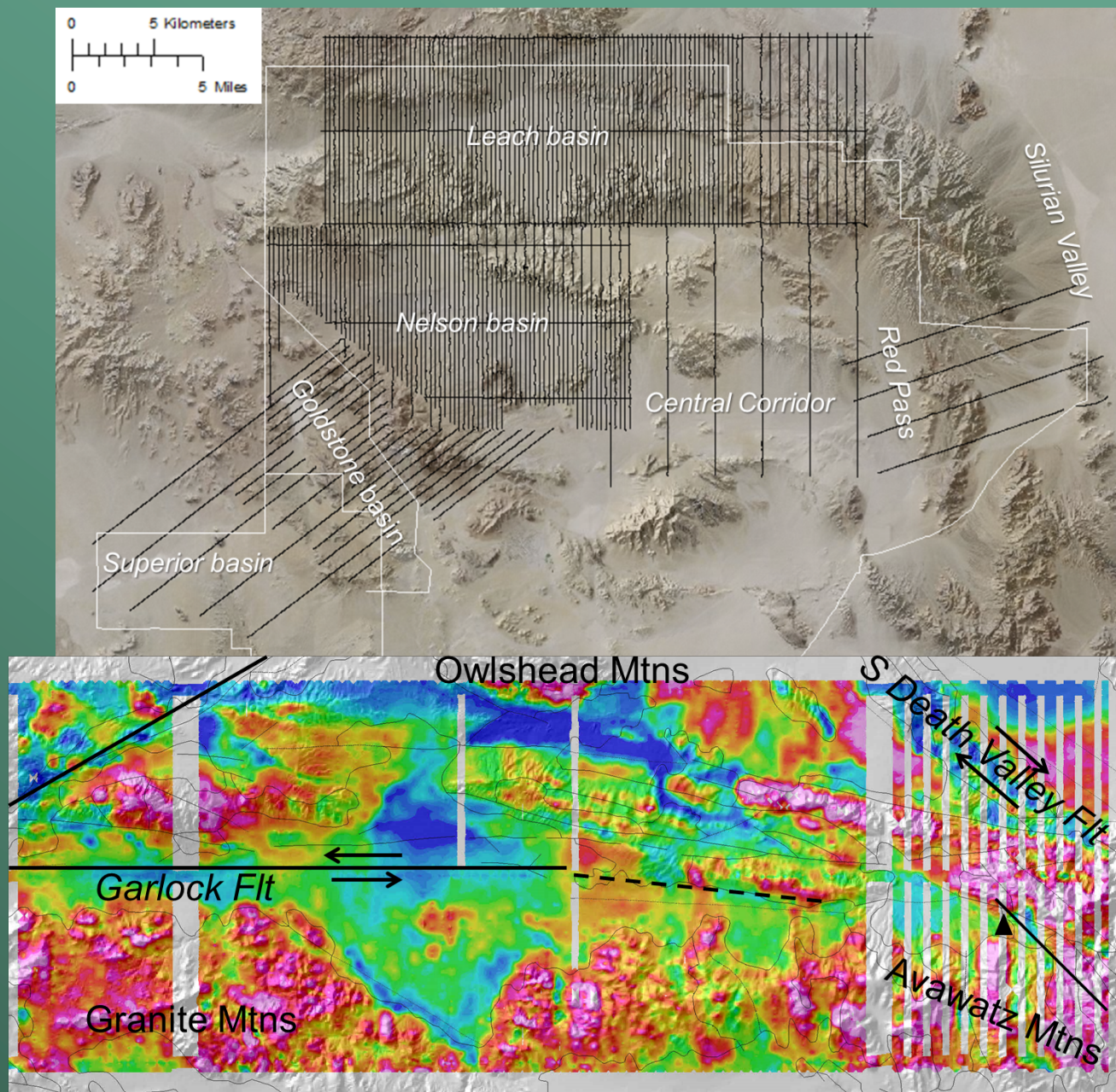


Airborne Electromagnetics in Complex 3-D Environments

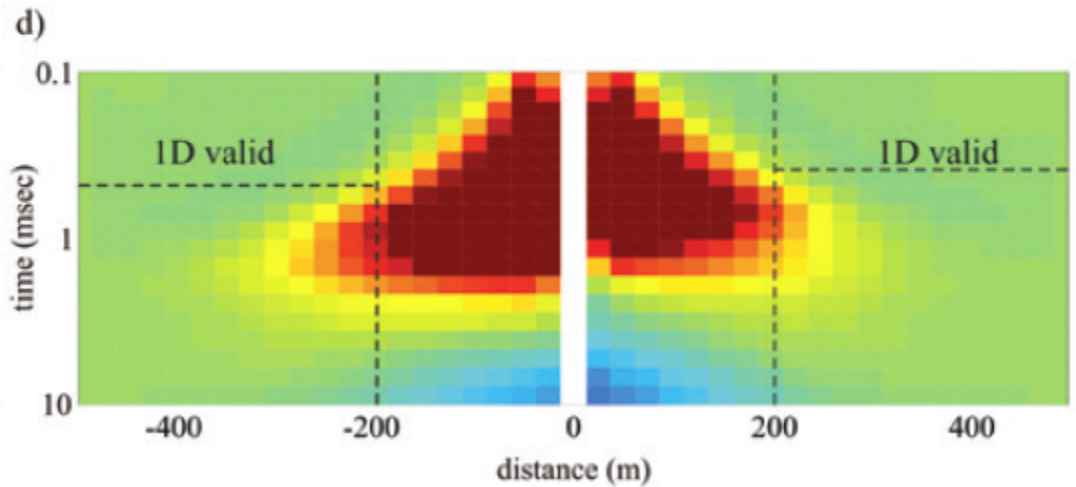
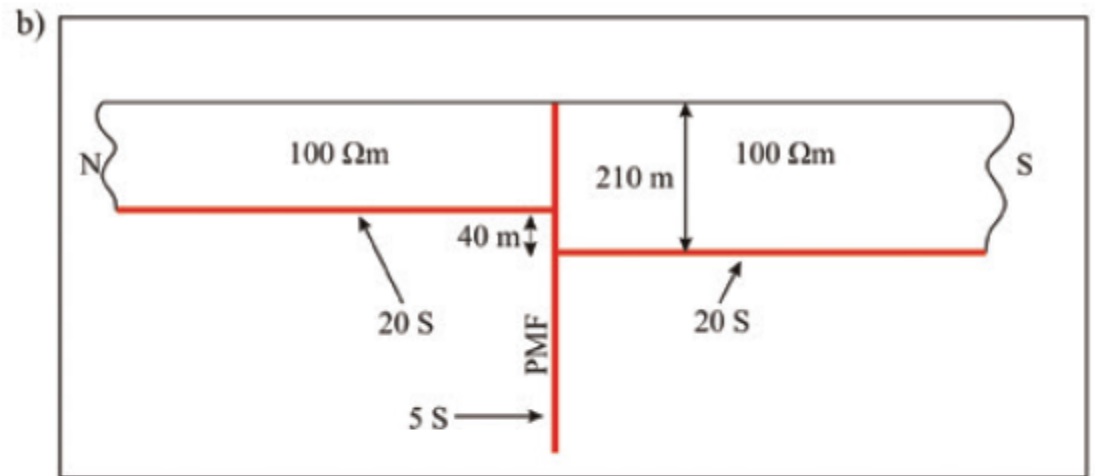
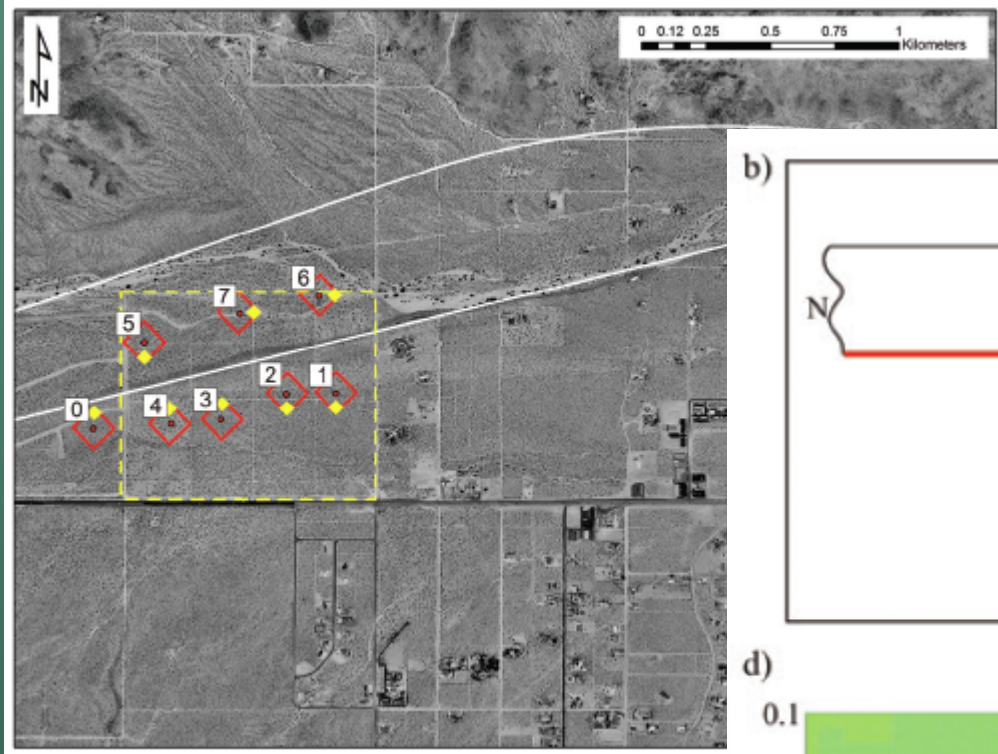
Paul A. Bedrosian

The Problem

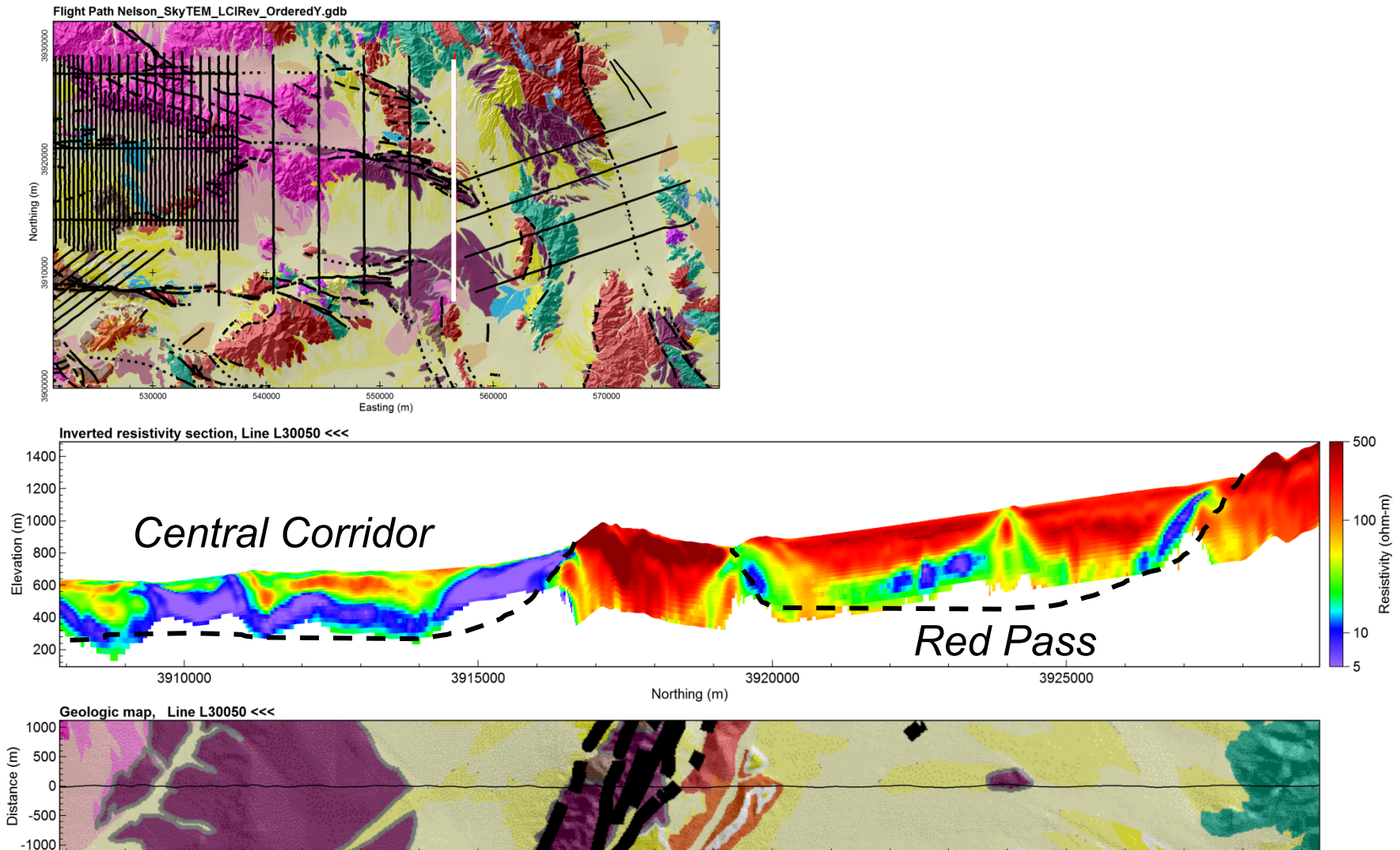
- Pushing into complex geologic and hydrologic settings
- Abrupt lateral contrasts, challenging topography, poor elevation control, low S/N ratio
- Asking more quantitative questions



Ground Example



How much can we trust our geometry?



Fault geometry—are we pushing 1D too much?

