



UNIVERSIDAD NACIONAL AUTÓNOMA DE MÉXICO POSGRADO EN CIENCIAS DE LA TIERRA

*“INTEGRAL CHARACTERIZATION OF A GEOTHERMAL SYSTEM CON PASSIVE
SEISMIC AND ELECTROMAGNETIC METHODS”*

IVÁN GRANADOS CHAVARRÍA

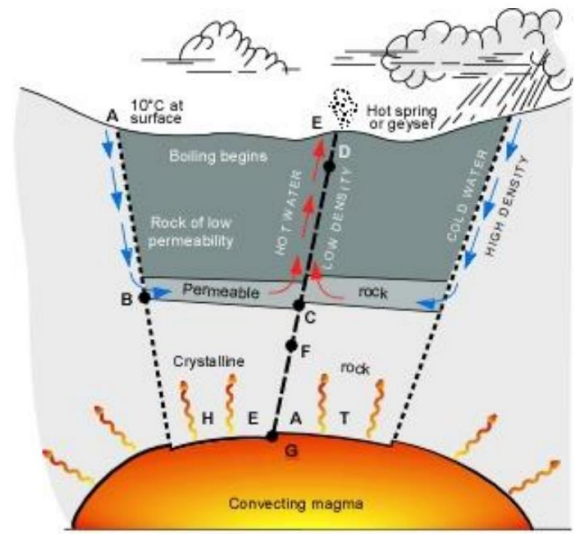
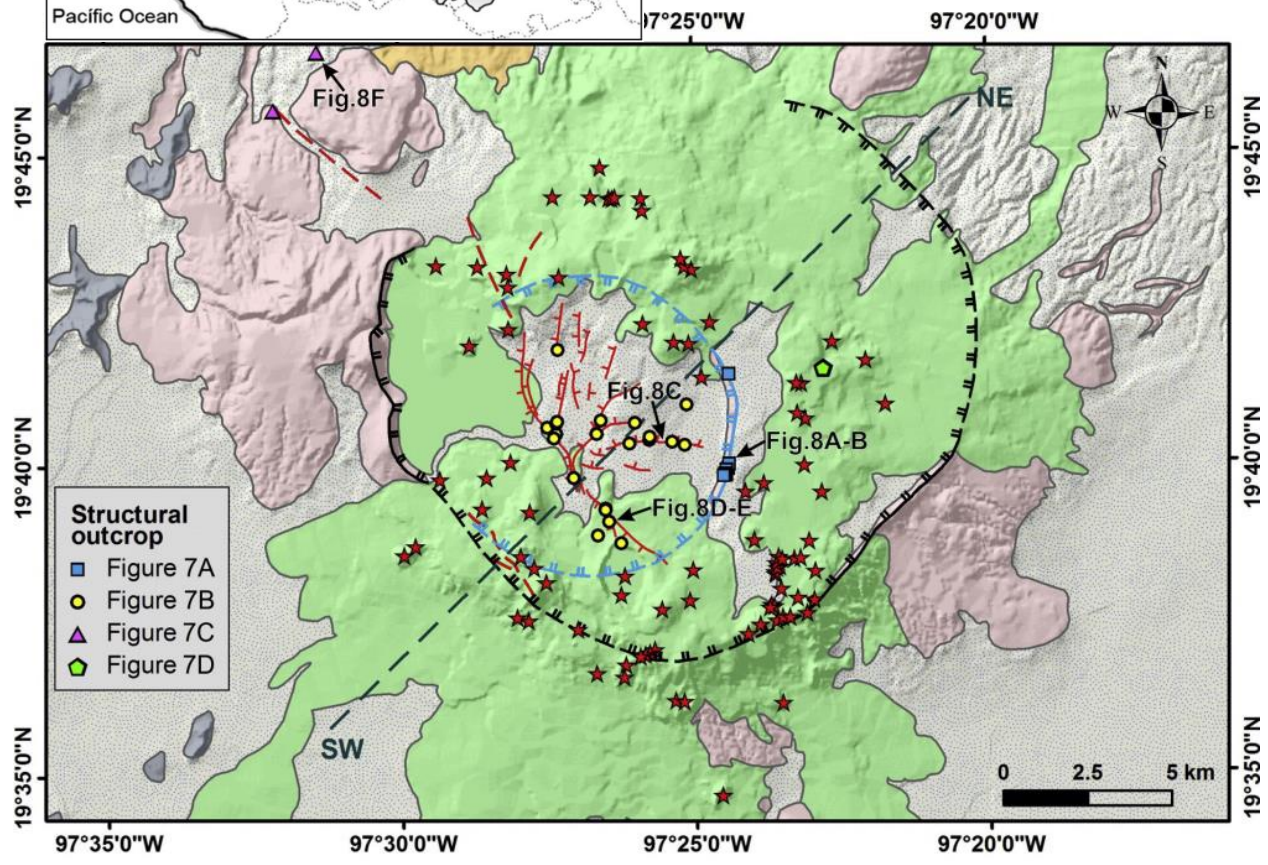
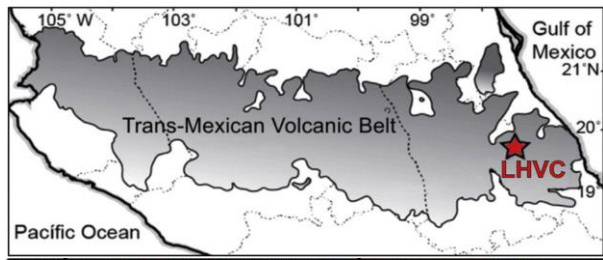


1	2	3	4	5	6	7
---	---	---	---	---	---	---

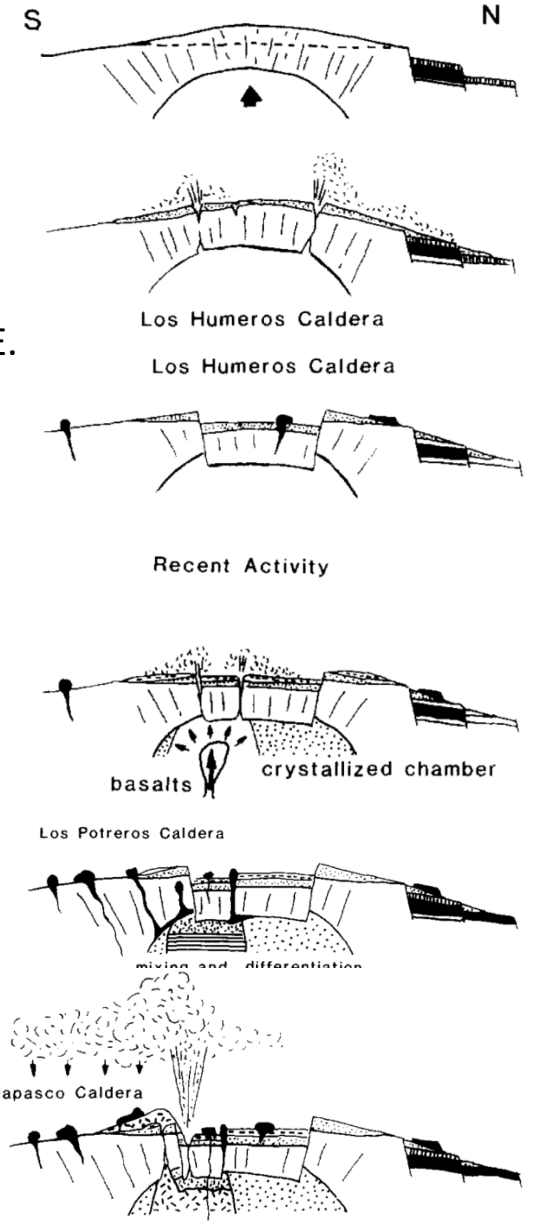
SETUP

VOLCANIC COMPLEX “LOS HUMEROS” (VCLH)

- Evento de compresión NE-SW: fallas inversas y lineamientos NW-SE.
- Evento de tensión y trans-tensión: fallas normales N-S, buzamiento al NE.



Norini et al., 2015



Campos-Enriquez y Garduño-Monroy, 1987



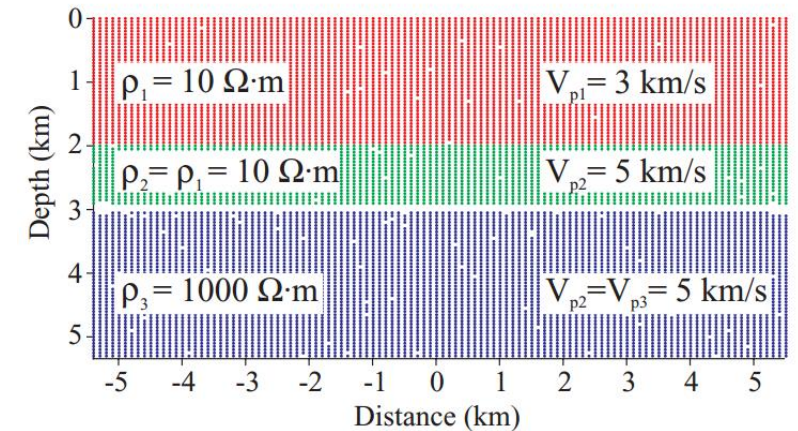
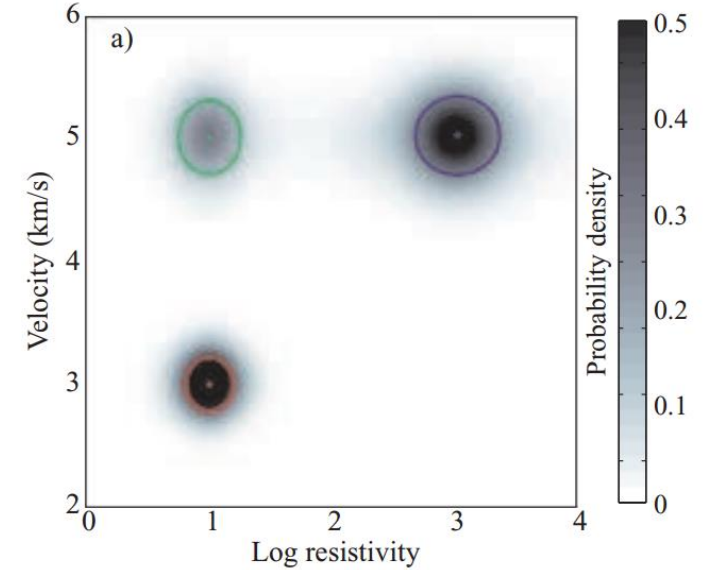
- 1
- 2
- 3
- 4
- 5
- 6
- 7

PROPERTIES

Physical property \ Target	Density	Magnetic susceptibility	Electrical resistivity	Dielectric permittivity	Seismic velocity
Porosity			★		
Permeability					
Water content			★		★
Water quality					
Clay content					
Magnetic mineral content					
Metallic mineral content					
Mechanical properties					
Subsurface structure			★		★

Strong	Moderate	Weak	None
---------------	-----------------	-------------	-------------

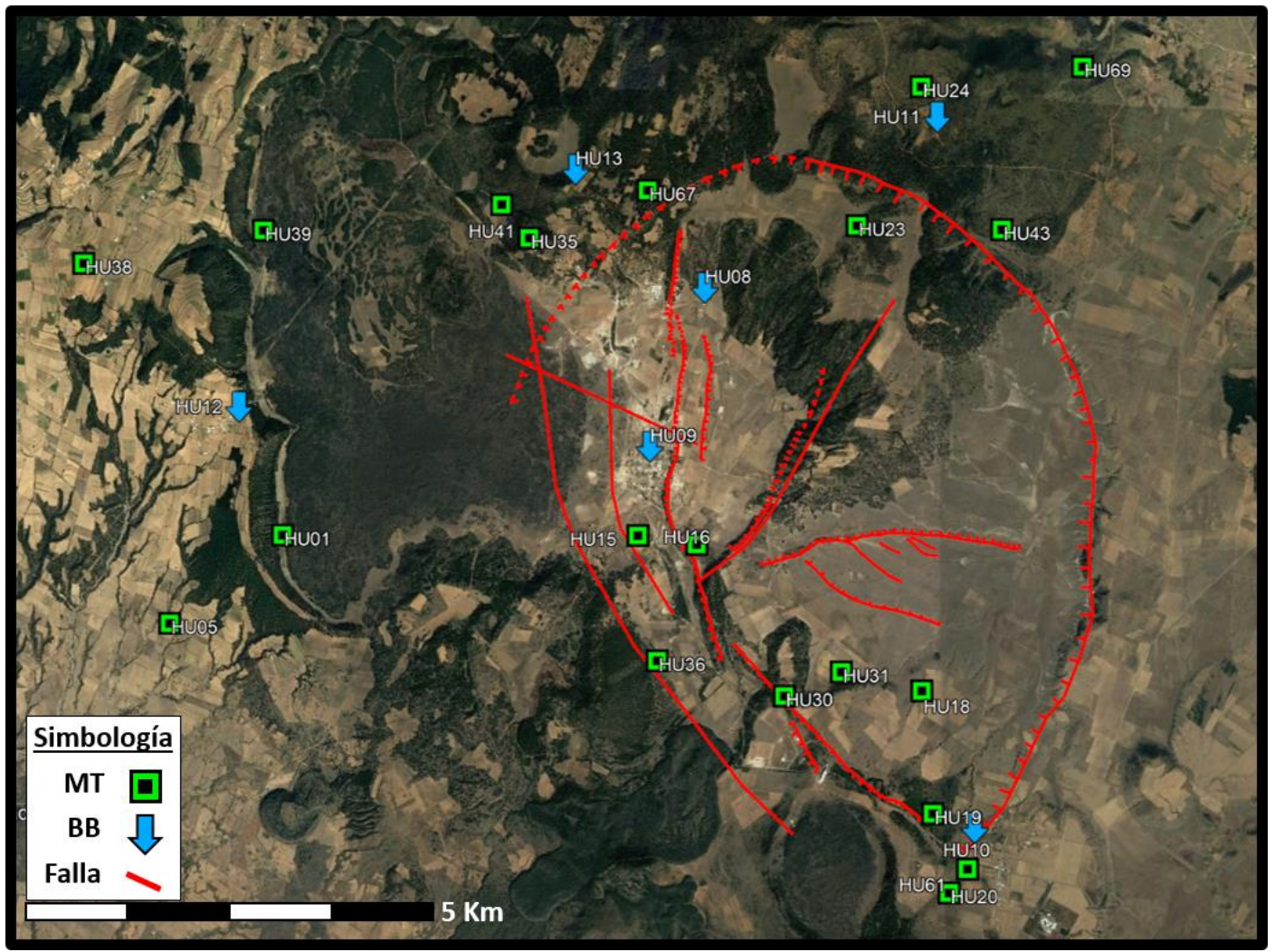
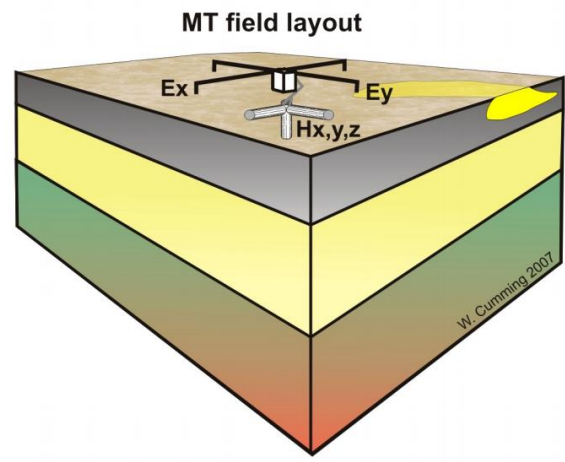
Degree of relationship





- 1
- 2
- 3
- 4
- 5
- 6
- 7

SURVEYS

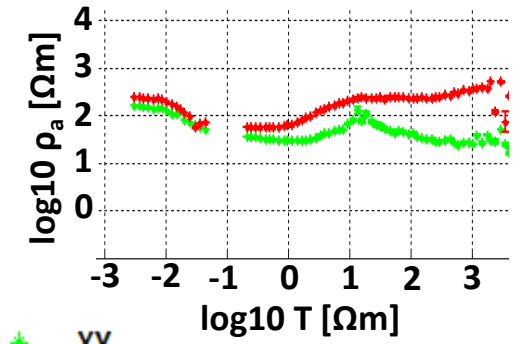
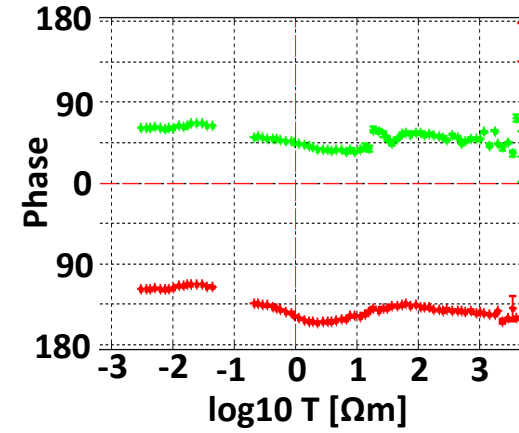
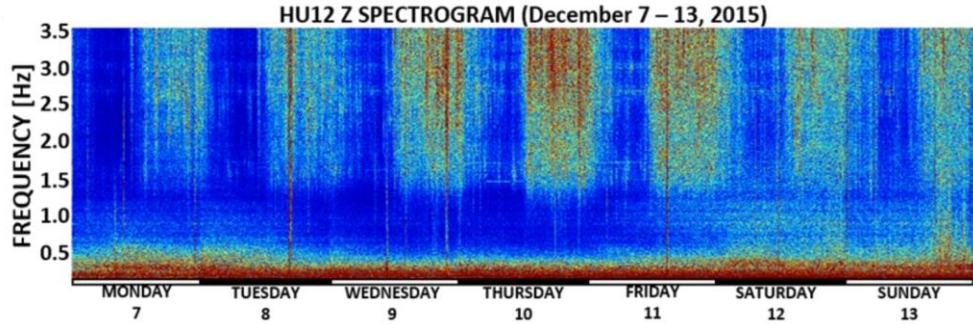




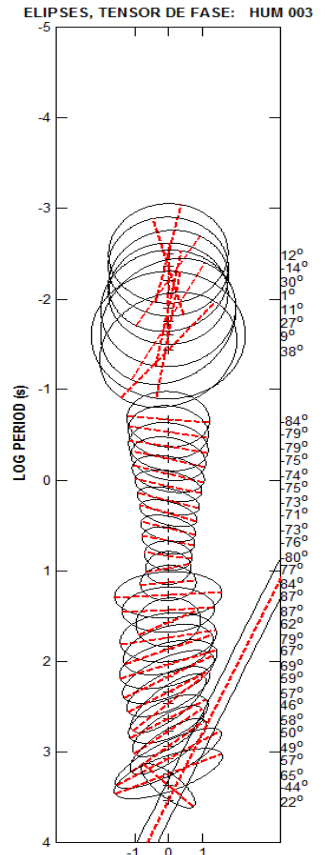
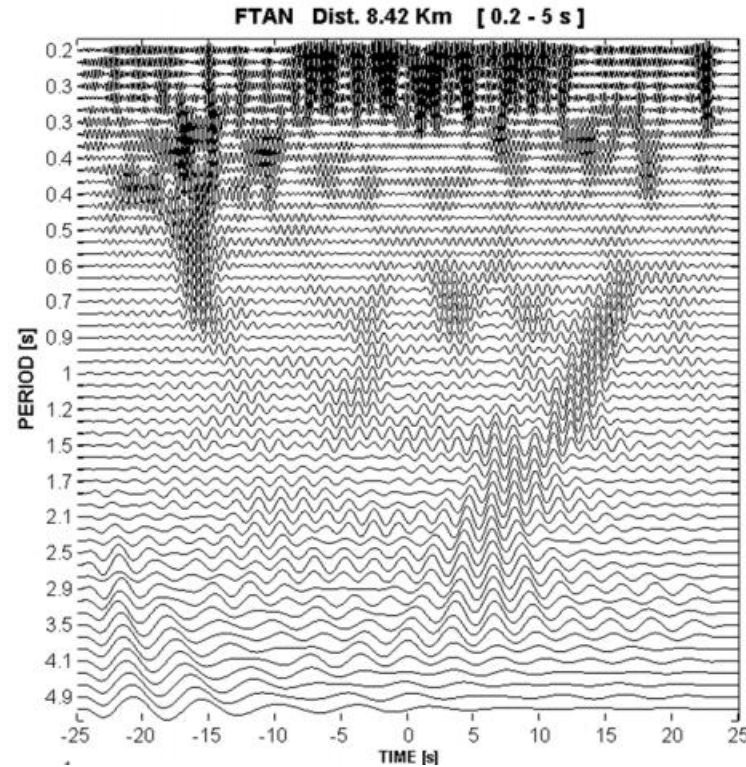
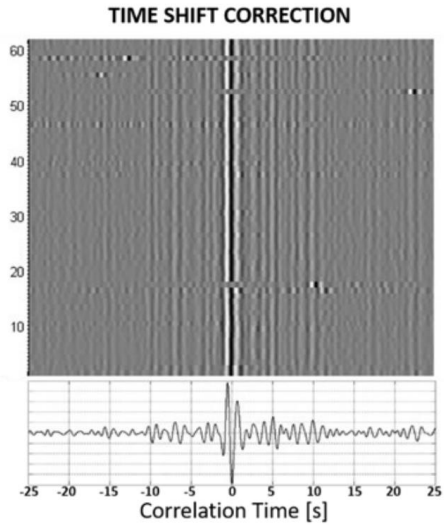
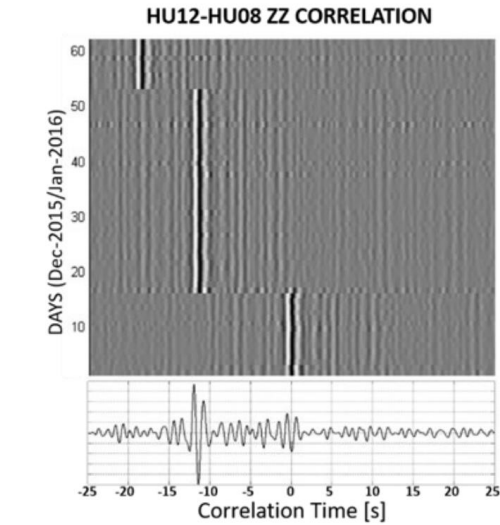
INTEGRAL CHARACTERIZATION OF A GEOTHERMAL SYSTEM CON PASSIVE SEISMIC AND ELECTROMAGNETIC METHODS

1	2	3	4	5	6	7
---	---	---	---	---	---	---

DATA



* XY
* YX



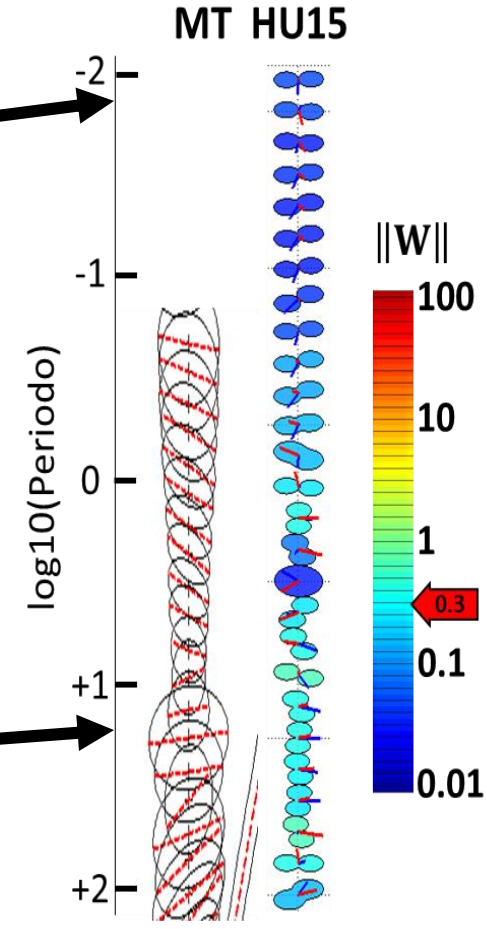
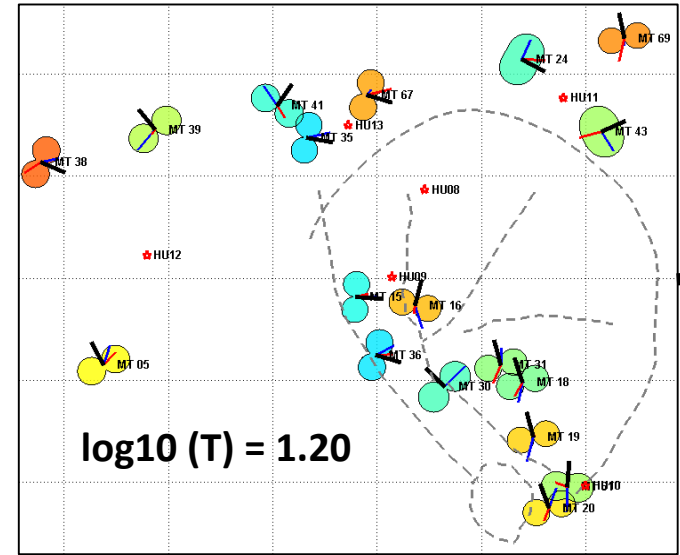
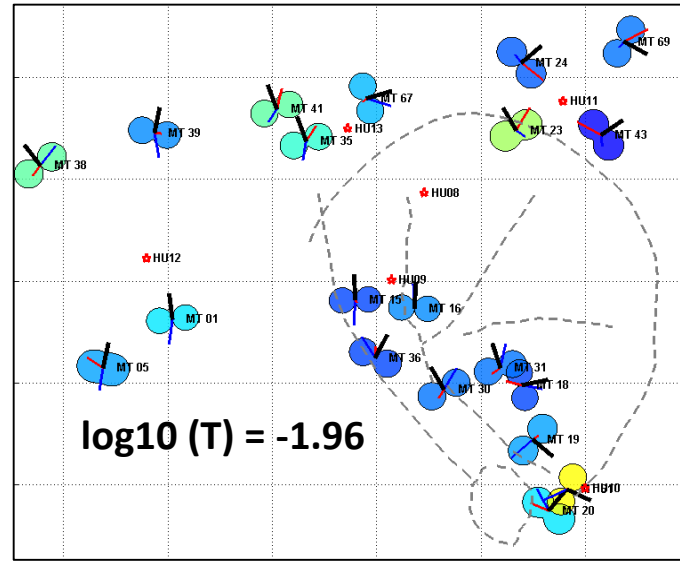
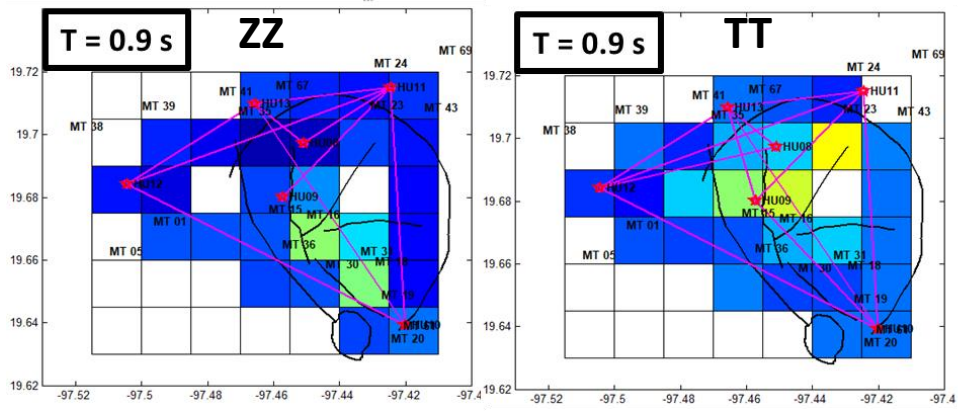
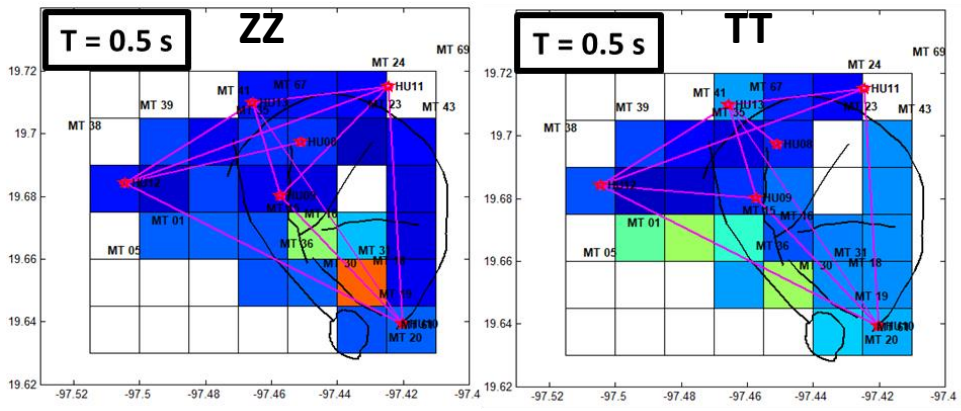
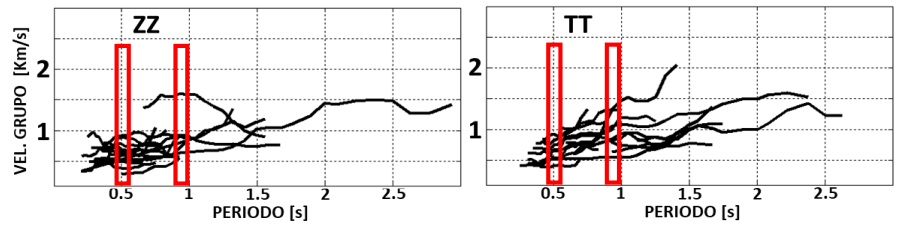


INTEGRAL CHARACTERIZATION OF A GEOTHERMAL SYSTEM CON PASSIVE SEISMIC AND ELECTROMAGNETIC METHODS

1	2	3	4	5	6	7
---	---	---	---	---	---	---

PROCESSING

$$H_Z(\omega) = T(\omega)H(\omega)$$

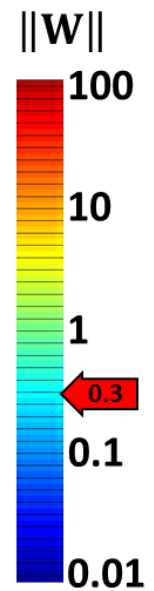




1	2	3	4	5	6	7
---	---	---	---	---	---	---

INTERPRETATION

Berdichevski & Dmitriev, 2010



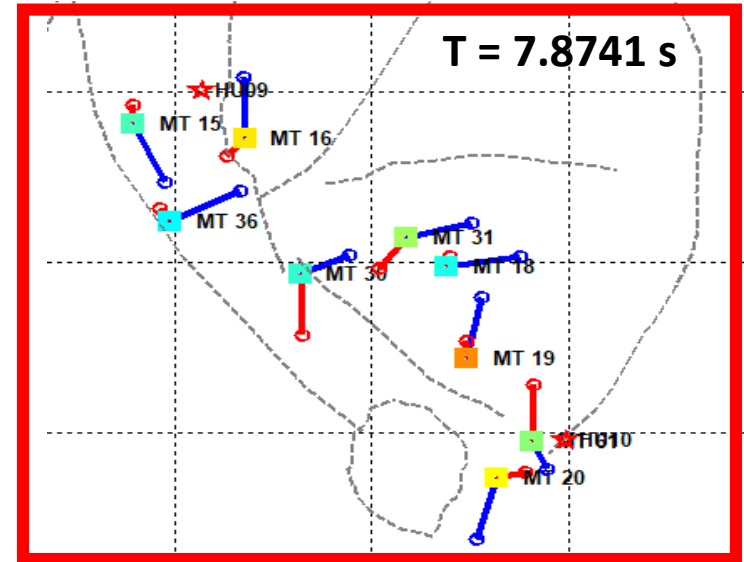
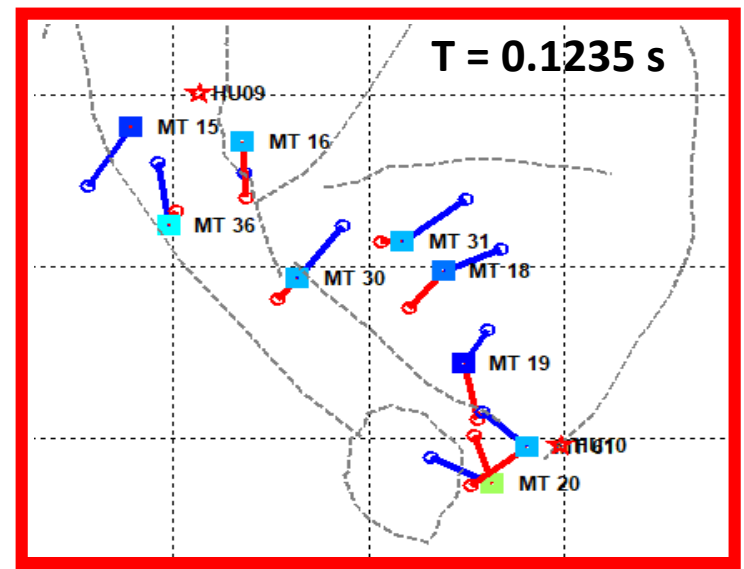
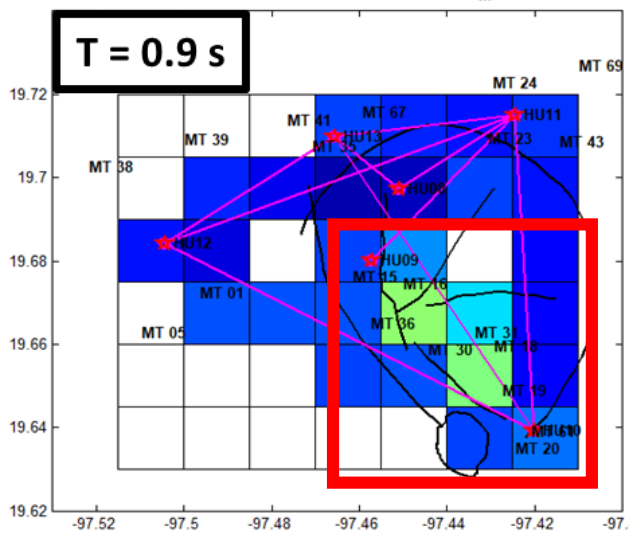
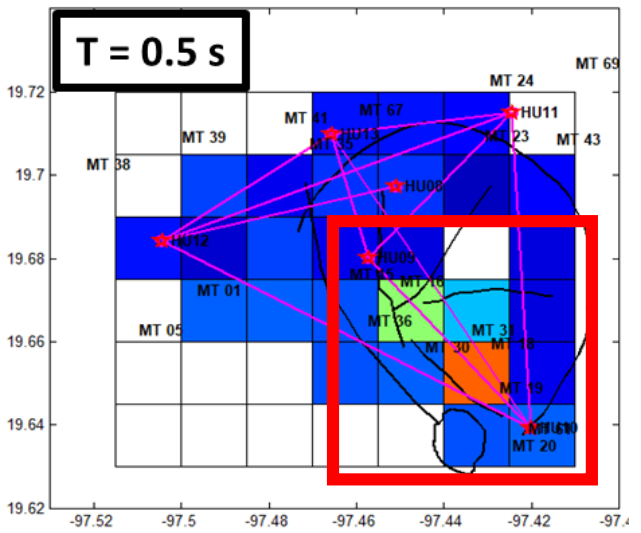
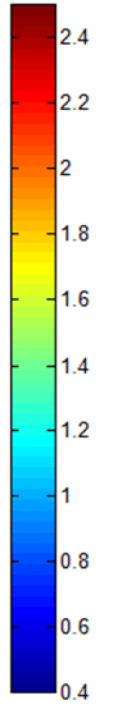
$||W|| \approx 0$ Homogeneous
 $||W|| > 0.3$ Strong geoelectrical heterogeneity

$||W|| \gg 0$ $Im[W] \gg 0$

 2D
 3D

Conductive Structure
 Resistive Structure

VELOCIDAD DE GRUPO [Km/s]





INTEGRAL CHARACTERIZATION OF A GEOTHERMAL SYSTEM CON PASSIVE SEISMIC AND ELECTROMAGNETIC METHODS

1	2	3	4	5	6	7
---	---	---	---	---	---	---

SYNTHESIS

SEISMIC

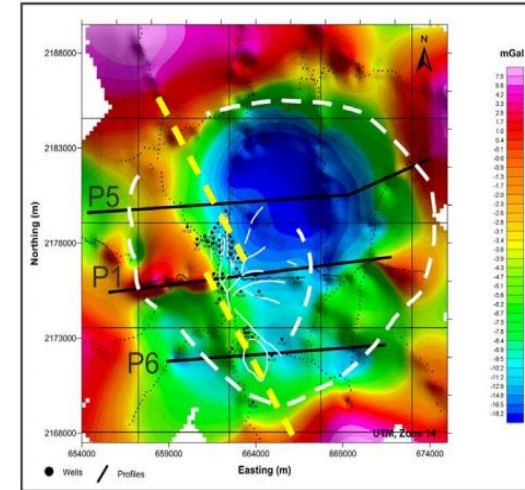
- Vp, Vs maps
- Vp/Vs, sensitive to phase .

ELECTROMAGNETIC

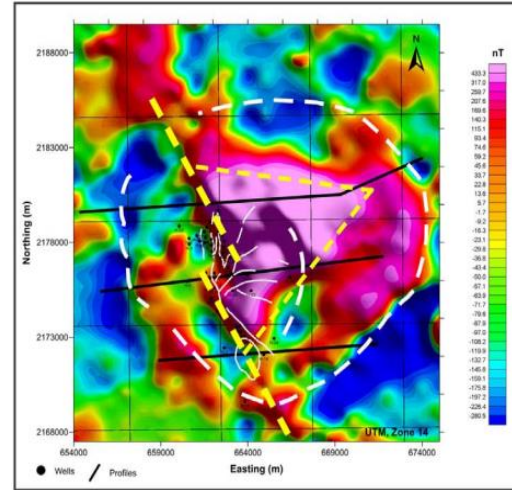
- MT Dimensionality of medium.
- Conductive/Resistive zones.

Need MORE DATA (Geophysics, Geology, Geochemistry, etc) to a full-integrated model.

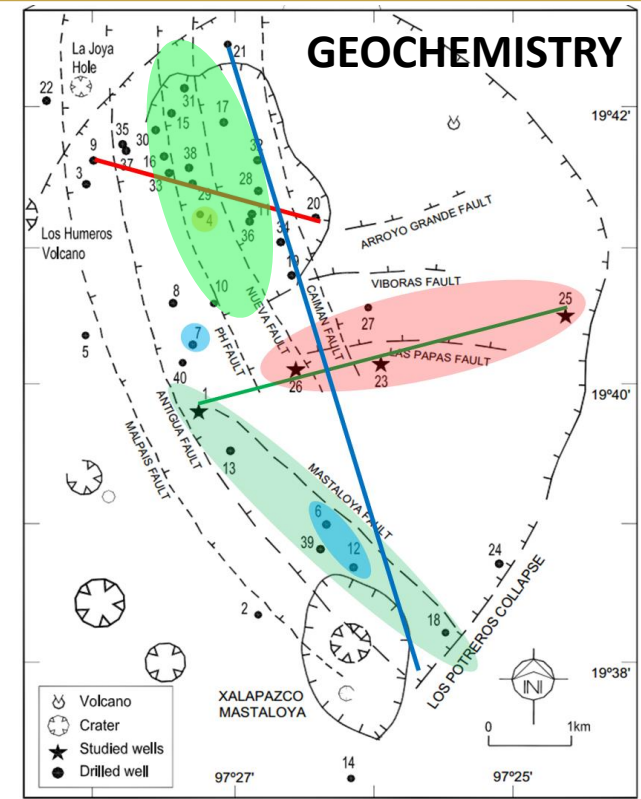
GRAVITY



MAGNETIC



GEOCHEMISTRY



- Acid Fluid
- Inferior Reservoir production
- Productive Zone
- Non-productive Zone
- High-Temperature fluids upward

GEOLOGY

