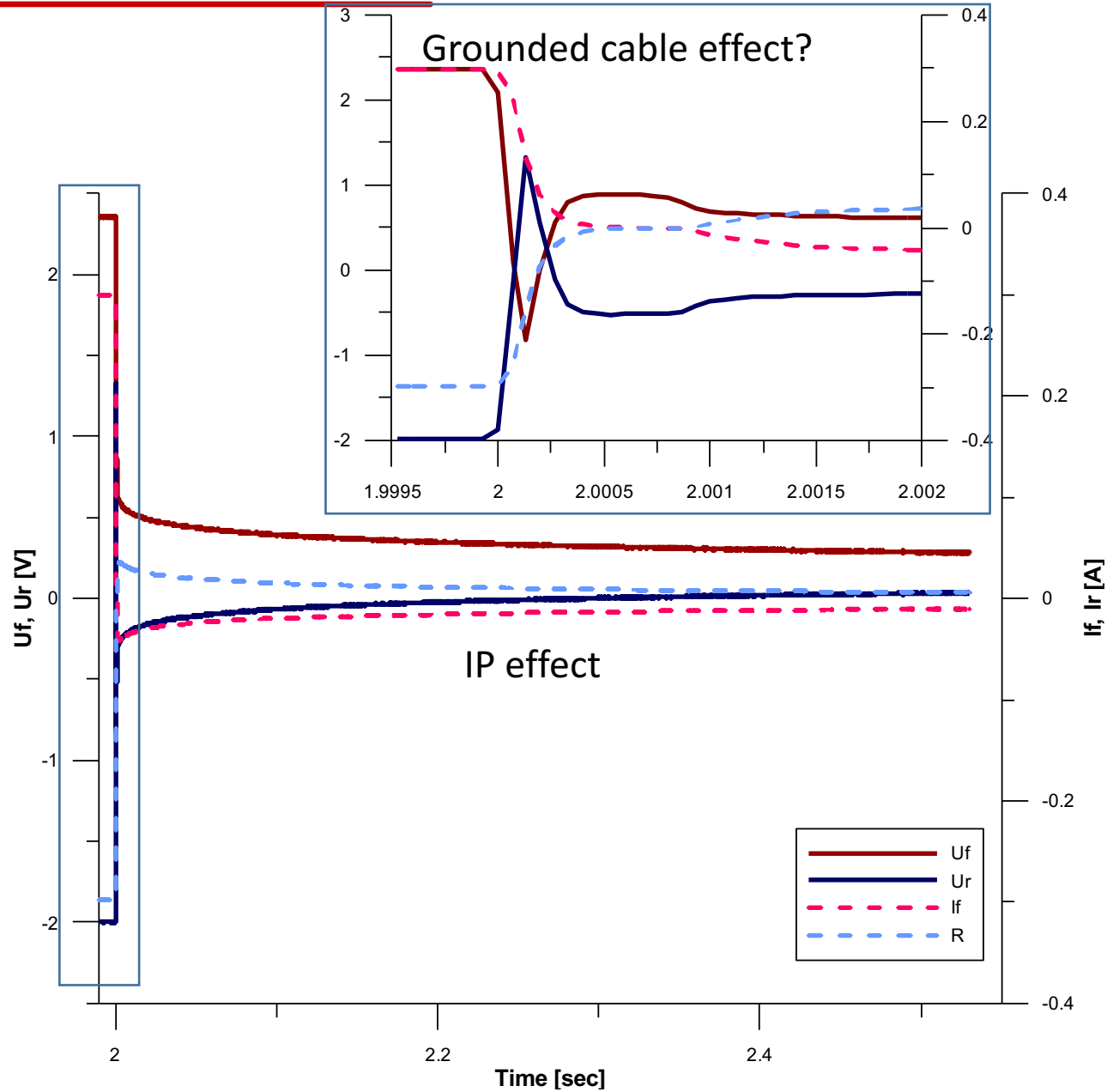


Birgit JOCHUM

(Dep. Geophysics)

IP geoelectrics

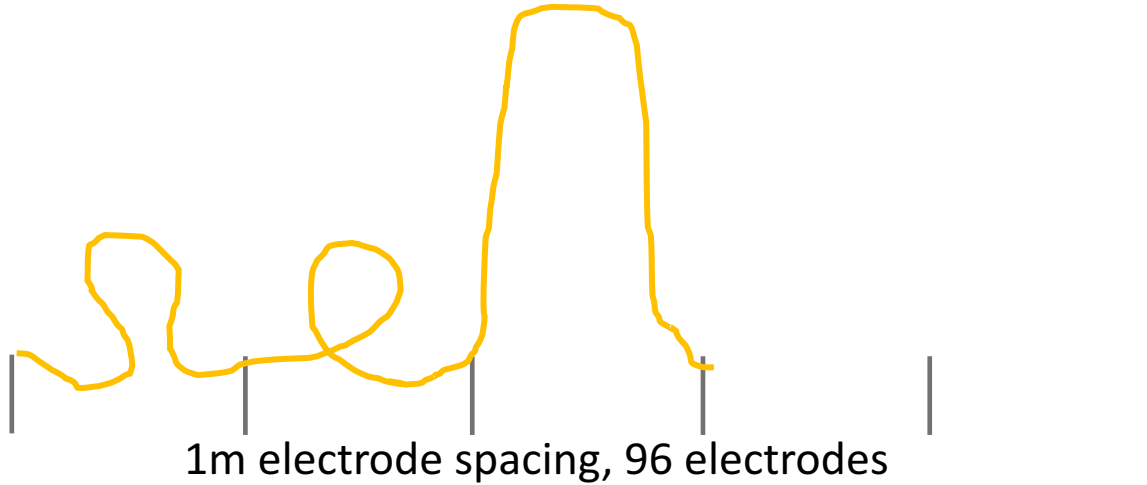
IP



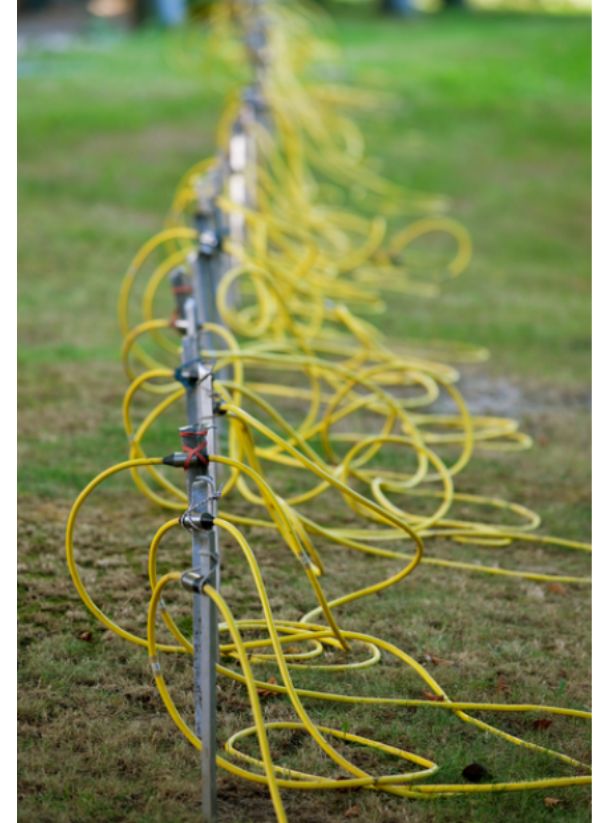
IP

What is the extra value of the grounded cable effect?

How to lay out the cable with outlets every 3m and 1 m electrode spacing for the grounded cable effect?



For IP does cable layout matter?

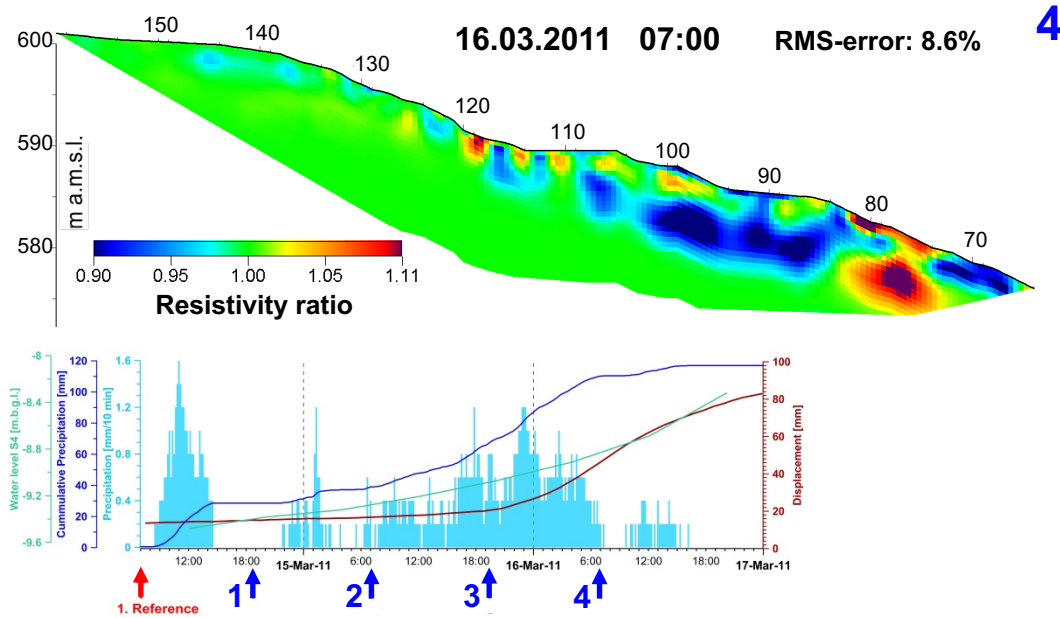


Some people use shielded cables to eliminate the grounded cable effect.

Would you get the same IP effect?

Advantage / Disadvantage (expensive, heavy...)

Geoelectric monitoring on landslides:



Monitoring on clay landslides: practically no change visible since rain and soil have approx. same resistivity -> IP?