

# CHEATHAM HILL PLAZA | ±750-1,600 SF

## 365 VILLA RICA WAY

### MARIETTA, GA 30064

FOR LEASE



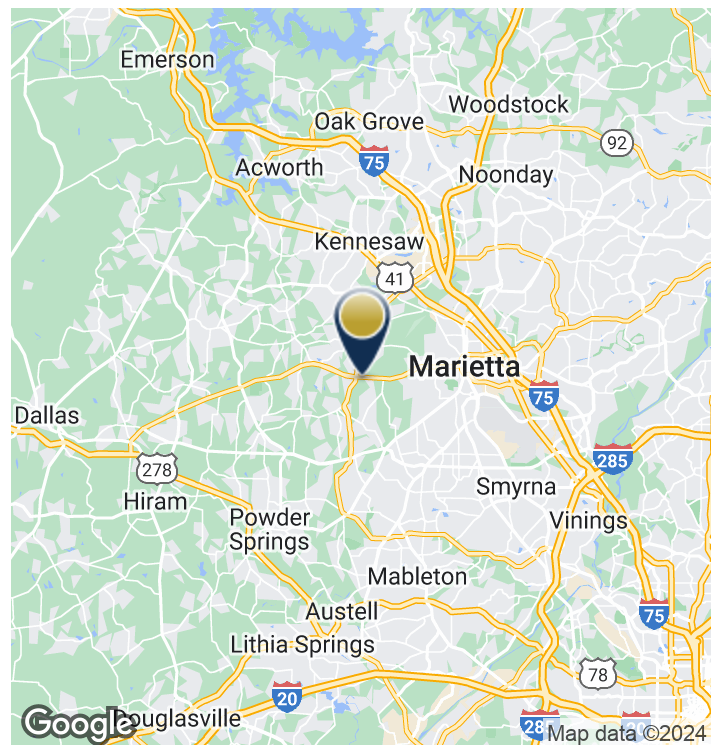
#### PROPERTY HIGHLIGHTS

- ±8,000 SF office/retail building
- ±750-1,600 SF available for lease
- Available at \$14-\$16/SF NNN
- High exposure corner property
- General Commercial zoning
- Monument signage available
- 30,170 VPD on Dallas Highway
- 15,340 VPD on Barrett Parkway
- 4/1,000 parking ratio

#### LOCATION OVERVIEW

Situated at the corner of Barrett Parkway and Dallas Highway in West Marietta, within Cheatham Hill Plaza. 4 miles to Downtown Marietta, 27 miles to Downtown Atlanta and 30 miles to Hartsfield-Jackson Atlanta International Airport.

Surrounded by an abundance of restaurants such as Ted's Montana Grill, shopping including The Avenue West Cobb, and housing options of all types and prices.



SEAN WILLIAMS | 404-876-1640 x126 | [Sean@BullRealty.com](mailto:Sean@BullRealty.com)

[BULLREALTY.COM](https://www.bullrealty.com)

Information contained herein may have been provided by the seller, landlord or other outside sources. While deemed reliable, it may be estimated, projected, limited in scope and is subject to change or inaccuracies. Pertinent information should be independently confirmed prior to lease or purchase offer or within an applicable due diligence period.

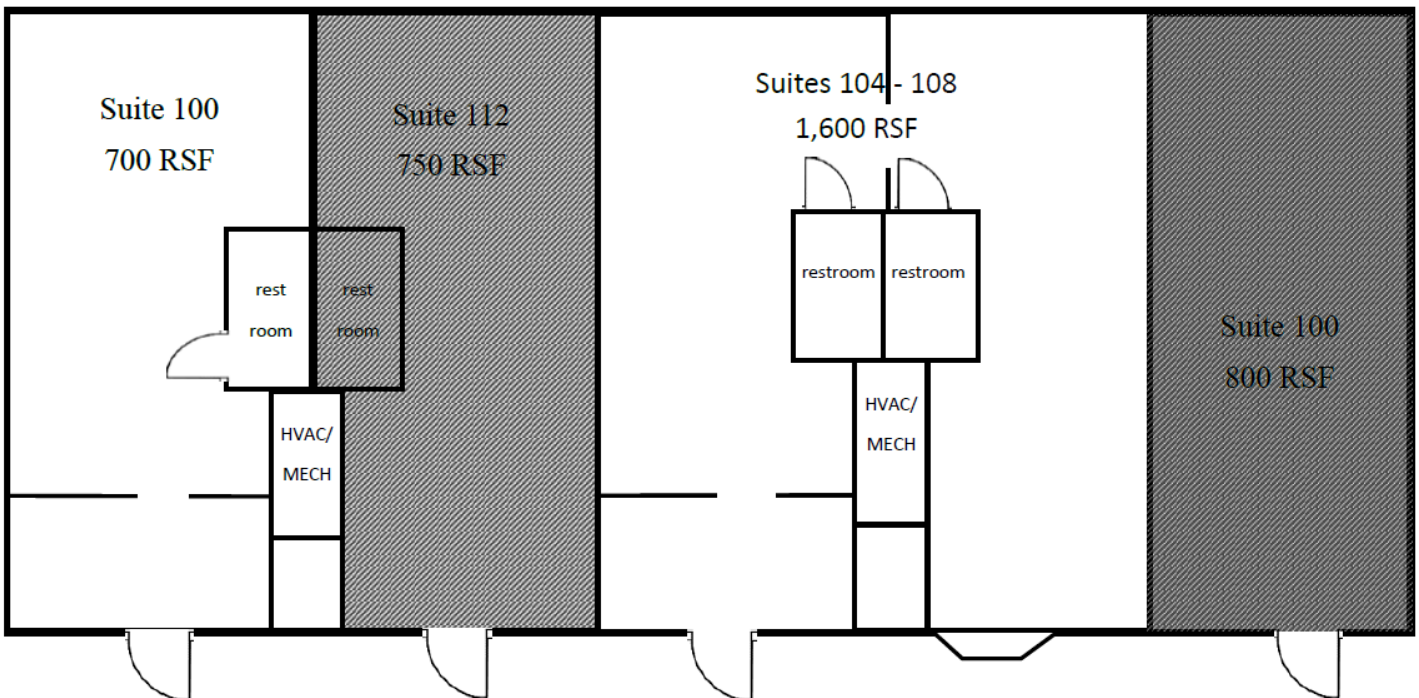
CHEATHAM HILL PLAZA | Georgia | 1 of 3

# CHEATHAM HILL PLAZA | ±750-1,600 SF

## 365 VILLA RICA WAY

### MARIETTA, GA 30064

FOR LEASE





CHEATHAM HILL PLAZA | ±750-1,600 SF  
365 VILLA RICA WAY  
MARIETTA, GA 30064

FOR LEASE



CHEATHAM HILL PLAZA | Georgia | 3 of 3



SEAN WILLIAMS | 404-876-1640 x126 | [Sean@BullRealty.com](mailto:Sean@BullRealty.com)

[BULLREALTY.COM](http://BULLREALTY.COM)

Information contained herein may have been provided by the seller, landlord or other outside sources. While deemed reliable, it may be estimated, projected, limited in scope and is subject to change or inaccuracies. Pertinent information should be independently confirmed prior to lease or purchase offer or within an applicable due diligence period.