



Lissan Primary School

Together we learn, grow and play in God's love and care



Dear Parents and Guardians,

May I take this opportunity to thank you for taking the time to read our school prospectus.

Although a prospectus can only give you a flavour of what our school community is like, I hope that it conveys the vibrant, welcoming and nurturing environment of Lissan Primary School.

Our school is a Co-Educational primary school situated three miles from Cookstown. The school was built in 1955 and is set in its own spacious grounds.

Our school motto is 'Together we learn, grow and play in God's love and care'. This motto reflects the values we hold at Lissan Primary School where we aim to provide our pupils with a happy, stimulating and secure environment in which each child's potential is developed to the full.

As a Catholic school our overriding aim is to establish and foster Christian values for life and to do this it is essential that we work in partnership with all our parents and the parish community. There is a warm and welcoming atmosphere throughout our school community and our staff team work hard for the benefit of the children.

Of course, no booklet can convey the real atmosphere of a school. I warmly invite you, therefore, to visit the school. We will be most pleased to see you and give you a tour of Lissan Primary School.

Kindest Regards,

Mrs Ciara McIntyre

Principal



SCHOOL DETAILS

| | |
|------------------------------------|---|
| School Name: | Lissan Primary School |
| Address: | 6 Claggan Road Cookstown Co. Tyrone BT80 9XE |
| Telephone: | 028 867 64581 |
| Email: | info@lissan.cookstown.ni.sch.uk |
| Website: | www.lissanps.com |
| Principal: | Mrs Ciara McIntyre |
| Chairperson Board of Governors: | Mr Adrian Quinn |
| Type of School: | Catholic Maintained School Boys and Girls 4-11 |
| Enrolment Number: | 113 |



OUR VISION

Lissan Primary School is a Catholic School that promotes high achievement and lifelong learning by working with children to:

- Be happy, confident and spiritual
- Develop a strong sense of self-esteem, respect for themselves and others
- Achieve excellence in Literacy, Numeracy and ICT
- Become versatile individuals who are ready for the opportunities and challenges of their future lives

We believe that each child will succeed through experiencing quality in:

- The promotion of Catholic Ethos that celebrates inclusivity
- Innovative teaching where we all work together for the continuous professional development of all
- A broad and balanced curriculum supported by up to date resources and a variety of extracurricular activities
- A supportive, motivating and safe environment with positive links to our families and community
- An ethos which celebrates all members of the community wherein everyone's voice is heard



MEET OUR TEAM

Principal

Mrs Ciara McIntyre

Teachers

Mrs Sharon Donnelly

Miss Martina Devlin

Mrs Róisín Laverty

Mrs Maria Hagan

Mrs Ciara McIntyre

Mrs Martina Coyle



Classroom Assistants

Mrs Noreen McHugh

Mrs Maeve Conway

Mrs Siobhán O'Neill

Mrs Susan Loughran



SEN Assistant

Mrs Claire McCrory

Clerical Officer

Mrs Maeve Conway

Mrs Tracey Timoney

Buildings Supervisor

Mrs Michelle Johnston



Unit Catering Supervisor

Mrs Rosalind Robinson

Catering Assistant

Mrs Jacqueline McAleer



OUR BOARD OF GOVERNORS

The Board of Governors play a full role in the life and work of the school. Members of the Board of Governors are volunteers from the local community. The Board also includes staff and parental representatives who are elected every four years.

The current Board membership of Lissan Primary School is as follows:

Chairperson/Trustee

Vice-Chair/Trustee

Secretary to Governors/Trustee

Teacher Representative

EA Representative

EA Representative

Trustee

Parent Representative

Mr Adrian Quinn

Rev. Fr Paddy Hughes P.P.

Mrs Joanna Neeson

Mrs Sharon Donnelly

Mr A. Mc Guckin

Mrs Mary-Anne Mc Aleer

Mr John Monaghan

Lisa McCrory



OUR SCHOOL DAY

SCHOOL HOURS

The school hours are as follows:

School opens at 8.30. All pupils are supervised in the school until class begins at 9.05am.

P1 – P2 09.05am – 2.00pm

P3 09.05am – 2.00pm (Term 1)
 09.05am – 3.00pm (Terms 2 & 3)

P4 – 7 09.05am – 3.00pm

We offer a Fun Club for pupils in P1, P2 and P3 who wish to stay until 3:00pm. These pupils may then be collected at 3:00pm or go home on the bus.

Children may arrive in school from 08:30 – 9:05am.

Children will go immediately to the hall

Whole school prayers/assembly take place at 9:05am.

Children are collected from the school gate at home-time.



TRANSPORT TO AND FROM SCHOOL

Pupils who wish to travel to and from school on the bus, and live 2 miles or more from the school, are eligible to use this service. Parents wishing to avail of this service must submit a completed application form by May.

Applications forms are available to download on the website:

transport.applications@eani.org.uk

In order to keep all our pupils safe, we ask that parents use the lay-by to drop their children off. Additional carparking is available in the lower carpark in St. Michael's Church – across the road from school.

Pupils should access the school through the Pedestrian gate.

Only staff and delivery drivers should use the car park for the safety of pupils.

The Bus drop off zone must always be kept vacant.



OUR SCHOOL UNIFORM

Shirt

Tie

V-Neck Jumper

Trousers

Skirt or Pinafore

Socks/ Tights (Girls)

Shoes

Blue

Blue/Navy stripe

Navy

Navy

Navy

Navy or White

Black shoes (all black trainers are acceptable)

The school ties and the school jumpers with our logo and crest are supplied by Kee's, Cookstown.

All other uniform items can be purchased in a variety of stores including Asda, Tesco, M&S, Dunnes Stores etc.

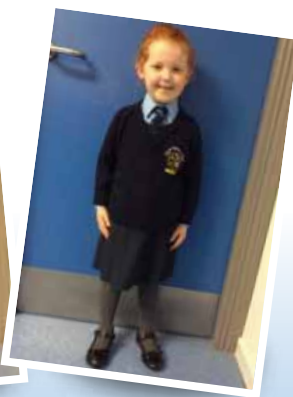
Embroiderus, Derryloran Industrial Estate can add our logo and crest onto navy jumpers if parents wish to avail of this.

It is important for pupils to wear correct clothing for Physical activities. On PE days and PE trips/ Blitzes pupils may wear our PE uniform to school.

Tracksuit bottoms

Blue polo shirt / tee shirt

Plain Navy (no logos)



ADMISSION ARRANGEMENTS

Criteria will be applied in the order set down by the Board of Governors of Lissan Primary School in selecting children for admission into P1. In enrolling a child at Lissan PS, a parent agrees to support the school in disciplinary matters and will continue to be responsible for the child observing the rules and regulations while he/she remains at the school.

ADMISSION CRITERIA

The principal, who has the delegated authority to act on behalf of the Board of Governors in this matter, will apply the following criteria to identify which children should be admitted either at initial admission to education (P1) or on transfer from another school. In selecting children for admission, children resident in Northern Ireland at the time of their proposed admission to the school will be selected for admission to the school before any child not resident.

1. Children of families who are ordinarily resident in the parish of Lissan.
2. Children whose siblings are currently pupils at Lissan PS.
3. Children whose siblings were pupils at Lissan PS or Crievagh PS.
4. Children whose parents were pupils at Lissan PS or Crievagh PS.
5. Children who, in the opinion of the Board of Governors, on evidence supplied by their parents/guardians and statutory authorities, have special medical and/or social needs.
6. Remaining places will be allocated to the eldest children by chronological age.

This criterion will also be used to discriminate within any oversubscribed criterion (except criterion 1).



ADMISSION ARRANGEMENTS CONTINUED....

CRITERIA FOR ENTRY INTO PRIMARY 2 TO PRIMARY 7

The following criteria will be applied in the order set down 1 – 4.

1. A pupil will be considered for enrolment provided that the school will not exceed its enrolment number as determined by the Department of Education.
2. A pupil may be accepted if this would not cause a class size in any year to exceed 30.
3. Children for whom their admission would not in the Board of Governors opinion, prejudice the efficient use of the school's resources.
4. Pupils will be accepted in order of application. If oversubscribed on this criterion, children will be selected based on the following sub-criteria in the order set down.
 - (a) Children of families who reside or are coming to reside in the Parish of Lissan.
 - (b) P2 children before P3, P3 before P4 etc.

ARRANGEMENTS FOR ADMISSION

In Term 3 new Primary One pupils and their parents/ guardians are invited to school for "Welcome/ Induction" Morning.



AWARDS

Here, in Lissan PS, rewarding and celebrating achievement and success is embedded within the ethos of our school. Through Whole School Assemblies and Prize- Giving, we aim to raise self-esteem and promote positive behaviour.

SAFEGUARDING

We are committed to safeguarding and promoting the welfare of children and we expect all staff and volunteers to share in this commitment. We work hard to maintain an environment where children feel safe and secure.

We ensure that we deliver a curriculum designed to offer opportunities for pupils to develop the skills they need to stay safe from abuse. We have very clearly identified procedures in place whereby children know that if they are worried that they will receive a consistent, supportive response.

We:

- Aim to raise awareness of child protection issues and equip children with the skills needed to keep them safe
- Develop and implement procedures for identifying and reporting cases or suspected cases of abuse
- Support children who have been abused in accordance with his/her Child Protection Plan
- Establish a safe and nurturing environment free from discrimination or bullying where children can learn and develop happily.



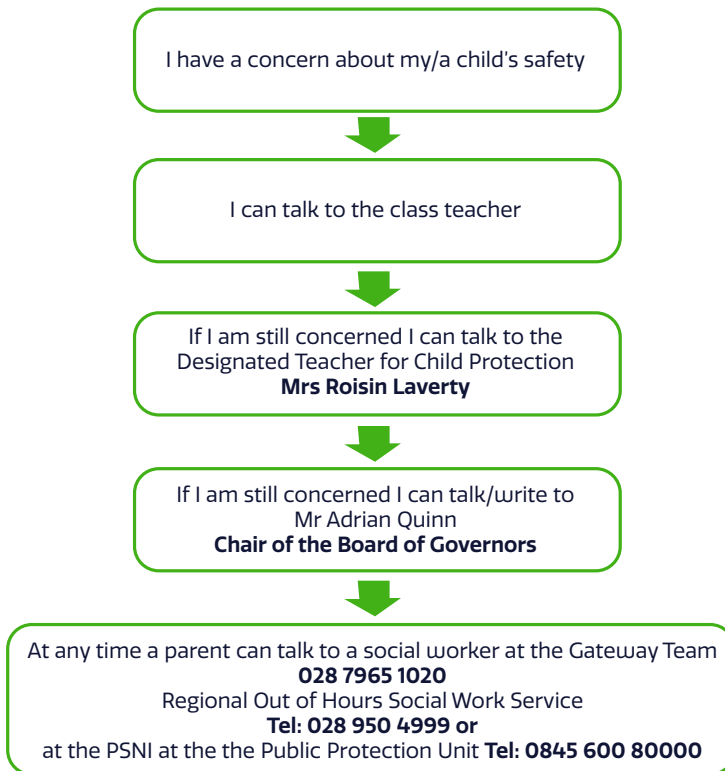
Our Safeguarding Team

Designated Teacher for Child Protection
Deputy Designated Teacher
Designated Governor for Child Protection
Chairperson of the Board of Governors

Mrs Róisín Lavery
Mrs Ciara McIntyre
Mrs Joanna Neeson
Mr Adrian Quinn

All parents receive a Safe-Guarding and Child Protection Policy which outlines Child Protection in more detail. Additional copies of this booklet are available from the school office.

How a Parent can make a Complaint/Voice a concern about Child Protection:



Anti-Bullying

All forms of bullying and harassment are unacceptable and are not tolerated within the school environment. All incidents will be taken very seriously and follow up in accordance with our anti bullying policy which is available from the school office/ website.

As a school we believe that bullying is best prevented through an ethos of mutual respect and equality. The raising of children's self-esteem and self-confidence is central to the work and life of the school.

Behaviour

At Lissan PS we believe that children learn best in a well organised, calm and secure environment where purposeful and self-disciplined behaviour is expected. We want every child in our school to feel confident, happy and safe. We have high expectations in terms of learning, behaviour and attitudes and encourage our children to develop similar beliefs in their own potential, together with pride in their achievement.

The aims of the school and rules of behaviour consistently promoted in each classroom are ones that emphasise positive behaviour and strive for excellence. We encourage and promote hard work and effort through praise and rewards systems throughout the school.



CURRICULUM

Language & Literacy

In Lissan PS we focus on developing each child's ability to understand and use language as an integral part of learning in all areas, to express themselves creatively and to communicate confidently using a variety of skills and media. We take a holistic approach towards Language & Literacy to include Talking & Listening, Reading and Writing, which extend across all areas of the curriculum.

In Key Stage 1 we use the Book Banding System, providing a wide range of genres to motivate and encourage children in their love of reading. In KS2, pupils are involved in the Accelerated Reading programme. They are provided with personal points targets for each term and are in enthusiastic in reaching their goals. Accelerated Reading is a stimulating and motivating programme which has been proven to enhance technical reading skills whilst encouraging a love for independent reading. We have invested heavily in a wide range of reading materials across the school.

Staff plan for exciting and interesting topics and link writing across the curriculum. Children participate in Modelled, Shared and Guided and independent reading. They are provided with a wide range of real-life stimuli for both fiction and nonfiction. Achievements are celebrated in class and at assembly through awards and certificates.

Each year children are encouraged to write and are stimulated by a range of styles from poets, posters, real life visits of author and during their imagination of this wonderful world.



Mathematics and Numeracy

In Lissan PS we aim to provide the children with numeracy skills which should help them make informed and responsible decisions throughout their lives. We believe that children should engage in a wide range of purposeful activities which involve them in areas of mathematical learning such as playing, exploring, investigating, doing and observing, talking and listening, asking questions, reflecting, drafting, reading and recording. Lissan PS provides a well-resourced and stimulating environment where children learn through taking part in oral work and a wide range of practical activities including games and ICT, to develop and consolidate their learning. Our pupils are encouraged to use their mathematical language to talk about their work and explain their findings. We have invested heavily to provide a wide range of resources and practical materials to engage the children in their learning. Teachers actively encourage the development of mental maths – with each lesson beginning with a mental “warm up”.

Maths Challenge Day

Our school participates in “World Math Day” and Mathletics. Using standardised data, each child is provided with a personal target to increase confidence and raise standards across the school. Achievements in numeracy are celebrated in class and during assemblies with personal rewards and certificates. Teachers encourage children to persevere with tasks, so gaining confidence in what they do and developing a positive attitude to numeracy. Children enjoy taking part in problem solving sessions throughout the year. They develop their problem solving and thinking skills working with IZAK 9 in whole group and class sessions.



ICT

As one of the three main drivers of the curriculum we feel developing pupils' Using ICT skills encourages them to handle and communicate information; solve problems; pose questions; and be creative using digital technology.

It is important that pupils develop their technical skills in a range of different types of ICT. Teachers plan for and deliver cross curricular learning which involve skills such as publishing, presenting, coding, managing data, art, investigating music and sound, creating and editing film and making animations. The emphasis in Using ICT is on pupils using digital skills appropriately while engaging in meaningful and purposeful activities, set in a range of curriculum contexts.

In preparing children for tomorrow we integrate ICT throughout all areas of the curriculum and have a wide range of technology available for children's use. Parent support helps us ensure that our children have access to emergent technology.

INTERNET SAFETY

The internet provides a wealth of information as well as teaching material and resources. In Lissan PS we use the internet with the pupils in the classroom as a way of creating and publishing content and to learn collaboratively. There are many positive ways in which good internet use can enhance, extend and support pupil learning within school. Online content is always checked by the school's filtering system and teacher to ensure its appropriateness.

We promote Internet Safety Week where we deliver up to date information and resources to all age groups. Through this week we emphasise appropriate contact online, content and conduct when using the internet. We feel that through promoting these areas each child will become a responsible digital citizen. E Safety Week covers topics such as grooming, cyber bullying, safe use of social networking, privacy and mobile/computer technology.



We believe that it is crucial to teach pupils how to use the Internet safely, both at home and at school, and we use the Kidsmart safety code to support our teaching in this area: Kidsmart has been developed by the Childnet charity and is endorsed by the DfES <http://www.kidsmart.org.uk>

We teach these valuable safety codes through the PSHCE curriculum and displays.

The main aspects of this approach include the following five SMART tips:

- **Safe** – Staying safe involves being careful and not giving out your name, address, mobile phone no., school name or password to people online.
- **Meeting** someone you meet in cyberspace can be dangerous. Only do so with your parents'/carers' permission and then when they are present.
- **Accepting** e-mails or opening files from people you don't really know or trust can get you into trouble – they may contain viruses or nasty messages.
- **Reliable** – Someone online may be lying and not be who they say they are. If you feel uncomfortable when chatting or messaging end the conversation.
- **Tell** your parent or carer if someone or something makes you feel uncomfortable or worried.



EARLY YEARS

Beginning school is one of the most important milestones for both you and your child. Here at Lissan PS we ensure that through close working relationships with parents, the transition from nursery or other pre-school settings to Primary 1 will be as smooth and enjoyable as possible

When visiting our school on open night, you will experience the variety of learning opportunities available to your child. Children are immersed in a play-based learning environment with opportunities both indoor and outdoor.

In June, prior to your child starting school, they will visit their classroom and meet their teacher. Primary 1 & 2 classes are assisted by learning support staff. We pride ourselves on always making parents/guardians welcome. Throughout the year, there will be opportunities to hear about your children's progress, through our curriculum evening and progress meetings with teachers. Your child will be immersed in a safe, caring, learning environment, where fun and their happiness is of upmost importance to us!



DRAMA

Drama provides great opportunities for developing creativity and allows children to express their ideas and feelings. At Lissan PS there are numerous opportunities for all our children to express themselves in this area. In the Foundation Stage children have opportunities to play in an imaginary world, assuming different roles and seeing their teacher in role.

As our children move into Key Stages 1 and 2 their drama experiences become more structured and children have opportunities to develop their improvisational skills, acting, mime and movement. These skills are presented at assemblies, school productions and Dungannon Feis. Through all these experiences our children gain confidence and build their self-esteem as well as developing their oral language skills.

MUSIC AT LISSAN PS

Lissan Primary School has a long successful tradition of music. All children can participate in musical experiences and performances, ranging from weekly choral singing workshops to performing at assemblies and services.

In addition to curricular music, children in P.4/5/6/7 will be offered the opportunity to learn guitar or violin. Lissan PS has a wide variety of successful musical groups, such as choir and traditional group. These ensembles represent the school throughout the year at various festivals, concerts and cross-community events.



ASSESSMENT AND REPORTING PROCEDURES

Children are continuously assessed using a variety of formal and informal testing. Assessment for Learning is an integral part of the Revised Curriculum. We see assessment as an integral part of the learning process, as children are actively involved in their own learning.

We ensure that children are given effective feedback which challenges and improves the quality of children's work as well as giving children an immediate and positive boost to their self-esteem. We also encourage children in the use of peer and self-assessment so that they can improve their own and others work.

The school also tests children regularly to ensure that they are making appropriate progress. These tests are carried out systematically throughout the year and a summative assessment is carried out at the end of the year. The results of these tests are available to parents at any time. Records of attainment and progression are kept on each child. These are passed onto each successive teacher and are used to inform teacher's planning for the future needs of each child.

Teachers meet with parents in the autumn term and will discuss the work that their child will be doing during that year. This also gives the teacher and parents an opportunity to discuss any difficulties the child might be having.

In the summer term, parents will receive a written report on their child, which will comment on the child's progress in all curricular areas as well as pastoral / behavioural comments. Teachers will also comment on a focus for development for the child so that parents are aware of areas their child can improve on to develop their potential.

At the end of each Key Stage the children take part in statutory assessments in Using Mathematics, Communication and in Using ICT.



ADDITIONAL LEARNING NEEDS

In Lissan PS we believe that every child is unique and special, and we aim to provide a broad and balanced curriculum for all. We are committed to developing policies and practices that are inclusive.

Within our classrooms our highly trained teachers can identify any difficulties your child may be experiencing. They work hard to ensure that appropriate support is put in place to enable your child to learn and achieve.

We always strive to ensure excellent communication with our parents so that you are always kept up to date with your child's progress.

We also work closely with numerous outside agencies to tailor the best support for each child in our school. (Some of these agencies and support strategies have been listed on the right)

- > *Education Authority SEN Team*
- > *ASD Support Service*
- > *Small Group Sessions with Teachers*
- > *Behaviour Support Service*
- > *Educational Psychology*
- > *Maths Recovery*
- > *Family Hub*
- > *Roots of Empathy*
- > *Learning Support Assistants*
- > *Empower*
- > *C.A.M.H.S.*
- > *R.I.S.E.*
- > *LTSS*



COMMUNICATION WITH PARENTS

Parents are a child's first and primary educators. We aim to build effective working relationships with parents so that we can provide the best possible learning experiences for our pupils. We work in partnership with all our parents, grandparents and the parish community. The success of our school depends on good co-operation between staff, pupils and parents. If you have any talents/ free time that you think could benefit the pupils in any way, please make us aware of these, we greatly encourage your involvement.

It is the aim of Lissan Primary School to involve parents in the education of their children and to keep parents fully informed about their children's progress and about school life in general.



We have various forms of communication with parents:

Informal discussions: Our teachers are very approachable and recognise the value in fostering successful working relationships with parents.

Website: Our school website app (www.lissanps.com) is free to download to your mobile phone. This will continually keep you up to date with all school news. Our website has a wealth of information including policies and curriculum information.

SEESAW: an interactive online platform for communication

Parent Mail Text Messaging Service: From time to time you will receive text messages from the school as a reminder of trips, school closure etc.

Notes/Newsletters: Parents are kept informed of on-going curricular and organisational developments, dates for the diary and other important parental information using notes/newsletters.

Policies: All our school policies are on display outside our school office. Copies can be obtained from the office if requested.

Prospective/New pupils: Parents of children who have applied to be enrolled in the school will be invited to a meeting in May. At this meeting they will hear about life in Lissan Primary School and have an opportunity to meet with the Principal and their child's teacher and classroom assistant.

CATHOLIC ETHOS

We are very fortunate to be situated adjacent to St. Michael's Church in Lissan, where our pupils are always made to feel welcome by Fr Seamus Mc Ginley and Fr Paddy Hughes. Mass is celebrated with the children in St. Michael's Church every first and third Friday morning of the month. The children prepare for reading the Liturgy of the Word and Singing in the choir. Our pupils are active participants in the life of the Church and feel very much at home in God's house.



Our school day begins and ends with a prayer. We believe that every child in our school is an important person created by God, entrusted to us by their parents and we endeavour by word and example to help our children experience the Christian way of life.

Sacramental Preparation is an important part of our Religious Education. Our P4 pupils are prepared for their First Confession and First Holy Communion and our P7 pupils prepare for Confirmation in Term 2.



In Lissan Primary School we aim to instil the importance of charity from a young age. As part of our Catholic faith our pupils learn that God is present and active in their lives and in the world.

We are blessed to have extremely generous parents, teachers and pupils who whole-heartedly support our school charities Action MS and Mary's Meals.

Lissan Primary School have earned the reputation of being a 'giving' school community. We are very proud of this status and will continue this tradition.

LINKS WITH THE COMMUNITY

At Lissan Primary School, we pride ourselves with our strong community links.

We link with the local GAA club, St. Michael's GAC and support each other at various fundraising events. We have our Annual Sports Day at MUSA with our neighbouring school, Churchtown Primary School.

We enjoy having members of our community visit the school to enhance our learning and educational experiences and on special occasions, such as Grandparents' Day, Prize-giving and Open Days.



We have strong links with our local nursery school, Lissan Cross-Community Playgroup.

We engage in Cross-Community ventures with Churchtown P.S, Donaghey P.S, and Gaelscoil Eoghain through our Shared Education Project

Through our Reading Partnership Programme we cluster with St. Patrick's Primary School in Moneymore, Donaghey Primary School and St. Joseph's Primary School in Killeenan.

LINKS WITH POST-PRIMARY SCHOOLS

Lissan Primary School appreciates that transition from primary to post-primary can seem daunting to our young Year 7 pupils. To ease this transition, we have been involved in an Education Authority KS2/KS3 Transition Programme which allows us to build strong links with our local post-primary schools.

We enjoy visiting the schools for a variety of events such as Taster days, ICT events, sports blitzes, Christmas shows, math competitions, retreats and technology projects.

In Term 3 some of our past pupils are invited back to our school to share their experiences with our P7 pupils who are preparing to leave. This is very rewarding for our past pupils and is informative and reassuring for our P7's.

We are a progressive, forward-thinking school and we strive to ensure that our pupils have a happy, successful and rounded experience of primary school learning which will equip them to be contributors to their community and society in the future and will provide them with skills to become life-long learners.



SPORT

Aims

1. To encourage children to have a positive attitude to all leisure activities and sports through enjoyable experiences.
2. To encourage self-discipline, responsibility, self-confidence, self-esteem, respect for rules and promotion of a sense of fair play.
3. To allow children to develop at their own rate and to achieve their maximum potential.
4. To develop and maintain physical mobility and flexibility.
5. To prepare pupils to make use of their leisure time with a view to carrying their sporting and social interest onwards into adult life.
6. To develop an understanding of the importance of exercise in maintaining a healthy lifestyle.

Sports Facilities available to pupils at the school:

Swimming Pool – Cookstown.

School playing field.

Rounder's Court in school yard, school field & Lissan GAC field.

Football pitch – Lissan GAC field.

Sports Available to Pupils at Lissan Primary School.

Gaelic Football

Hurling/Camogie

Soccer

Running

Handball

Basketball

Rounders

Tennis

Swimming

Athletics

Gymnastics



HOMEWORK

Lissan Primary School sees a value in children engaging in homework as a means of revising work done, in discovering information unavailable in school, in involving parents in their children's studies and in the development of good work habits. Against this must be balanced each child's need for recreation and the development of private interests and hobbies.

The amount of homework should not exceed that which can be done in:
20 minutes in P1 and P2,
30 minutes in P3 and P4
30–45 minutes in P5, P6 and P7.

A recently revised homework policy is available on request.



AFTER SCHOOL ACTIVITIES

In the last number of years, we have been able to provide children with several after school activities:

Golf
Musical Theatre Workshops
School Choir Practice
Tin Whistle lessons
ICT
Football training
Rounders
Running club
Accelerated Reading club
Gardening club
Arts and Crafts club

These activities take place from 3pm to 4 pm

At present, these clubs are available to children in P3 (in Terms 2 and 3) to P7.



READING PARTNERSHIP PROGRAMME



We are proud to be able to say that our school has been repeatedly rated by the Literacy Advisory Team, as an example of outstanding excellence in the delivery of the Reading Partnership Programme. The programme is aimed at pupils who are already on their way to becoming successful readers but need that extra boost to fulfil that aim. After 10 weeks of intensive yet enjoyable one to one support in a relaxed environment, our pupils have not only shown measurable gains in their reading ability but have also developed a greater interest in reading.

We embarked on training for the programme almost twenty years ago when it was first launched. Due to the dedication of the numerous volunteers within the local community and our own classroom assistants, the programme has grown from strength to strength.



Our school has hosted a series of training days for twenty-two volunteers & Classroom assistants from Donaghey P.S, St. Joseph's P.S Killeenan and St.Patrick's P.S. Moneymore. Ten of these volunteers represented our own school, which means that we have secured a very high level of support for our pupils in the years ahead. Sincere thanks to all our volunteers.



OUR SCHOOL COUNCIL

Lissan PS have an active School Council who have been elected by their peers to represent them and their views. In line with Article 12 of the United Nations Convention on the Rights of the Child (UNCRC) all children should have a say in decisions that affect their lives. Our School Council provides a meaningful way in which pupils can voice their opinions and have their views considered in decisions which impact upon them. The Student Council meets after school to raise and consider items of business. Agenda's and minutes are kept and along with the School Council co-ordinator we conduct successful meetings.

In recent years our School Council have campaigned and been successful in delivering the requests and suggestions of fellow pupils:

- New pedestrian footpath
- Picnic tables
- Wall mural in Assembly Hall
- New curtains in Assembly Hall
- New school sign
- New Personalised door mats
- A Worry box

Our School Council are currently working on new projects;

- A new, safe car park
- Introducing the 'daily mile'
- A new school prayer
- Further Improvements to our playground



ECO-SCHOOL



We are very proud to be an Eco-School!

We are delighted to have had our Green Flag status renewed in April 2019.

All the children in our school show an appreciation for the place they live in and are wholly committed to projects that encourage environmental sustainability on site.

We would welcome any support that our parents or grandparents might be able to offer us with regards to improving our school grounds, growing our own produce and gardening.





www.lissanps.com

I hope this prospectus has provided you with
an insight into the wonderful school life at
Lissan Primary School.

You are very welcome to visit our school and
I have no doubt you will find the school a
warm and welcoming place to be.

Our staff pride themselves on being very
approachable and we will happily show you
around and answer any questions you may have.

We look forward to working with you and
your child/children in the future.



www.gortreaghprinting.co.uk 028 8676 3377