

Homework – WC 30th November. Due – 7<sup>th</sup> December.

Please log into My Maths and complete task titled “Column addition”.

3 Smileys will be rewarded to those who have a go! Let me know if you need any help.

Well done to the 12 children who had a go at last week’s homework! 3 smileys will be rewarded to you.

Remember you must regroup when the column is more than 10!

Q1 - Adding double and triple digits

Work out these additions.

$$\begin{array}{r} 22 \\ + 43 \\ \hline \square \square \end{array}$$

$$\begin{array}{r} 44 \\ + 26 \\ \hline \square \square \\ \square \end{array}$$

$$\begin{array}{r} 28 \\ + 58 \\ \hline \square \square \\ \square \end{array}$$

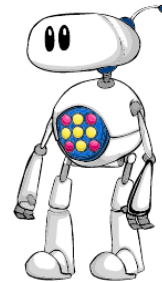
$$\begin{array}{r} 97 \\ + 76 \\ \hline \square \square \square \\ \square \square \end{array} \quad [4]$$

$$\begin{array}{r} 222 \\ + 55 \\ \hline \square \square \square \end{array}$$

$$\begin{array}{r} 597 \\ + 259 \\ \hline \square \square \square \square \\ \square \square \end{array}$$

$$\begin{array}{r} 367 \\ + 275 \\ \hline \square \square \square \square \\ \square \square \end{array}$$

$$\begin{array}{r} 507 \\ + 305 \\ \hline \square \square \square \square \\ \square \end{array} \quad [8]$$



Q2 - Anyone for tennis?

A tennis club has the following members:

men 308  
women 161  
boys 85  
girls 56

+			
<hr/>			
<hr/>			

How many members does the club have altogether?

--	--

[4]