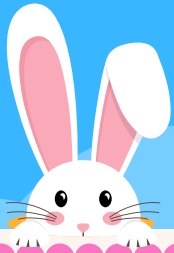


# RAINBOW RAFFLE



FS2

YEAR 1

YEAR 2

YEAR 3

YEAR 4

YEAR 5

YEAR 6



Friday March 28th is  
a non-uniform day.

Please bring a donation in the  
colour of your year group to  
add to a colourful family  
hamper which will be  
available to win during our  
Easter Rainbow Raffle!

Donations could be:

snacks, drinks, alcohol, toys, stationery,  
toiletries, homewares, games, crafts etc..

The draw will take place at the  
Easter Scavenger Hunt  
on Thursday 17th April 2024.