

To learn, your child
needs to be in school
and on time.



Value your child's
education and enable
them to be
the best that they can be.

Welcome to Year One



Spring Term 1

Our vision: 'Life in All its Fullness' (John 10.10) and our Christian Values are the foundations to affect change from within the heart of the community.

Children are encouraged to develop strong aspirations *educationally, socially, morally* and *spiritually* with a desire to make a positive difference in the world.

Our Values

Tolerance My command is this: love each other as I have loved you. John 15:12	Thankfulness In everything give thanks. 1 Thessalonians 5:18 	Respect Be kindly affectioned to one another with brotherly love. Romans 12:10
Patience Whoever is patient has great understanding. Proverbs 14:29 	Kindness Love is patient and kind. 1 Corinthians 13:4 	Joy You will go out in joy and be led forth in peace; the mountains and hills will burst into song before you, and all the trees of the field will clap their hands. Isaiah 55:12
Hope But as for me I will always have hope. Psalm 71:14 	Honesty Do that which is honest. 2 Corinthians 13:7	Gentleness Let your gentleness be evident to all. Philippians 4:5
Friendship A friend loves at all times. Proverbs 17:17 	Forgiveness Be kind to each other, tenderhearted, forgiving one another, just as God through Christ has forgiven you. Ephesians 4:32 	Love Let us not love in word or talk but in deed and in truth. 1 John 3:18

		<p>Please God, Help us to do all the good we can, In all the ways we can, In all the places we can, To all the people we can, As long as ever we can. Amen</p>
--	--	--

Coffee mornings

Tuesdays at Holly Hill Church school
8.45am – 10.30am

Please come along for a cuppa and a chat!

We are very thankful for a fantastic network of support systems that our wonderful families can access. This includes - Pathfinders, citizens advice, food banks, housing, SEN support, Mental health support, uniform and more. It would be great to see you there.



Birmingham SEMH PATHFINDER

We provide early help family support
and
we are available in your
school!

Our service includes...

STRENGTHENING FAMILY RELATIONSHIPS

- Support with navigating the challenges of parenting
- PIE and NVR programmes
- Activities and support centred around special educational needs

SUPPORT WITH IMPROVING HEALTH

- Mental health
- Physical health
- SEND support

SUPPORT AROUND CONCERNS

- Worries around Domestic Abuse
- Worries around drug or alcohol misuse
- Worries about exploitation

HOUSING AND FINANCIAL SUPPORT

- Benefit advice and checks
- Support with applications & appeals
- Debt advice
- Housing advice

And so much more...

**If you are interested please speak to
your school's receptionist to find
out further information!**

Reminders Start and End of day

	Arrival time	Collection time
Nursery	8.30	3:00
Reception	8:30-8.40	3:10
Year One and Year Two	8.30-8.40	3:10

At the start of the day, children are to arrive at their classroom door by 9.00am where they will be greeted by their classroom teacher.

On arrival, the children will be offered a piece of fruit as a light snack before learning commences.

At the end of the day, doors will open at 3.10pm for you to collect your child from their classroom.

Please stand well clear of the exit doors and wait for your child to come out to you.

If children arrive, or are collected late, parents must report to the school office.

Contact with Staff

During drop offs and collections, it will not be possible to talk at length to your child's teacher on the door as this time can be very busy.

If you need to speak to an adult in school, please do so via telephone: 0121 675 8700 or you can email your child's class teacher directly.

Miss Lewis, Maple Class: maple@hollyhill.bham.sch.uk

Mrs Bayliss, Fir Class: fir@hollyhill.bham.sch.uk

If you need to speak to the office staff, we will operate a one-in-one-out system in the office reception area at the front of school.

Reading

Reading is at the heart of everything we do here at Holly Hill and we want to help create a world where everyone is reading their way to a better life.

Research shows that reading for pleasure can:

- Promote better health and wellbeing.
- Help build social connections and relationships with others.
- Help children access other areas in their learning.
- Create more possibilities for future lives and achievements.

*Reading **every day** has a huge impact on your child's ability to read well. Please ensure that you spend a few minutes each day listening to your child and helping them to read. Asking questions and discussing images and what has been read can be extremely beneficial in the progression of your child's reading.*



All children should have a book bag. Please make sure that your child's **book and book bag is in school everyday.**

Sending home regular letters is one of the many ways we communicate with you, so please make sure you check it daily.

Animals and Seasons

Year One, Spring Term

Science

What do I already know?

I can name the different body parts.

I can recognise the five senses.

I can recognise what different animals eat.

Our Big Questions:

Which animals live in or near seas and oceans?



Key Vocabulary :

Weather, sunny, rainy, windy, snowy, frosty, hot, warm, cold, sleet, hail, seasons, winter, autumn, summer, spring, sun, sunrise, sunset, day length, morning, evening, light, dark, moon, afternoon, animal, live,

During this journey we will learn:

- * To recognise and name different animals that live in or near the sea.
- * To research facts about animals that live in and around the UK.
- * To describe different weather patterns.





What is Sikhism?

Year One, Spring Term

Our Big Questions:

What is Sikhism?

What do Sikhs believe?



Key Vocabulary :

Sikh, Sikhism, believe, pray, 5 Ks, festivals, similarities, Gurdwara, temple, worship, Guru, Guru Granth Sahib, Guru Nanak, God, equal, respect,

During this journey we will learn:

- * To share my own thoughts and ideas about other religions.
- * To identify where Sikhs pray.
- * To recognise the importance of the Five K's.

Life in Year One..

The Year One Team

- Miss Parsonage—Key Stage 1 Leader
- Miss Lewis—Maple Class Teacher
- Mrs Bayliss—Fir Class Teacher
- Mrs Tooker —Teaching Assistant
- Mrs Read—Teaching Assistant

PE

Wednesday—Maple Class

Wednesday—Fir Class

Please ensure that children have their full PE kit in school. As the weather gets cooler, you may want to send jogging bottoms and a sweatshirt for your child to wear during outdoor PE lessons.

Homework

In addition to **daily** reading, your child will be given a set of spellings words to learn each week. These will be tested in class.

After School Clubs

After school clubs will commence this week. You will have received a letter letting you know if your child is in a club for the next term. If your child is unable to attend the club please, can you inform the school office so that another child can attend in their place.

What do I already know?

I can explore the art from different artists.

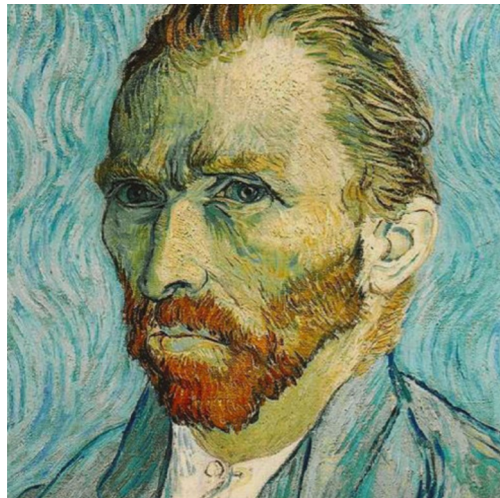
I can use different lines to create an image.

Vincent Van Gogh

Year One, Spring Term
Art

Our Big Questions:

How is nature depicted in art?



Key Vocabulary :

Thick, thin, soft, broad, narrow, fine, pattern, line, shape, detail, colour, hard, size, brush, bold, vibrant, abstract, dab, smooth,

During this journey we will learn:

- * To share my own thoughts about different pieces of art.
- * To explore how colours are created.
- * To use different brush strokes to create effect.



What do I already know?

I can recognise and discuss the Bible.

I can say why God is important to Christians.

I can share different events from the Bible.

Why do Christians pray?

Year One, Spring Term

Our Big Questions:

Why do Christians pray?

What difference does praying make?



Key Vocabulary :

Pray, prayer, God, amen, thank you, sorry, please, praise, forgiveness, assembly, collective worship, joy, love, generosity, discuss, difference,

During this journey we will learn:

- * To share my own thoughts and ideas about prayer.
- * To discuss what different prayers mean.

What do I know already?

- I can follow simple instructions.
- I can listen carefully to my friends.
- I can control my body.

Obstacle

Year One, Spring Term
Physical Education

Our Big Questions:

How can I gain greater control of ourselves and equipment?

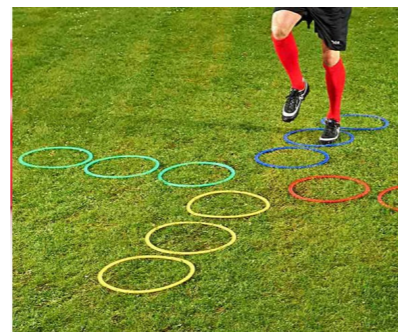


Key Vocabulary :

Travel, stillness, direction, space, beginning, middle, end, feelings, body, parts, levels, directions, pathways, speed, rhythm, push, take off, landing, evaluate, improve, fast, slow, safely, step,

During this journey we will learn:

- * To move my body in different ways.
- * To balance using different body parts.
- * To move my body safely.
- * To complete a simple obstacle course.



What do I already know?

- I can follow simple instructions.
- I can create my own instructions.
- I can program a toy.

E-Safety

Year One, Spring Term
Computing

Our Big Questions:

How can we use computers safely?

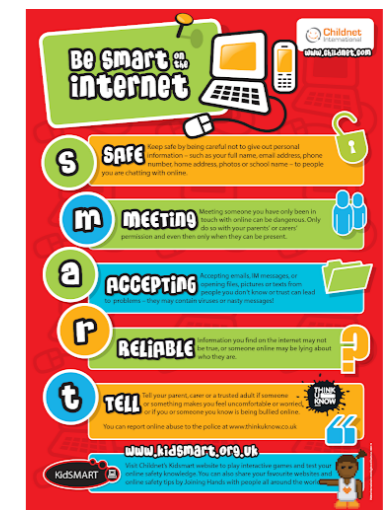
Key Vocabulary :

Internet, safety, log on, log off, program, save, search, engine, SMART, instructions, report,



During this journey we will learn:

- * To log on and off a computer safely.
- * To use the internet to find out new things.
- * To spot when something might not be safe on the internet.



What do I already know?

I can recognise healthy and unhealthy foods.

I can sort foods into healthy and unhealthy.

Puppets

Year One, Spring Term
DT

Our Big Questions:

How can we work with different materials effectively?



Key Vocabulary :

Functions, product, develop, create make, pattern, design, material, fabric, join, build, tool, construct, cotton, cut,

During this journey we will learn:

- * To explore existing products.
- * To share my thoughts about what I like and do not like.
- * To design functional products.
- * To use known techniques to create a product.



Who am I?

Year One, Spring Term
History and Geography

Our Big Questions:

How do people 'make' history?

The Queen



Key Vocabulary :

Queen, royal, palace, important, history, UK, locate, identify,

During this journey we will learn:

- * To learn facts about the Queen.
- * To share facts about the Queen.
- * To create a timeline of the Queens life.
- * To locate where I live.
- * To locate where the Queen lived.

What would we like to find out?