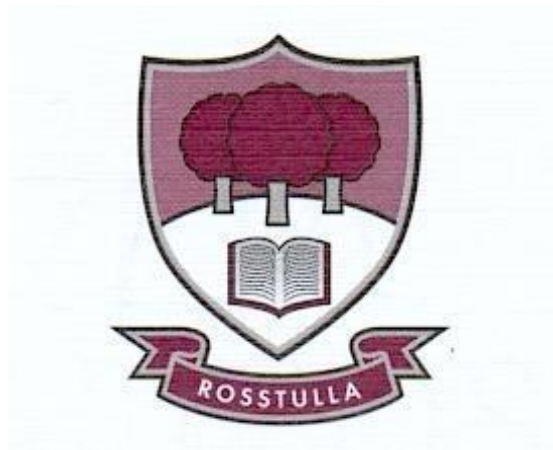


Rosstulla School



CHILD PROTECTION POLICY

Date Ratified by Board of Governors February 2023

Chairperson Signature:

CONTENTS

1. **Our School's Child Protection Ethos**
2. **Related Policies**
3. **The School's Safeguarding Team**
4. **Definitions of Harm**
5. **Responding to a Safeguarding Concern**
6. **Consent, Confidentiality, Information Sharing and Record Keeping**
7. **Safe Recruitment Procedures**
8. **Code of Conduct**
9. **The Preventative Curriculum**
10. **Monitoring and Evaluation**
11. **Appendices**
 - 11.1 **Appendix 1 Specific Types of Abuse (including Operation Encompass)**
 - 11.2 **Appendix 2 Children with Increased Vulnerabilities**
 - 11.3 **Appendix 3 How a Parent Can Make a Complaint**
 - 11.4 **Appendix 4 Procedure Where the School Has Concerns about Possible Abuse**
 - 11.5 **Appendix 5 Dealing with Allegations of Abuse against a Member of Staff**
 - 11.6 **Appendix 6 Note of Concern**
 - 11.7 **Appendix 7 Covid-19 Arrangements for Safeguarding and Child Protection**

1. CHILD PROTECTION ETHOS

We in Rosstulla have a responsibility for the safeguarding and child protection of the children in our care and we will carry out this duty by providing a caring, supportive and safe environment, where each child is valued for his or her unique talents and abilities, and in which all our young people can learn and develop to their full potential. All staff, teaching and non-teaching should be alert to the signs of possible abuse and should know the procedures to be followed. This policy sets out guidance on the action, which is required where abuse or harm to a child is suspected and outlines referral procedures within our school.

KEY PRINCIPLES OF SAFEGUARDING AND CHILD PROTECTION

The general principles, which underpin our work, are those set out in the UN Convention on the Rights of the Child and are enshrined in the Children (Northern Ireland) Order 1995, “Co-operating to safeguard children and young people in Northern Ireland” (DHSSPSNI, 2017), the Department of Education (Northern Ireland) guidance “Safeguarding and Child Protection in Schools” Circular 2017/04 (amended September 2019) and the SBNI Core Child Protection Policy and Procedures (2017).

The following principles form the basis of our Child Protection Policy:

- The child or young person’s welfare is paramount
- The voice of the child or young person should be heard
- Parents are supported to exercise parental responsibility and families helped stay together
- Partnership
- Prevention
- Responses should be proportionate to the circumstances
- Protection
- Evidence based and informed decision making

2. RELATED POLICIES

The school has a duty to ensure that safeguarding permeates all activities and functions. The child protection policy therefore complements and supports a range of other school policies including:

- Anti-Bullying Policy
- Attendance Policy
- Positive Behaviour Policy
- Code of Conduct
- Complaints policy
- Data protection Policy
- Educational Visits
- E-Safety Policy
- First Aid and Administration of Medicines
- Health and Safety Policy
- Intimate Care
- Relationships and Sexuality Education
- Special Educational Needs
- Use of Reasonable Force/Safe Handling
- Whistleblowing policy

These policies are available to parents and any parent wishing to have a copy should contact the School office or visit the school website www.Rosstulla.co.uk

3. SCHOOL SAFEGUARDING TEAM

The following are members of the school's Safeguarding Team:

- Chair of the Board of Governors (Dr Alan Preston)
- Designated Governor for Child Protection (Mrs Lynda Stewart)
- Principal (Miss Laura Matchett)
- Designated Teacher (Mrs Caroline McCarthy)
- Deputy Designated Teacher(s) (Mrs Suzanne Sloan & Mrs Fiona Jamison)

ROLES AND RESPONSIBILITIES

Board of Governors must ensure that:

- A Designated Governor for Child Protection is appointed.
- A Designated and Deputy Designated Teacher are appointed in their schools.
- They have a full understanding of the roles of the Designated and Deputy Designated Teachers for Child Protection.
- Safeguarding and child protection training is given to all staff and governors including refresher training.
- The school has a Child Protection Policy which is reviewed annually and parents and pupils receive a copy of the child protection policy and complaints procedure every two years.
- The school has an Anti-Bullying Policy which is reviewed at intervals of no more than four years and maintains a record of all incidents of bullying or alleged bullying. See the Addressing Bullying in Schools Act (NI) 2016.
- The school ensures that other safeguarding policies are reviewed at least every 3 years or as specified in relevant guidance
- There is a Code of Conduct for all adults working in the school.
- All school staff and volunteers are recruited and vetted, in line with DE Circular 2012/19.
- They receive a full annual report on all child protection matters. This report includes details of the preventative curriculum and any initiatives or awareness raising undertaken within the school, including training for staff.
- The school maintains the following child protection records in line with DE Circulars 2015/13 Dealing with Allegations of Abuse Against a Member of Staff and 2016/20 Child Protection: Record Keeping in Schools: Safeguarding and child protection concerns; disclosures of abuse; allegations against staff and actions taken to investigate and deal with outcomes; staff induction and training.

CHAIR OF BOARD OF GOVERNORS

The Chairperson of the B.o.G plays a pivotal role in creating and maintaining the safeguarding ethos within the school environment.

In the event of a safeguarding or child protection complaint being made against the Principal, it is the Chairperson who must assume lead responsibility for managing the complaint/allegation in keeping with guidance issued by the Department (and relevant guidance from other

Departments when it comes to other early years settings), employing authorities, and the school's own policies and procedures.

The Chairperson is responsible for ensuring child protection records are kept and for signing and dating annually the Record of Child Abuse Complaints against staff members even if there have been no entries.

DESIGNATED GOVERNOR FOR CHILD PROTECTION

The B.o.G delegates a specific member of the governing body to take the lead in safeguarding/child protection issues in order to advise the governors on: -

- The role of the designated teachers
- The content of child protection policies
- The content of a code of conduct for adults within the school
- The content of the termly updates and full Annual Designated Teachers Report
- Recruitment, selection, vetting and induction of staff.

DESIGNATED TEACHER/DEPUTY DESIGNATED TEACHER

Every school is required to appoint a Designated and Deputy Designated Teacher (DT and DDT) with responsibility for Child Protection. This role which involves:

- The induction and training of all school staff including support staff.
- Being available to discuss safeguarding or child protection concerns of any member of staff.
- Having responsibility for record keeping of all child protection concerns.
- Maintaining a current awareness of early intervention supports and other local services e.g.

Family Support

Hubs.

- Making referrals to Social Services or PSNI where appropriate.
- Liaison with the EA Designated Officers for Child Protection.
- Keeping the school Principal informed.
- Lead responsibility for the development of the school's child protection policy.
- Promotion of a safeguarding and child protection ethos in the school.
- Compiling written reports to the Board of Governors regarding child protection.

THE PRINCIPAL

As secretary to the Board of Governors the Principal will assist the B.o.G in fulfilling its safeguarding and child protection duties including:

- Ensuring the Board of Governors are kept fully informed of all developments relating to safeguarding including changes to legislation, policy, procedures, DE circulars, inclusion of Child Protection on the termly meeting agenda.
- Managing allegations/complaints against school staff.
- Establishing and manage the operational systems for safeguarding and child protection.
- Appointing and managing Designated /Deputy Designated Teachers who are enabled to fulfil their safeguarding responsibilities.
- Ensuring safe and effective recruitment and selection including awareness of safeguarding and child protection for new staff and volunteers.

- Ensuring that parents and pupils receive a copy or summary of the Child Protection policy at intake and at a minimum every 2 years.
- Maintaining the school's Record of Child Abuse Complaints

OTHER MEMBERS OF SCHOOL STAFF

- Members of staff **must** refer concerns or disclosures initially to the Designated Teacher for Child Protection or to the Deputy Designated Teacher if she is not available.
- Class teachers and Heads of Pastoral should complete the Note of Concern if there are safeguarding concerns such as: poor attendance and punctuality, poor presentation, changed or unusual behaviour including self-harm and suicidal thoughts, deterioration in educational progress, discussions with parents about concerns relating to their child, concerns about pupil abuse or serious bullying and concerns about home circumstances including disclosures of domestic abuse.
- Staff should not give children a guarantee of total confidentiality regarding their disclosures, should not investigate nor should they ask leading questions

SUPPORT STAFF

- If any member of the support staff has concerns about a child or staff member, they should report these concerns to the Designated Teacher or Deputy Designated Teacher if she is not available. A detailed written record of the concerns will be made and any further necessary action will be taken.

PARENTS

The primary responsibility for safeguarding and protection of children rests with parents who should feel confident about raising any concerns they have in relation to their child.

- Parents can play their part in safeguarding by informing the school.
- If the child has a medical condition or educational need.
- If there are any Court Orders relating to the safety or wellbeing of a parent or child.
- If there is any change in a child's circumstances for example - change of address, change of contact details, change of name, change of parental responsibility.
- If there are any changes to arrangements about who brings their child to and from school.
- If their child is absent and should send in a note on the child's return to school. This assures the school that the parent/carer knows about the absence. More information on parental responsibility can be found on the EA website at: www.eani.org.uk/schools/safeguarding-and-child-protection

It is essential that the school has up to date contact details for the parent/carer.

4. DEFINITIONS OF HARM

Definition of Harm

(Co-operating to Safeguard Children and young People in Northern Ireland August 2017)

Harm can be suffered by a child or young person by acts of abuse perpetrated upon them by others. Abuse can happen in any family, but children may be more at risk if their parents have problems with drugs, alcohol and mental health, or if they live in a home where domestic abuse happens. Abuse can also occur outside of the family environment. Evidence shows that babies and children with disabilities can be more vulnerable to suffering abuse.

Although the harm from the abuse might take a long time to be recognisable in the child or young person, professionals may be in a position to observe its indicators earlier, for example, in the way that a parent interacts with their child. Effective and ongoing information sharing is key between professionals.

Harm from abuse is not always straightforward to identify and a child or young person may experience more than one type of harm.

Harm can be caused by:

- Sexual abuse
- Emotional abuse
- Physical abuse
- Neglect
- Exploitation

SEXUAL ABUSE occurs when others use and exploit children sexually for their own gratification or gain or the gratification of others. Sexual abuse may involve physical contact, including assault by penetration (for example, rape, or oral sex) or non-penetrative acts such as masturbation, kissing, rubbing and touching outside clothing. It may include non-contact activities, such as involving children in the production of sexual images, forcing children to look at sexual images or watch sexual activities, encouraging children to behave in sexually inappropriate ways or grooming a child in preparation for abuse (including via e-technology). Sexual abuse is not solely perpetrated by adult males. Women can commit acts of sexual abuse, as can other children.

EMOTIONAL ABUSE is the persistent emotional maltreatment of a child. It is also sometimes called psychological abuse and it can have severe and persistent adverse effects on a child's emotional development.

Emotional abuse may involve deliberately telling a child that they are worthless, or unloved and inadequate. It may include not giving a child opportunities to express their views, deliberately silencing them, or 'making fun' of what they say or how they communicate. Emotional abuse may involve bullying – including online bullying through social networks, online games or mobile phones – by a child's peers.

PHYSICAL ABUSE is deliberately physically hurting a child. It might take a variety of different forms, including hitting, biting, pinching, shaking, throwing, poisoning, burning or scalding, drowning or suffocating a child.

NEGLECT is the failure to provide for a child's basic needs, whether it be adequate food, clothing, hygiene, supervision or shelter that is likely to result in the serious impairment of a

child's health or development. Children who are neglected often also suffer from other types of abuse.

EXPLOITATION is the intentional ill-treatment, manipulation or abuse of power and control over a child or young person; to take selfish or unfair advantage of a child or young person or situation, for personal gain. It may manifest itself in many forms such as child labour, slavery, servitude, and engagement in criminal activity, begging, benefit or other financial fraud or child trafficking. It extends to the recruitment, transportation, transfer, harbouring or receipt of children for the purpose of exploitation. Exploitation can be sexual in nature.

Although 'exploitation' is not included in the categories of registration for the Child Protection Register, professionals should recognise that the abuse resulting from or caused by the exploitation of children and young people can be categorised within the existing CPR categories as children who have been exploited will have suffered from physical abuse, neglect, emotional abuse, sexual abuse or a combination of these forms of abuse.

SPECIFIC TYPES OF ABUSE

In addition to the types of abuse described above there are also some specific types of abuse that we in Rosstulla are aware of and have therefore included them in our policy. Please see these in [Appendix 1](#)

CHILDREN WITH INCREASED VULNERABILITIES

Some children have increased risk of abuse due to specific vulnerabilities such as disability, lack of fluency in English and sexual orientation. We have included information about children with increased vulnerabilities in our policy. Please see these in [Appendix 2](#)

5. RESPONDING TO A SAFEGUARDING CONCERN

Safeguarding is more than child protection. Safeguarding begins with promotion and preventative activity which enables children and young people to grow up safely and securely in circumstances where their development and wellbeing is not adversely affected. It includes support to families and early intervention to meet the needs of children and continues through to child protection. Child protection refers specifically to the activity that is undertaken to protect individual children or young people who are suffering, or are likely to suffer significant harm¹.

HOW A PARENT CAN RAISE A CONCERN

In Rosstulla, we aim to work closely with parents/carers in supporting all aspects of their child's development and well-being. Any concerns a parent/carer may have will be taken seriously and dealt with in a professional manner.

¹ Co-Operating to Safeguard Children and Young People in Northern Ireland (March 2016)
<https://www.health-ni.gov.uk/publications/co-operating-safeguard-children-and-young-people-northern-ireland>

If a parent/carer has a concern they can talk to the Class Teacher, Primary/Secondary Head of Pastoral Care, the Designated or Deputy Designated Teacher for child protection or the Principal.

If they are still concerned they may talk to the Chair of the Board of Governors. If after this a parent still has concerns they can contact the NI Public Services Ombudsman. At any time, a parent may talk to a social worker in the local Gateway team or to the PSNI Central Referral Unit. Details of who to contact are shown in the flowchart in [Appendix 3](#)

WHERE SCHOOL HAS CONCERNS OR HAS BEEN GIVEN INFORMATION ABOUT POSSIBLE ABUSE BY SOMEONE OTHER THAN A MEMBER OF STAFF

In Rosstulla, if a child makes a disclosure to a teacher or other member of staff which gives rise to concerns about possible abuse, or if a member of staff has concerns about a child, the member of staff will complete a Note of Concern (see [Appendix 6](#)) and act promptly. **They will not investigate** - this is a matter for Social Services - but will discuss these concerns with the Designated Teacher or with the Deputy Designated Teacher if she is not available.

The Designated Teacher will consult with the Principal or other relevant staff always taking care to avoid due delay. {If Principal is not available, Designated Teacher or Deputy Designated Teacher will consult directly with an EA CPSS Officer. If required, advice may be sought from the Education Authority Designated Officer for Child Protection. The Designated Teacher may also seek clarification from the child or young person, their parent/carer.

If a child protection referral is not required the school may consider other options including monitoring, signposting or referring to other support agencies e.g. Family Support Hub with parental consent and, where appropriate, with the child/young person's consent.

If a child protection referral is required the Designated Teacher will seek consent from the parent/carer and/or the child (if they are competent to give this), unless this would place the child at risk of significant harm.

The Designated Teacher will phone the Gateway team and/or the PSNI and will submit a completed UNOCINI referral form.

Where appropriate, the source of the concern will be informed of the action taken.

For further detail please see [Appendix 4](#)

WHERE A COMPLAINT HAS BEEN MADE ABOUT POSSIBLE ABUSE BY A MEMBER OF THE SCHOOL'S STAFF OR A VOLUNTEER

When a complaint about possible child abuse is made against a member of staff the Principal (or the Designated Teacher if the Principal is not available) must be informed immediately. If the complaint is against the Principal, then the Designated Teacher should be informed and she will inform the Chairperson of the Board of Governors who will consider what action is required in consultation with the employing authority. The procedure as outlined in [Appendix 5](#) will be followed.

6. CONSENT

Prior to making a referral to Social Services the consent of the parent/carers and/or the young person (if they are competent to give this) will normally be sought. The exception to this is where to seek such consent would put that child, young person or others at increased risk of significant harm or an adult at risk of serious harm, or it would undermine the prevention, detection or prosecution of a serious crime including where seeking consent might lead to interference with any potential investigation.

In circumstances where the consent of the parent/carer and/or the young person has been sought and is withheld we will consider and where possible respect their wishes. However, our primary consideration must be the safety and welfare of the child and we will make a referral in cases where consent is withheld if we believe on the basis of the information available that it is in the best interests of the child/young person to do so.

CONFIDENTIALITY AND INFORMATION SHARING

Information given to members of staff about possible child abuse cannot be held “in confidence”. In the interests of the child, staff have a responsibility to share relevant information about the protection of children with other professionals particularly the investigative agencies. In keeping with the principle of confidentiality, the sharing of information with school staff will be on a ‘need to know’ basis.

Where there have been, or are current, child protection concerns about a pupil who transfers to another school we will consider what information should be shared with the Designated Teacher in the receiving school.

Where it is necessary to safeguard children, information will be shared with other statutory agencies in accordance with the requirements of this policy, the school data protection policy and the General Data Protection Regulations (GDPR)

RECORD KEEPING

In accordance with DE guidance we must consider and develop clear guidelines for the recording, storage, retention and destruction of both manual and electronic records where they relate to child protection concerns.

In order to meet these requirements all child protection records, information and confidential notes concerning pupils in Rosstulla are stored securely and only the Designated Teacher/Deputy Designated Teacher and Principal have access to them. In accordance with DE guidance on the disposal of child protection records these records will be stored from child’s date of birth plus 30 years.

If information is held electronically, whether on a PC, a laptop or on a portable memory device, all must be encrypted and appropriately password protected.

These notes or records should be factual, objective and include what was seen, said, heard or reported. They should include details of the place and time and who was present and should be given to the Designated/Deputy Designated Teacher. The person who reports the incident must treat the matter in confidence.

7. SAFE RECRUITMENT PROCEDURES

Vetting checks are a key preventative measure in preventing unsuitable individuals' access to children and vulnerable adults through the education system and schools must ensure that all persons on school property are vetted, inducted and supervised as appropriate. All staff paid or unpaid who are appointed to positions in Rosstulla are vetted/supervised in accordance with relevant legislation and Departmental guidance.

8. CODE OF CONDUCT FOR ALL STAFF - PAID OR UNPAID

All actions concerning children and young people must uphold the best interests of the young person as a primary consideration. Staff must always be mindful of the fact that they hold a position of trust and that their behaviour towards the child and young people in their charge must be above reproach. All members of staff are expected to comply with the school's Code of Conduct for Employees and Volunteers which has been approved by the Board of Governors (Rosstulla's Code of Conduct for Staff policy available on request).

9. THE PREVENTATIVE CURRICULUM

The statutory personal development curriculum requires schools to give specific attention to pupils' emotional wellbeing, health and safety, relationships, and the development of a moral thinking and value system. The curriculum also offers a medium to explore sensitive issues with children and young people in an age-appropriate way which helps them to develop appropriate protective behaviours. (2017/04).

Rosstulla seeks to promote pupils' awareness and understanding of safeguarding issues, including those related to child protection through its curriculum. The safeguarding of children is an important focus in the school's personal development programme and is also addressed where it arises within the context of subjects. Through the preventative curriculum we aim to build the confidence, self-esteem and personal resiliencies of children so that they can develop coping strategies and can make more positive choices in a range of situations.

Throughout the school year child protection issues are addressed through class assemblies and there is a permanent child protection notice board in the main corridor and relevant information in each resource area, which provides advice and displays child helpline numbers. Other initiatives which address child protection and safety issues: School visitors e.g. fire fighters, police etc. health visitor parent programmes.

10. MONITORING AND EVALUATION

This policy will be reviewed annually by the Safeguarding Team and approved by the Board of Governors for dissemination to parents, pupils and staff. It will be implemented through the school's staff induction and training programme and as part of day to day practice. Compliance with the policy will be monitored on an on-going basis by the Designated Teacher for Child Protection and periodically by the Schools Safeguarding Team. The Board of Governors will also monitor child protection activity and the implementation of the Safeguarding and Child Protection policy on a regular basis through the provision of reports from the Designated Teacher.

Date	Policy	
Reviewed:		
Signed:		Designated Teacher
Signed:		Principal
Signed:		Chair of Board of Governors

SPECIFIC TYPES OF ABUSE

GROOMING of a child or young person is always abusive and/or exploitative. It often involves perpetrator(s) gaining the trust of the child or young person or, in some cases, the trust of the family, friends or community, and/or making an emotional connection with the victim in order to facilitate abuse before the abuse begins. This may involve providing money, gifts, drugs and/or alcohol or more basic needs such as food, accommodation or clothing to develop the child's/young person's loyalty to and dependence upon the person(s) doing the grooming. The person(s) carrying out the abuse may differ from those involved in grooming which led to it, although this is not always the case. Grooming is often associated with Child Sexual Exploitation (CSE) but can be a precursor to other forms of abuse. Grooming may occur face to face, online and/or through social media, the latter making it more difficult to detect and identify.

If the staff in Rosstulla become aware of signs that may indicate grooming they will take early action and follow the school's child protection policies and procedures.

Child sexual exploitation (CSE) is a form of child sexual abuse. It occurs where an individual or group takes advantage of an imbalance of power to coerce, manipulate or deceive a child or young person under the age of 18 into sexual activity (a) in exchange for something the victim needs or wants, and/ or (b) for the financial advantage or increased status of the perpetrator or facilitator. The victim may have been sexually exploited even if the sexual activity appears consensual. Child sexual exploitation does not always involve physical contact; it can also occur through the use of technology. (Co-operating to Safeguard Children and Young People in NI. DHSSPS version 2.0 2017).

The key factor that distinguishes cases of CSE from other forms of child sexual abuse is the concept of exchange – the fact that someone coerces or manipulates a child into engaging in sexual activity **in return for something** they need or desire and/or for the gain of those perpetrating or facilitating the abuse. The something received by the child or young person can include both tangible items and/or more intangible 'rewards' OR 'benefits' such as perceived affection, protection or a sense of value or belonging.

Any child under the age of eighteen, male or female, can be a victim of CSE, including those who can legally consent to have sex. The abuse most frequently impacts upon those of a post-primary age and can be perpetrated by adults or peers, on an individual or group basis.

CSE is a form of child abuse and, as such, any member of staff suspecting that CSE is occurring will follow the school's child protection policy and procedures, including reporting to the appropriate agencies.

DOMESTIC AND SEXUAL VIOLENCE AND ABUSE can have a profoundly negative effect on a child's emotional, psychological and social well-being. A child does not have to witness domestic violence to be adversely affected by it. Living in a violent or abusive domestic environment is harmful to children.

Domestic violence and abuse is defined as 'threatening, controlling, coercive behaviour, violence or abuse (psychological, virtual, physical, verbal, sexual, financial or emotional) inflicted on anyone (irrespective of age, ethnicity, religion, gender, identity, sexual orientation or any form of disability) by a current or former intimate partner or family member.' Sexual Violence and Abuse is defined as 'any behaviour (physical, psychological, verbal, virtual /online perceived to be of a

sexual nature which is controlling, coercive, exploitative, harmful or unwanted that is inflicted on anyone (irrespective of age, ethnicity, religion, gender, gender identity, sexual orientation or any form of disability).’ (Stopping Domestic and Sexual Violence and Abuse in Northern Ireland A Seven Year Strategy: March 2016).

Operation Encompass

We are an Operation Encompass school. Operation Encompass is an early intervention partnership between local Police and our school, aimed at supporting children who are victims of domestic violence and abuse. As a school, we recognise that children’s exposure to domestic violence is a traumatic event for them.

Children experiencing domestic abuse are negatively impacted by this exposure. Domestic abuse has been identified as an Adverse Childhood Experience and can lead to emotional, physical and psychological harm. Operation Encompass aims to mitigate this harm by enabling the provision of immediate support. This rapid provision of support within the school environment means children are better safeguarded against the short, medium and long-term effects of domestic abuse.

As an Operation Encompass school, when the police have attended a domestic incident and one of our pupils is present, they will make contact with the school at the start of the next working day to share this information with a member of the school safeguarding team. This will allow the school safeguarding team to provide immediate emotional support to this child as well as giving the designated teacher greater insight into any wider safeguarding concerns.

This information will be treated in strict confidence, like any other category of child protection information. It will be processed as per DE Circular 2020/07 ‘Child Protection Record Keeping in Schools’ and a note will be made in the child’s child protection file. The information received on an Operation Encompass call from the Police will only be shared outside of the safeguarding team on a proportionate and need to know basis. All members of the safeguarding team will complete online Operation Encompass training, so they are able to take these calls. Any staff responsible for answering the phone at school will be made aware of Operation Encompass and the need to pass these calls on with urgency to a member of the Safeguarding team.

Further information see [The Domestic Abuse Information Sharing with Schools etc. Regulations \(Northern Ireland\) 2022](#).

If it comes to the attention of school staff that Domestic Abuse, is or may be, affecting a child this will be passed on to the Designated/Deputy Designated Teacher who has an obligation to share the information with the Social Services Gateway Team.

FEMALE GENITAL MUTILATION (FGM) is a form of child abuse and violence against women and girls. FGM comprises all procedures that involve partial or total removal of the external female genitalia, or other injury to the female genital organs for non-medical reasons. The procedure is also referred to as ‘cutting’, ‘female circumcision’ and ‘initiation’. The practice is medically unnecessary, extremely painful and has serious health consequences, both at the time when the mutilation is carried out and in later life. FGM is a form of child abuse and, as such, teachers have a statutory duty to report cases, including suspicion, to the appropriate agencies, through agreed established procedures set out in our school policy.

FORCED MARRIAGE A forced marriage is a marriage conducted without the valid consent of one or both parties and where duress is a factor. Duress can include physical, psychological, financial, sexual and emotional pressure. Forced marriage is a criminal offence in Northern Ireland and if in Rosstulla we have knowledge or suspicion of a forced marriage in relation to a child or young person we will contact the PSNI immediately.

CHILDREN WHO DISPLAY HARMFUL SEXUALISED BEHAVIOUR

Learning about sex and sexual behaviour is a normal part of a child's development. It will help them as they grow up, and as they start to make decisions about relationships. As a school we support children and young people, through the Personal Development element of the curriculum, to develop their understanding of relationships and sexuality and the responsibilities of healthy relationships. Teachers are often therefore in a good position to consider if behaviour is within the normal continuum or otherwise.

It is important to distinguish between different sexual behaviours - these can be defined as 'healthy', 'problematic' or 'sexually harmful'. Healthy sexual behaviour will normally have no need for intervention, however consideration may be required as to appropriateness within a school setting. Problematic sexual behaviour requires some level of intervention, depending on the activity and level of concern. For example, a one-off incident may simply require liaising with parents on setting clear direction that the behaviour is unacceptable, explaining boundaries and providing information and education. Alternatively, if the behaviour is considered to be more serious, perhaps because there are a number of aspects of concern, advice from the EA CPSS may be required. We will also take guidance from DE Circular 2016/05 to address concerns about harmful sexualised behaviour displayed by children and young people.

WHAT IS HARMFUL SEXUALISED BEHAVIOUR?

Harmful sexualised behaviour is any behaviour of a sexual nature that takes place when:

- There is no informed consent by the victim; and/or
- The perpetrator uses threat (verbal, physical or emotional) to coerce, threaten or intimidate the victim
- Harmful sexualised behaviour can include: Using age inappropriate sexually explicit words and phrases.
- Inappropriate touching.
- Using sexual violence or threats.
- Sexual behaviour between children is also considered harmful if one of the children is much older - particularly if there is more than two years' difference in age or if one of the children is pre-pubescent and the other is not.
- However, a younger child can abuse an older child, particularly if they have power over them - for example, if the older child is disabled.

Sexually harmful behaviour is primarily a child protection concern. There may remain issues to be addressed through the school's positive behaviour policy but it is important to always apply principles that remain child centred.

Harmful sexualised behaviour will always require intervention and we will follow the procedures in the child protection policy and, seek support from the EA CPSS.

E SAFETY/INTERNET ABUSE

Online safety means acting and staying safe when using digital technologies. It is wider than simply internet technology and includes electronic communication via text messages, social environments and apps, and using games consoles through any digital device. In all cases, in schools and elsewhere, it is a paramount concern.

In January 2014, the SBNI published its report 'An exploration of e-safety messages to young people, parents and practitioners in Northern Ireland' which identified the associated risks around online safety under four categories:

- **Content Risks:** the child or young person is exposed to harmful material.
- **Contact risks:** the child or young person participates in adult initiated online activity.
- **Conduct Risks:** the child or young person is a perpetrator or victim in peer-to-peer exchange.
- **Commercial Risks:** the child or young person is exposed to inappropriate commercial advertising, marketing schemes or hidden costs.

We in Rosstulla, have a responsibility to ensure that there is a reduced risk of pupils accessing harmful and inappropriate digital content and will be energetic in teaching pupils how to act responsibly and keep themselves safe. As a result, pupils should have a clear understanding of online safety issues and, individually, be able to demonstrate what a positive digital footprint might look like.

The school's actions and governance of online safety are reflected clearly in our safeguarding arrangements. Safeguarding and promoting pupils' welfare around digital technology is the responsibility of everyone who comes into contact with the pupils in the school or on school-organised activities.

SEXTING is the sending or posting of sexually suggestive images, including nude or semi-nude photographs, via mobile or over the internet. There are two aspects to Sexting:

1. SEXTING BETWEEN INDIVIDUALS IN A RELATIONSHIP

Pupils need to be aware that it is illegal, under the Sexual Offences (NI) Order 2008, to take, possess or share 'indecent images' of anyone under 18 even if they are the person in the picture (or even if they are aged 16+ and in a consensual relationship) and in these cases we will contact local police on 101 for advice and guidance. We may also seek advice from the EA Child Protection Support Service.

Please be aware that, while offences may technically have been committed by the child/children involved, the matter will be dealt with sensitively and considering all of the circumstances and it is not necessarily the case that they will end up with a criminal record. It is important that particular care is taken in dealing with any such cases. Adopting scare tactics may discourage a young person from seeking help if they feel entrapped by the misuse of a sexual image.

2.SHARING AN INAPPROPRIATE IMAGE WITH AN INTENT TO CAUSE DISTRESS

If a pupil has been affected by inappropriate images or links on the internet it is important that it is **not forwarded to anyone else**. Schools are not required to investigate incidents. It is an offence under the Criminal Justice and Courts Act 2015 (www.legislation.gov.uk/ukpga/2015/2/section/33/enacted) to share an inappropriate image of another person without the individual's consent.

If a young person has shared an inappropriate image of themselves that is now being shared further whether or not it is intended to cause distress, the child protection procedures of the school will be followed.

SIGNS AND SYMPTOMS OF ABUSE

Please find attached the link to signs and symptoms from the SBNI Regional Core Policies and Procedures guidance.

<https://proceduresonline.com/trixcms/media/1248/signs-and-symptoms-of-child-abuse-and-neglect.pdf>

CHILDREN WITH INCREASED VULNERABILITIES**● CHILDREN WITH A DISABILITY**

Children and young people with disabilities (i.e. any child or young person who has a physical, sensory or learning impairment or a significant health condition) may be more vulnerable to abuse and those working with children with disabilities should be aware of any vulnerability factors associated with risk of harm, and any emerging child protection issues.

Staff must be aware that communication difficulties can be hidden or overlooked making disclosure particularly difficult. Staff and volunteers working with children with disabilities will receive training to enable them to identify and refer concerns early in order to allow preventative action to be taken.

● CHILDREN WITH LIMITED FLUENCY IN ENGLISH

As with children with a special educational need, children who are not fluent in English should be given the chance to express themselves to a member of staff or other professional with appropriate language/communication skills, especially where there are concerns that abuse may have occurred.

Designated Teachers should work with their SEN co-ordinators along with school staff with responsibility for newcomer pupils, seeking advice from the EA's Inclusion and Diversity Service to identify and respond to any particular communication needs that a child may have. All schools should try to create an atmosphere in which pupils with special educational needs which involve communication difficulties, or pupils for whom English is not their first language, feel confident to discuss these issues or other matters that may be worrying them.

● PRE-SCHOOL PROVISION

Many of the issues in the preceding paragraphs will be relevant to our young children who may have limited communication skills. In addition to the above, staff will follow our Intimate Care policy and procedures in consultation with the child's parent[s]/carer[s].

● LOOKED AFTER CHILDREN

In consultation with other agencies and professionals, a Health and Social Care Trust may determine that a child or young person's welfare cannot be safeguarded if they remain at home. In these circumstances, a child may be accommodated through a voluntary arrangement with the persons with parental responsibility for the child or the HSCT may make an application to the Court for a Care Order to place the child or young person in an alternative placement provided by the Trust. The HSCT will then make arrangements for the child to be looked after, either permanently or temporarily. It is important that the views of children, young people and their parents and/or others with parental responsibility for the looked child are taken into account when decisions are made.

A member of school staff will attend LAC meetings and will provide a written report. Where necessary, school support will be put in place for the child/young person. Information will be shared with relevant staff on a need to know basis.

● CHILDREN/YOUNG PEOPLE WHO GO MISSING

Children and young people who go missing come from all backgrounds and communities and are known to be at greater risk of harm. This includes risks of being sexually abused or exploited although children and young people may also become homeless or a victim or perpetrator of crime. Those who go missing from their family home may have no involvement with services as not all children and young people who run away or go missing from their family home have underlying issues within the family, or are reported to the police as missing.

The patterns of going missing may include overnight absences or those who have infrequent unauthorised absences of short time duration. When a child or young person returns, having been missing for a period, we should be alert to the possibility that they may have been harmed and to any behaviours or relationships or other indicators that children and young people may have been abused.

School staff will work in partnership with those who look after the child or young person who goes missing and, if appropriate, will complete a risk assessment. Current school policies will apply e.g. attendance, safeguarding, relationships and sexuality education.

- **YOUNG PEOPLE IN SUPPORTED ACCOMMODATION**

Staff will work in partnership with those agencies involved with young people leaving care and those living in supported accommodation and will provide pastoral support as necessary.

- **YOUNG PEOPLE WHO ARE HOMELESS**

If we become aware that a young person in our school is homeless we will share this information with Social Services whose role is to carry out a comprehensive needs and risk assessment. We will contribute to the assessment and attend multi-disciplinary meetings.

- **SEPARATED, UNACCOMPANIED AND TRAFFICKED CHILDREN AND YOUNG PEOPLE**

SEPARATED CHILDREN and young people are those who have been separated from their parents, or from their previous legal or customary primary caregiver. **UNACCOMPANIED CHILDREN** and young people are those seeking asylum without the presence of a legal guardian. Consideration must be given to the fact that separated or unaccompanied children may be a victim of human trafficking.

CHILD TRAFFICKING is the recruitment, transportation, transfer, harbouring or receipt of a child or young person, whether by force or not, by a third person or group, for the purpose of different types of exploitation.

If we become aware of a child or young person who may be separated, unaccompanied or a victim of human trafficking we in School Name will immediately follow our safeguarding and child protection procedures.

- **CHILDREN OF PARENTS WITH ADDITIONAL SUPPORT NEEDS**

Children and young people can be affected by the disability of those caring for them. Parents, carers or siblings with disabilities may have additional support needs which impact on the safety and wellbeing of children and young people in the family, possibly affecting their education or physical and emotional development. It is important that any action school staff take to safeguard children and young people at risk of harm in these circumstances encompasses joint working between specialist disability and children's social workers and other professionals and agencies

involved in providing services to adult family members. This will assist us in ensuring the welfare of the children and young people in the family is promoted and they are safeguarded as effectively as possible.

Where it is known or suspected that parents or carers have impaired ability to care for a child, the safeguarding team will give consideration to the need for a child protection response in addition to the provision of family support and intervention.

- **GENDER IDENTITY ISSUES AND SEXUAL ORIENTATION**

Young people from the LGBTQ+ community may face particular difficulties which could make them more vulnerable to harm. These difficulties could range from intolerance and homophobic bullying from others to difficulties for the young person themselves in exploring and understanding their sexuality. At such times young people may be more vulnerable to predatory advances from adults seeking to exploit or abuse them. This could impede a young person's ability or willingness to raise concerns if they feel they are at risk or leave young people exposed to contact with people who would exploit them.

As a staff working with young people from the LGBTQ+ community we will support them to appropriately access information and support on healthy relationships and to report any concerns or risks of abuse or exploitation.

- **WORK EXPERIENCE, SCHOOL TRIPS AND EDUCATIONAL VISITS**

Our duty to safeguard and promote the welfare of children and young people also includes periods when they are in our care outside of the school setting. We will follow DE guidance on educational visits, school trips and work experience to ensure our current safeguarding policies are adhered to and that appropriate staffing levels are in place.

CHILDREN/YOUNG PEOPLE'S BEHAVIOURS

- **PEER ABUSE**

Children and young people may be at risk of physical, sexual and emotional bullying and abuse by their peers. Such abuse should always be taken as seriously as abuse perpetrated by an adult. Where a child or young person has been harmed by another, all school staff should be aware of their responsibilities in relation to both children and young people who perpetrate the abuse as well as those who are victims of it and, where necessary, should contribute to an inter-disciplinary and multi-agency response.

- **SELF-HARM**

Self-harm encompasses a wide range of behaviours and things that people do to themselves in a deliberate and usually hidden way, which are damaging. It may indicate a temporary period of emotional pain or distress, or deeper mental health issues which may result in the development of a progressive pattern of worsening self-harm that may ultimately result in death by misadventure

or suicide. Self-harm may involve abuse of substances such as alcohol or drugs, including both illegal and/or prescribed drugs.

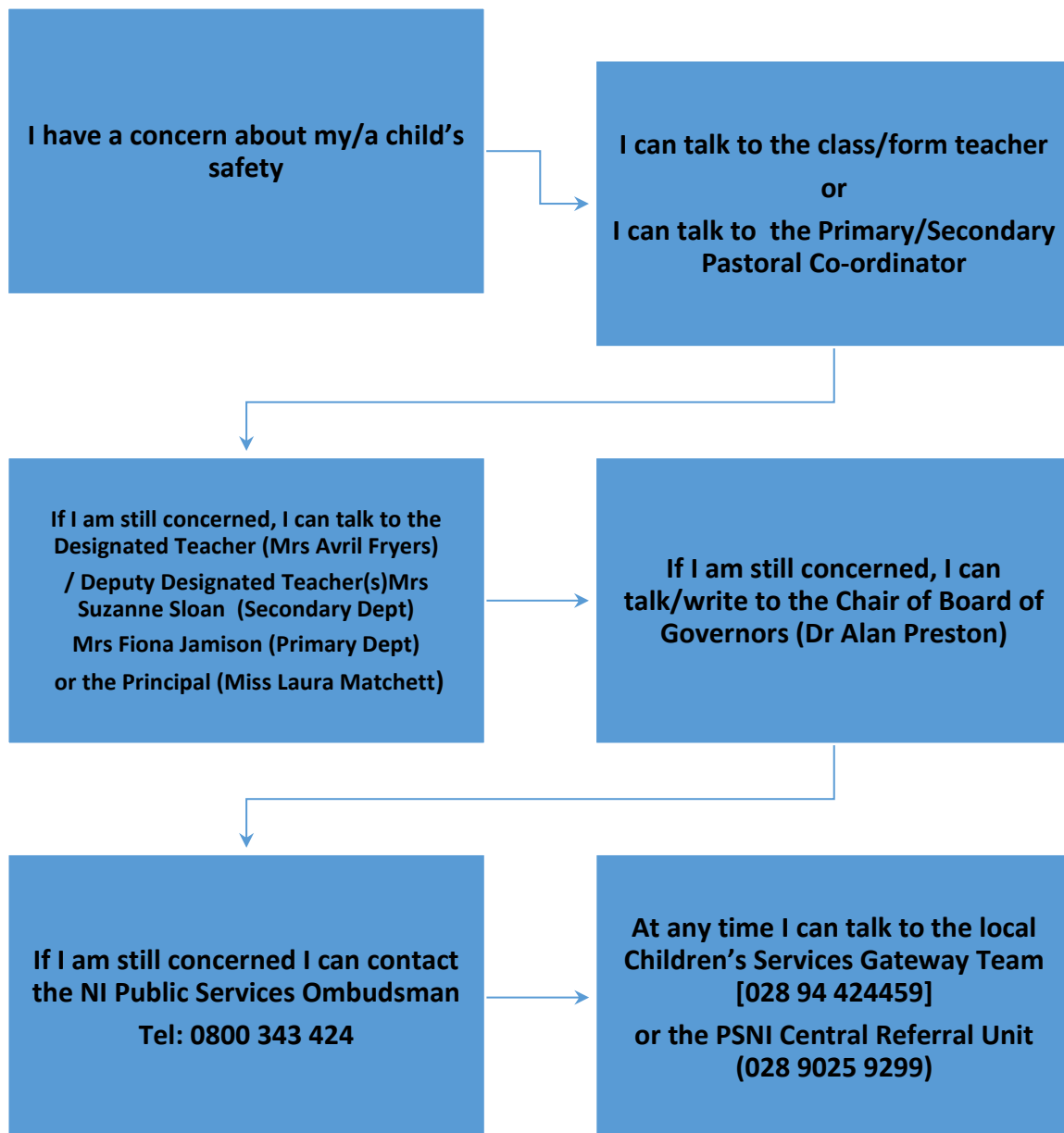
Self-harming behaviours may indicate that a child or young person has suffered abuse; however, this is not always the case. School staff should share concerns about a child or young person who is self-harming with a member of the safeguarding team who will seek advice from appropriately qualified and experienced professionals including those in the non-statutory sector to make informed assessments of risk in relation to self-harming behaviours.

- **SUICIDAL IDEATION**

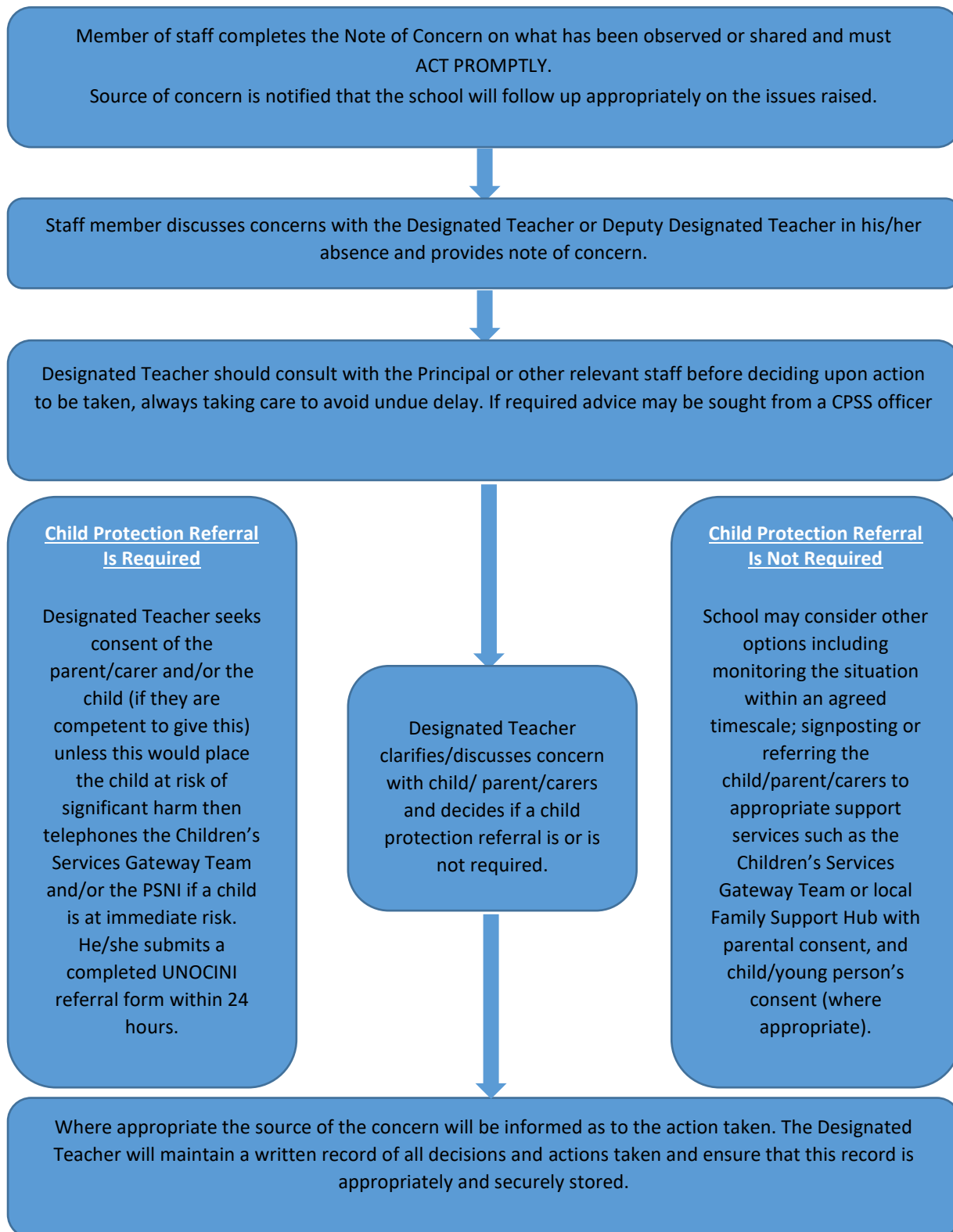
Staff must act without delay if they have concerns about a child or young person who presents as being suicidal as it is important that children and young people who communicate thoughts of suicide or engage in para-suicidal behaviours are seen urgently by an appropriately qualified and experienced professional, including those in the non-statutory sector, to ensure they are taken seriously, treated with empathy, kindness and understanding and informed assessments of risk and needs can be completed as a matter of priority.

HOW A PARENT CAN MAKE A COMPLAINT

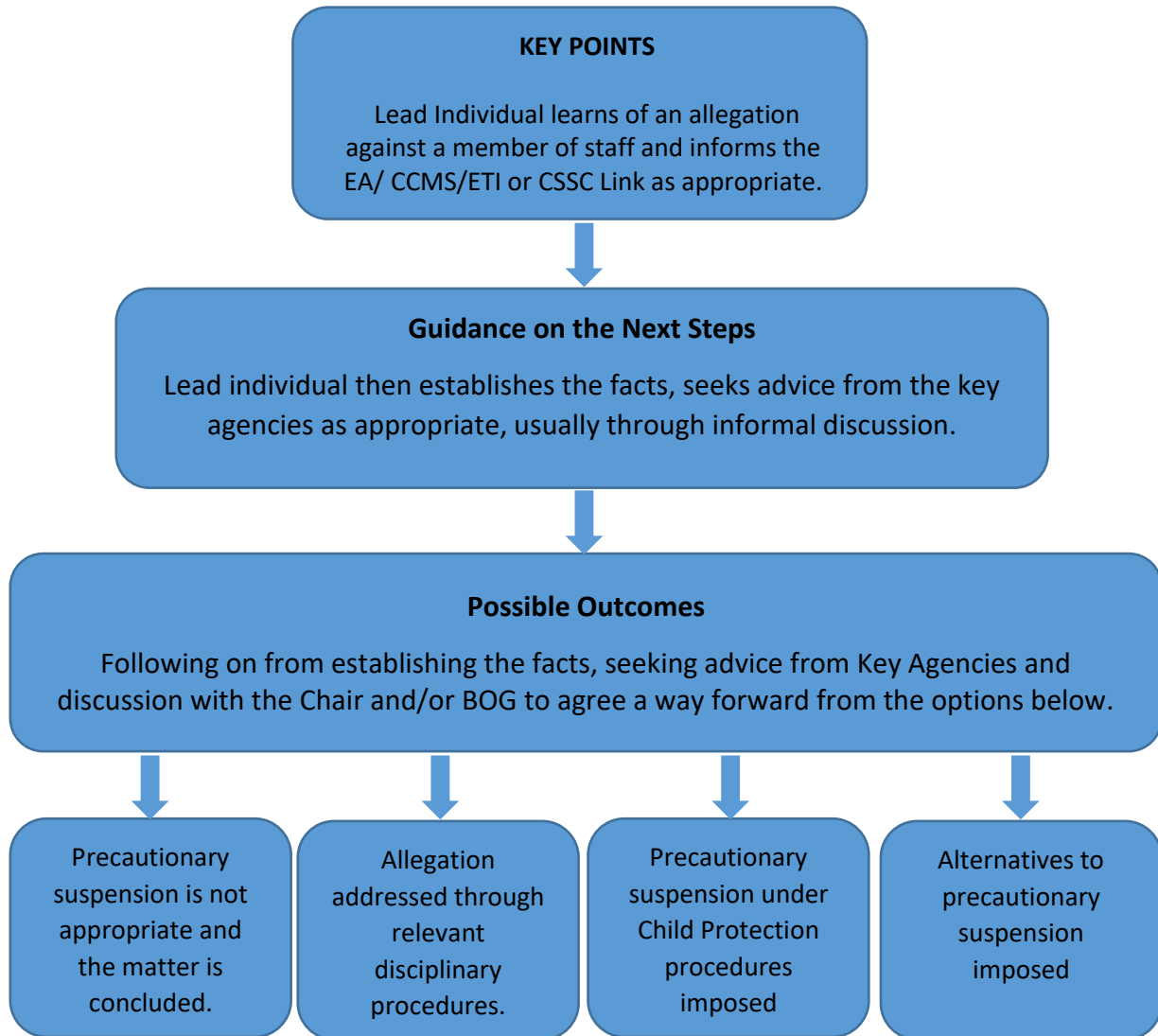
If a Parent has a Potential Child Protection Concern:



Procedure Where the School Has Concerns, Or Has Been Given Information, About Possible Abuse By Someone Other Than A Member Of Staff



DEALING WITH ALLEGATIONS OF ABUSE AGAINST A MEMBER OF STAFF



CONFIDENTIAL
NOTE OF CONCERN
CHILD PROTECTION RECORD - REPORTS TO DESIGNATED TEACHER

Student name(s)	Year Group(s)
Date, time of incident / disclosure:	
Circumstances of incident/disclosure:	
Nature & description of concern:	
Parties involved, including any witness(es) to an event / what was said or done and by whom:	
Action taken at the time:	
Details of any advice sought, for whom and when:	
Any further action taken:	
Written report passed to Designated Teacher: YES NO <i>(please circle your answer)</i> If "No", state reason:	

Date and time of report to Designated Teacher:

Written note from staff member placed on student's Child Protection file <i>(please circle)</i>	YES	NO
--	-----	----

Name of staff member making the report: _____

Signature of staff member: _____ Date: _____

Signature of Designated Teacher: _____ Date: _____

Additional report attached (please tick)

COVID ARRANGEMENTS FOR SAFEGUARDING AND CHILD PROTECTION

1. CONTEXT

From 20 March 2020 parents were asked to keep their children at home, wherever possible, and for schools to remain open only for those children of key workers and children who are vulnerable.

The current national health concerns relating to Covid-19 creates uncertainty in the lives of children and young people. Daily routines, family life, friendship groups and the safe space that schools provide have been disrupted. For many children, the need to spend most of their day at home will bring an additional challenge, and for some this will be an additional safeguarding risk factor. It is important that the adults responsible for safeguarding children are sensitive to their physical, social and emotional needs in these most unusual circumstances. It is critically important that children who are or may be at risk are identified so that a proportionate, compassionate and sensitive response can be taken.

2. PROCEDURES

Staff will continue to follow the procedures outlined in our school's Child Protection Policy which is available on our school website.

In addition, the following arrangements have been put in place to support families and monitor pupil safety:

- The school email address, teachers' email addresses, main school phone number are available to all parents. Parents/Carers can also contact form teachers directly via Seesaw.
- Teachers provide online learning via the school website/ C2k platform with strict procedures in place to minimise risk.
- The website provides parents with a range of resources and links to additional online learning, support and guidance.
- We would remind everyone to stay safe when using online resources and to report any concerns to a member of the safeguarding team.
- The School Counsellor (ICSS) remains available for phone consultation and parents are made aware of this via the website.
- In line with the information previously provided to schools by the EA CPSS, teachers may make phone calls to parents. These will be pastoral in nature and a record will be kept of any issues reported by parents. Any concerns around pupil well-being will be shared without delay with a member of the Safeguarding team.
- If a member of staff is using their personal telephone their number will be withheld to ensure the protection of private information of staff

3. ONLINE SAFETY

In order to ensure the safety of all involved the following guidance should be followed if staff and pupils are engaging in online teaching/communication using video conferencing or platforms recommended by and available via C2K

- Teachers and pupils need to be fully dressed and should not wear pyjamas/sleep wear during the session.
- Students cannot participate from a bedroom.
- The teacher arranges the session and password and shares this only with pupils
- Pupils must agree not to share the password with anyone else.

- Parental consent will be sought before their child attends online sessions.
- A disclosure or concern over any online forum will be followed up as it would be in school.
- Online sessions should be time limited for the benefit of both children and teachers.

If there is a breach to any of these procedures e.g. pupil gives the password to someone else who joins the group, the teacher should immediately terminate the session and advise the Principal.

4. HOW A PARENT CAN RAISE AN ISSUE OR EXPRESS A CONCERN

We would welcome parents asking for advice and help if they have concerns about their child's well-being or safety. Asking for help is a protective factor and parental concerns and requests for help will always be taken seriously.

Any member of staff will listen carefully to parental concerns and ensure that the request for help, if necessary, is brought to the attention of a member of the safeguarding team. In this case a decision can be made as to how best to provide help.

5. IF SCHOOL IS OPEN DURING COVID-19 CLOSURES

If school is open for vulnerable pupils and key workers' children, the school should adhere to the EA guidance (link to guidance for school clusters to be added).

We will follow current Department of Education and Department of Health guidelines regarding social distancing, hygiene and personal protective equipment to ensure the safety of both pupils and staff.

6. HOW A CHILD CAN RAISE A CONCERN

We know that while many children will be enjoying their time at home and remain almost unaffected by this unusual situation, there will be others who feel scared, lonely and even those who miss school. Our safeguarding responsibility to all our children continues and we will seek to maintain contact with our children and young people as well as signpost them to other agencies.

We will use the following means to connect with our children and young people:

- Respond to emails via the c2k email addresses only.
- Respond to any concerning comments our young people post on social media.
- When contacting parents via phone we will always ask to speak to their child or young person.
- All our children will be able to connect with their Form Teacher via Seesaw
- Other Agencies:
 - NSPCC Childline
 - CEOP
 - Safer Schools App

7. SOME USEFUL LINKS AND CONTACT TELEPHONE NUMBERS: –

NAME	DESIGNATION	EMAIL	CONTACT
Miss Laura Matchett	Principal	lmatchett572@c2kni.net	02890 862743
Mrs Avril Fryers	Vice Principal /Designated Teacher	afryers463@c2kni.net	
Mrs Suzanne Sloan	Deputy Designated Teacher (Secondary)	ssloan807@c2kni.net	
Mrs Fiona Jamison	Deputy Designated Teacher (Primary)	Fjamison501@c2kni.net	
CENTRAL GATEWAY			02894 424459
PSNI		cru@psni.pnn.police.uk	101 (non-emergencies) 999 (emergencies)

- <https://learning.nspcc.org.uk/safeguarding-child-protection/coronavirus>
- <https://www.camhs-resources.co.uk/>
- <https://www.childline.org.uk/info-advice/your-feelings/anxiety-stress-panic/worries-about-the-world/coronavirus/>
- <https://www.saferinternet.org.uk/helpline/report-harmful-content>
- <https://www.ceop.police.uk/Safety-Centre/>

8. MONITORING AND REVIEW

The Safeguarding team will review and amend these arrangements regularly during the period of Covid-19 school closure in line with Departmental guidance and advice.

SIGNED:	Designated Teacher
SIGNED:	Principal
SIGNED:	Chair of Board of Governors
DATE:	

Digital signatures will be considered in June 2021 if restrictive measures remain in place (e.g. social distancing measures etc.)