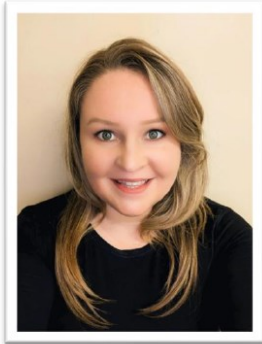


Safeguarding Team

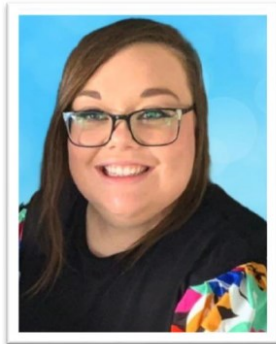
Appendix 4



Is something bothering you or do you just need to talk?
In St. Anthony's Primary School



Mrs C Tunney (Acting Principal)
Designated Child
Protection Teacher



Miss Mc Kenna
Deputy Designated
Child Protection Teacher



Mr N. Wilson
(Chair of the Board of Governors)



Mr A. McQuitty
Designated Safeguarding Governor

St. Anthony's P.S. Safeguarding and Child Protection



Information Leaflet 2025-2026

SCHOOL POLICY

We, in St Anthony's Primary School, aim to provide a caring, supportive and safe environment in which children can learn and develop.

It is our responsibility to ensure that all individuals are protected from risks of possible abuse.

All schools are required by law to have a Safeguarding Policy and to communicate this to parents.

A detailed policy document is freely available on request from the school office and also available to view on the school website.

THE SAFEGUARDING TEAM

Principal: Mrs C Tunney (Acting)

Designated Teacher: Mrs C Tunney

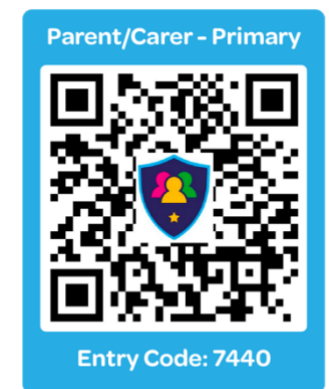
Deputy Designated Teacher: Miss S Mc Kenna

Chair of Governors: Mr N. Wilson

Designated Governor for CP: Mr A. McQuitty



Educate, empower & protect the entire school community.



Complaints made against a member of staff

If a complaint about possible abuse is made against a member of staff, the Principal (or the designated teacher if he/she is not available) must be informed immediately and manages the response. The above procedures will apply (unless the complaint is about the designated teacher).

Where the matter is referred to Social Services the member of staff will be removed from duties involving direct contact with pupils and may be suspended from duty as a precautionary measure pending investigation by Social Services. The Chairman of the Board of Governors will be informed immediately. Decision-making will be made jointly between the Principal and Chair of Governors.

If a complaint is made against the Principal, the designated teacher or her deputy (if she is not available) must be informed immediately. He/she will inform the Chairman of the Board of Governors and together they will ensure that the necessary action is taken.

What is Child Abuse?

Abuse can take any of the following forms:

□ **Neglect:**

The persistent or significant neglect of a child from exposure to any kind of danger, including cold or starvation, or persistent failure to carry out important aspects of care, resulting in the significant impairment of the child's health or development.

□ **Physical:**

Physical injury to a child, whether deliberately inflicted or knowingly not prevented.

□ **Sexual:**

The sexual exploitation of a child or young person for an adult's or another young person's own sexual gratification; the involvement of children or young people in sexual activities of any kind (including exposure to pornography) which they are unable to give informed consent or that violate normal family roles.

□ **Emotional:**

Persistent or significant emotional ill treatment or rejection, resulting in severe adverse effects on the emotional, physical and/or behavioural development of a child.

If at any time, a child makes a disclosure to a member of staff that gives rise to concerns about possible abuse, or if a member of staff has concerns about a child, the member of staff will act immediately and the following process will be applied:

Procedure for reporting suspected or disclosed child

1. He / she will speak initially to **Mrs C. Tunney** (Designated Teacher) who will discuss any concerns with **Miss S. Mc Kenna** (Deputy Designated Officer)
2. Make a written record
3. If appropriate, a referral will be made immediately to: Social Services, CCMS, EA North Eastern Region or Care Unit (PSNI)

Parents will be kept informed in line with statutory requirements.

Where a disclosure is made, the school is legally obliged to refer the matter to Social Services immediately.



HOW A PARENT CAN MAKE/RAISE A CONCERN

If a parent has a child protection concern they can follow the guidance below:

