

Meáchan - An Cileagram (kg)

1. Pléigh - Discuss

Bíonn an meáchan céanna sa **chileagram (kg)** i gcónaí.

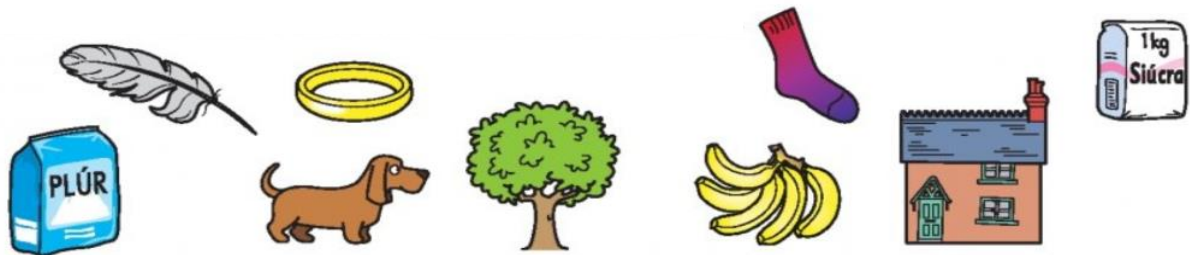
Smaoinigh

Cén fáth a bhfuil cileagram siúcra níos lú ná cileagram cleití?

Think!

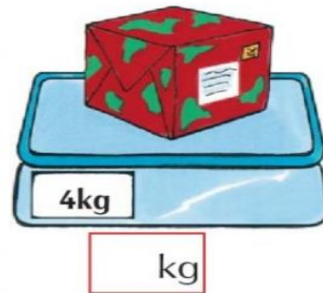
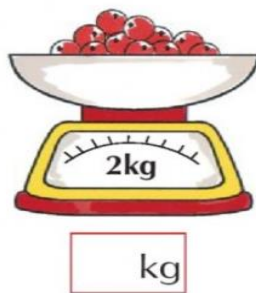
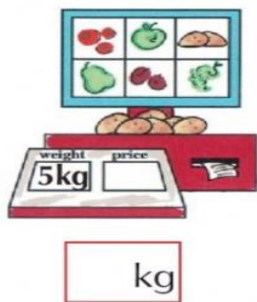
Why is a kilogram of sugar so much smaller than a kilogram of feathers?

2. Sórtáil na rudaí faoi na ceannteidil chearta.



níos éadroime ná 1kg	timpeall is 1kg	níos troime ná 1kg
(a) _____	(a) _____	(a) _____
(b) _____	(b) _____	(b) _____
(c) _____	(c) _____	(c) _____

3. Scríobh na meáchain atá ar taispeáint ar na scálaí seo.



- Sort the items under correct heading.
- Write the weight shown on each scale.