

# Meastachán le Milséain

Thig liom meastachán a dhéanamh ar mhéid tacair a fhad le 20!



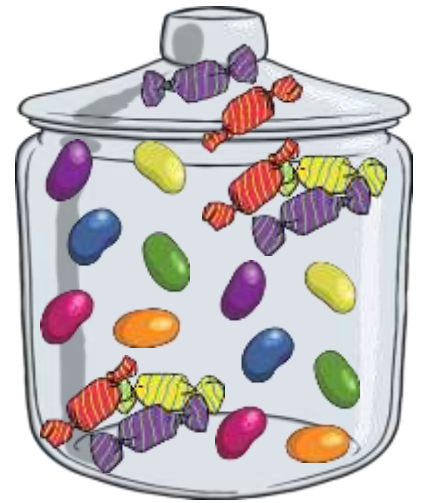
Meastachán \_\_\_\_\_

Cuntas \_\_\_\_\_



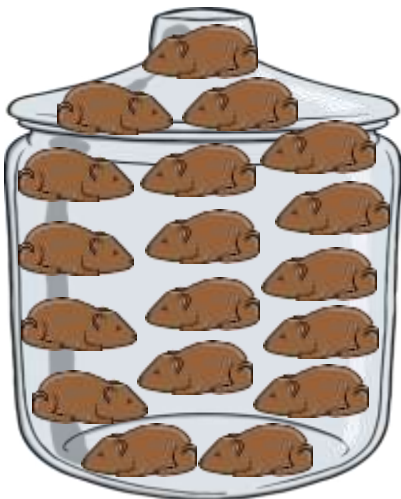
Meastachán \_\_\_\_\_

Cuntas \_\_\_\_\_



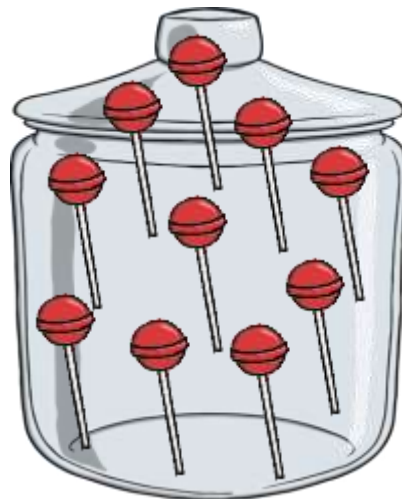
Meastachán \_\_\_\_\_

Cuntas \_\_\_\_\_



Meastachán \_\_\_\_\_

Cuntas \_\_\_\_\_



Meastachán \_\_\_\_\_

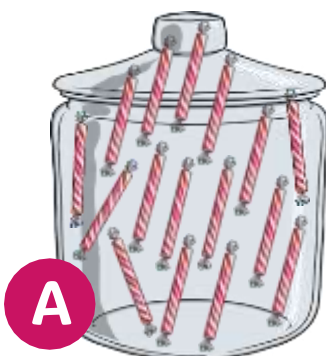
Cuntas \_\_\_\_\_



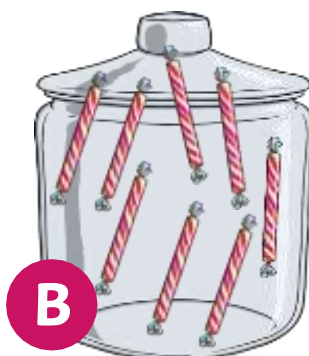
Meastachán \_\_\_\_\_

Cuntas \_\_\_\_\_

An bhfuil níos mó in A nó B? Déan meastachán agus ansin déan cuntas.



**A**



**B**

Meastachán \_\_\_\_\_

Cuntas \_\_\_\_\_

**Meastachán** = Estimate      **Cuntas** = Count  
**Tá níos mó milséain in A nó B?** There are more sweets in A or B?