

TOREAGH PRIMARY SCHOOL

Good morning everyone. As we approach the end of another month in lockdown and home schooling, the situation surrounding the pandemic continues to change every day. We again thank you for your engagement with home schooling. This has and continues to be difficult for everyone and we would encourage you to try and keep going, as there appears to be a light (no matter how small) at the end of the tunnel. Whilst we are looking forward to welcoming back the children in P1-3 on 8th March, as a school community, we will not be whole again until all our children return.

Looking forward, Minister Weir announced that the phased return to school will start on Monday 8th March. On this date we will be welcoming back the children in P1, P2 and P3. These classes will be in school from Mon 8th March until Friday 19th March. The following week all children will return to home schooling.

After Easter we hope to welcome some, if not all, the other classes back to school. We will await Minister Weir's announcement on this. Hopefully more information will be received in the next few days/weeks. We know that this has been a long period of home learning and really look forward to returning to a little normality as soon as it is safe to do so.

DATES

On **17th March**, school will be open for P1-3 and home schooling will continue for P4-7.

There will be no school or home schooling for anyone on **Friday 5th March and Friday 26th March**.

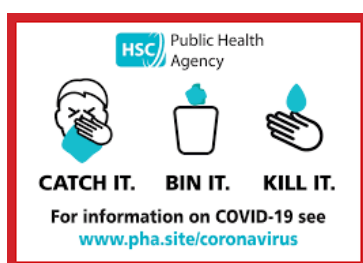
Please be aware that 26th March is subject to change depending on announcements from the NI Executive.

IMPORTANT INFORMATION FOR THE RETURN TO SCHOOL

Please try and get the children into a structured routine before they return to school. Remind them that they **MUST** follow the school rules really carefully.



We would ask you to remind your children of the importance of a regular and thorough hand washing. Keep practising this please.



In advance of the school reopening you should again discuss, explain and promote good respiratory hygiene to encourage your children to follow the 'Catch it, Bin it, Kill it' approach. Children should be discouraged from touching their eyes, face, nose and mouth. They should be shown how to cough or sneeze into their elbow if they don't have a tissue. If they have a tissue they should be shown how to cough or sneeze into it and then dispose of it safely into the nearest bin.

You can help to emphasise these issues and build up a level of routine actions on the part of your children before they return to school. We will of course be putting our routines back into place.

Please note that if your child has any symptoms of having the Covid-19 virus he/she should stay-at-home and your household should isolate in accordance with the latest Public Health advice. Symptoms include: raised temperature, persistent cough, loss of taste and loss of smell.

Have you taken
your child's
temperature?



Before children are brought to school each day we would ask you to take their temperatures to ensure they are normal. Staff will continue to use non-contact thermometers to check the temperature of children on entry to their classroom, if the temperature is outside the normal range parents/carers will be contacted. This will also be used for any child who appears to be 'off form' during the day. If any child presents as being unwell while in school, they will be brought to an isolation area (shelter) and supervised while their parent/carer is contacted. Please remember that SOMEONE MUST be available, at short notice, throughout the day.

If there is a positive case of someone in the school having the Covid-19 virus, we as a school will adhere to and participate in the Department of Health's 'Test, Trace and Protect' strategy. As this requires early identification and isolation of such cases, rapid testing, tracing of close contacts and early, effective and supported isolation to break transmission chains, it will be necessary for the school to have accurate records of everyone who has been in contact with anyone who tests positive. When the school reopens we will be recording the details of anyone entering the school building.

IT IS ESSENTIAL THAT WE ARE INFORMED IMMEDIATELY OF ANY CORONAVIRUS SYMPTOMS YOUR CHILD OR ANY MEMBER OF YOUR FAMILY MAY HAVE.

Drop off and pick up times

PLEASE BE ON TIME

Drop off and pick up times will continue to be staggered in accordance with advice. Once again it is vital that you abide by social distancing regulations when leaving your children at the gate and collecting them. Please move on as soon as possible.

	Drop off	Pick Up
P1	9.00am	1.45pm
P2	8.50am	1.45pm
P3	8.50am	2.00pm

PLEASE ENSURE THAT WHOEVER IS DROPPING OFF AND PICKING UP YOUR CHILD IS AWARE OF THE ROUTINES THAT ARE NOW IN PLACE. This is very important as it avoids awkward situations.

C L Morrow
Principal