



# PROSPECTUS

The Thompson Primary School







## CONTACT DETAILS:

42 Mossley Road  
Ballyrobert  
Ballyclare BT39 9RX  
Phone: 028 9335 2361

[www.thethompsonprimary.com](http://www.thethompsonprimary.com)  
email: [info@thompsonps.ballyclare.ni.sch.uk](mailto:info@thompsonps.ballyclare.ni.sch.uk)  
[www.facebook.com](http://www.facebook.com)





# The Thompson Primary School



## Statement of School Aims

- To provide a broad, balanced and coherent curriculum for each pupil, which meets the statutory requirements.
- To create an inclusive, safe, happy and stimulating environment for learning.
- To show respect for all cultures and, in so doing, to promote positive attitudes towards other people.
- To provide a curriculum which is appropriate to the needs of each pupil in the school and to enable them to fulfill their potential by maximizing each individual's talents and capabilities.
- To encourage relations between home and school and help pupils feel valued as part of their community.
- To prepare pupils for the opportunities, responsibilities and experiences of adult life and enable them to grow into reliable, independent and positive citizens in a rapidly changing world.
- To develop children's self-respect and encourage children to value the ideas, attitudes and feelings of others.
- To provide opportunities for pupils to become confident, resourceful, enquiring and independent learners and to achieve success in a variety of contexts, therefore promoting pupils' self-esteem.

## Board of Governors

### **E.A. Representatives:**

Dr L. Ball

Mrs V. McWilliams

### **Transferor Representatives:**

Mrs A. Pollock

Rev E. McDowell (Chairperson)

Mrs B. Watson

Mrs C. Barr

### **Parent Representatives:**

Mr N. Phillips (Vice Chairperson)

Mrs A. Graham

### **Teacher Representative:**

Mrs H. White

### **Honorary Secretary:**

Mrs A. Purdy (Principal)

## Teaching Staff

### **Principal :**

Mrs A. Purdy B.Ed(Hons) PQH(NI) L.T.C.L.

### **Assistant Teachers:**

#### **Primary One/SENCO**

Mrs S. McMullan B.A.(Hons) P.G.C.E.

#### **Primary Two**

Mrs H. Campbell B. Ed.(Hons)

#### **Primary Three/Senior Teacher**

Mrs H. White B.Sc.(Hons) P.G.C.E.

#### **Primary Four**

Miss J. Blair B.Ed.(Hons)

#### **Primary Five**

Mr N. McLean B.A.(Hons) P.G.C.E.

#### **Primary Six**

Mrs D. Walker B.Sc.(Hons) P.G.C.E.

#### **Primary Seven**

Mrs A. Purdy B.Ed.(Hons) PQH(NI) L.T.C.L.

Mrs C. Matthews L.L.B. S.C.I.T.T.

### **Literacy Support**

Mrs R. Wilson B. Sc. (Combined)

# Message from the Principal

I take great pleasure in presenting our school's prospectus. I hope it gives you a flavour of school life at The Thompson.

Our school motto is 'Every Child Matters'. We put this into practice by fostering a welcoming, warm and friendly atmosphere where each child is cared about by **all** of the staff at the school. We aim to help each child reach his/her full potential in all areas of school life and to build each child's confidence and self-esteem, equipping them to make a smooth transition to secondary level education and ultimately to the outside world. We strive to provide the best support we can to those children with a special educational need.

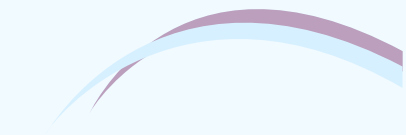
The children are also encouraged to develop sporting, musical, artistic or dramatic talents. We celebrate children's achievements in activities both within and outside school. We hold 'Award Assemblies' monthly where these achievements are celebrated. A 'Principal's Award' is also given, one to each class, on a monthly basis.

Anyone who wishes to, is very welcome to visit our school and find out about us for themselves. A visit to the school can be arranged through contact with the school office and an 'Open Evening' is held each November.

Mrs A. Purdy (Principal)







## About Our School

The Thompson Primary School was established in Ballyrobert village in 1928. It has since been a successful, co-educational controlled primary school.

The school buildings are surrounded by the hard surface play areas. At the front of the school we have an Eco Garden which is cared for by the pupils, under the direction of the School Council. At the back of the school we have a large grass playing field with a wildflower garden and play equipment.

The Thompson Primary School caters for children of 4 to 11 years of age and is a school of seven classes, Primary 1 to Primary 7.

The school is situated at the junction of the Mossley and Ballyrobert Roads in the village of Ballyrobert. We currently have 185 children enrolled in school. The numbers are stable and enable us to maintain seven classes.

At The Thompson Primary School we strive to ensure that all the children have access to the highest quality education possible. All the staff at the school provide excellent teaching to deliver the N.I. Curriculum to equip our pupils with the knowledge and skills necessary for the development of their education.





## Number admitted to Primary One in previous three years

Year	Applied	Admitted
2018/2019	27	27
2019/2020	24	24
2020/2021	28	28



## Admissions to School Open Enrolment—Admissions Criteria

Enrolment Number: 194 Admission Number: 28

Priority will be given to children who will have attained compulsory school age at the time of their proposed admission.

In selecting children for admission, children resident in Northern Ireland at the time of their proposed admission will be selected for admission to the school before any child not so resident.

Admissions criteria will be applied:

- The child has brothers and/or sisters already attending the school.
- Children who live closest to the school. (From child's home address at time of application, measured as walking distance by Google Maps).
- In the event of two or more children living the same distance from school, rank order will be determined on the basis outlined below:
- Final selection will be on the basis of the initial letter of the surname as it appears on the birth certificate, with pupils being selected in the order set out below. The order was determined by a randomised selection of letters generated by [www.dcode.fr](http://www.dcode.fr)

IGHYCKNSDXJRUFZPWEOLTBQM



## Our Mission Statement



We are proud to be an inclusive school, providing a high quality, creative and challenging education within a secure, caring and happy environment, where every child experiences a sense of enjoyment and achieves full potential.

## Criteria for Admission to Years 2-7

Pupils will be admitted to P2—P7 in accordance with the preference expressed by a parent if the school's enrolment number has not been reached, unless to do so would prejudice the efficient use of resources. The same criteria will be used for admission of children from P2—P7 as for P1.



## SCHOOL UNIFORM

It is the policy of the school to encourage the wearing of school uniform.

**GIRLS:** Blue blouse/school tie

Grey skirt/pinafore

School sweatshirt/maroon cardigan

White socks/grey or black tights

Black shoes

Summer Uniform:

Blue polo shirt/Grey skirt/Pinafore

Blue and white checked dress

**BOYS:** Blue shirt/school tie

Grey trousers

School sweatshirt

Grey socks

Black shoes

Summer Uniform:

Blue polo shirt/ Grey shorts/Trousers

N.B. When children are representing the school, school blouse/shirt and tie will be worn.

**P.E. UNIFORM:**

All children require black gym slippers for P.E.

P3—P7 also require navy school shorts and white school polo shirt for P.E.

P5—P7 require school tracksuit for games.



*School Uniform and P.E. Uniform is available from The Jeanery, Glengormley and Sport 'n' Sound, Ballyclare.*

## TIMETABLE

Morning school begins 8.55 am

Morning break 10.30 am

Lunch Time 12.15 pm

Afternoon school begins 1.00 pm

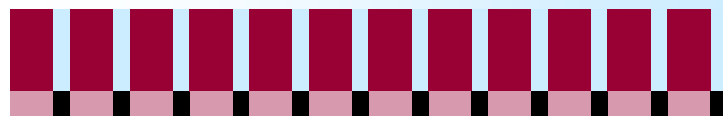
P1 - P2 children finish school 2.00 pm

P3 children finish school

Monday, Tuesday & Wednesday 3.00 pm

Thursday & Friday 2.00 pm

P4 - P7 children finish school 3.00 pm



## SCHOOL NEWS

Parents are kept informed of school matters via the school app, text service and website.

A list of holidays occurring throughout the year will be sent home each September to help you plan ahead. A reminder is always given before a holiday and you will be notified of any changes to the above information in the online newsletter.





# Curriculum Policy

In The Thompson Primary School, we aim to provide a broad and balanced curriculum for all children. We strive to give every child the opportunity to experience success in learning and to achieve as high a standard as possible.

Our teachers are dedicated to meeting the needs of each child, setting high standards for pupil effort, achievement and behaviour.



We encourage our pupils to develop lively, enquiring minds, to think creatively and to use their own initiative to work with increasing independence.

The Northern Ireland Curriculum sets out the minimum requirement that should be taught at each key stage. This will be followed and used as a starting point for teacher planning. In The Thompson Primary School, teachers are aware that pupils have different experiences, interests and strengths, which will influence the way they learn.

Approaches to learning and teaching provide suitable challenging opportunities for all pupils to take part in lessons fully and effectively. They enable all pupils to achieve.

For pupils with special educational needs, the staff take account of the type and extent of the difficulty experienced by each child. For those pupils whose attainments fall significantly below the levels expected at a particular key stage, degrees of differentiation of tasks and materials appropriate to the age and requirements of the pupil will be provided. For pupils whose attainments significantly exceed the expected levels of attainment during a particular key stage, teachers plan suitable challenging work by extending the breadth and depth of study across Areas of Learning.

Children, whom it is deemed would benefit from specialised/individual support are catered for in withdrawal groups, twice a week.

Assessment is an integral part of the learning process. Within the school a variety of summative assessment methods are used. These include NFER Reading Tests, Young Spelling Tests, STAR and GL Assessments. The results of these are used to track pupil progress and aid curriculum planning. These are enhanced by a range of formative assessment methods within daily practice.

Procedures are in place for parents to discuss the educational progress of their children. Parent/Teacher interviews take place twice a year while a written report is presented in June. Parents are encouraged to approach the class teacher through the Principal if they wish to discuss a concern regarding their child, at any time.





# The Curriculum

The following subjects are taught in line with the Revised N. Ireland Curriculum.

Area of Study	Subjects	Cross-Curricular Themes
Language & Literacy	Talking & Listening Reading Writing	Communication
Mathematics & Numeracy	Mathematics & Numeracy Across the Curriculum	Using Mathematics
The Arts	Art & Design Drama Music	Using Information and Communications Technology
The World Around Us	History Geography Science	<u>Thinking Skills &amp; Personal Capabilities</u> Thinking, Problem Solving & Decision Making
Personal Development & Mutual Understanding	Emotional Development Social Skills Health Education Mutual Understanding of Local and Global Communities	Self Management Working With Others Managing Information
Physical Education	Knowledge, Skills and Understanding of Physical Activities	Being Creative



## Complaints Procedure

In the event of a complaint about the school, parents should in the first instance write to the Principal. The Principal, in liaison with relevant staff, will seek to bring about a resolution of the matter.

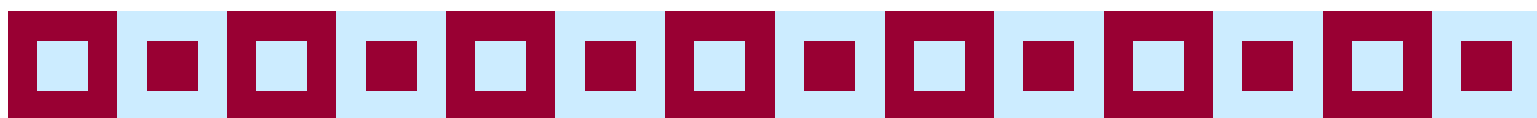
If such a resolution does not emerge, parents should write to the Chairperson of the Board of Governors. He will raise the matter at the next Governor's meeting. They will arrange a hearing for the complaint and reach a decision on whether or not to uphold a complaint.

If a resolution has still not been arrived at, parents may refer the matter to the Office of the Northern Ireland Public Services Ombudsman (NIPSO).

## Punctuality

It is important that each child realises the necessity of punctuality especially at the beginning of the school day. It is understandable that, due to weather or traffic conditions, late arrival at school may not be avoided. However, in normal circumstances, it would be appreciated if your child's arrival and departure from school is punctual.

The School Attendance Rate for 2019/2020 was 96.6%.



## End of Key Stage Results 2019/2020

### Key Stage 1

95.2% of end of Key Stage 1 pupils achieved Level 2 (or above) in Mathematics

90.5% of end of Key Stage 1 pupils achieved Level 2 (or above) in English

100% of end of Key Stage 1 pupils achieved Level 2 (or above) in I.C.T.

### Key Stage 2

85% of End of Key Stage 2 pupils achieved Level 4 (or above) in Mathematics

85% of end of Key Stage 2 pupils achieved Level 4 (or above) in English

85% of end of Key Stage 1 pupils achieved Level 4 (or above) in I.C.T.



## Religious Education

This will follow the requirements of the prescribed syllabus.

School Assemblies will be held regularly. Each Tuesday and Thursday a visiting speaker, e.g. a local Minister, will lead the assembly.

Parents have the opportunity to withdraw their children from Religious Education and assemblies if they wish.



## P.T.A.

The school has an active P.T.A. who organise events and functions to enable parents to meet and become actively involved in their child's education. These events provide much needed funds for the school.

## Healthy Eating School

We encourage pupils to maintain a healthy lifestyle and ask them to bring a healthy break on the first four days of the week, with Friday being a treat day. Healthy lunches are served daily in the school canteen and milk is available to order in school.



## Homework

Homework is seen as a necessary and worthwhile extension of classroom teaching and discipline. It is integral to the ethos of the school. It encourages self-discipline and self-reliance in the children and prepares them for the home study expected at post-primary level. Homework provides opportunities for both pupils and parents.

It provides an opportunity for pupils:

- to work independently of the teacher;
- to practise and consolidate what they have learned in school.

It provides an opportunity for parents to:

- co-operate and work with their child;
- gain some idea of the type of work being covered in class;
- create a partnership between teachers and parents.





# Drugs Education Policy

The school ethos promotes the moral, intellectual, personal and social development of its pupils.

We aim to prepare pupils for the opportunities, responsibilities and experiences of adult life and to encourage self-discipline, respect for others, themselves and the environment.

Children's levels of confidence and self-esteem are boosted both in the classroom and in the playground. We are committed to the fact that real learning can only take place where the children are at ease and this has been endorsed in our most recent Inspection Report which states that 'The children are motivated and enthusiastic learners.'

There is a happy and relaxed atmosphere with parents, some of whom come into the school to help on a voluntary basis with classroom activities. Staff and parents work together to provide a warm, caring environment where children can feel valued and happy.

It is the legal obligation and moral duty of the Board of Governors and the staff of this school, to provide pupils with the knowledge and skills to prepare them for adult life. We will do this through our PDMU programme of which Drugs Education is an integral part.

## School Policies

All Management and Curriculum Policies can be obtained from the School Office, on request. These include Child Protection Policy, Anti-Bullying Policy, Discipline Policy, Charges and Remissions Policy and Special Educational Needs Policy.





## Extra-Curricular Activities

A range of extra-curricular activities are organised on four afternoons, after school, for P4—P7 children.

These include:

Football



Hockey



Badminton



Computer Club



Art & Design



Choir



Orchestra



Scripture Union



Eco-Club



There are also opportunities for pupils to participate in Music Festivals, Tournaments, Musicals, Concerts, Heart-start Training and Cycling Proficiency.







## Pastoral Care

The quality of the pastoral care provision was highlighted in our most recent Inspection Report:

*‘the very good quality of the pastoral care provision is exemplified by the caring, child-centred approach demonstrated by all who work in the school’.*

Support is provided for the younger children through a ‘Buddy’ system whereby the Primary Seven pupils act as Playground Pals to the Primary One and Two children. The provision of ‘Buddy Stops’ around the playgrounds ensures no child is alone and feeling left out.

Older pupils also act as ‘Learning Buddies’ to the younger children and this not only provides support for the early years but also develops responsibility and builds self-esteem in the senior classes.

- ◆ We are gentle
- ◆ We listen to people
- ◆ We work hard
- ◆ We are honest
- ◆ We look after property
- ◆ We are kind and helpful



## What our pupils think of our school:

"The Thompson Primary is the best school in the world."

"We have lots to offer, like after school clubs, breakfast club, hockey, football and choir; but we also work hard."

"The teachers are great."

"This school is a very sporty school."



## Breakfast and Afterschool Clubs

Breakfast Club runs daily from 8.00am—8.45am

Children are provided with a choice of cereal or toast and juice and are able to spend time with their friends before school in a safe environment.

Afterschool care is available from 2.00pm and runs until 5.30pm. Children are provided with a snack during this time and enjoy games, puzzles and art activities.



## School Trips

Educational visits take place each year. P6 & P7 pupils enjoy residential visits to Dublin and Lorne Guide House in Cultra. This is an opportunity to develop organisational and social skills and enjoy fun.





