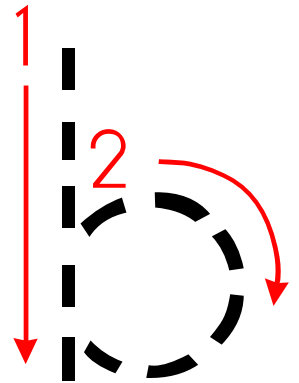
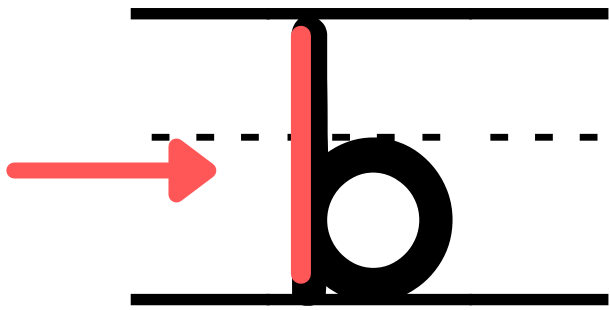
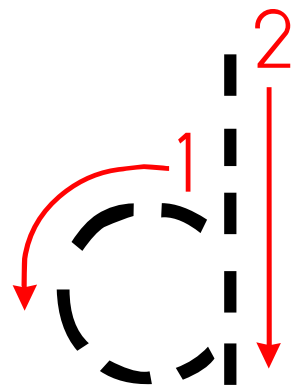
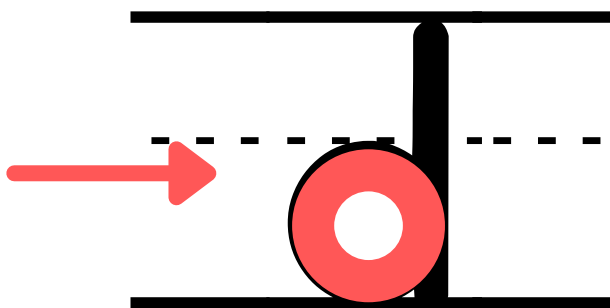


/b/ and /d/

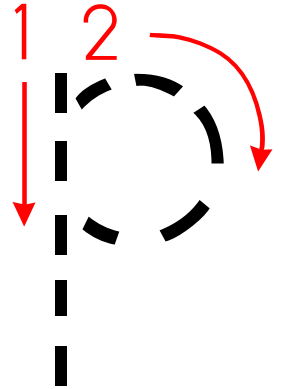
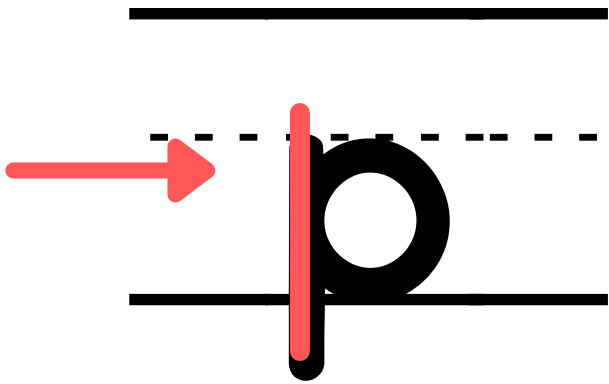


When we come to the line first, start with a closed mouth. Pretend you are making a straight line with your mouth.

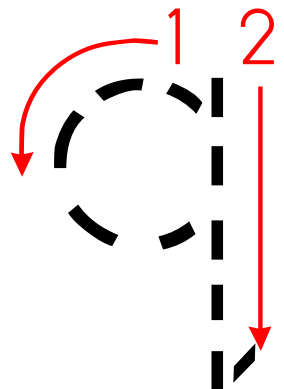
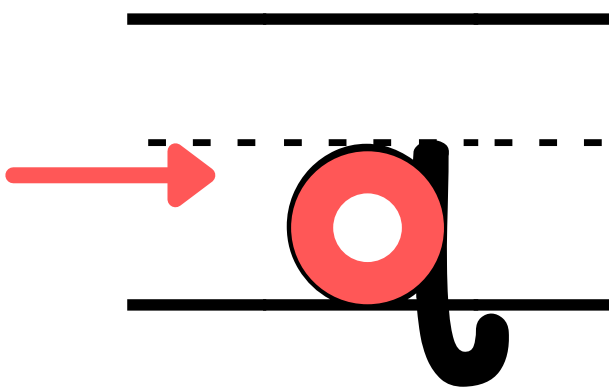


When we come to the curve first, think of this curve as an open shape. Keep your mouth open while you say the sound.

/p/ and /q/



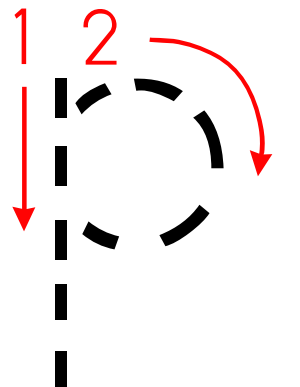
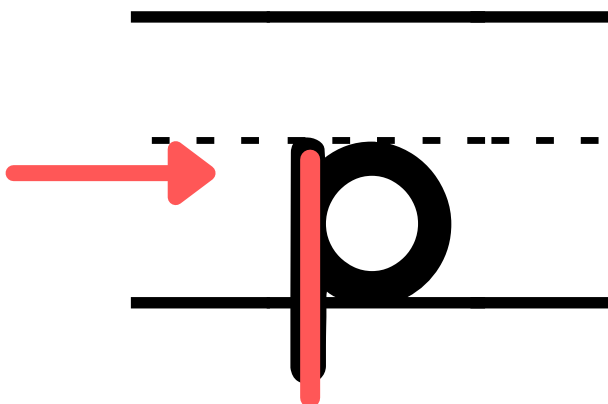
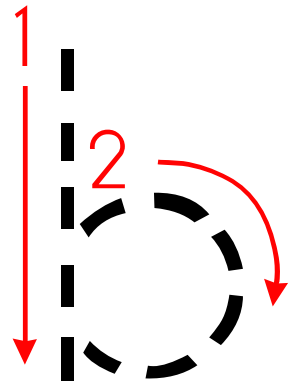
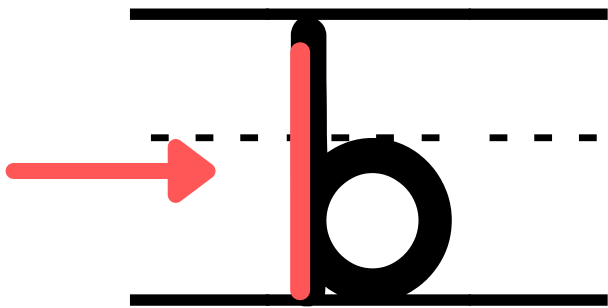
When we come to the line first, start with a closed mouth. Pretend you are making a straight line with your mouth.



When we come to the curve first, think of this curve as an open shape. Keep your mouth open while you say the sound.

b and p

When we come to the line first, start with a closed mouth. Pretend you are making a straight line with your mouth.



d and q

When we come to the curve first, think of this curve as an open shape. Keep your mouth open while you say the sound.

