

Sorting Living Things Out

Because there are so many varied (*different*) plants and animals, scientists need to keep dividing them into smaller groups to identify them. They look for *differences* and *similarities* to put the plants and animals into *groups*.



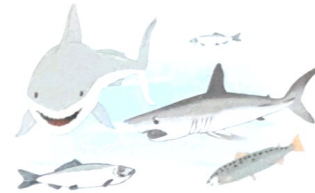
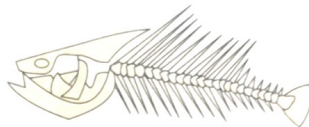
Animal Groups

All the animals in the world can be put into one of two groups 1) **Vertebrates** or 2) **Invertebrates**.

VERTEBRATES are animals with a **backbone**

Fish

breathe with gills
lay eggs in water
have fins and scales
body temp. changes
e.g. trout, shark, salmon



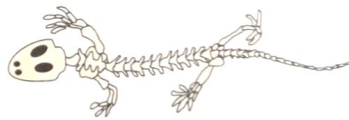
Amphibians

born with gills then develop lungs
lay eggs in water
damp skin
body temp. changes
e.g. frog, toad, newt



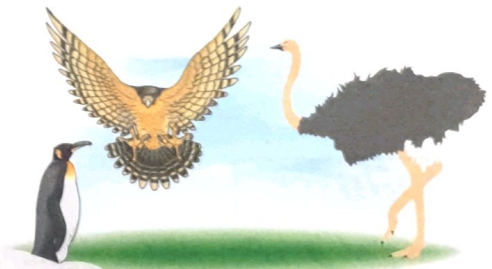
Reptiles

breathe with lungs
lay eggs on land
dry scaly skin
body temp. changes
e.g. alligator, snake, crocodile, tortoise



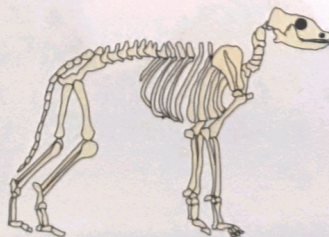
Birds

breathe with lungs
lay eggs with hard shells
feathers
steady body temp.
e.g. penguin, ostrich, falcon



Mammals

breathe with lungs
babies born live
body hair or fur
steady body temp.
feed babies milk
e.g. dog, whale, lion, seal, bat, human



Vertebrates — spine chilling stuff...

There's quite a lot of information here. Look at *one* group at a time and learn the things that the animals in that group have got. The pictures will help it make sense. See how you can *divide* the animals up by asking *questions* like "does it lay eggs?". That's good practice for later.