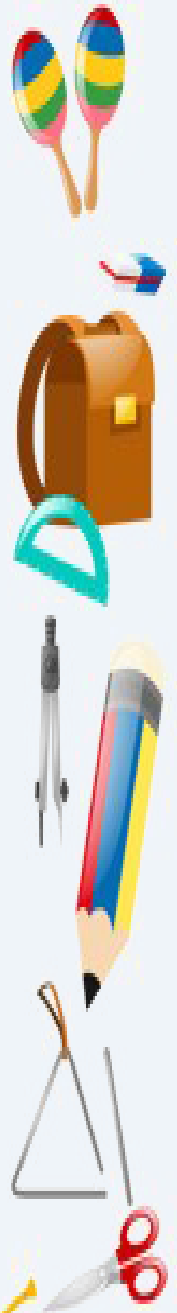
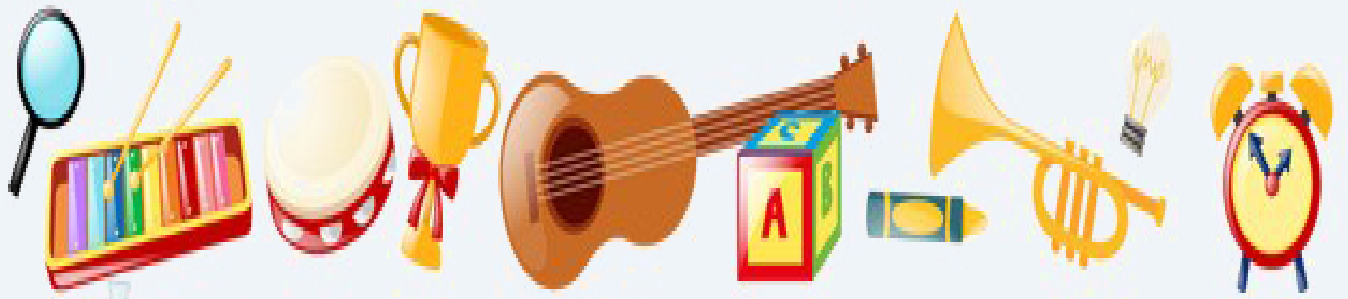




WWW.KILLYHOMMONPS.COM





Principal: Mrs Resha Rasdale

51 Aghaherrish Road

Boho

Enniskillen

Co Fermanagh

BT74 8BZ

Tel: 028 66341286

www.killyhommonps.com

Email:

info@killyhommonps.enniskillen.ni.sch.uk





Dear Parent,

On behalf of the staff of Killyhommon P.S., I would like to extend a warm welcome to you and your child.

Killyhommon PS is a co-educational, Catholic maintained, primary school situated in Boho in the parish of Botha. It is a caring school where the whole community shares a common goal - to do the very best for all the children in its care.

As a Catholic school our overriding aim is to establish and foster Christian values for life. To do this it is essential that we work in partnership with all our parents and the parish community. Indeed the success of our school depends on the good co-operation between staff, pupils, parents and the local community.

This prospectus is intended to give you an idea about the life and work of our school. It will provide you with information on the curriculum we offer and the experiences available to our pupils.

Of course no booklet can convey the real atmosphere of a school. I warmly invite you therefore to come and visit us to see the school and visit our website www.killyhommonps.com. We look forward to seeing you and hope you will share with us in making this a successful and memorable period in your child's life.

Yours sincerely

Mrs Resha Rasdale
Principal

OUR AIMS AND PURPOSES



Killyhommon PS aims to provide:

- Quality education for every child.
- A broad and balanced curriculum.
- An awareness of every child's talents, skills and abilities.
- A love of learning, knowledge how to learn and the motivation to produce the best possible work.
- An awareness of the immediate environment and an attitude of tolerance of other individual groups, nations and religions and ways of life.
- Effective communication between members of the school community.
- The development of lively and enquiring minds and the ability to question and make informed decisions.




MISSION STATEMENT


Killyhommon PS seeks to serve the Boho Community through the provision of a caring and Christian experience which aims to empower young people to develop their potential for life. We aim to do this within a broad and balanced learning environment.



We seek to establish an educative community, centred on Christ so that his values and Gospel message pervade the whole life of the school.



Our vision for Killyhommon PS is that we as a staff, together with parents and governors endeavour to have a school where the worth of each individual is uppermost, where good relations are established and cemented in an atmosphere of respect, care and commitment and where educational experiences have a relentless focus on learning for now and the future.



Meet the Killyhommon Team



Mrs Rasdale
Principal
P7 Teacher



Mrs Gilheaney
P1/P2 Teacher



Mrs Collins
P3/P4 Teacher



Meet the Killyhommon Team



Miss McGorty
P5/P6 Teacher



Rose McHugh
P1/P2
Classroom Assistant



Meet the Killyhommon Team



Aisling McGahey
Secretary &
Classroom Assistant



Stacey Harron
Classroom Assistant



Meet the Killyhommon Team



Kieran Leonard
Building Supervisor



Frances Rasdale
Cook



Fr. Cathal Deery
Killyhommon Chaplin





Reconstitution of Board of Governors

Chairperson: Louise Mc Laughlin

Vice Chairperson: Nichola Mc Grath

Parent Representative: Oliver Mc Gurn

Teacher Representative: Helen Gilheaney

DE: Representative: Joanne Attwood

EA Representative: Margaret Corrigan

EA Representative: Peter Gallagher

Trustee: Joanne Mc Hugh

Trustee: Anthony Duffy



Admission Criteria



Admissions criteria for entry September 2025

DUTY TO VERIFY

Applicants should note that they will be required to produce documents verifying their address. All applications should provide any two of the following four documents;

- A bank or building society statement which shows the address at which the child is resident;
- A utility bill (for instance electricity, gas, Television License, telephone) which shows the address at which the child is resident.
- A letter awarding Child Benefit to the child or another letter relating to this benefit;
- The child's Medical Card.

WAITING LIST POLICY

The school does not operate a Waiting List Policy.

ADMISSIONS CRITERIA – YEARS 2-7

The Board of Governors of Killyhommon Primary School will apply the following criteria in the order set down below to all pupils seeking admission to years 2 to 7. However the school cannot allow the number of registered pupils to exceed the school's enrolment number as determined by the Department of Education.

- 1 Pupils for whom their admission would not, in the Board of Governor's opinion, prejudice the efficient use of the school's resources.
- 2 Pupils will be accepted in the order of application.

In the event of being over-subscribed on the last criterion that can be applied then the following Sub-Criteria will be used:

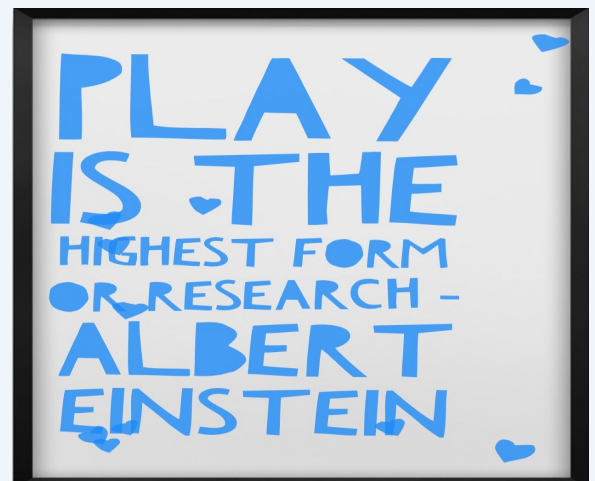
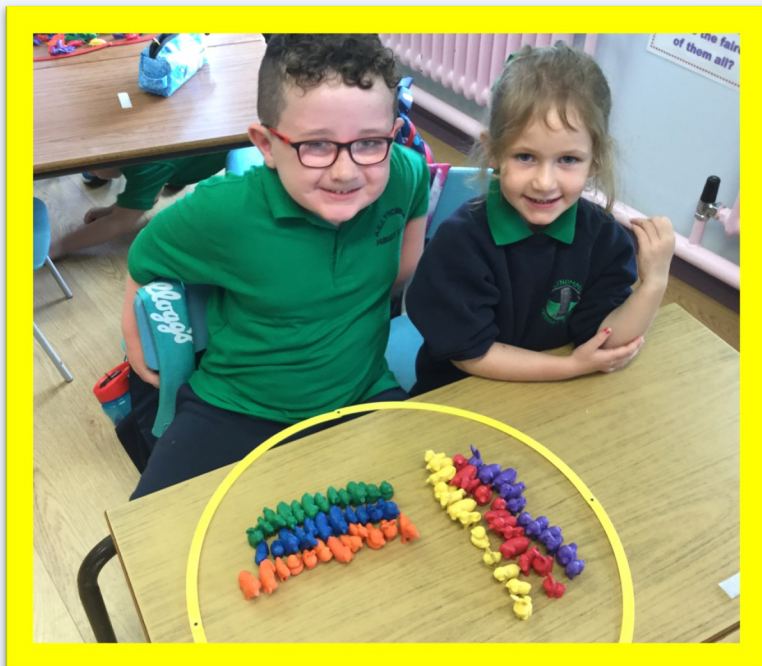
- (a) children who have brothers/sisters or half-brothers/half-sisters attending the school.
- (b) children whose parent/guardian is employed on the school staff, either in a teaching or non-teaching position.

Applications and Admissions to Primary 1		
Year	Total Applications	Total Admissions
2022/2023	9	9
2023/2024	13	12
2024/2025		

Foundation Stage

Play is fundamental to learning in Foundation Stage. We build on the wonderful experiences from home and pre-school.

Our teachers plan challenging activities that develop your child's interests, curiosity and creativity.



The statutory curriculum in Foundation Stage is set out under the following Areas of Learning:

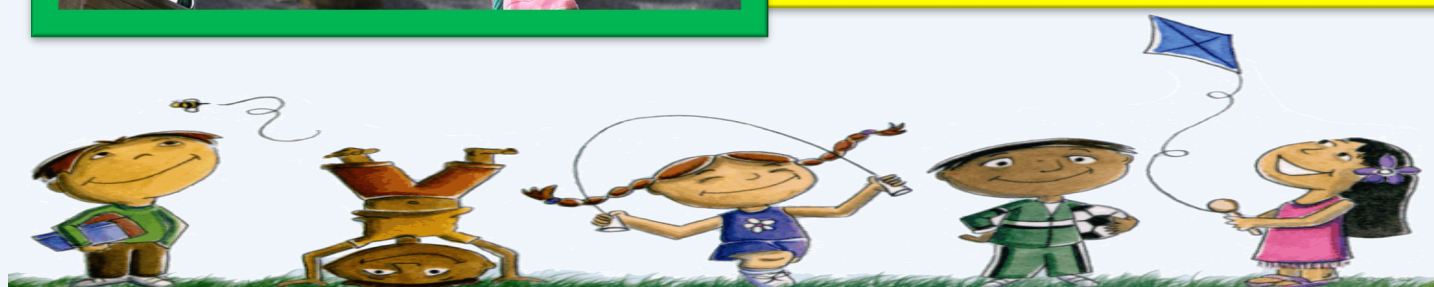
- Language and Literacy
- Mathematics and Numeracy
- Religious Education
- The World Around Us
- Personal Development and Mutual Understanding
- Physical Development and Movement
- The Arts




Outdoor Learning

At Killyhommon we greatly value the importance of outdoor play. It is one of the best possible environments in which to learn and we have invested significantly in its development.

Our Foundation Stage classes avail of a dedicated outdoor play area with timetabled lessons throughout the week.





The best
CLASSROOM
and the
richest cupboard
is roofed only
by the *Sky.*

By Margaret McMillan



The Curriculum

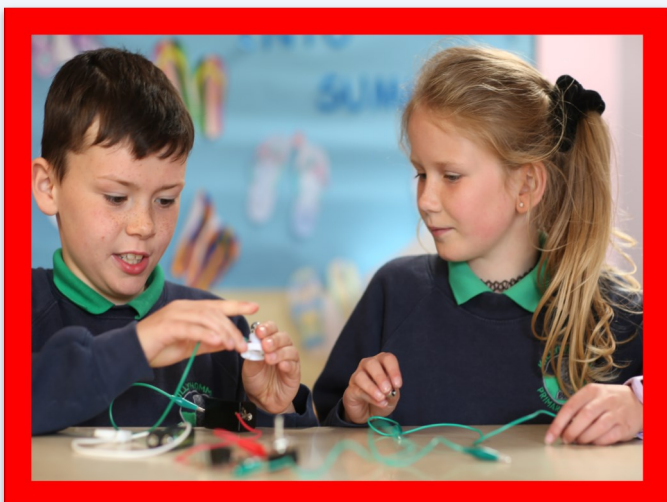
Key Stage 1 (Years 3&4) builds on Foundation Stage experiences, and Key Stage 2 (Years 5,6&7) builds on Key Stage 1 experiences. As children progress through these stages, they move from informal to more formal learning.



Our outstanding teaching team employ a range of different teaching approaches depending on the learning styles of the children and the subjects taught. Activities are carefully matched to pupils' individual needs and abilities, to ensure effective learning.



The progress made by your child will be carefully monitored by continuous observation and assessment throughout the year. Standardised tests are from Y3-Y7 to assess the progress of each child and each class.



Language and Literacy

In Language and Literacy children learn the skills they need to interact. These enable children to interact effectively in the world around them, express themselves creatively and communicate confidently (CCEA)

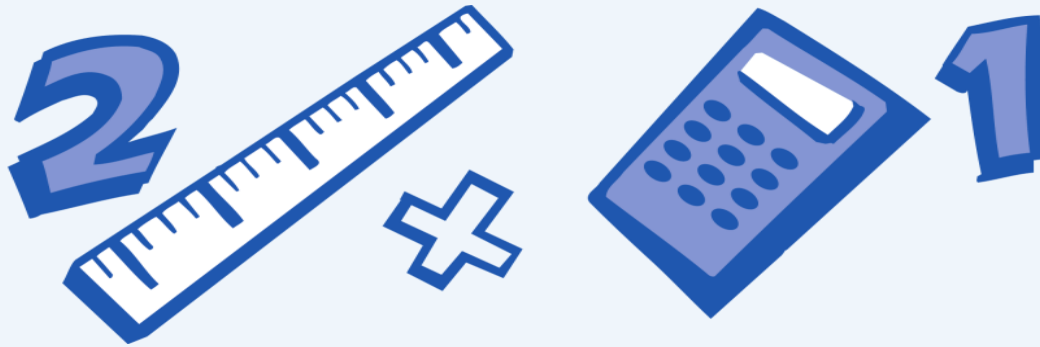


In Foundation Stage the children follow a highly structured Phonics programme which gives them the foundations they need to learn how to read.

As they grow, we carefully craft opportunities in Key Stages 1 and 2 to encourage deeper understanding of texts and enable the children to communicate effectively in spoken and written format.



Mathematics and Numeracy



Mathematics and Numeracy gives children a wider understanding of how the world around them works and prepares them for making decisions, solving problems and processing everyday information.

At Foundation Stage, Mathematics and Numeracy are developed through play based activities.

In Key Stages 1 & 2, children explore ideas whilst using practical materials and mathematical language to explain their thinking.



The Arts

The Arts has three strands: Art and Design, Drama, and Music. The Arts develops children's creativity and encourages them to express their ideas, feelings and interpretations of the world through pictures, sound, drama and dance.



World Around Us

The World Around Us encourages children's natural curiosity and answers some of their questions about the world from the perspectives of Geography, History, and Science and Technology. We follow a thematic approach in delivering this area ensuring our topics meet the interests of each year group.



PE

We strongly value the role of Physical Education in a child's development. We aim to deliver 2 hours of P.E. per week, covering Dance, Swimming, Athletics, Gymnastics and Games.

We are delighted to offer extra-curricular sporting activities from P1 to P7. Our staff have taken after school clubs in Gaelic, Soccer, Netball and Fundamental Movement. We also welcome external providers such as Core NI, Fermanagh GAA, Relax Kids, Fermanagh Ju Jitsu, Yoga etc.



Religion



In Killyhommon, we follow the Grow in Love programme. We treat each other the way God wants us to, encouraging care, courtesy, concern and respect for our world and those in it.

We belong to the parish of Botha and work closely with Fr. Deery to prepare our children to receive the Sacraments, as they grow to become adult members of our Church.



What our children and parents have to say..

"I love playing with friends outside and having lunch with everyone. I like after school clubs. We do lots of crafts and art. I love my teachers, they're very wise."

"We are all kind, caring and learn well and have lots of fun."

"The effort put within the school is excellent."



"I love yoga, the afterschool club and learning new things. I like the teachers very much, they are fun, kind and make me happy."

"They push to help children succeed no matter what their capabilities might be."

"An excellent place to learn, grow and develop in confidence. Very happy environment and lots for my child to avail of especially in a rural area." Something to be very proud of."

ICT



During lockdown we delivered a very successful online programme of learning.

'I can only praise the fantastic work with my son. The provision is brilliant. The live classes in particular give great guidance and support. Also thank you for the pastoral support.' **Parent Questionnaire March 2021**

In Foundation and Key Stage One we used Collaborate Ultra to deliver high quality lessons during lockdown.

'The videos are a great addition and the children enjoy seeing their teachers' faces.' **Parent Questionnaire March 2021**

In Key Stage Two we used Microsoft teams to teach daily live lessons to the children.

'The Microsoft Teams interaction is great. It is nice to communicate with teacher and pupils. Thanks to all Killyhommon staff for their hard work.'

Every classroom has a brand new interactive whiteboard and each class is equipped with 10 ipads. We also have enough computers for whole class ICT lessons.

We have established links with The Nerve Centre (Derry) and The AmmA Centre (Armagh) which staff and pupils benefit greatly from.



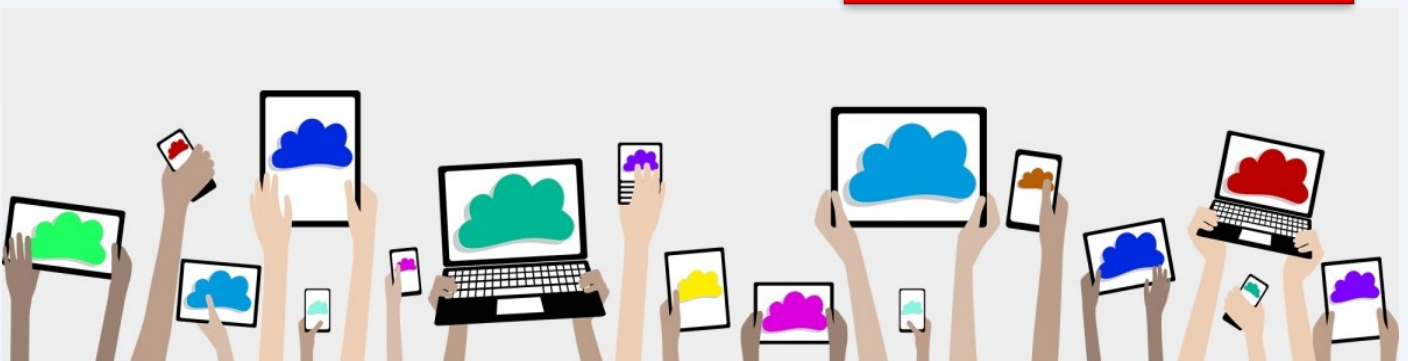
ICT

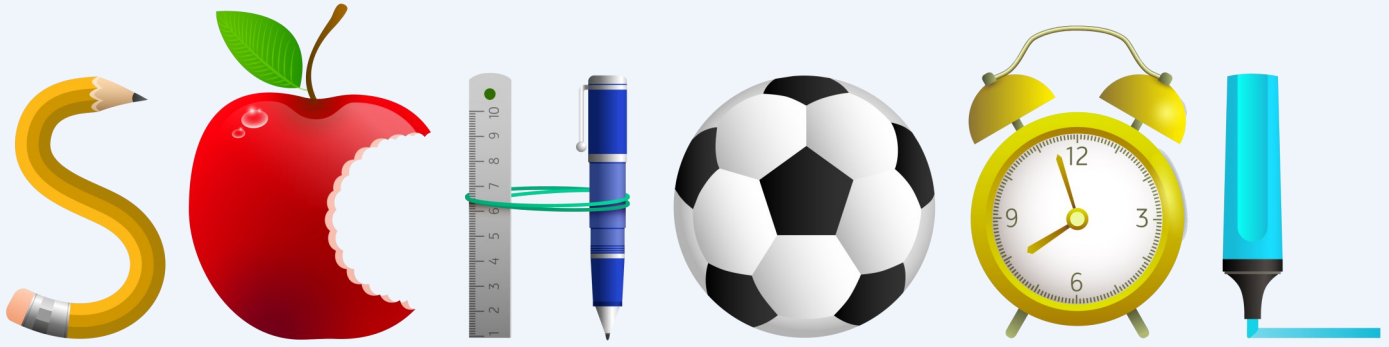
We are really well resourced with ICT. Every classroom has a brand new interactive whiteboard and each class is equipped with 10 ipads. We also have enough computers for whole class ICT lessons.

We have established links with The Nerve Centre (Derry) and The AmmA Centre (Armagh) which staff and pupils benefit greatly from.

E-safety and Safe Use of the Internet

The staff are very conscious of the educational benefits of the Internet but are also aware of the possible dangers. Our E Safety policy outlines guidelines for staff, children and parents. A copy is distributed to parents and permission is required for each child to use the Internet.





Special Needs

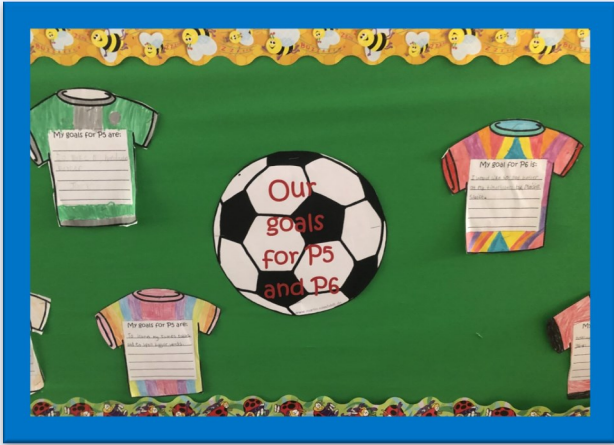
Ongoing assessment, both formal and informal, ensures that children who are encountering difficulties in any area of the curriculum are detected early. Children are supported within the classroom or withdrawn for extra help on an individual or small group basis. Children who are identified and assessed as needing extra support will be included on the Additional Needs Register and parents will be informed. Personal Learning Plans are drawn up to target the next steps in learning and pupils and parents are asked to make meaningful contributions.

Teachers work closely with classroom assistants, the SEN co-ordinator, parents, medical and psychological services and a range of other agencies in order to ensure that every child makes progress. The school's Special Needs Policy addresses all the requirements of the DENI Code of Practice on the 'Identification and Assessment of Special Educational Needs.'



PDMU and Well Being

Personal Development for Mutual Understanding (PDMU) focuses on encouraging children's emotional and social development, confidence, independence, and health and safety awareness, and on developing their moral thinking, values and actions.



Through relaxation, mindfulness and self-esteem exercises, we encourage children to see their strengths, be more resilient and develop a positive mindset.

We encourage our children to set targets for themselves and celebrate their achievements.



PASTORAL CARE

Each member of staff has an important role to play in ensuring that the children are safe and happy. Full versions of **all policies** are available on the school website.

Child Protection

In the event of a concern about a child's welfare, parents should contact the principal who will investigate the matter and report back to the parents.

If the complaint is a Child Protection issue, the procedures agreed in the *Child Protection Policy* will be followed.

If I have a concern about the safety of a child:

I can talk to the teacher

If I am still concerned I can talk to the Designated Teacher for Child Protection

(Mrs H Gilheaney)



I can talk to the Principal (Deputy Designated Teacher for Child Protection)

(Mrs R Rasdale)



If I am still concerned I can talk/write to the Chairperson of the Board of Governors

(Mrs L Mc Laughlin)

Keeping Safe At Killyhommon PS

If in doubt, ACT



Mrs Gilheaney



Mrs McLaughlin

Tell a member
of staff you
trust or any of
the following
members of our
**SAFEGUARDING
TEAM.**



Mrs Rasdale

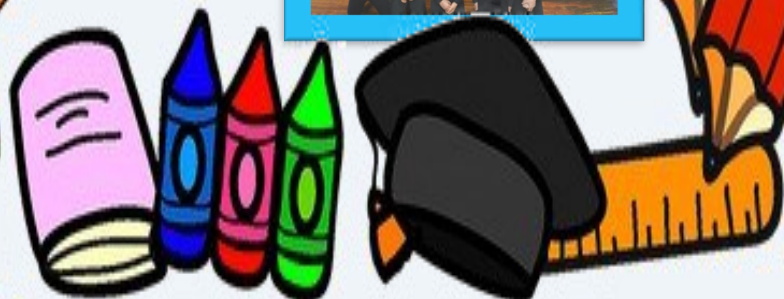


Ms McHugh

Charity

The school supports a number of charities each year and we are proud of our effort. Numerous charities make applications to the school each year. The school endeavours to rotate fundraising efforts for charities.

Subscriptions made to these are voluntary. Since 2009 the school has donated over £60,000 to N. Ireland charities! Along with various fundraising activities, proceeds from our wonderful 'Inspirational Diary' have really encapsulated how a little school can make a big difference.



Shared Education

The school works with Derrygonnelly Primary School in a Shared Education Programme and we are looking forward to developing this further by having shared classes with children from St. Patrick's PS, Derrygonnelly.



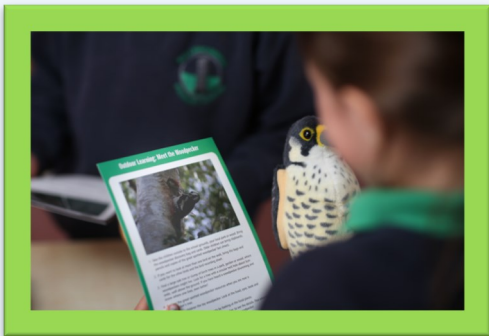
School Council

We have an active School Council. There are two representatives from each class in Years 4-7 on the council. Pupils in Years 1 and 2 can present their ideas too. We believe in hearing the voice of the pupils. The School Council bring issues raised by class councils to the table.



ECO-Council

The School has an ECO-council. They meet and work on issues that we need to work on to improve our environment. These include active travel to school, global issues, re-cycling and saving water and energy. We have our own solar panels and food is composted. We have pollinator flower beds and we grow lots of vegetables in the raised beds and poly tunnel. The school holds three ECO Flags.



Forest School

Over the recent years our school has been working towards having a greater emphasis on outdoor learning. We pride ourselves on being an eco-friendly school. Killyhommon PS is now a recognised Forest School. As a Forest School we want to bring learning outdoors regularly and be creative in our teaching, including lessons that feels almost automatic for the children that the outdoors is an extension of the classroom, and it is a natural environment for learning to occur. The Northern Ireland Forest School Association incorporates aspects of history, geography and science, and has a strong emphasis on promoting numeracy and literacy. At Killyhommon, we believe learning outdoors encourages confidence and independence. We aim to continue to build our pupils' confidence and independence through our outdoor lessons and hope to continue to see the benefits of the Forest School approach for our pupils, such as, taking risks, working independently and as a team, communication skills as well as personal and social development.



Roots Of Empathy



Roots of Empathy

Racines de l'empathie

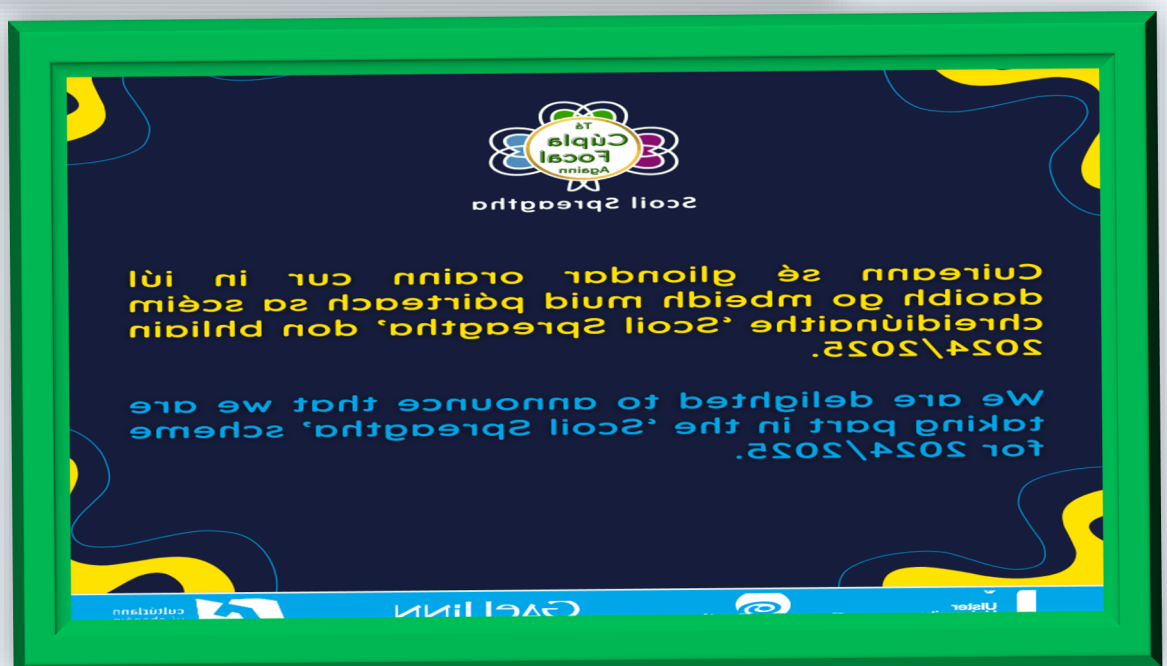


We deliver the Roots of Empathy programme. This develops emotional literacy in children as they observe a baby and begin to identify and label the baby's feelings. They then reflect on and understand their own feelings and bridge to understand the feelings of others. Roots of Empathy reduces aggression, increases sharing, caring, and inclusion, and promotes resilience, well-being, and positive mental health.



Scoil Spreagtha

In Killyhommon we work hard to promote the Irish language and we are delighted to have been awarded Scoil Spreagtha status. The Scoil Spreagtha scheme aims to encourage the daily use of Irish in the school environment. Irish is visible and celebrated throughout the school. Children and staff use words and phrases daily and also learn songs and poems in Irish throughout the year.





Killyhommon Primary School

June 2021

A Lovely Place To Learn



Uniform

We wear our school uniform with pride

- Navy trousers/tracksuit bottoms
- Navy Skirt
- Navy Sweatshirt
- Green Polo Shirt

School Day

9.00am	Doors Open
9.20am	Class Begins
10.30am	P1-P4 Break
11.00am	P5-P7 Break
12.15pm	P1-P4 Lunch
12.30pm	P5-P7 Lunch
2.00pm	Home Time P1-P2
3.10pm	Home Time P3-P7



Killyhommon PS

51 Aghaherrish Road

Boho

Co.Fermanagh

BT74 8BZ

028 66 341286

www.killyhommonps.com

info@killyhommonps.enniskillen.ni.sch.uk

