

Nettlefield News

MONDAY 9TH NOVEMBER 2020



School Return

- ▶ **Please remember our start and finish times**

- ▶ P1 / P2 1.30pm Home Time
- ▶ 8.45am P3 / P4 1.45pm Home Time
- ▶ 9.00am P5 – P7 **1.55pm** Home Time ****NEW****



- ▶ **REMEMBER:**

- ▶ **Peter Weir MLA has now asked parents to observe strict social distancing in school grounds and to wear face coverings when dropping children off.**
- ▶ Please find at 0:34 seconds into the this link below
- ▶ [Minister Weir's Statement](#) (click this)
- ▶ **Facemasks Essential.**



School Safety

► REMEMBER:

- Please obey 2m distancing from school / classroom exit doors and observe the painted markings outside P1 – P3 rooms. **Do not cross the yellow semi circles please.**
- In the interest of keeping people safe, please do not speak to teachers at pick up and drop off – please use our Seesaw messaging system.



Flu Vaccinations

- ▶ Please remember our flu vaccinations (nasal spray) will take place on Friday 13th November 2020 during the school day.
- ▶ Please return all outstanding forms for the vaccinations this week.



No Football with Josh

- ▶ There will be no community football with Josh during the period of lockdown. Josh will be in contact with footballers directly.



School Fund

- ▶ Every year we ask for a donation per pupil for School Fund.
- ▶ This year, many of our fundraising opportunities have been limited and we will find it very difficult to raise funds for our pupils
- ▶ This funding will go directly to the children through books, resources, equipment and funding opportunities for visitors to connect digitally with our classes
- ▶ **Cost: £10 per pupil.**

Payable by School Money App only



Our New Head Boy & Head Girl!



On Friday we had the pleasure of announcing our new Head Boy, Head Girl and deputies. Each of our pupils will serve in the role for one term before cycling to a new set of pupils.

Head Boy – Alex Ali (P7M)

Head Girl – Ruvimbo Mangwandi (P7H)

Deputy Head Boy – Boris Piotrowski (P7H)

Deputy Head Girl – Monica Lewis (P7M)



Homework / Seesaw

- ▶ Please continue to stay active on Seesaw **FAMILY** for whole school and direct teacher updates.
- ▶ Parents can also send messages to teachers **during working school hours only**. Please expect a reply when your child is not being taught by their teacher.
- ▶ Remember that Seesaw **CLASS** will be used for Remote Learning and Homework. **It is ESSENTIAL that homework is completed.** If Homework is not being completed please expect a phone call from Mr McLean.
- ▶ If you require help with the app or login details, do not hesitate to contact the school office on 02890 458237 or email us: Help@Nettlefield.co.uk



CLASS



Soap and Tissues Donation

- ▶ As always, we rely on the kindness of families to supply soap for handwashing and a box of tissues for the class to use.
- ▶ As Covid-19 has increased our need for soap and tissues we would be very grateful if children could bring one bottle of liquid soap and one family box of tissues into school



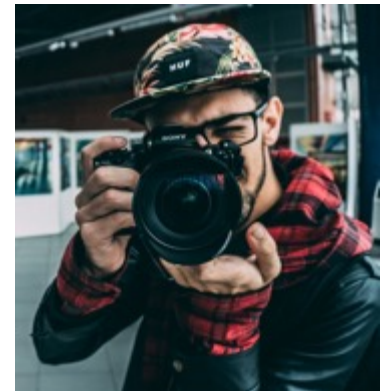
Nursery and P1 Places for 2021!

- ▶ **Please remember that places for Nettlefield Nursery and Primary One are opening soon!**
- ▶ We have limited places and every year we find that many people are looking to join our school.
- ▶ In order to help us begin to cater for invitations or sending information about Nettlefield, we would ask that interested families would contact the school office on 02890 458237 or email help@Nettlefield.co.uk. **This can be for either Nursery or a Primary One place for September 2021.**



School Photos!

- ▶ School Photograph information was sent home before our extended break. Please check your seesaw for further information.
- ▶ Due to Covid-19, Everything will be purchased online, direct from the photographer. Nothing will be purchased through the school office.
- ▶ Please ensure that you have received your child's photograph details via Seesaw or contact the school office.



Keep our Playground Safe!

- ▶ It is ***essential*** to keep our playground safe:
 - ▶ No riding of bicycles / scooters / flickers (**wheel them**)
 - ▶ **No climbing** on our climbing frame (it can be slippery after rain)
 - ▶ **No dogs are to be brought on site**, even in arms, as people can have a deep fear (even with friendly ones)
 - ▶ **No vaping or smoking on our school site**. We are a smoke free zone.



RAISE MONEY FOR SCHOOL FOR FREE!



We really need your help!

Did you know that whenever you buy anything online - from your weekly shop to your Christmas shopping - you could be collecting free donations for Nettlefield Primary School?

There are over 3,000 shops and sites on board ready to make a donation, including Amazon, Boots, Tesco, eBay – This is a really easy way to help us raise vital funds and won't cost you a penny extra!

It's as easy as 1, 2, 3...

Head to <https://www.easyfundraising.org.uk/causes/nettlefieldprimaryschool/> and join for free. You can access it directly by clicking the link on our school website homepage.

Every time you shop online, go to easyfundraising first to find the site you want, or download the app to search and then start shopping.

After you've checked out, that retailer will make a donation to us for no extra cost whatsoever! This will help us raise vital funds for our school and classrooms, benefitting every pupil.

There are no catches or hidden charges and we at Nettlefield Primary School will be really grateful for your donations. Thank you for your support already!