

Nettlefield News

MONDAY 2ND NOVEMBER 2020

Nettlefield



Primary School

School Return

▶ **School returns on Tuesday 3rd November 2020 at all the usual times.**

- | | | |
|------------------|---------------|--------------------------|
| ▶ 8.30am P1 / P2 | 1.30pm | Home Time |
| ▶ 8.45am P3 / P4 | 1.45pm | Home Time |
| ▶ 9.00am P5 – P7 | 1.55pm | Home Time **NEW** |

▶ **REMEMBER:**

- ▶ Parents are to follow the one way system at all times
- ▶ If waiting on pupils between two times – please do not let children play in the playground.
- ▶ **Peter Weir MLA has now asked parents to observe strict social distancing in school grounds and to wear face coverings when dropping children off.**

- ▶ Please find at 0:34 seconds into the this link

-> [Minister Weir's Statement](#) (click this)



School Return- Other Points

▶ REMEMBER:

- ▶ Please obey 2m distancing from school / classroom exit doors and observe the painted markings outside P1 – P3 rooms. **Do not cross the yellow semi circles please.**
- ▶ In the interest of keeping people safe, please do not speak to teachers at pick up and drop off – please use our Seesaw messaging system.
- ▶ Our crossing patrol person at My Lady's Road / Albert's Shop will not be available due to staff illness elsewhere. Please remind children to be careful crossing at this point.
- ▶ There will be no community football with Josh during the period of lockdown. Josh will be in contact with footballers directly.



School Fund

- ▶ Every year we ask for a donation per pupil for School Fund.
- ▶ This year, many of our fundraising opportunities have been limited and we will find it very difficult to raise funds for our pupils
- ▶ This funding will go directly to the children through books, resources, equipment and funding opportunities for visitors to connect digitally with our classes
- ▶ **Cost: £10 per pupil.**

Payable by School Money App only



Free School Meals!

- ▶ Hot meals begin this week for all pupils.
- ▶ To keep pupils within their bubbles, hot meals will be served to classrooms by canteen staff.
- ▶ To purchase or book free meals online for the week please ensure you have done this by Monday evening or you will be unable to book meals for Tuesday.
- ▶ Lunch can be purchased via the School Money app at £2.60 per meal.



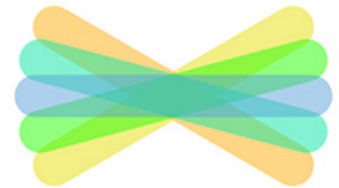
Healthy Break and Lunch

- ▶ Safe eating practices are in place in school in each class. Handwashing occurs a number of timetabled times throughout the school day.
- ▶ We would ask that parents work hard to provide a healthy snack for our pupils that is enough for a break rather than a huge meal that would equal lunch.
- ▶ Please do not be offended when teaching staff discuss this via telephone call as we are simply following Department of Education guidance.



Homework / Seesaw

- ▶ Please continue to stay active on Seesaw **FAMILY** for whole school and direct teacher updates.
- ▶ Parents can also send messages to teachers **during working school hours only**. Please expect a reply when your child is not being taught by their teacher.
- ▶ Remember that Seesaw **CLASS** will be used for Remote Learning and Homework.
- ▶ If you require help with the app or login details, do not hesitate to contact the school office on 02890 458237 or email us: Help@Nettlefield.co.uk



CLASS



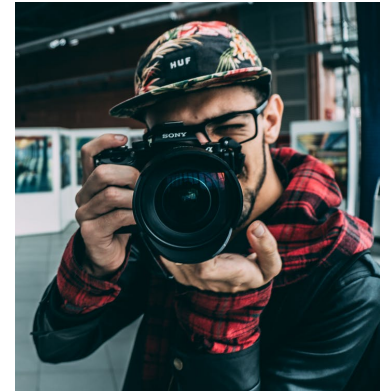
Nursery and P1 Places for 2021!

- ▶ **Please remember that places for Nettlefield Nursery and Primary One are opening soon!**
- ▶ We have limited places and every year we find that many people are looking to join our school.
- ▶ In order to help us begin to cater for invitations or sending information about Nettlefield, we would ask that interested families would contact the school office on 02890 458237 or email help@Nettlefield.co.uk. **This can be for either Nursery or a Primary One place for September 2021.**



School Photos!

- ▶ School Photograph information was sent home before our extended break. Please check your seesaw for further information.
- ▶ Due to Covid-19, Everything will be purchased online, direct from the photographer. Nothing will be purchased through the school office.
- ▶ Please ensure that you have received your child's photograph details via Seesaw or contact the school office.



Congratulations!

- ▶ During our extended break we had the wonderful news that Nettlefield had not one but two weddings!
- ▶ We wish to extend our warmest congratulations to Miss Irwin, our Vice Principal, who now becomes Mrs Fullerton
- ▶ And also to Miss McMaster our Learning Support Assistant in Primary One who now becomes Mrs Clarke.
- ▶ We wish them both and their families many congratulations and can't wait for them to have a happy and bright future.



Keep our Playground Safe!

- ▶ It is ***essential*** to keep our playground safe:
 - ▶ No riding of bicycles / scooters / flickers (**wheel them**)
 - ▶ **No climbing** on our climbing frame (it can be slippery after rain)
 - ▶ **No dogs are to be brought on site**, even in arms, as people can have a deep fear (even with friendly ones)
 - ▶ **No vaping or smoking on our school site**. We are a smoke free zone.



RAISE MONEY FOR SCHOOL FOR FREE!



We really need your help!

Did you know that whenever you buy anything online - from your weekly shop to your Christmas shopping - you could be collecting free donations for Nettlefield Primary School?

There are over 3,000 shops and sites on board ready to make a donation, including Amazon, Boots, Tesco, eBay – This is a really easy way to help us raise vital funds and won't cost you a penny extra!

It's as easy as 1, 2, 3...

Head to <https://www.easyfundraising.org.uk/causes/nettlefieldprimaryschool/> and join for free. You can access it directly by clicking the link on our school website homepage.

Every time you shop online, go to easyfundraising first to find the site you want, or download the app to search and then start shopping.

After you've checked out, that retailer will make a donation to us for no extra cost whatsoever! This will help us raise vital funds for our school and classrooms, benefitting every pupil.

There are no catches or hidden charges and we at Nettlefield Primary School will be really grateful for your donations. Thank you for your support already!

Competition Time CLOSING TUESDAY

Prizes

P1 - P3 £10 VOUCHER

P4 - P7 £10 VOUCHER





Can you make a picture from 2D shapes?

Cut out or draw some 2d shapes and see what exciting pictures you can make!

Send your entries to your teacher via seesaw or put in the post box at the office!

**P1 - P3 Closing date Tuesday
3rd Novemeber 2020.**



Design a Maths Trail around Nettlefield Primary!

Send your entries to your teacher via seesaw or put in the post box at the office!

P4 – P7 Closing date Tuesday 3rd November 2020.

12345
67890

Your Maths Trail should include at least 6 questions (with answers) from various locations around school and the nearby streets. (Use paper and pen, Word or PowerPoint to complete.)



Example:

You go shopping to Russells. How much does a 2L milk and a 454g tin of Heinz Baked Beans cost?

How many triangles appear in the sign for Willowfield Church Halls?

How many odd numbers are in the phone number of Smyths Chippy?

