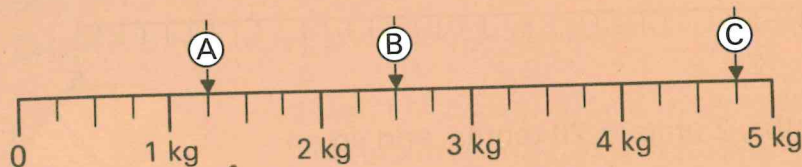
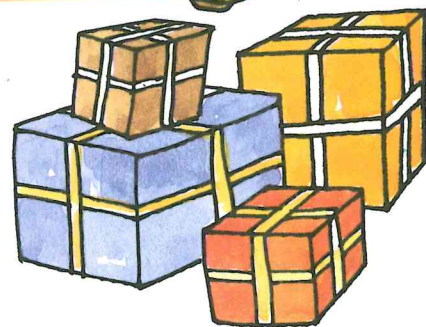
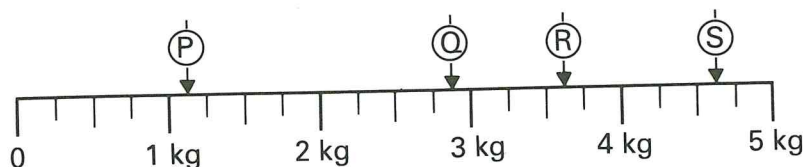


# Parcels



- 1 The pointers show the weights of three parcels.
  - (a) How many small intervals are there between 0 and 1 kg?
  - (b) What weight does each small interval represent?
  - (c) Write the weights of the three parcels A, B, and C.
  - (d) How much heavier is parcel B than parcel A?
  - (e) How much lighter is parcel B than parcel C?

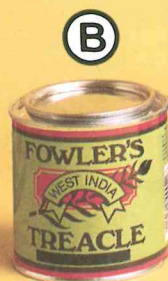
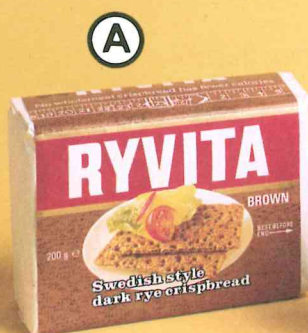
- 2 Four parcels P, Q, R, and S are weighed on this scale.



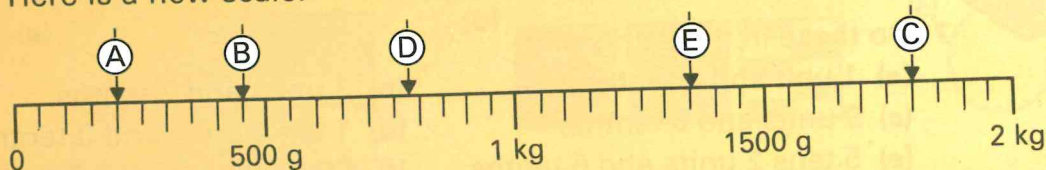
Parcel S weighs less than  $4\frac{3}{4}$  kg and more than  $4\frac{1}{2}$  kg.

Write statements like this about the weights of the other parcels.

3



Here is a new scale.



- (a) How many small intervals are there between 0 and 500 g?
- (b) What weight does each small interval represent?
- (c) Write the weight of each of the groceries.