

May and June 2026 NEWS



Please read about:

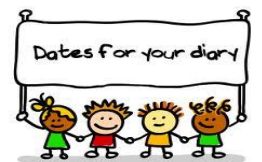
- Our learning
- Reminders
- Dates for your diary

May school closures

The school will be closed on Monday 4th May and the last week in May - Monday 25th May to Friday 29th May inclusive

Important dates for your diary –Friday 15th May- School Photographs, 3rd June Parent and child farm trip (funded by snack fund). Sports Day 5th June 10am

Last Day of Term – Tuesday 30th June at 11am



Our Learning

ECO ACTIVITIES - MAY & JUNE

Mini-beasts in the environment i.e. in the garden, town and seaside.

We will investigate colour, pattern and markings on butterfly wings, ladybird spots and snail shells.

How it moves – will it crawl, slide or hop.

Physical attributes – legs, wings, shell, and antennae.

Where it lives – on a flower, in a bush or under the stones.

What it eats. Follow up science – we will observe the life cycle of the butterfly - from caterpillar to butterfly.



OBSERVING

By watching carefully, we can see what our insects do. We will use our permanent magnifying post in the garden. We can look at reference books to find out where they live.

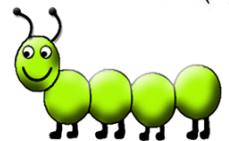
Look out for a snail's trail, a spider's web and check for ladybirds in our bug hotel. We will: -

Watch our caterpillars grow

Look at our seeds and plants growing

Continue to plant flowers / seeds in our outdoor garden.

We have ordered live caterpillars - we will watch them 'grow' into butterflies in our butterfly tent and we will release them on a warm day when they have emerged from their chrysalis. Encourage positive attitudes towards mini-beasts in order to help your child to appreciate the wonders of the insect world. We have a 'bug hotel' in our Eco garden to encourage insects to visit and stay!



TOPIC: GROWTH

We will plant seeds and observe them to see how they change – from shoots to leaves and stems to flowers. Encourage your child to plant seeds at home – nasturtiums are colourful and simple to grow. Observe growth by comparing height. Small/tall. How tall? Taller than, shorter than, the same height. Children will take home the bean plants that they planted.



COLOUR THEMES

We will focus on various colours in our art and craft work and mix colours to make a new colour.

PETS

We will learn that some animals live at home with us e.g. cats, dogs, goldfish, and rabbits.

We will invite the children to talk about pets at home, how they care for them, what kind of food do they eat? And where do they live?



BIG BEASTS – DINOSAURS

Through our small world play and use of model dinosaurs we will be learning about pre-historic life and 'The age of the Dinosaurs'. Characteristics of size, many shapes, tails, wings, teeth and skin and food preferences: Carnivores – meat eaters, Herbivores – vegetation, plants and leaves and Omnivores – meat / plant eaters. We will share ideas on how they became EXTINCT.

MATHEMATICAL EXPERIENCES

We will be consolidating counting and sorting for shape, colour and type e.g. those insects which can fly and those insects which cannot fly. We will also be making comparisons.

We will be naming morning, afternoon, evening and days of the week.

We have identified circle, square, triangle and rectangle, so please continue to look out for these shapes at home and also in our environment.

- E.g. a clock face is a circle
some traffic signs are triangular
our door is a rectangle
some windows may be square



It's fun to look around and discuss these shapes.

We will practice the following skills:

- Counting and sorting skills.
- Counting and matching and using one – to – one correspondence when laying the table.
- Looking at shape, size, texture and colour.
- Making repeating patterns, continuing patterns and devising our own patterns.



PRE-WRITING SKILLS

We will continue to take part in activities to support pre-writing skills. These will help strengthen your child's hand muscles and support them in how to hold and use a pencil properly. If writing out your child's name at home only use upper case for the 1st letter – lower case for all other letters. We will also be learning how to recognise the shape of our names.

REMEMBER: KEEP SAFE IN THE SUN

Drink lots of water. Use a high factor sun block – APPLIED BEFORE SCHOOL DAILY
Wear a sunhat & cover up with a T-Shirt



DEVELOPMENT OF PLAY

We are encouraging concentration in play, persistence and perseverance at activities and determination to finish a task. Interaction and willingness to share equipment and resources will continue to be encouraged.

REMINDERS

SNACK MONEY - Thank you for paying snack/ school fund money each week. This is used to purchase daily fruit and snack food, new resources for learning for indoor and outdoor play, to subsidise trips, gifts for children and for events. This term our purchases include art materials, plants, outdoor activities and the farm visit.



May school closures - The school will be closed on Monday 4th May and Monday 25th May to Friday 29th May inclusive

COACH LED SPORTS SESSION AT THE RECY

This term we will walk to North Queen Street Community Centre, the Recy to take part in coach led sports sessions. This will take place on the 6th, 13th, 20th May and 10th, 17th, 24th June. The children will leave school at 9.30am to walk to the session and return by 10.15am.

School Photographs -15th May -Children's individual and class photographs will be taken on the morning of Friday 15th May 2026. Family photographs can be arranged in the morning from 8.30am – please book a slot with Mrs McAllister.



Parent and Child trip to the Farm – Date: Wednesday 3rd June - This is a parent and child trip – **all children MUST BE accompanied by 1 family member.** The cost of the trip is approx £23 per child and parent - **the school will cover the cost of the trip through the snack fund.** Parents and children should arrive at the school by 9.50am. The bus will leave at 10am and arrive at Streamvale Farm at

10.30am. Parents will accompany their child around the farm. A packed lunch will be provided for your child. You may want to bring a snack for your child and a lunch for yourself. The bus will take us back at 12.45pm and you will be dropped back at the school by 1.30pm.

ASPIRE SHARED EDUCATION TRIP – Tuesday 12th May and Friday 19th June (plus a further date TBC) Our school is involved in Shared education with Shaftsbury NS and we visit the school each month to play with new friends. Children will leave school at 9.15am to go on a bus to Shaftsbury NS and return at 11.45am.

SPORTS DAY

This will take place on Friday 5th June at St Patricks PS outdoor pitch from 10am - 11am. More details to follow.

ILLNESS -Thank you for keeping your child at home when they are unwell. We wish to remind parents that children should not return to school before they have fully recovered.

REMINDERS

- Please pay dinner / snack money on Monday (Wednesday morning at the latest), try to have the **correct** money placed in your named envelope.
- Please ensure your child has a change of clothes in their bag in the children's bathroom.
- Inform staff immediately of changes to address / telephone numbers (this is vital in order to update records and to ensure you receive text messages from nursery).
- As the days become warmer children will be removing their jumpers. Please ensure all jumpers are identified with your child's name.
- Please ensure that sun cream is applied on sunny days before attending school.

PREPARATION FOR PRIMARY ONE

Starting primary school is a very exciting step in a child's life. Please see below some simple and fun everyday activities to support your child so that they can start school healthy, happy, active, curious and sociable.



- *Encourage your child to become independent* with everyday tasks such as dressing, handwashing, blowing their nose, using a knife and fork and toileting.
- *Practice social skills with your child* e.g. sharing through simple games such as snakes and ladders, taking turns in conversations.
- *Help your child get ready for reading and writing.* Help them recognise their name. Read to your child to improve their vocabulary, listening skills and their understanding. Develop their motor skills - as this will help develop their hand strength and hand-eye co-ordination which are key to helping your children learn to write and draw. Also encourage the recognition of numbers at home and in the environment.

Our home learning section on our website contains various information to help prepare your child for P1 including support with fine motor skills, pencil grip and songs

<https://www.victorianursery.org.uk/home-learning/?class=9>

Transition Reports

End of term reports will be given in June to parents whose children are transferring to primary school. A copy will also be forwarded to your child's school. If you would like to talk to me regarding your child's progress please contact me to arrange a telephone appointment.



Thank you for your continued help and support.