

TEMPLEPATRICK PS NEWSLETTER



29TH AUGUST 2025

success for all
#kindness and respect



Dates for your diary

8
SEPT

**TEACHER LED AFTER SCHOOL
CLUBS RECOMMENCE**

8
SEPT **12**
SEPT

P7 MR SHAW SWIMMING

P7 MR CROZIER SWIMMING

10
SEPT

JUJITSU RECOMMENCES 2- 4PM

8
SEPT

**SAM MCILVEEN FOOTBALL
RECOMMENCES 2- 4PM**

6
OCT

BOOK FAIR WEEK

20
OCT **23**

**PARENT INTERVIEWS
12 NOON CLOSURE - MON - THURS**

23
OCT

PTA DISCO - HOLD THE DATE

Notices



DINNERS

PLEASE BOOK AND PAY USING SCHOOL MONEY.

PLEASE MAKE SURE SCHOOL CANTEN ARE AWARE OF ANY ALLERGIES IN ADVANCE.

SPECIAL DIET FORMS CAN BE COLLECTED FROM THE OFFICE OR DOWNLOADED FROM OUR WEBSITE.

CHECK THE SCHOOL WEBSITE FOR LATEST MENUS.

EAT SMART WITH THE LUNCH BUNCH

WEEK BEGINNING: 24TH FEBRUARY,
24TH MARCH, 27TH APRIL, 07TH MAY,
10TH JUNE, 07TH SEPTEMBER



MONDAY	TUESDAY	WEDNESDAY	THURSDAY	FRIDAY
Main Golden Crumbed Fish Fingers & Mayo Dip - Or - Roasted Garlic & Potato Chicken Pasta Side Dish Garden Peas & Baked Beans Mashed Potato & Potato Salad Dessert Homemade Chocolate & Raspberry Brownie	Main Homemade Beef Lasagne with Garlic Bread Slice - Or - Homemade Margherita Pizza with Salad in Season Side Dish Baton Carrots & Broccoli Chopped Potato & Baby Potato Salad Dessert Assorted Yogurt Pots & Fresh Fruit Salad	Main Lunch Bunch Chicken Curry with Freshly Baked Mini Naan Bread - Or - Oven Baked Pork Sausages with Gravy or Ketchup Side Dish Sweetcorn & Spaghetti Hoop Steamed Fluffy Rice or Mashed Potato Dessert Caramel Apple Crumble & Custard	Main Cook's Roast Turkey with Stuffing & Gravy - Or - Salmon Fillet with Mayo Side Dish Fresh Selection of Vegetables in Season Oven Baked Roast Potatoes & Mashed Potatoes Dessert Ice Cream with Two Fruits	Main Cheeseburger with Burger Sauce in Bag - Or - Tex Mex Chicken Fajita Side Dish Mini Corn on the Cob & Coleslaw Chopped Potatoes or Baked Jacket Potatoes Dessert Homemade Oaty Biscuit with Fresh Fruit

MILK, WATER, BREAD & FRESH FRUIT
AVAILABLE DAILY

IF YOU NEED ANY INFORMATION ON ALLERGENS, OR HAVE SPECIAL DIETARY REQUIREMENTS,
PLEASE NOTIFY YOUR SCHOOL, ACCORDINGLY

MENU SUBJECT TO PRODUCT
AVAILABILITY

**PLEASE REMEMBER WE ARE AN 'ALLERGY
AWARE' SCHOOL.
WE HAVE A CHILD WITH A SPECIFIC FOOD
ALLERGY WHICH INVOLVES FOODS
CONTAINING NUTS, CHICK PEAS AND / OR
LENTILS.**

**PLEASE NOTE HUMUS SHOULD NOT BE
SENT AS A BREAK / LUNCH TIME SNACK.**



SCHOOL DROP OFF / COLLECTION

THANK YOU TO EVERYONE FOR YOUR CONTINUED
COOPERATION WITH SCHOOL DROP OFF /
COLLECTION.

WE HAVE LISTENED TO YOUR CONCERNS AND
APPRECIATE YOUR FEEDBACK.

PARENTS WHO HAVE ENGAGED WITH SCHOOL
AND DISCUSSED ALL THE ISSUES, HAVE ALL
AGREED THAT THE CURRENT ARRANGEMENTS ARE
BOTH NECESSARY AND MEASURED.

AFTER SCHOOL CLUBS AND WRAPAROUND
SERVICES WILL REDUCE TRAFFIC FLOW AT PEAK
TIMES AND WE HAVE A NUMBER OF PLANS WHICH
WILL CONTINUE TO HELP IN SMALL WAYS.

OUR CHILDREN'S SAFETY REMAINS
OUR NUMBER ONE PRIORITY.

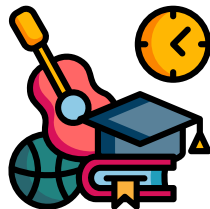


TEACHER LED CLUBS

WE ARE PLEASED TO
ANNOUNCE TEACHER LED
CLUBS WILL RECOMMENCE
FROM MONDAY 8TH
SEPTEMBER.

MONDAY -BOARD GAMES P4
NETBALL P6 / 7
ART CLUB P6 / 7
FOOTBALL
COMPUTER P6

TUESDAY
PINS AND NEEDLES P4
CHOIR - TERM 1 P6 / 7
THURSDAY
HOCKEY P6/7
RUGBY P6/7



Notices



STAY AND PLAY UPDATE

WE HAVE HAD A BRILLIANT FIRST WEEK.

WE HAVE LOTS OF INTEREST FROM PARENTS REGARDING HOW IT ALL WORKS AND HOW CHILDCARE VOUCHERS WORK.

FEEL FREE TO CALL IN AND CHAT WITH CONNIE / HER TEAM. WE ALSO HAVE LOADS OF DETAIL ON OUR WEBSITE



JUJITSU AFTER - SCHOOL CLASSES STARTING IN SEPTEMBER EVERY WEDNESDAY AFTERNOON

P2 -P3 2-3PM

P4-P7 3-4PM

BEGINNERS WELCOME CONTACT LORRAINE 07812029477 OR EMAIL LORRAINE.GAULT@BTINTERNET.COM



OUR PTA IS GETTING READY FOR THE YEAR AHEAD. WE HAVE SAID GOODBYE TO A NUMBER OF VERY DEDICATED MEMBERS AND WE REALLY NEED NEW FACES TO HELP SUPPORT THE SCHOOL .

ALL HELP GRATEFULLY RECEIVED.



THE EC SCHOOL MILK SUBSIDY SCHEME MEANS THAT SCHOOLS ARE ABLE TO OFFER 1/3 PINT CARTONS OF MILK TO PUPILS AT A COST OF 21P PER DAY.

THE CHARGE FOR THIS MILK WILL BE ON A TERMLY BASIS WITH MONEY PAYABLE IN ADVANCE. REFUNDS WILL NOT BE PAYABLE EXCEPT IN THE CASE OF LONG-TERM ABSENCE WHEN THE MILK ORDER CAN BE CANCELLED IN ADVANCE.

IF YOU WOULD LIKE YOUR P1-P7 CHILD TO RECEIVE MILK AT BREAK TIME, PLEASE PURCHASE VIA THE SHOP TAB ON SCHOOLMONEY BY 8AM MONDAY 8TH SEPTEMBER 2025.

COST £13.65 FOR 15 SEPTEMBER – 19 DECEMBER 2025.

ATTENDANCE RECORDING

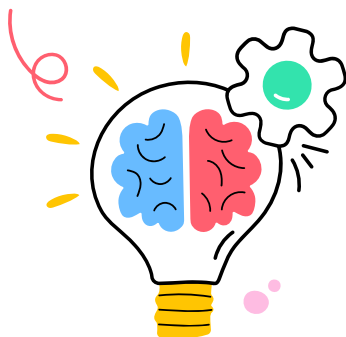
IF YOUR CHILD MISSES A DAY OR MORE OF SCHOOL, PLEASE EMAIL THE STAFF SO THAT WE CAN RECORD THE NATURE OF YOUR CHILDS ABSENCE.

IF WE DONT RECEIVE AN EMAIL, THE ABSENCE IS RECORDED AS UNAUTHORISED.

School- Updates



OVER THE SUMMER, WE INSTALLED A SPECIAL SEN SENSORY AREA IN THE SCHOOL, FUNDED BY PTA FUNDS. WE LOOK FORWARD TO OUR OPENING CEREMONY LATER IN THE MONTH.



STAFF HAVE IDENTIFIED THREE PRIORITY AREAS FOR THE YEAR AHEAD

- **THE USE OF AI TO PROVIDE HIGH QUALITY TEACHING AND LEARNING.**
- **CURRICULUM - FOCUS ON HOW WE DELIVER WORLD AROUND US AND OUTDOOR LEARNING.**
- **SEN - TO ENSURE ALL OF OUR CHILDREN HAVE THE SUPPORT THEY REQUIRE TO REACH THEIR POTENTIAL. (DYSLEXIA FOCUS)**

WE LOOK FORWARD TO SHARING THE PROGRESS IN THESE KEY AREAS IN THE YEAR AHEAD.



DEAR PARENT/CARER,

THE DEPARTMENT OF EDUCATION, EMPLOYING AUTHORITIES, SECTORAL SUPPORT BODIES, AND TEACHER UNIONS HAVE JOINTLY ACKNOWLEDGED THE INCREASING DEMANDS PLACED ON SCHOOL BASED STAFF. IN SUPPORT OF STAFF WELLBEING AND TO HELP MANAGE WORKLOAD EFFECTIVELY, SCHOOLS HAVE BEEN ASKED TO CLEARLY COMMUNICATE THEIR NORMAL OPERATING HOURS AND THE APPROPRIATE WAYS FOR PARENTS AND CARERS TO GET IN TOUCH.

PLEASE NOTE THE FOLLOWING:

NORMAL OPERATING HOURS -

MONDAY - THURSDAY : 8.45 AM - 3.30PM

FRIDAY: 8.45AM - 3PM

CONTACTING THE SCHOOL IF YOU NEED TO GET IN TOUCH WITH US,

PLEASE USE ONE OF THE FOLLOWING METHODS: -

EMAIL: INFO@TEMPLEPATRICKPS.BALLYCLARE.NI.SCH.UK

PHONE: 028 9443 2486

TO SPEAK WITH YOUR CHILD'S TEACHER, PLEASE CONTACT THE SCHOOL OFFICE TO ARRANGE A MEETING.

SCHOOL STAFF ARE NOT EXPECTED OR REQUIRED TO RESPOND TO COMMUNICATION FROM PARENTS OR OTHERS OUTSIDE OF THE SCHOOL'S NORMAL OPERATING HOURS, EXCEPT IN THE CASE OF A CRITICAL INCIDENT.

PLEASE USE THE 'SCHEDULE SEND' FUNCTION FOR EMAILS SENT AFTER SCHOOL HOURS.

YOURS FAITHFULLY,

MR DUNLOP

Mini Rugby

- Boys and Girls P1-7
- All schools welcome

🕒 9.15am

📍 **Castle Grounds
Ben Madigan
Antrim Road**

**Starts
6th
September**



Join via
<https://group.spond.com/IFSDB>



MORE INFO academyrfc@yahoo.co.uk
www.academyrfc.co.uk



TAKA

NA Network Auto

**RICHTER
SPORTS**

cd-group.com



**IT'S THE START OF
A NEW TERM.
LOOKING FOR
FLEXIBLE CHILDCARE?!**
SAVE UP TO 35%

Get in touch to arrange a trial day for your child, we'd love to welcome you!

We offer afterschool care where children are genuinely supported to thrive in a nurturing, engaging environment. Our program extends to full-day care during school holidays, providing consistency and peace of mind for families year-round.

CHILDREN ENJOY OUR INDOOR AND OUTDOOR SPACES, ENGAGING DAILY ACTIVITIES, AND THE WARM, SUPPORTIVE FAMILY ATMOSPHERE WE CREATE.

PARENTS LOVE OUR FLEXIBILITY, PRICE & PEACE OF MIND THAT THEIR KIDS ARE BEING CARED FOR LIKE FAMILY.

our
**Wee
FAMILY**
AFTER SCHOOLS
FOR CHILDREN FROM P1 - P7

**TERM TIME
AFTERSCHOOL
£34 PER DAY**

LYLEHILL PRESBYTERIAN
CHURCH
TEMPLEPATRICK
FRIDAY EVENINGS 6:30 PM

GIRLS BRIGADE

COME JOIN US

EXPLORERS-
AGE 3-7

JUNIORS-
AGE 8-10

SENIORS-
AGE 11-13

BRIGADERS-
AGE 14-18



REGISTRATION
EVENING
FRIDAY 5TH
SEPT
6:30PM

CONTACT
HEATHER FOR
FURTHER INFO
07711 763690



LINK TO OUR
CONSENT FORM

**SANCTUARY
YOGA**

**6 WEEK BLOCK PROGRAMME
BEGINS TUESDAY 9TH SEPTEMBER
TEMPLEPATRICK PS 6PM
ALL LEVELS WELCOME**

CONTACT ANITA
07751201469

SANCTUARY
YOGA NI

breathe.