

How to Update SynGuider's Firmware

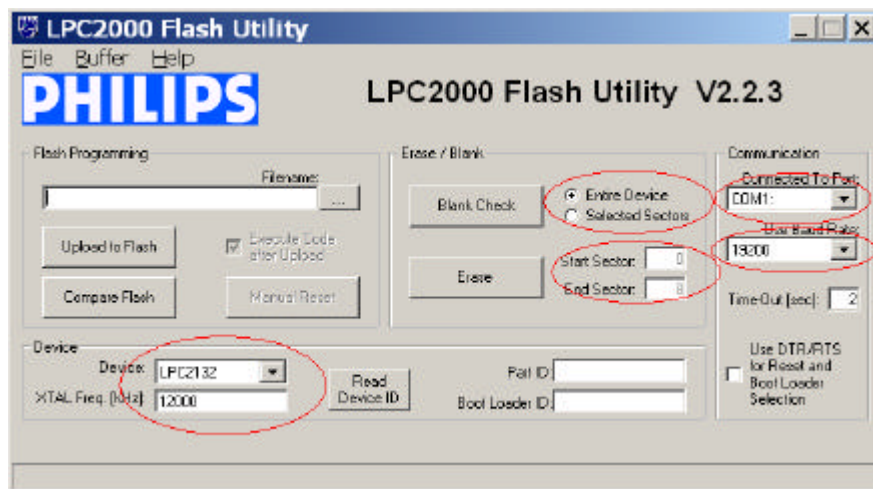
1. Hardware Requirements

- A PC running Windows, with a serial port.
- SynGuider, serial cable and RJ-45 plug from SynGuider's package
- A DC power supply with 6V-12V output voltage, 250mA output current.

Warning: Do not use a transformer style AC-to-DC adapter whose output voltage is higher than 12V DC and output current higher than 250mA. The true output voltage of such kind of AC adapter might be much higher than 14V DC and damaged the SynGuider.

2. Install and Configure Philips Flash Utility

- Open file "Philips Flash Utility Installation.zip".
- Double click "Philips Flash Utility Installation.exe" in the opened window.
- Follow the instruction of the application to finished Installation.
- Run "Start\Phillips Semiconductors\Fash Utility\ Launch LPC210x_ISP.exe"
- Configure the utility as shown below. The "Connected to Port" should set to the port that will be used to connect to SynGuider. On some computer, the "Use Baud Rate" can be set to 38400 for faster updating.

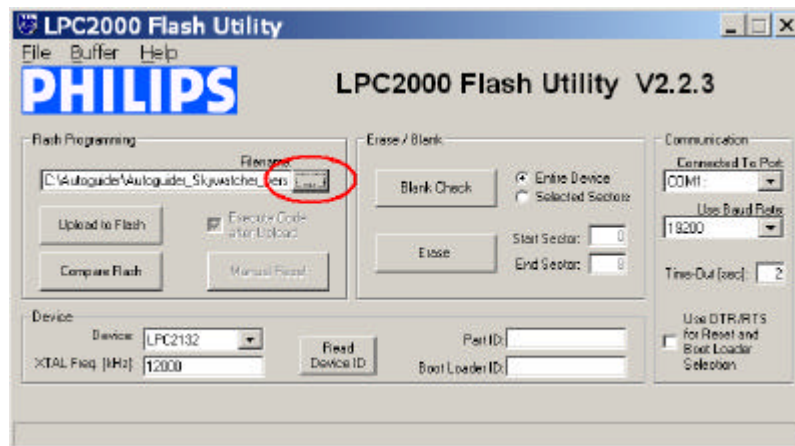


3. Update SynGuider's Firmware

- Setup the SynGuider as shown below. Do not turn power at this moment.



- Copy the firmware file "Autoguider_Skywatcher_VerX.X" to a folder, for example, "C:\Autoguider".
- Run "Start\Phillips Semiconductors\Flash Utility\ Launch LPC210x_ISP.exe" and click the browsing button to load the firmware file saved in C:\Autoguider.



- Click the "Upload to Flash" button, the utility will pop-up a window as shown below. Now turn on the power to the SynGuider and press "OK" button in the upper pop-up window.



- The utility will start to update the firmware. Once it is finished, a message "File Upload Successfully Completed" will show in the status bar at the window bottom.
- Up-plug the power supply to the SynGuider, then unplug serial cable and RJ-45 plug.
- Insert the RJ-45 plug and serial cable into another SynGuider, apply power to it and click "Upload to Flash" button to update the firmware of this SynGuider. The utility will report an error for the first try, ignore it and click "Upload to Flash" button again.

4. Restore Factory Setting

After updating the firmware, use menu RESET to restore all the parameters to factory setting.