



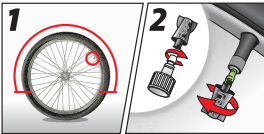


HOW MUCH PER TIRE?

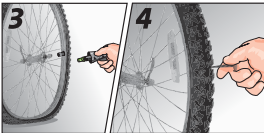
 BICYCLE	4 oz. (118 mL)
 WHEELBARROW	8 oz. (237 mL)
 DIRT BIKE	8 oz. (237 mL)
 SCOOTER	8 oz. (237 mL)

HOW DO I INSTALL SLIME?



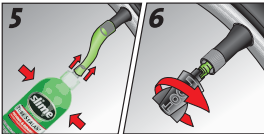
1. Position valve core in upper half of tire.

2. Slowly remove valve core with tool in cap.



3. Allow tire to fully deflate.

4. Remove object (if possible).



5. Attach hose and squeeze in Slime.

6. Replace valve core.



7. Inflate tire.

8. Spin tire to distribute sealant.

FIBRO-SEAL® TECHNOLOGY

Microfibers in our patented formula are carried by the escaping air to the puncture where they build up to form a plug that stops air loss.

- Instantly Seals **Tread Area** Punctures up to 1/8" (3mm) in Size
- Safe for Finished Metal Wheels
- Works Repeatedly for 2 Years
- Non-Flammable and Non-Toxic
- Cleans up with Water

WARNING: Slime is a temporary repair when used in passenger vehicles. Seek a permanent professional repair. Slime will remain liquid, which may result in imbalance or vibration. If vibration occurs, seek an immediate professional repair. Eye protection must be worn during installation. Inspect tires regularly for perforating objects and punctures. **Slime will not seal punctures outside the tread area.**

WARRANTY: Product performance is guaranteed for two years. If you are dissatisfied with one of our products please return the original packaging and any remaining product to the place of purchase. Please retain original proof of purchase. Manufacturer's liability limited to product replacement or cash refund.

Slime and Fibro-Seal are trademarks of Illinois Tools Works, Inc, registered in the U.S. and other countries. Slime's Green Promise is a trademark owned by Illinois Tools Works, Inc.

Accessories Marketing, Inc,
a division of ITW, Inc.
125 Venture Drive, Suite 210
San Luis Obispo, CA 93401 USA
Slime South Pacific Pty Ltd.
100 Hassall Street
Wetherill Park, NSW 2164 AUS
Slime European Warehouse
Mandenmakerstraat 6
2222 AX Katwijk, Netherlands
U.S. Patent # 7,388,041

www.slime.com

910003
PART #10003 04.20.12



7 16281 00064 5