



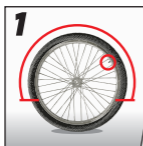


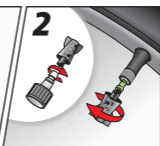
## HOW MUCH PER TIRE?

 BICYCLE	4 oz. (118 mL)
 WHEELBARROW	8 oz. (237 mL)
 DIRT BIKE	8 oz. (237 mL)
 SCOOTER	8 oz. (237 mL)

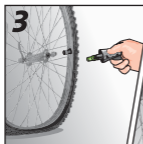
## HOW DO I INSTALL SLIME?



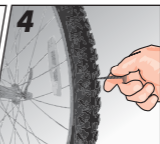
1. Position valve core in upper half of tire.



2. Slowly remove valve core with tool in cap.



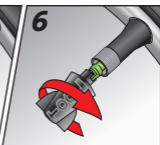
3. Allow tire to fully deflate.



4. Remove object (if possible).



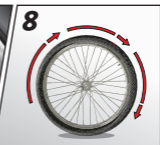
5. Attach hose and squeeze in Slime.



6. Replace valve core.



7. Inflate tire.



8. Spin tire to distribute sealant.