

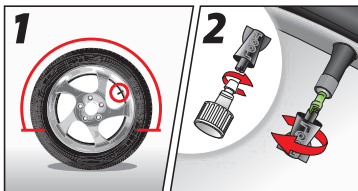


HOW MUCH PER TIRE?

 CAR	16 oz. (473 mL)
 TRAILER	16 oz. (473 mL)

HOW DO I INSTALL SLIME?



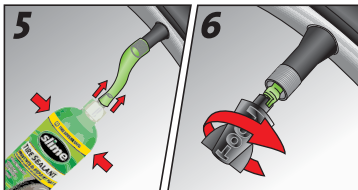
1. Position valve core in upper half of tire.

2. Slowly remove valve core with tool in cap.



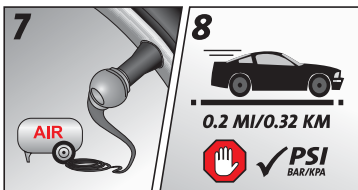
3. Allow tire to fully deflate.

4. Remove object (if possible).



5. Attach hose and squeeze in Slime.

6. Replace valve core.



7. Inflate tire.

8. Drive. Stop. Verify seal and check pressure.



✓ **PSI**
BAR/KPA