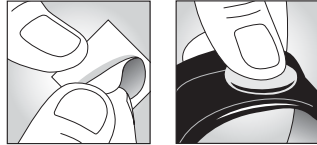




INSTRUCTIONS

To apply pre-glued patches:

- Roughen puncture area with enclosed metal scuffer and wipe clean.
- Peel off the patch backing while not touching or allowing the adhesive to become contaminated.
- Apply patch over the puncture and press firmly.
- Insert inner tube into the tire casing and reinflate.



6 PRE-GLUED PATCHES & SCUFFER

To apply pre-glued patches:

- Roughen puncture area with enclosed metal scuffer and wipe clean.
- Peel off the patch backing while not touching or allowing the adhesive to become contaminated.
- Apply patch over the puncture and press firmly.
- Insert inner tube into tire casing and re-inflate.

Other Uses:

- Tubeless Bike Tires, Tarps, Tents, Miscellaneous Plastic & Vinyl Repairs

6 PARCHES CON PEGAMENTO Y RASPADOR

Para aplicar parches que ya contienen pegamento:

- Raspe el área de la punción con el raspador metálico incluido y límpiela.
- Desprenda el recubrimiento del parche sin tocar ni permitir que el adhesivo se contamine.
- Aplique el parche sobre la punción y presiónelo con firmeza.
- Inserte la cámara en la llanta y vuelva a inflarla.

Otros Usos:

- Llantas de Bicicleta Sin Cámara, Reparaciones de Lonas, Toldos, y Plásticos y Vinílicos Diversos

© **Accessories Marketing, Inc.**

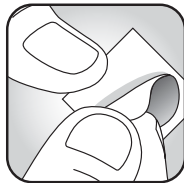
800 Farroll Road, Grover Beach, CA 93433 USA

P.O. Box 197, Oaklands Park, SA 5046 Australia

www.slime.com

PART# 20040

08.09



7



Made in USA/Assembled in China