



ELITE DIGITAL GAUGE

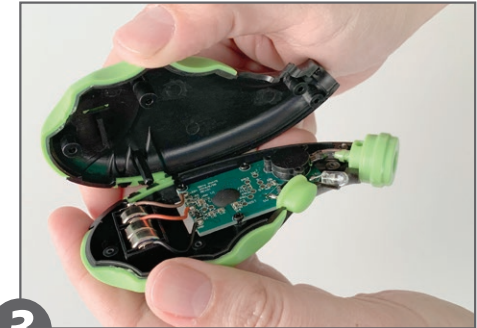
CHANGING THE GAUGE BATTERIES



1 Remove 4 screws from back of gauge body.



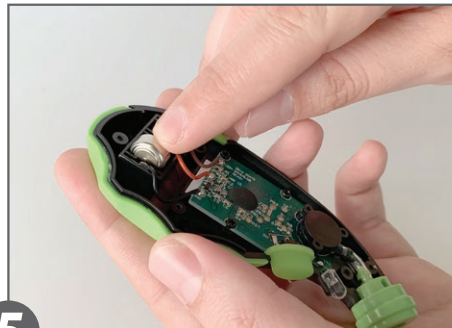
2 Gently separate the 2 halves of the gauge body.



3 Pull both gauge halves apart completely to expose batteries.



4 Remove old batteries from gauge being careful not to break small battery contact wires.



5 Insert 3 new L1154F batteries into gauge with positive side facing the top of the gauge. Gauge will turn on when inserted correctly.



6 Rejoin gauge halves taking care not to pinch any wires. Reinsert and tighten 4 gauge body screws.