



TIRE TOP OFF

TIRE INFLATOR WITH LED LIGHT



ATTENTION! READ ALL INSTRUCTIONS CAREFULLY
FAILURE TO FOLLOW WARNING INSTRUCTIONS CAN RESULT IN FIRE,
PERSONAL INJURY OR PROPERTY DAMAGE.



**ADAPTERS
FOR BALLS &
INFLATABLES**



AIR HOSE

**ON/OFF
SWITCH**

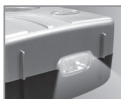


BUILT-IN GAUGE



POWER SOURCE

- Plugs into 12V power outlet



LIGHT

- Bright LED
- For night-time emergencies



CAUTION: HOT • DO NOT HOLD IN HAND WHILE OPERATING • PLACE INFLATOR ON A HARD, CLEAN SURFACE.

1. **DO NOT** run vehicle while inflator is operating. You may need to be in "accessory" or "on" position. Please make sure emergency brake is set and car is in park. Always ensure air hose chuck touches the core of the valve stem for proper inflation.
2. **DO NOT** use inflator continuously for more than 14 minutes. Allow unit to cool approximately 35 minutes between uses. Do not leave inflator unattended.
3. **ALWAYS** use a pressure gauge to check tire pressure. **DO NOT** overinflate.
4. Soft inflatables (i.e. rafts, balls, etc.) may not have recommended pressure markings. Be careful not to inflate items beyond their capacity.
5. While operating, never block the inflator input or output.
6. Keep inflator out of reach of children.
7. For use with 12 volt DC power outlets rated 15 amps or higher. Do not use with older 8 amp cigarette lighter receptacles.

INFLATE TIRES



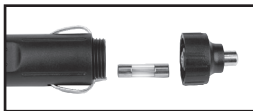
1. Screw air hose connector onto tire's valve stem.
2. Plug power cord into 12 volt accessory power outlet.
3. Press on switch to turn on inflator. Inflate tire to manufacturer's recommended air pressure.* When proper pressure is reached, press off switch to turn off inflator. Unplug power cord and remove air hose connector.

*NOTE: Correct tire pressure can be found in vehicle owner's manual or on driver's side door jamb.

TROUBLESHOOTING

Inflator does not turn on:

1. The fuse, located in the plug adapter, may have blown. Unscrew the tip of the plug adapter, remove fuse and inspect. If necessary, replace fuse with one of the same size and amperage.
2. Check vehicle's power outlet fuse; it should be a minimum of 15 amps.
3. Check receptacle and plug terminals for dirt (particularly tobacco). Use a non-conductive probe (not fingers or metal) to dislodge and remove debris.
4. Push the power plug firmly into the receptacle and twist it back and forth.



Inflator runs but does not inflate:

1. Be sure the air hose connector is tightly screwed onto the valve stem.
2. Check tire for leaks. Check hose for breaks and leaks at fittings.

Inflator runs slowly:

1. The inflator may have overheated from excessive use. Shut it off and allow it to cool for 35 minutes.
2. The voltage may be too low. Check the condition of your vehicle's battery.

NOTE: If tire is totally deflated, it is possible that the tire could separate from the rim allowing air to leak out when trying to inflate. In the event this occurs, it may be necessary to jack up the tire prior to inflation.

Warranty: For the period of one year from date of purchase, manufacturer guarantees that this Product will meet the specifications when used as directed. Manufacturer's sole liability and Customer's sole remedy under any warranty claim is limited to a Manufacturer's coupon for a replacement product upon return of unit and proof of purchase.

QUESTIONS OR COMMENTS: Call +1-805-489-0490 or visit www.slime.com

ITW Global Tire Repair • 125 Venture Drive, Suite 210, San Luis Obispo, CA 93401 USA

Slime® is a trademark of Illinois Tool Works, Inc., registered in the U.S. and other countries.