



# FLAT TYRE REPAIR KIT



\* VALVE DEPRESSOR IS TO BE USED WITH ACCESSORY ADAPTERS (SEE PAGE 2)

## CAUTION: HOT • DO NOT HOLD IN HAND WHILE OPERATING • PLACE INFLATOR ON A HARD, CLEAN SURFACE.

1. DO NOT run vehicle while inflator is operating. You may need to be in “accessory” or “on” position. Please make sure emergency brake is set and car is in park. Always ensure the valve connector is fully seated to depress the core of the valve stem for proper inflation.
2. DO NOT use inflator continuously for more than 10 minutes. Allow unit to cool approximately 25 minutes between uses. Do not leave inflator unattended.
3. ALWAYS use a pressure gauge to check tyre pressure. DO NOT overinflate.
4. Soft inflatables (i.e. rafts, balls, etc.) may not have recommended pressure markings. Be careful not to inflate items beyond their capacity.
5. While operating, never block the inflator input or output.
6. Keep inflator out of reach of children.
7. For use with 12 volt DC power outlets rated 15 amps or higher. Do not use with older 8 amp cigarette lighter receptacles.

**! ATTENTION! READ ALL INSTRUCTIONS CAREFULLY**  
FAILURE TO FOLLOW WARNING INSTRUCTIONS CAN RESULT IN FIRE,  
PERSONAL INJURY OR PROPERTY DAMAGE.

PART#50129 | REV040618ART

# AIR ONLY INSTRUCTIONS:

Check your tyre warranty prior to installation of this product.

The AIR ONLY mode can also be used for bicycles, sports balls, rafts and other inflatables.



- 1 Select AIR ONLY.  
*NOTE: Lay Flat Tyre Repair Kit on the ground facing upward.*



- 2 Screw air/sealant hose onto tyre's valve stem.



- 3 Plug inflator into 12 volt accessory power outlet. Do not run vehicle while inflator is operating. You may need to be in "accessory" or "on" position. Please make sure emergency brake is set and car is in park.



- 4 Push green button to turn system on. Fill to desired pressure. Turn system off and check tyre pressure. Once correct tyre pressure has been achieved, disconnect air hose and power plug.

**IMPORTANT!** When using the supplied inflatable adapters, the valve depressor adapter (fig. X) must be used in conjunction with the inflatable adapters. Failure to use the supplied valve depressor adapter with inflatable adapters will result in over-pressurization and failure of the Flat Tyre Repair Kit. To install, remove the valve depressor adapter assembly from the back of the Flat Tyre Repair Kit. Unscrew the Presta valve adapter and set aside. Thread the valve depressor adapter into the air hose of the Flat Tyre Repair Kit (fig. Y) until fully seated. Thread on the desired inflatable adapter until snug and inflate item.



Fig. X



Fig. Y

# FLAT TYRE REPAIR (AIR + SEALANT) INSTRUCTIONS:

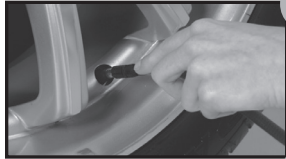
Check your tyre warranty prior to installation of this product.

NOTE: Seals punctures up to 1/4in. (6mm) in tread area for flat tyre repair.

Correct tyre pressure can be found in your vehicle's owner's manual or driver side doorjamb.



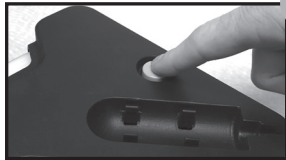
- 1 Select AIR + SEALANT.  
NOTE: Lay Flat Tyre Repair Kit on the ground facing upward.



- 2 Screw air/sealant hose onto tyre's valve stem.



- 3 Plug inflator into 12 volt accessory power outlet. Do not run vehicle while inflator is operating. You may need to be in "accessory" or "on" position. Please make sure emergency brake is set and car is in park.



- 4 Push green button to turn system on. Gauge pressure will initially be high until the sealant bottle is emptied. Once bottle is empty the gauge pressure will drop and tyre inflation begins. Fill to desired pressure. Turn system off and check tyre pressure. Once correct tyre pressure has been achieved, disconnect air hose and power plug.

Drive two miles with speeds less than 25 miles per hour to disperse sealant throughout the tyre, allowing it to seek out and seal the puncture. Recheck tyre pressure to verify that the puncture has been sealed.

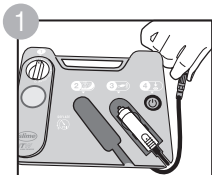
At your earliest opportunity take your vehicle to a tyre repair facility for a permanent professional repair. Inform tyre repair specialist that Slime Sealant is in the tyre.



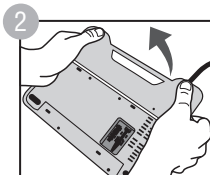
## PRESSURE RELEASE

The PRESSURE RELEASE ensures optimum PSI pressure. Push the area to deflate the tyre if it has been overinflated, or if there is too much air prior to inflation. Check your gauge for the desired PSI level. NOTE: Correct tyre pressure can be found in your vehicle's owner's manual or driver side doorjamb.

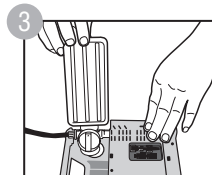
# SEALANT CARTRIDGE REMOVAL INSTRUCTIONS:



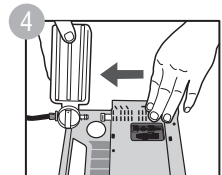
Unwrap  
air/sealant hose.



Lift off cartridge  
cover.



Rotate cartridge  
to upright position.



Pull cartridge out  
horizontally.

# TROUBLESHOOTING:

## **Inflator fails to operate when plugged in:**

1. Check fuse in power cord.
2. Check vehicle fuse.
3. Check vehicle's battery charge.
4. Ensure connection is secure.
5. Check receptacle and plug terminals for dirt (particularly tobacco). Use a non-conductive probe (not fingers or metal) to dislodge and remove debris.

## **Inflator runs but does not inflate:**

1. Be sure the connector is tightly screwed on the valve stem as far as possible.
2. Check tyre for leaks, and check hose for breaks and leaks at fittings.

## **Inflator runs slowly:**

1. If overheated from excessive use, shut it off and allow to cool for 25 minutes.
2. Voltage too low, check condition of vehicle's battery.

*NOTE: If tyre is totally deflated, it is possible that the tyre could separate from the rim allowing air to leak out when trying to inflate. In the event this situation occurs, you will have to jack up the tyre prior to inflation.*

**WARNING:** IRRITANT TO SKIN AND EYES. MAY CAUSE ALLERGIC SKIN REACTION. Avoid ingestion. Avoid eye and skin contact. Wash hands after use. Use only as directed. KEEP OUT OF REACH OF CHILDREN.

**FIRST AID:** In case of eye contact, rinse eyes for 15 minutes with cool water, lifting eyelids occasionally. If on skin, wash with soap and water. If inhaled, seek fresh air. If ingested, DO NOT INDUCE VOMITING; drink plenty of water and contact a physician or hospital. Contains Glycerol, Natural latex rubber, Water, Ethoxylated isotridecanol, Poly (dicyclopentadiene-co-p-cresol).

Call ChemTel: +1-800-255-3924 or 1-813-248-0573  
Reference product name: PART#50129 or #10180 (Refill)

**Sealant cartridge refills available • PART# 10180**

**Warranty:** For the period of one year from date of purchase, manufacturer guarantees that this Product will meet the specifications when used as directed. Manufacturer's sole liability and Customer's sole remedy under any warranty claim is limited to a Manufacturer's coupon for a replacement product upon return of unit and proof of purchase.

**QUESTIONS OR COMMENTS:** Call 1-888-457-5463 or visit [www.slime.com](http://www.slime.com)  
ITW Global Tire Repair • 125 Venture Drive, Suite 210, San Luis Obispo, CA 93401 USA  
Slime® is a trademark of Illinois Tool Works, Inc., registered in the U.S. and other countries.