



ENGLISH

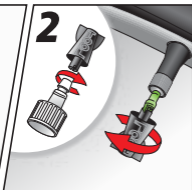
HOW MUCH PER TIRE?

 CAR	16 oz. (473 mL)
 TRAILER	16 oz. (473 mL)

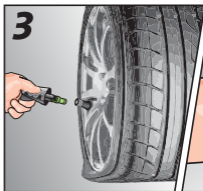
HOW DO I INSTALL SLIME?



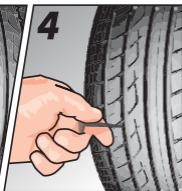
1. Position valve core in upper half of tire.



2. Slowly remove valve core with tool in cap.



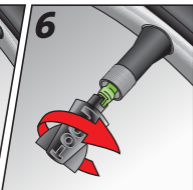
3. Allow tire to fully deflate.



4. Remove object (if possible).



5. Attach hose and squeeze in Slime.



6. Replace valve core.



7. Inflate tire.



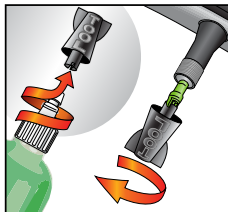
8. Drive. Stop. Verify seal and check pressure.

ESPAÑOL

COMO USO E INSTALO SLIME?



1 Coloque el centro de la válvula en la mitad superior de la llanta.



2 Retire lentamente el centro de la válvula con la herramienta en el tapón.



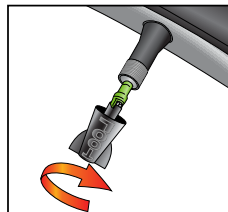
3 Permita que la llanta se desinfla completamente.



4 Retire el objeto (si es posible).



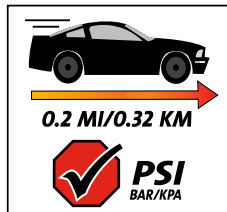
5 Conecte la manguera e inyecte el Slime.*



6 Vuelva a instalar el centro de la válvula.



7 Infla la llanta.



8 Conduzca y pare. Verifique el sello y lea la presión.